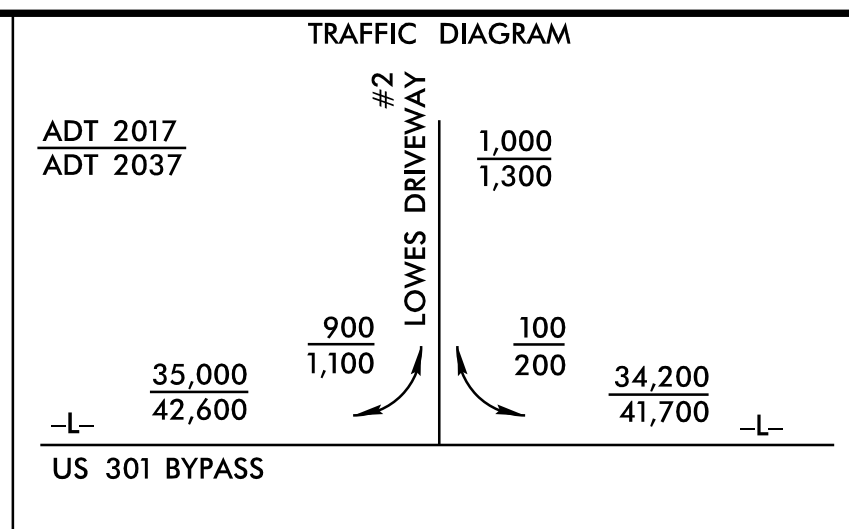
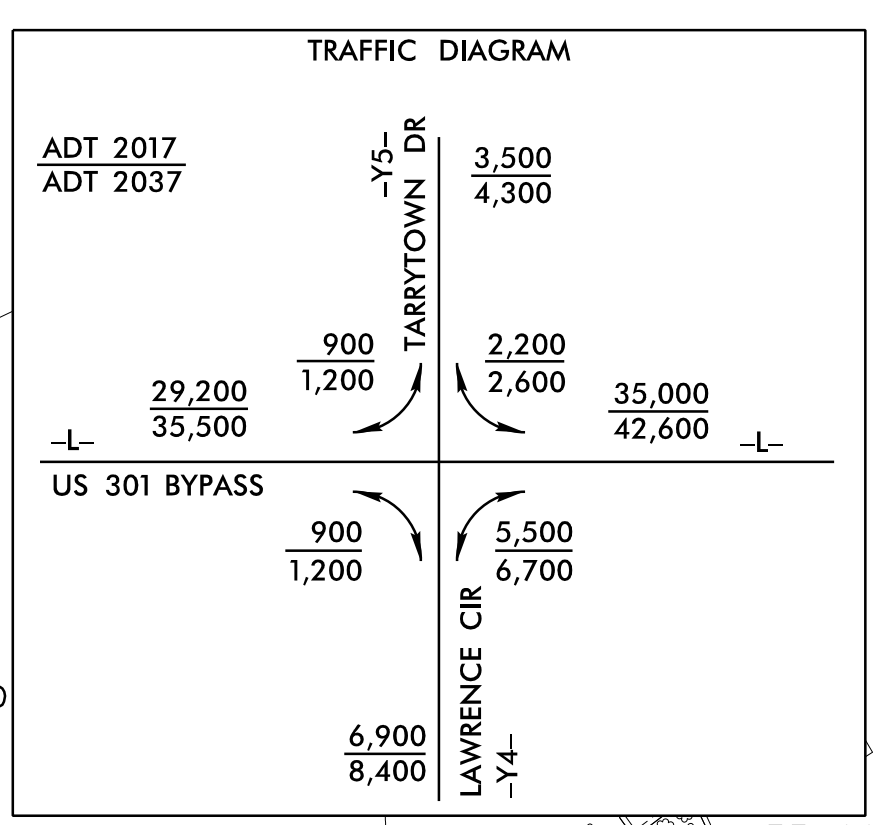


8.17.2017

-Y5-

PI Sta 11+04.34
 $\Delta = 13^\circ 43' 27.8''$ (RT)
 $D = 14^\circ 23' 45.3''$
 $L = 95.34'$
 $T = 47.90'$
 $R = 398.00'$
 SUPER = EXIST.

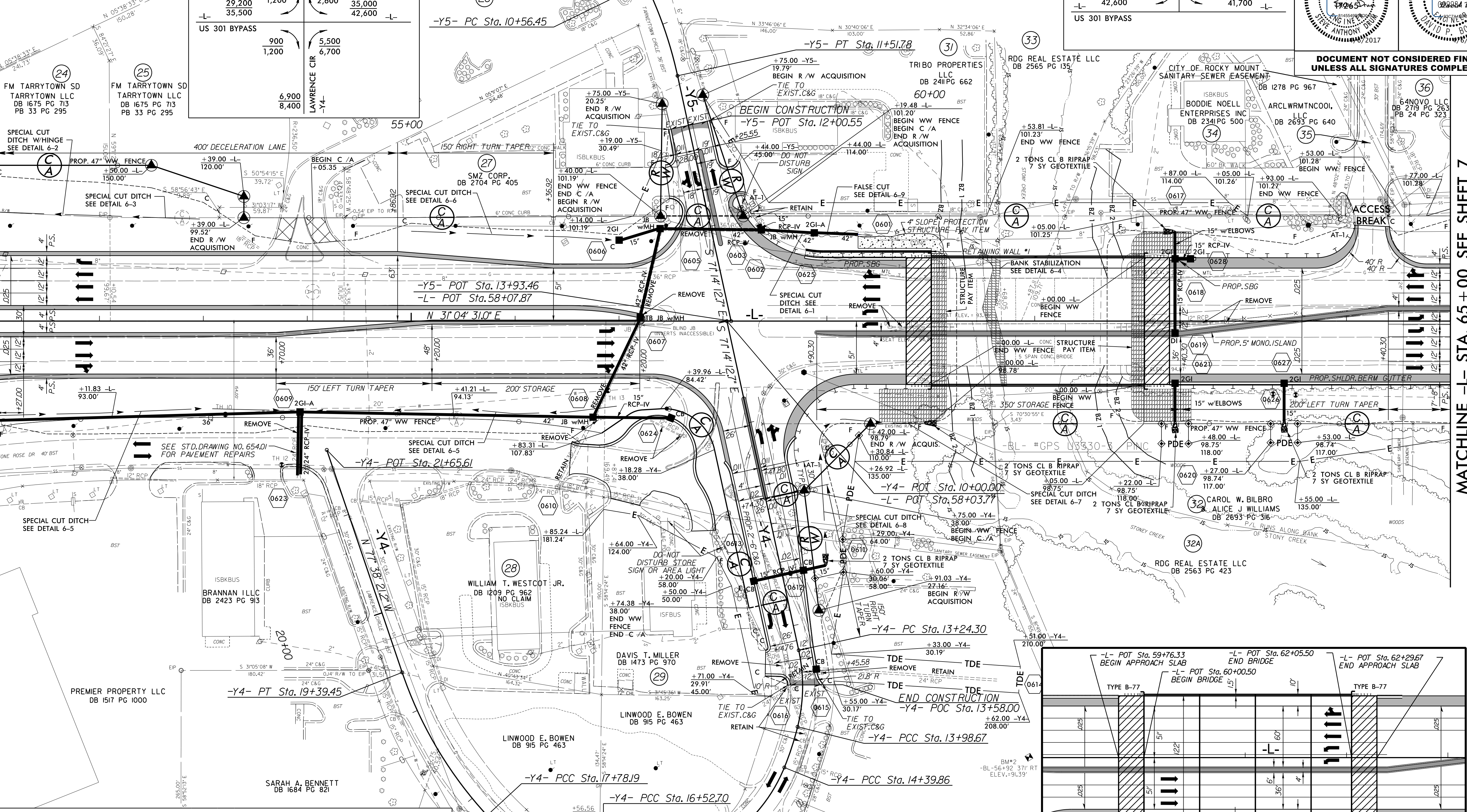


PROJECT REFERENCE NO. U-3330	SHEET NO. 6
RW SHEET NO.	HYDRAULICS ENGINEER
ROADWAY DESIGN ENGINEER	ENGINEER

DOCUMENT NOT CONSIDERED FINAL
UNLESS ALL SIGNATURES COMPLETED

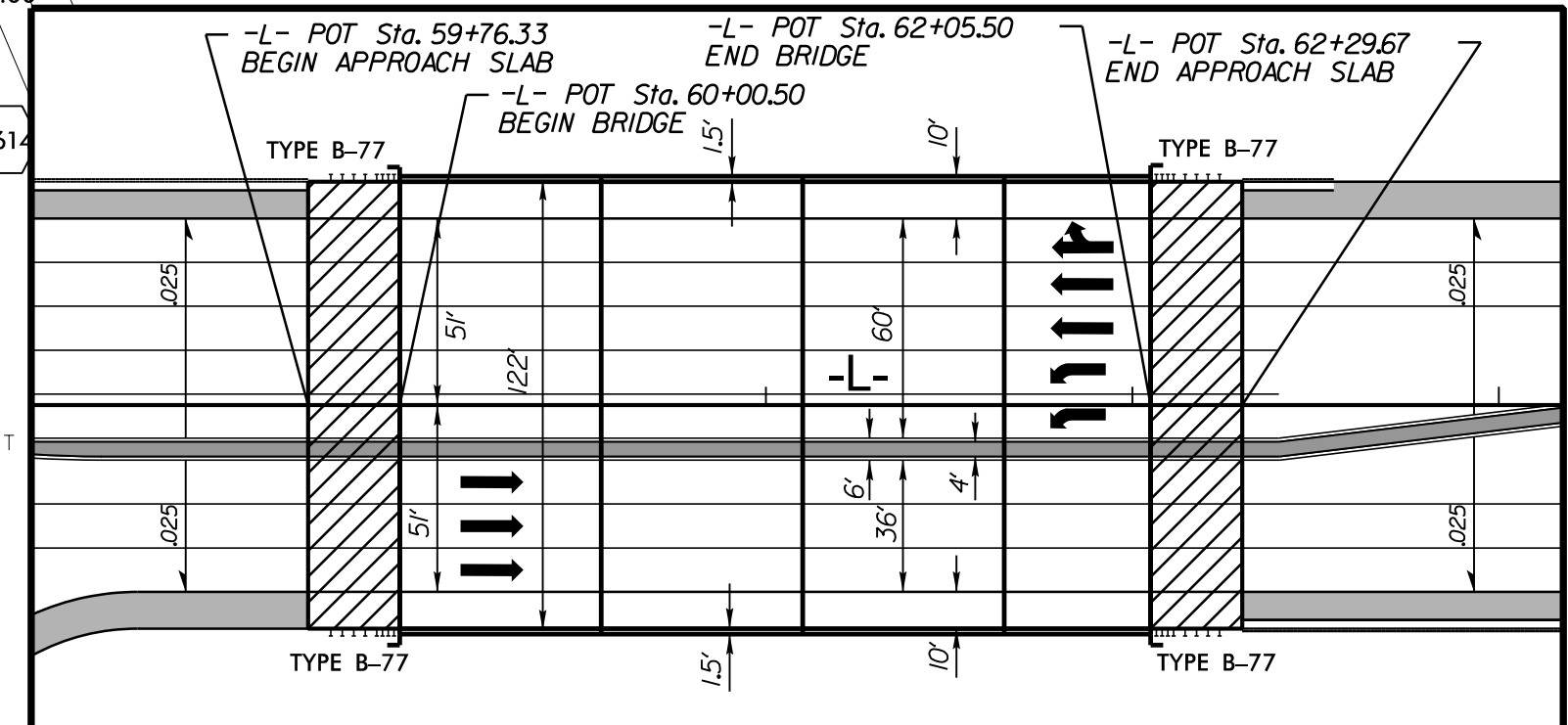
MATCHLINE -L- STA. 51+00 SEE SHEET 5

MATCHLINE -L- STA. 65+00 SEE SHEET 7



-Y4-

PI Sta 13+62.15 $\Delta = 26^\circ 18' 11.2''$ (RT) $D = 35^\circ 22' 04.0''$ $L = 74.37'$ $T = 37.85'$ $R = 162.00'$ SUPER = EXIST.	PI Sta 14+19.30 $\Delta = 8^\circ 01' 41.2''$ (RT) $D = 19^\circ 29' 18.1''$ $L = 41.19'$ $T = 20.63'$ $R = 294.00'$ SUPER = EXIST.	PI Sta 14+90.10 $\Delta = 37^\circ 01' 54.5''$ (RT) $D = 38^\circ 11' 49.9''$ $L = 96.95'$ $T = 50.24'$ $R = 150.00'$ SUPER = EXIST.	PI Sta 15+69.16 $\Delta = 26^\circ 01' 08.6''$ (RT) $D = 40^\circ 55' 32.0''$ $L = 63.58'$ $T = 32.35'$ $R = 140.00'$ SUPER = EXIST.	PI Sta 16+26.55 $\Delta = 4^\circ 16' 53.1''$ (RT) $D = 8^\circ 11' 06.4''$ $L = 52.31'$ $T = 26.17'$ $R = 700.00'$ SUPER = EXIST.	PI Sta 17+19.38 $\Delta = 47^\circ 56' 10.5''$ (RT) $D = 38^\circ 11' 49.9''$ $L = 125.50'$ $T = 66.68'$ $R = 150.00'$ SUPER = EXIST.	PI Sta 18+60.02 $\Delta = 23^\circ 59' 52.5''$ (RT) $D = 14^\circ 52' 55.3''$ $L = 161.25'$ $T = 81.83'$ $R = 385.00'$ SUPER = EXIST.
--	---	--	--	--	---	---



BRIDGE / PAVEMENT RELATIONSHIP SKETCH

FOR RETAINING WALL SEE SHEETS W-1 TO W-3

FOR STRUCTURE SEE SHEETS S3-1 TO S3-42

DRIVEWAY RADII ARE 25' UNLESS OTHERWISE NOTED

FOR -L- PROFILE SEE SHT.15

FOR -Y4- & -Y5- PROFILE SEE SHT.24

SEE SHT.2D-1 FOR DITCH DETAILS

SEE SHT.2B-2 FOR INTERSECTION DETAILS

CALYX
 ENGINEERS + CONSULTANTS
 Formerly Mulkey Engineers & Consultants

7500 EAST INDEPENDENCE
 BOULEVARD, SUITE 100
 CHARLOTTE, NC 28227
 phone: 704.537.7300
 CALYXengineers.com
 NC License # F-1333

4/5/2017
C:\Users\p\OneDrive\Projects\U33330\RDY_PSH_06.dgn