
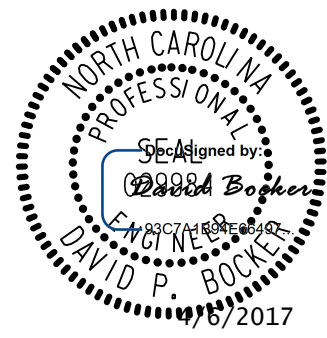
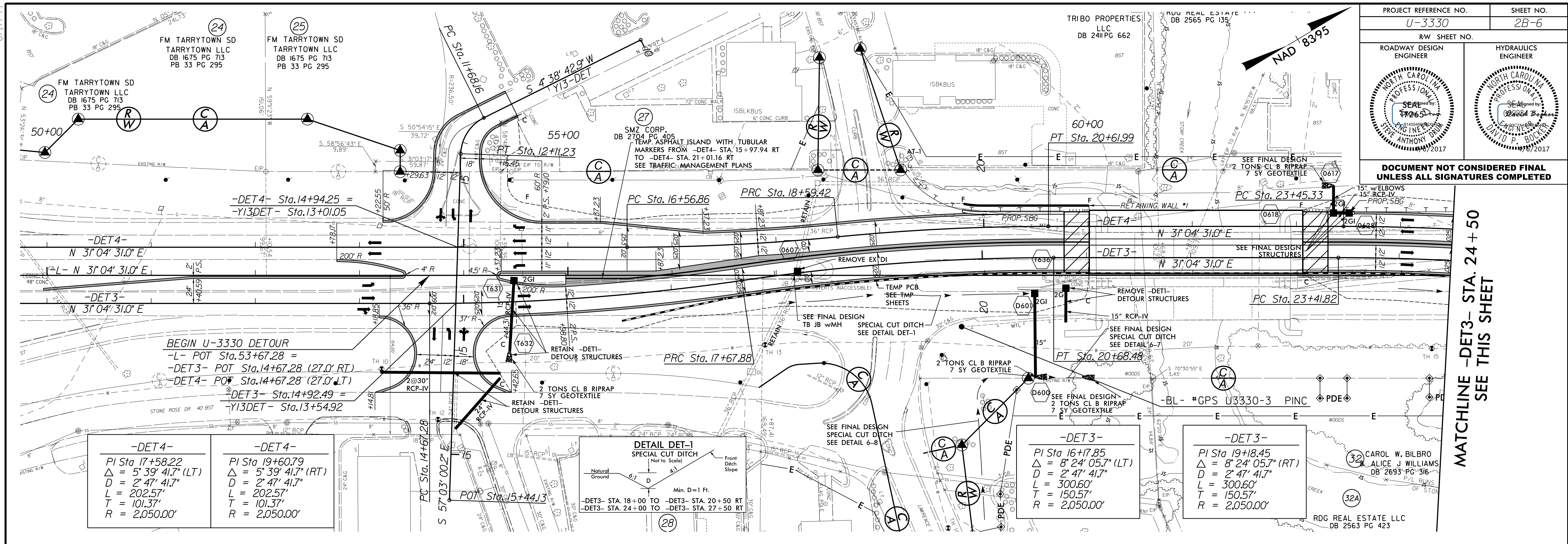
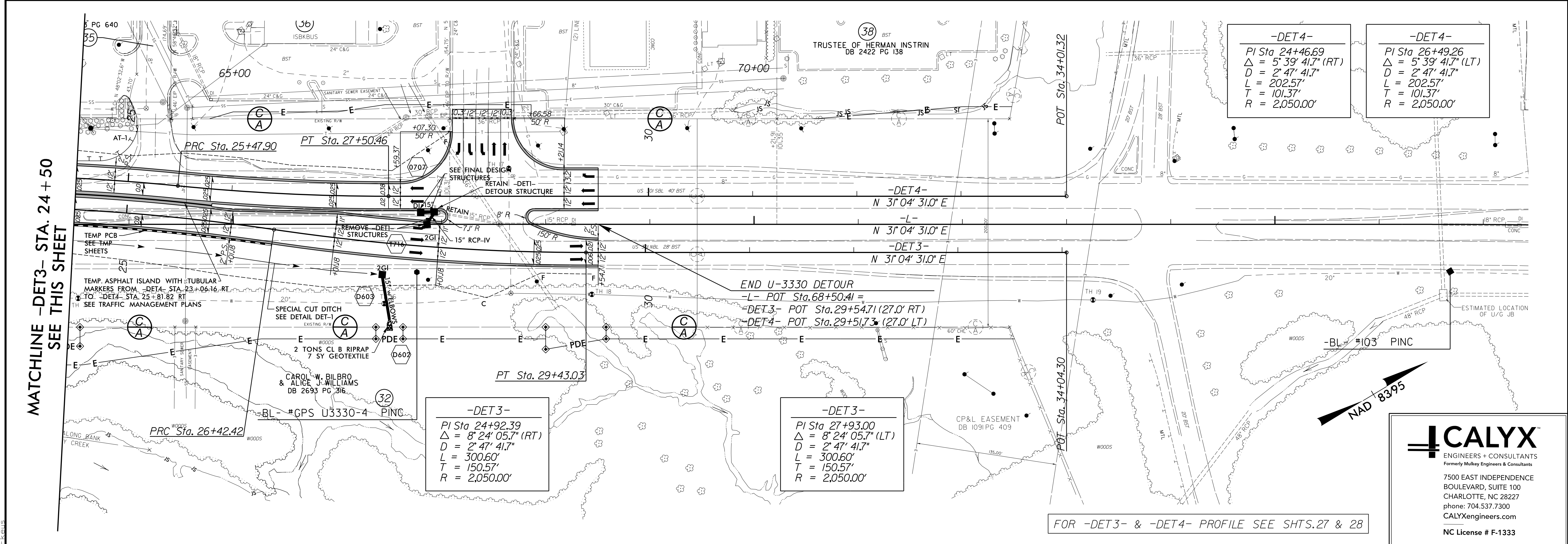


PROJECT REFERENCE NO. U-3330		SHEET NO. 2B-6	
ROADWAY DESIGN ENGINEER		HYDRAULICS ENGINEER	
			
DOCUMENT NOT CONSIDERED FINAL UNLESS ALL SIGNATURES COMPLETED			



MATCHLINE -DET3- STA. 24 + 50
SEE THIS SHEET



MATCHLINE -DET3- STA. 24 + 50
SEE THIS SHEET

FOR -DET3- & -DET4- PROFILE SEE SHTS. 27 & 28

CALYX
 ENGINEERS + CONSULTANTS
 Formerly Mulvey Engineers & Consultants
 7500 EAST INDEPENDENCE
 BOULEVARD, SUITE 100
 CHARLOTTE, NC 28227
 phone: 704.537.7300
 CALYXengineers.com
 NC License # F-1333