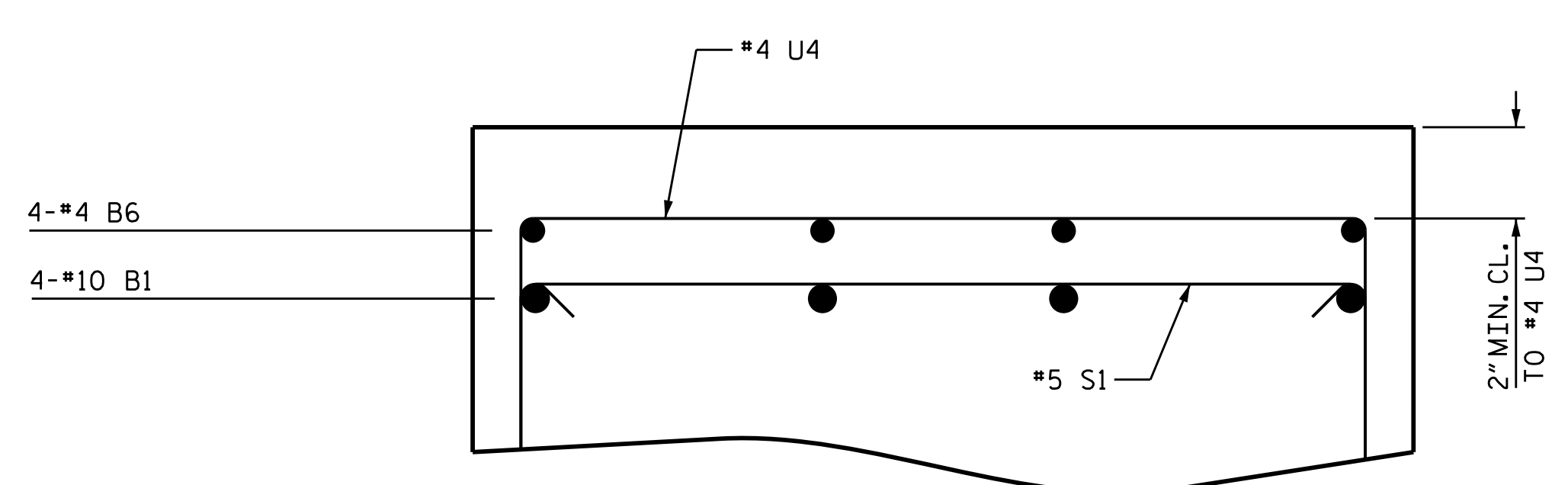
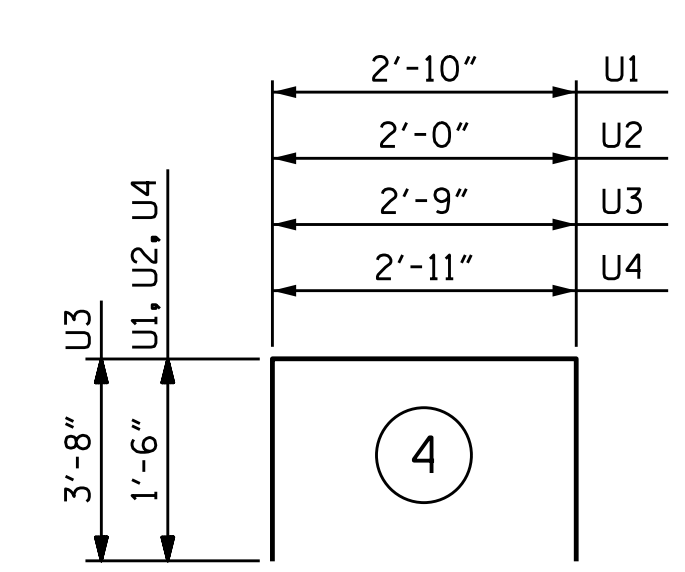
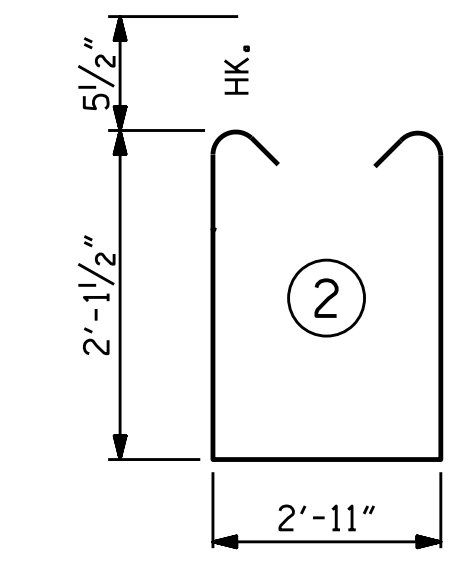
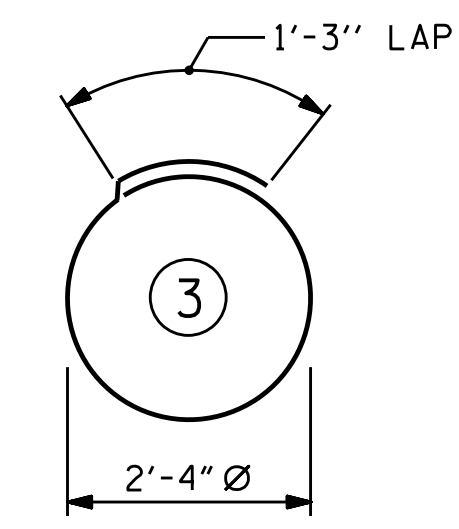
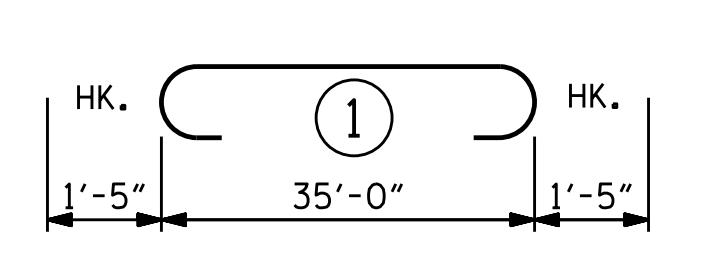


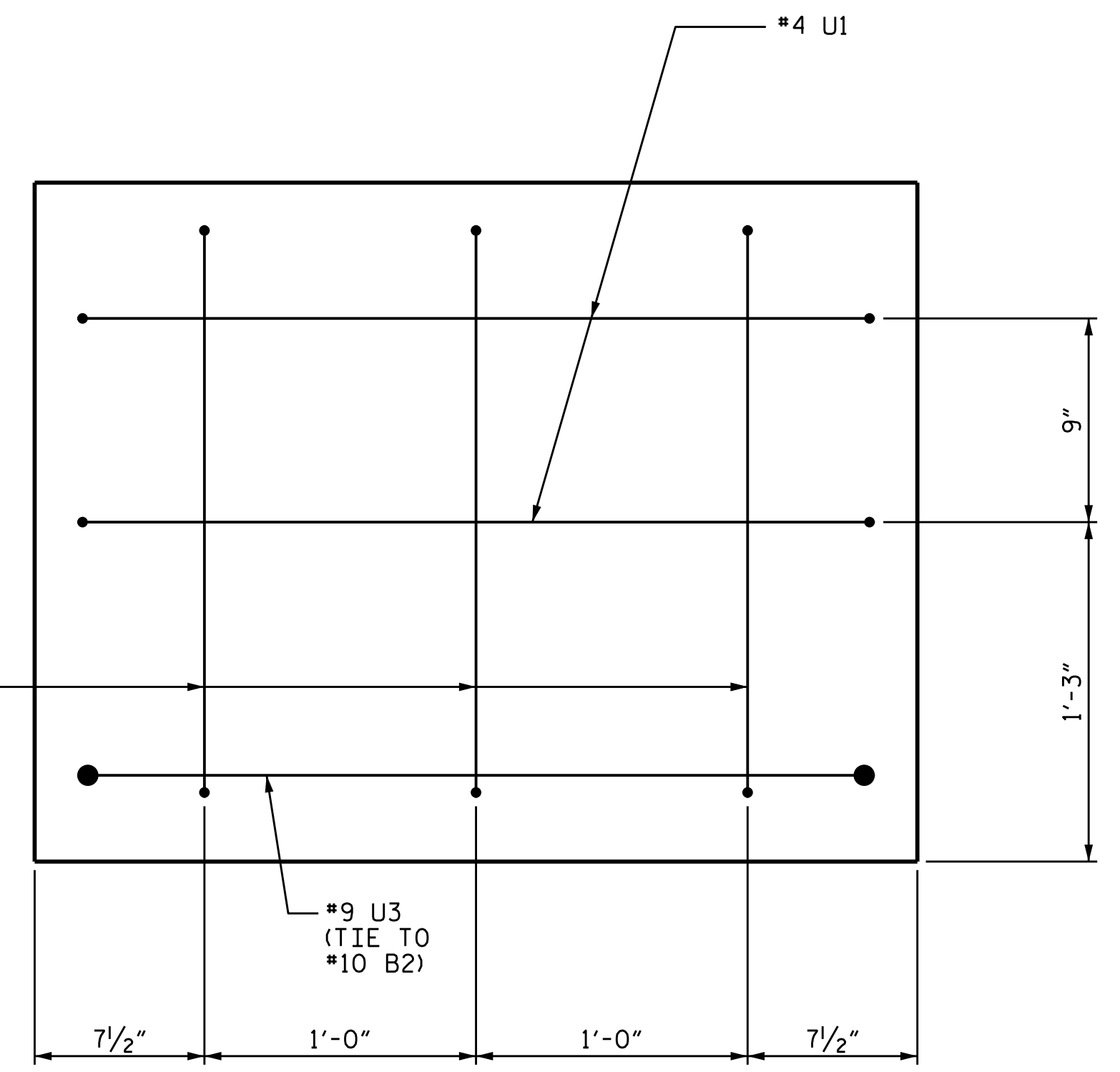
SECTION A-A



PART SECTION B-B



ALL BAR DIMENSIONS ARE OUT TO OUT.



END OF CAP VIEW
(TYPICAL BOTH ENDS)

BILL OF MATERIAL
FOR ONE BENT

BAR	NO.	SIZE	TYPE	LENGTH	WEIGHT
B1	4	#10	1	37'-10"	651
B2	4	#10	STR	35'-2"	605
B3	4	#5	STR	35'-2"	147
B4	8	#4	STR	18'-10"	101
B5	9	#4	STR	2'-11"	18
B6	4	#4	STR	19'-0"	51
D1	44	#6	STR	1'-6"	99
S1	32	#5	2	8'-1"	270
S2	14	#4	3	8'-7"	80
U1	4	#4	4	5'-10"	16
U2	6	#4	4	5'-0"	20
U3	2	#9	4	10'-1"	69
U4	13	#4	4	5'-11"	51

REINFORCING STEEL (FOR ONE BENT)	2178 LBS
CLASS A CONCRETE BREAKDOWN (FOR ONE BENT)	
TOTAL CLASS A CONCRETE	▲ 11.1 C.Y.
PP 18 x 0.50 GALVANIZED STEEL PILES (FOR ONE BENT)	
No. 7	LIN. FT. 525
PIPE PILE PLATES	No. = 7
PILE REDRIVES	No. = 4
PILE DRIVING EQUIPMENT SETUP FOR PP 18 X 0.50 GALVANIZED STEEL PILES	No. = 7

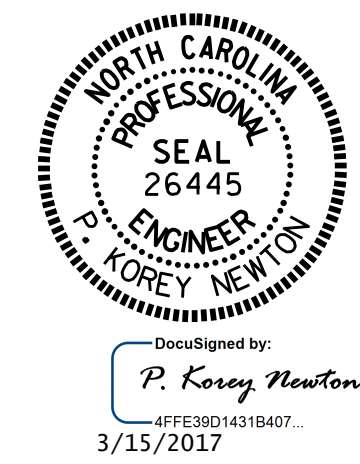
▲ CONCRETE DISPLACED BY THE PP 18 x 0.50 GALVANIZED STEEL PILES HAS BEEN DEDUCTED FROM THE CONCRETE QUANTITY.

PROJECT NO. B-4771
JOHNSTON COUNTY
 STATION: 16+82.00 -L-

SHEET 2 OF 3

STATE OF NORTH CAROLINA
 DEPARTMENT OF TRANSPORTATION
 RALEIGH

SUBSTRUCTURE
 BENTS 1 & 2



DocuSigned by:
 P. Corey Newton
 4FF93BD1451B407.
 3/15/2017

DOCUMENT NOT CONSIDERED FINAL UNLESS ALL SIGNATURES COMPLETED

REVISIONS						SHEET NO.	
NO.	BY:	DATE:	NO.	BY:	DATE:	S-17	
1			3			TOTAL SHEETS 20	
2			4				

DRAWN BY : <u>P. K. NEWTON</u>	DATE : <u>11/23/16</u>
CHECKED BY : <u>H. A. LOCKLEAR</u>	DATE : <u>12/12/16</u>
DRAWN BY : <u>DGE 05/10</u>	REV. <u>9/15</u>
CHECKED BY : <u>MKT 05/10</u>	MAA/TMG