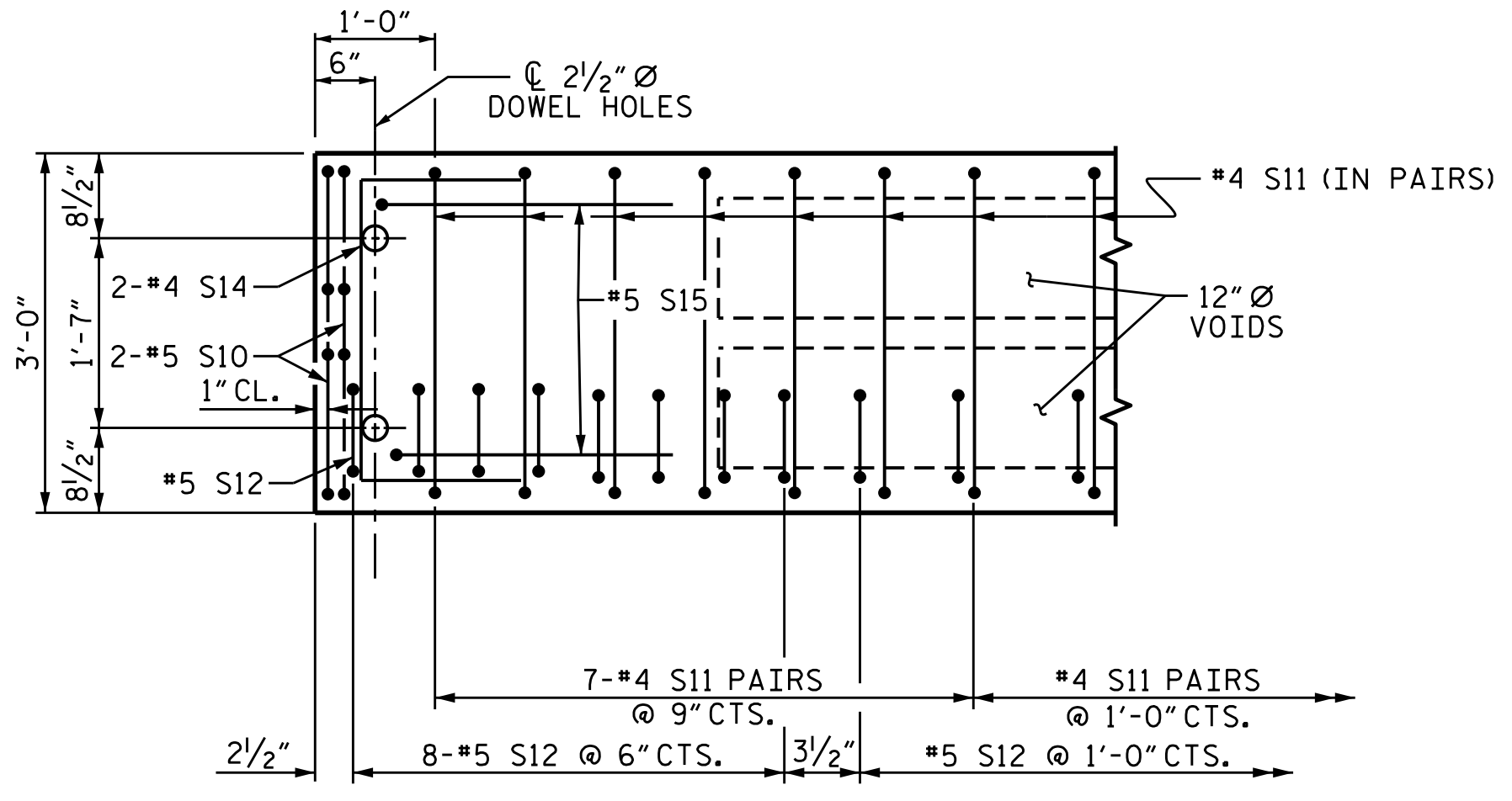


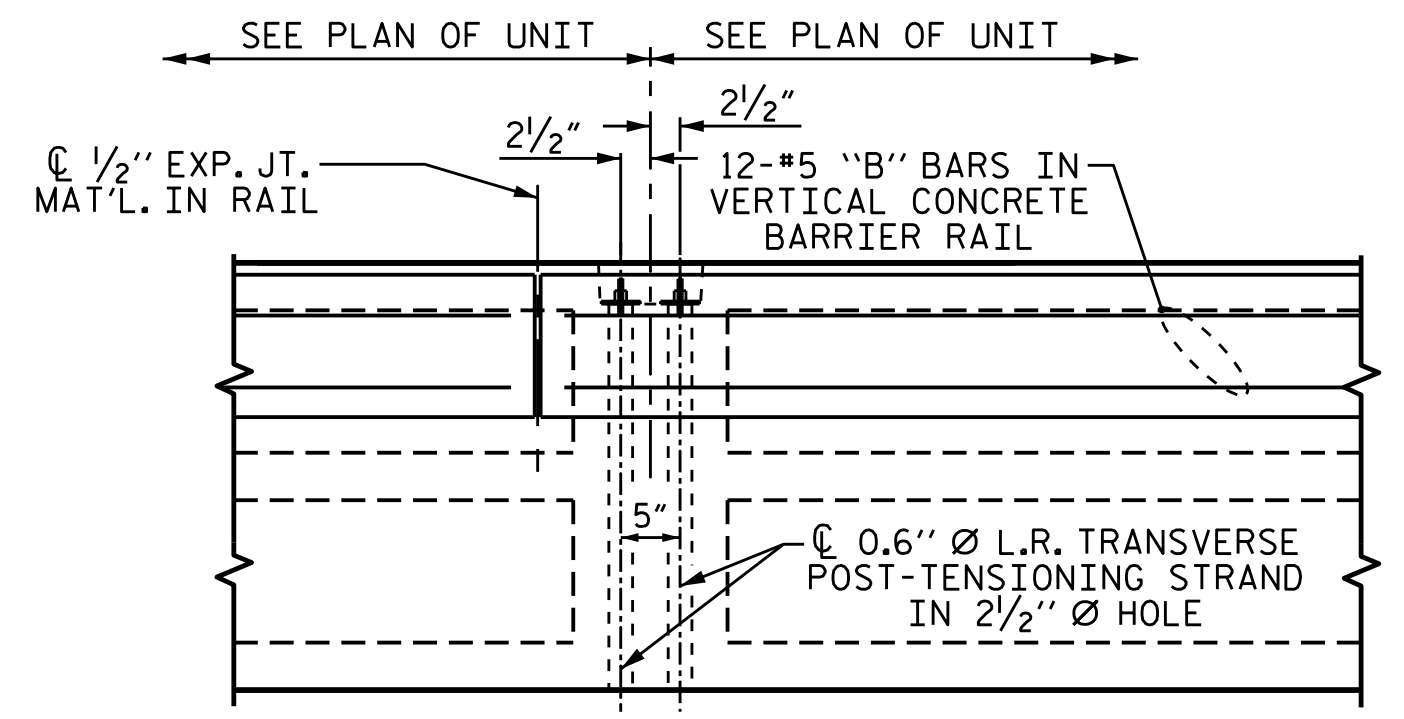
**PLAN OF UNIT**

NO CRANE SHALL BE PLACED NOR OPERATED ON SPAN B.



**DETAIL "A"**

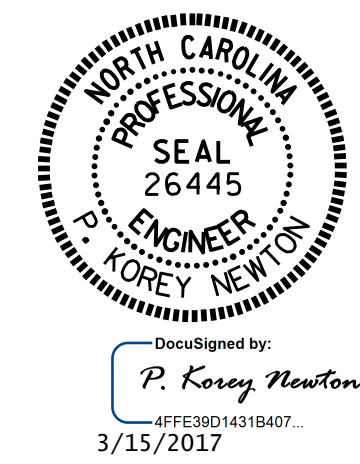
(TYPICAL EACH END OF UNIT)  
NOTE: EXTERIOR UNIT SHOWN - INTERIOR UNIT SIMILAR EXCEPT OMIT #5 S12 BARS.



**DETAIL "B"**

#4 S11 BARS MAY BE SHIFTED AS NECESSARY TO MAINTAIN 1" CLEAR TO GROUDED RECESS AND 2 1/2" Ø TRANSVERSE POST-TENSIONING STRAND HOLES

ASSEMBLED BY :	P. K. NEWTON	DATE :	11/28/16
CHECKED BY :	H. A. LOCKLEAR	DATE :	12/12/16
DRAWN BY :	MAA	REV. 12/5/11	MAA/AAC
CHECKED BY :	MKT	REV. 8/14	MAA/TMG



PROJECT NO. B-4771  
JOHNSTON COUNTY  
STATION: 16+82.00 -L-

SHEET 3 OF 5

STATE OF NORTH CAROLINA  
DEPARTMENT OF TRANSPORTATION  
RALEIGH  
**PLAN OF 65' UNIT**  
**30'-10" CLEAR ROADWAY**  
**90° SKEW**

REVISIONS						SHEET NO.
NO.	BY:	DATE:	NO.	BY:	DATE:	S-8
1			3			TOTAL SHEETS
2			4			20

DOCUMENT NOT CONSIDERED FINAL UNLESS ALL SIGNATURES COMPLETED