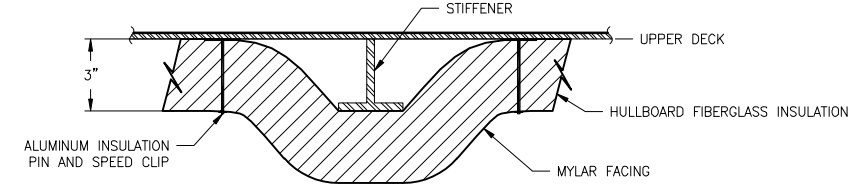
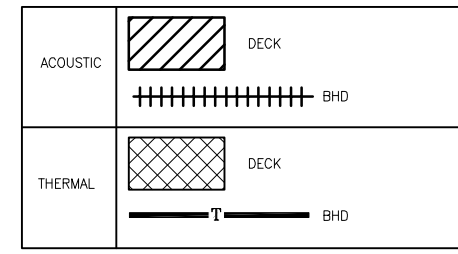
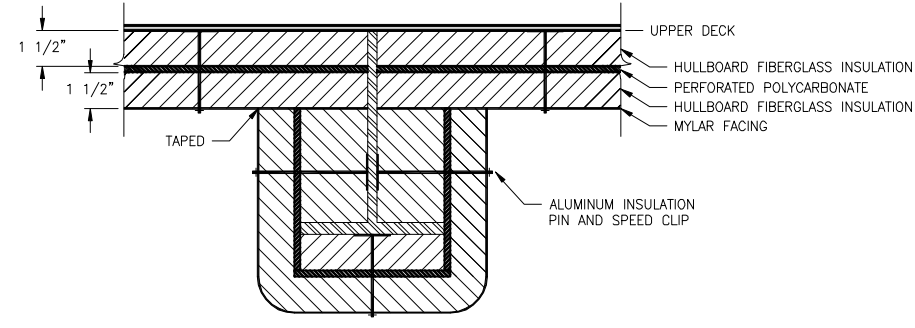


CONFIDENTIAL AND PROPRIETARY PROPERTY OF  
**Elliott Bay Design Group North Carolina, PLLC**  
 MAY NOT BE USED FOR CONSTRUCTION OR PROVIDED TO  
 ANY THIRD PARTIES WITHOUT PRIOR WRITTEN CONSENT.  
 © 2017 ELLIOTT BAY DESIGN GROUP.

**INSULATION KEY**



**DETAIL 1-3D**  
**THERMAL INSULATION**  
 NO SCALE



**DETAIL 1-3C**  
**ACOUSTIC INSULATION**  
 NO SCALE

**LININGS SCHEDULE**

DESCRIPTION	LOCATION	COLOR/FINISH	COMMENTS
JOINER LININGS	ALL INTERIOR SPACES	PAINTED/COLOR TBD	0.065 ALUMINUM SHEET PAINTED. ALUMINUM SQUARE TUBE FURRING WITH DOUBLE SIDED TAPED ADHESIVE
<b>FLOOR COVERINGS</b>			
CUT PILE CARPET CONTINUOUS	PILOTHOUSE	TBD	SHEET STYLE, USCG APPROVED
CUT PILE CARPET CONTINUOUS	PASSENGER CABIN	TBD	SHEET STYLE, USCG APPROVED
TRACTION FLOORING	WET SPACES / FOOD SPACES	TBD	CARRY FLOORING 4" UP BHD
<b>LININGS</b>			
THERMAL INSULATION	OVERHEAD AND BULKHEADS IN PASSENGER CABIN & PILOTHOUSE	FOIL FACED	3 INCH MINIMUM THICKNESS. VAPOR BARRIER MAY BE BoPET POLYESTER FILM/FIBERGLASS FACING OR FOIL FACE
ACOUSTIC INSULATION	OVERHEAD IN ENGINE ROOM	WHITE	INSULATION TO COVER OVERHEAD AND EXTEND DOWN 2 FEET FROM OVERHEAD ON SIDES AND BULKHEADS. SANDWICH BASE LAYER OF INSULATION (MIL-1-742, TY. II), PERFORATED POLYCARBONATE 1LB/SQFT, TOP LAYER INSULATION (MIL-1-22023, TY. III) WITH FACING TAPED AND SEALED. FINISH WITH PERFORATED ALUMINUM SHEET METAL LINING.
ACOUSTIC INSULATION	OVERHEAD AND BULKHEADS OF ACCESS TRUNKS	WHITE	SANDWICH BASE LAYER OF INSULATION (MIL-1-742, TY. II), PERFORATED POLYCARBONATE 1LB/SQFT, TOP LAYER INSULATION (MIL-1-22023, TY. III) WITH FACING TAPED AND SEALED. FINISH WITH PERFORATED ALUMINUM SHEET METAL LINING.

**REVISION HISTORY**

REV	ZONE	DESCRIPTION	DWN	DATE	APVD
A	1-5D	1. REMOVED MANUFACTURER AND MODEL NAMES FROM THE LININGS SCHEDULE. ADDED MIL-SPECS	JHP	3/24/17	JAT

**GENERAL NOTES**

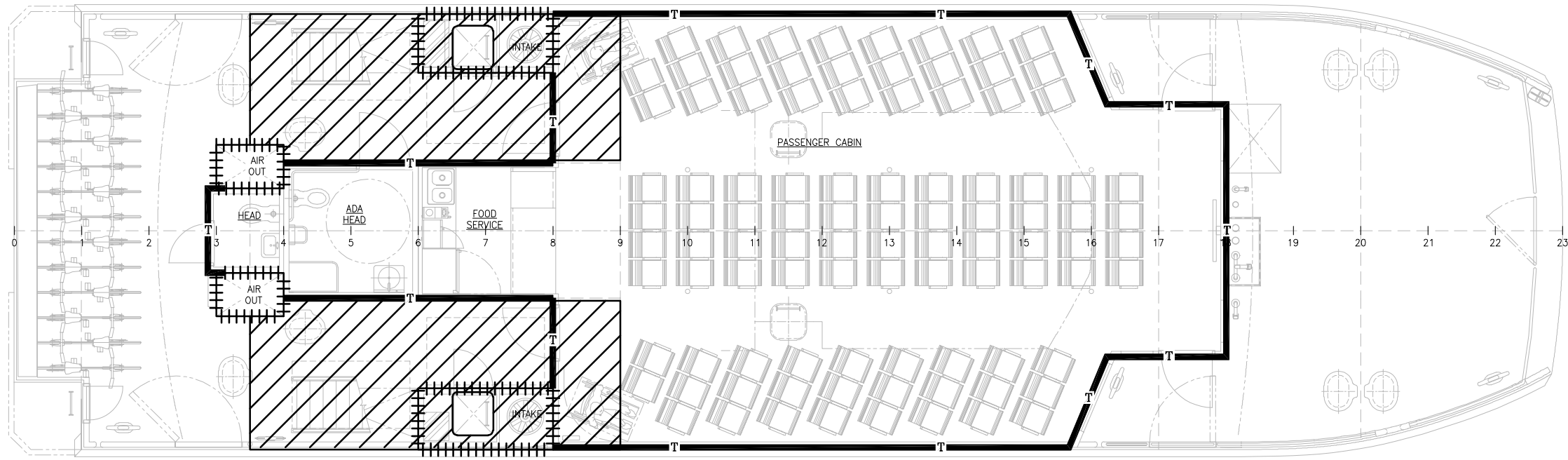
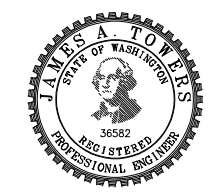
- ALL MATERIALS AND WORKMANSHIP SHALL BE IN ACCORDANCE WITH 46 CFR SUBCHAPTER T REGULATIONS.
- IN WAY OF ENGINE ROOM ACCESS TRUNKS AND MACHINERY SPACES ADD PERFORATED SHEET METAL LININGS. LININGS SHALL BE 12 GAUGE WITH Ø1/16" HOLES LOCATED 3/32" ON CENTER AND TOTAL OPEN AREA OF 41%. PERFORATED SHEET METAL LININGS ARE NOT REQUIRED IN THE AIR OUTLET DUCTS FROM THE ENGINE ROOM.

**REFERENCES**

- 16109-003-802-0 CONTRACT SPECIFICATIONS
- 16109-003-101-1 PROFILES AND ARRANGEMENTS



**Elliott Bay Design Group North Carolina, PLLC**  
 CLIENT: NORTH CAROLINA D.O.T., RALEIGH, NORTH CAROLINA  
 PROJECT: PEDESTRIAN FERRY



**MAIN DECK**

**INSULATION & LININGS PLAN**

SIZE	DWG NO.	REV
D	16109-003-635-0	A
SCALE	FILE NAME	SHEET
1/4"=1'-0"	16109-003-635-0A	1 OF 2
DWN	MOD	CKD
DKG		NJB
	APVD	JAT
	APVD DATE	3/3/2017

3/24/2017 12:16:36 PM

6

5

4

3

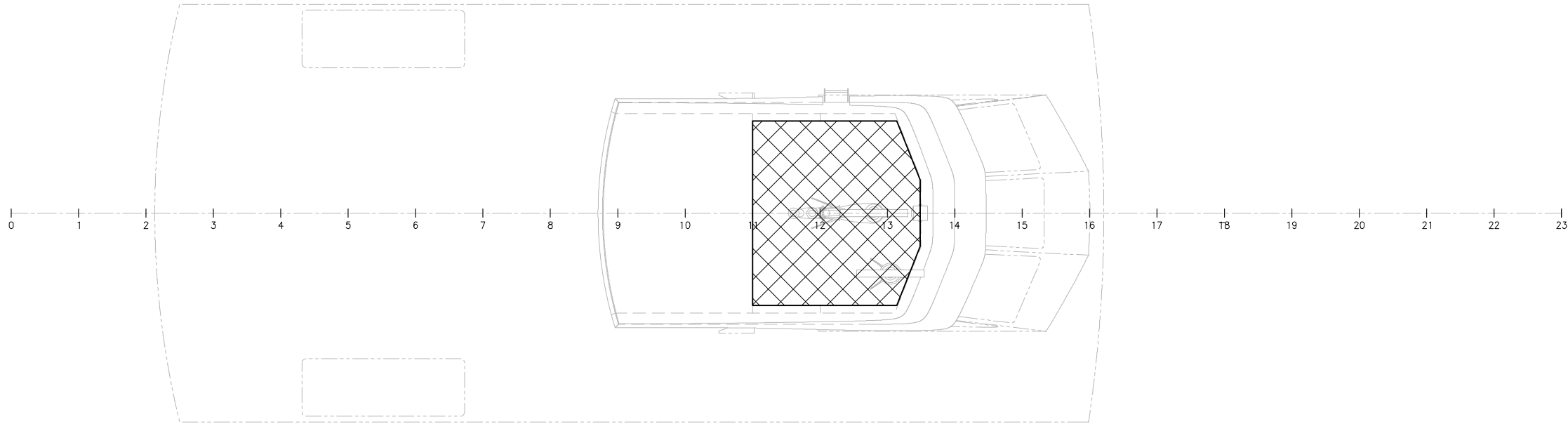
2

1

CONFIDENTIAL AND PROPRIETARY PROPERTY OF  
**Elliott Bay Design Group North Carolina, PLLC**  
MAY NOT BE USED FOR CONSTRUCTION OR PROVIDED TO  
ANY THIRD PARTIES WITHOUT PRIOR WRITTEN CONSENT.  
© 2017 ELLIOTT BAY DESIGN GROUP.

D

D



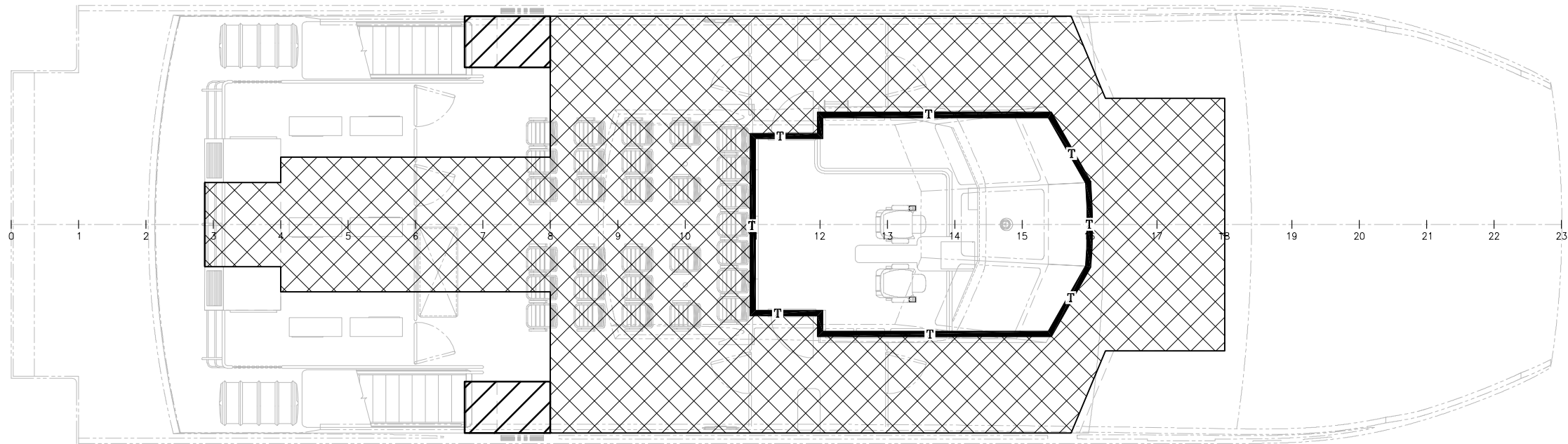
PILOT HOUSE TOP

C

C

B

B



UPPER DECK

B

B

A

A



SIZE	D	DWG NO.	16109-003-635-0	REV	A
SCALE	1/4"=1'-0"	FILE NAME	16109-003-635-0A	SHEET	2 OF 2

6

5

4

3

2

1

3/24/2017 12:16:52 PM