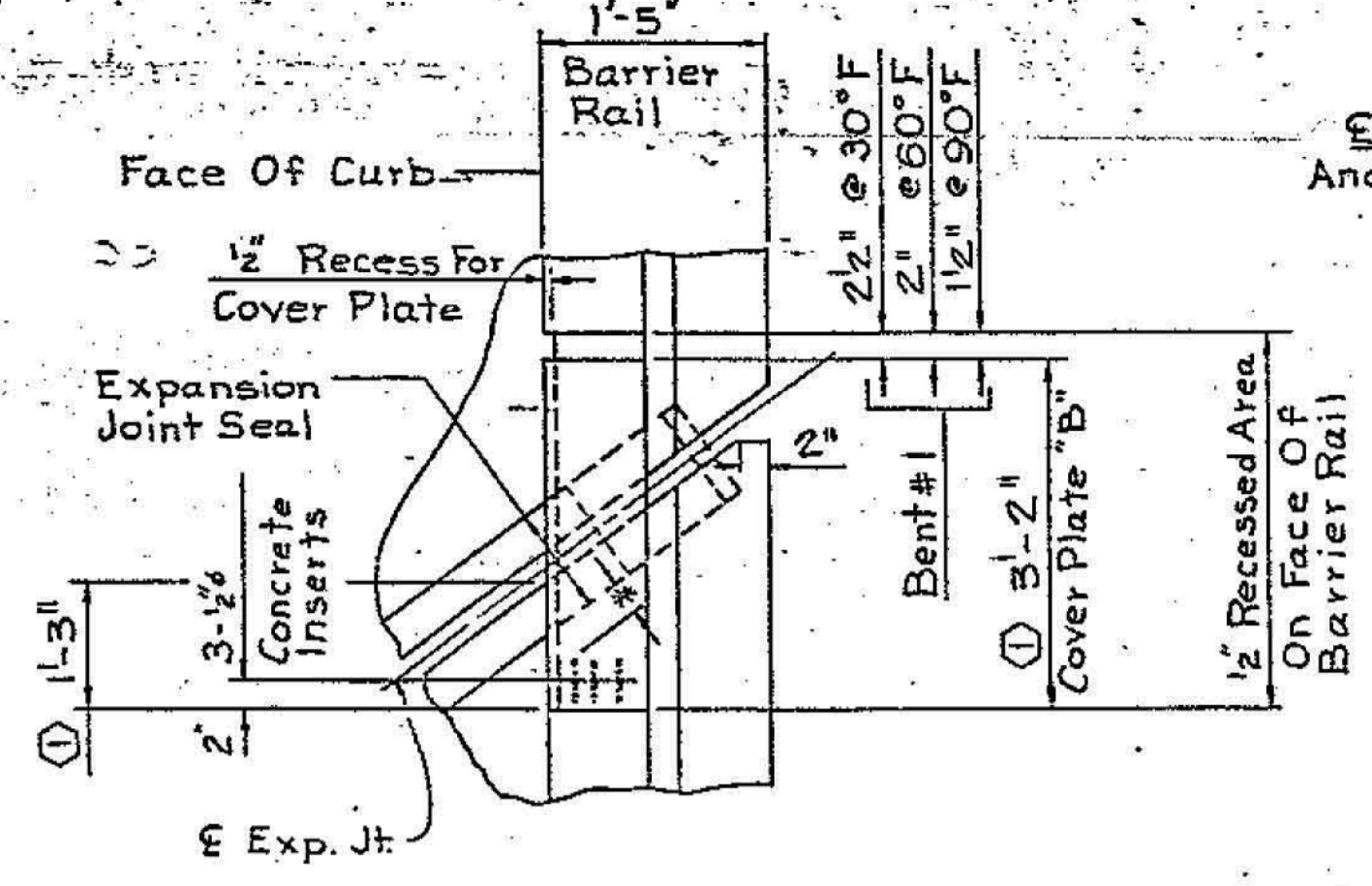
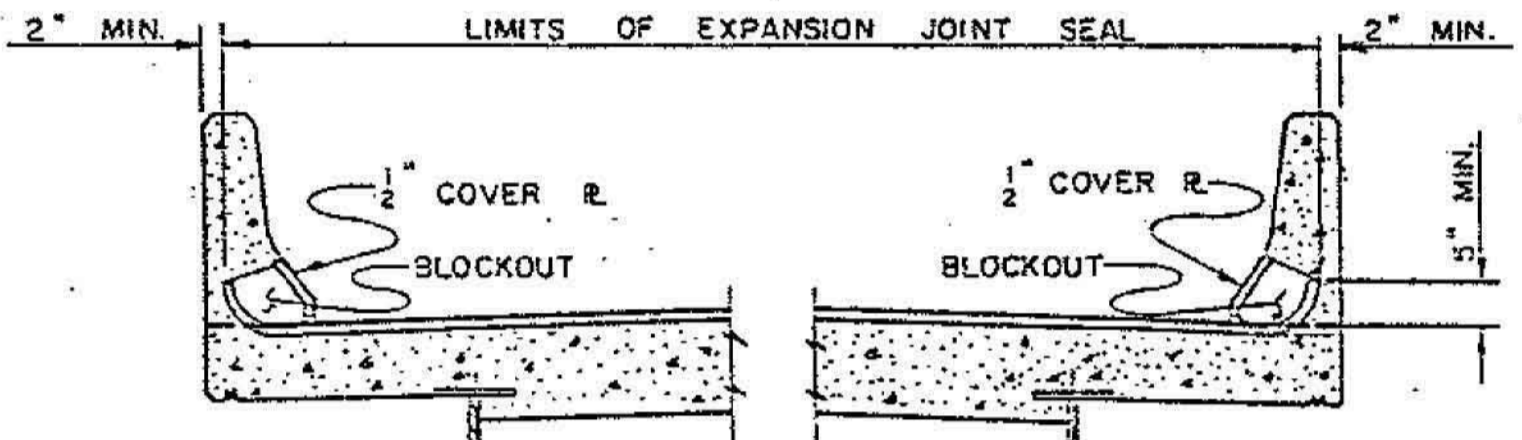


PLAN OF EXPANSION JOINT SEAL-LEFT SIDE

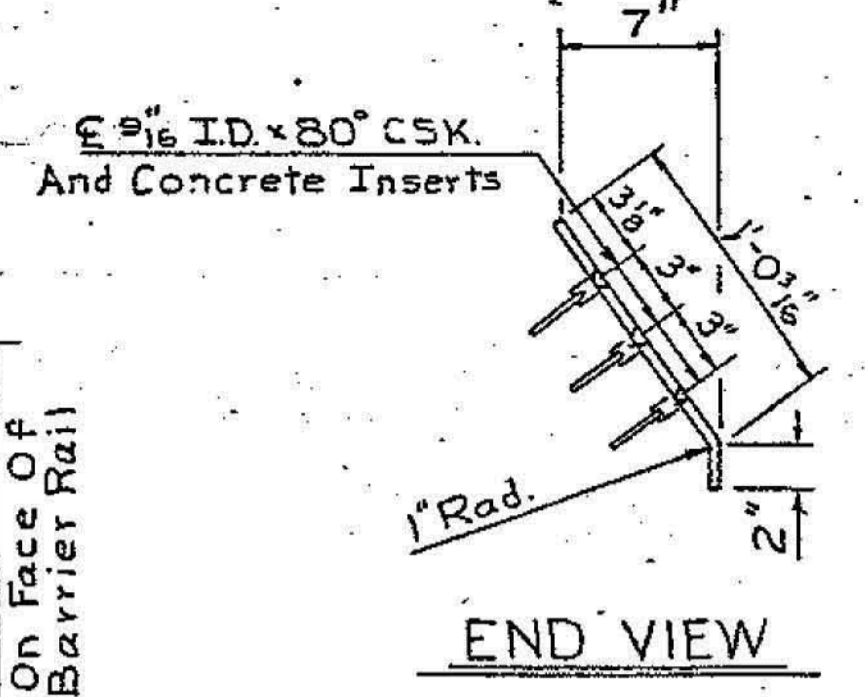
TWO-WAY TRAFFIC



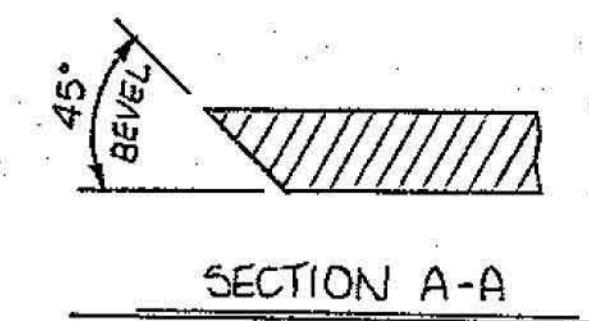
PLAN OF EXPANSION JOINT SEAL-RIGHT SIDE



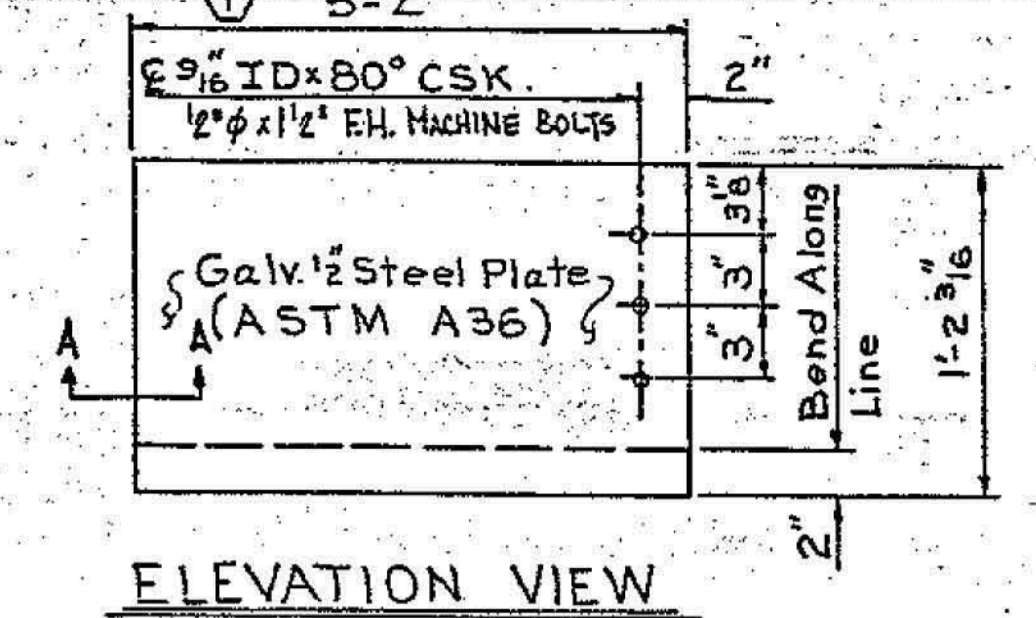
SKETCH SHOWING LIMITS OF EXPANSION JOINT SEAL - BARRIER RAIL



END VIEW

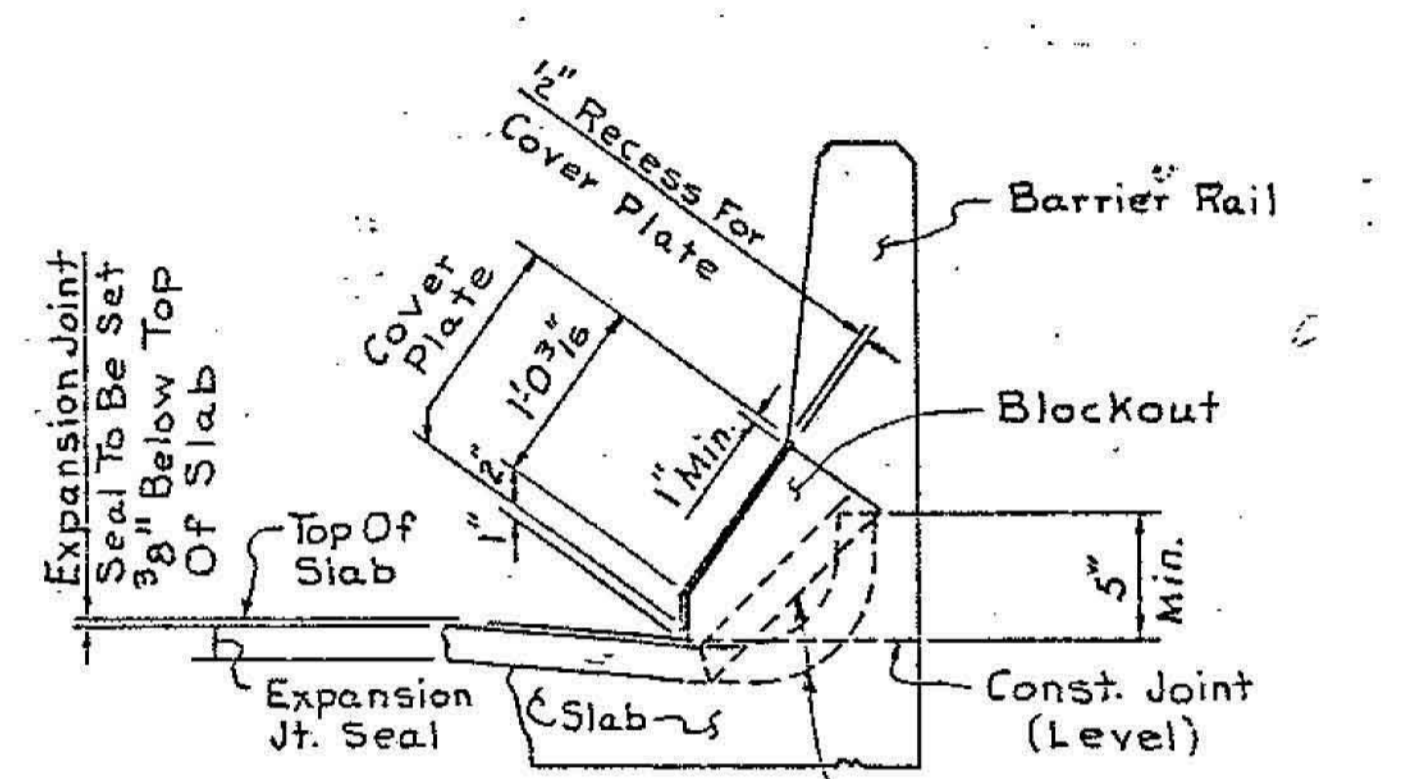


SECTION A-A



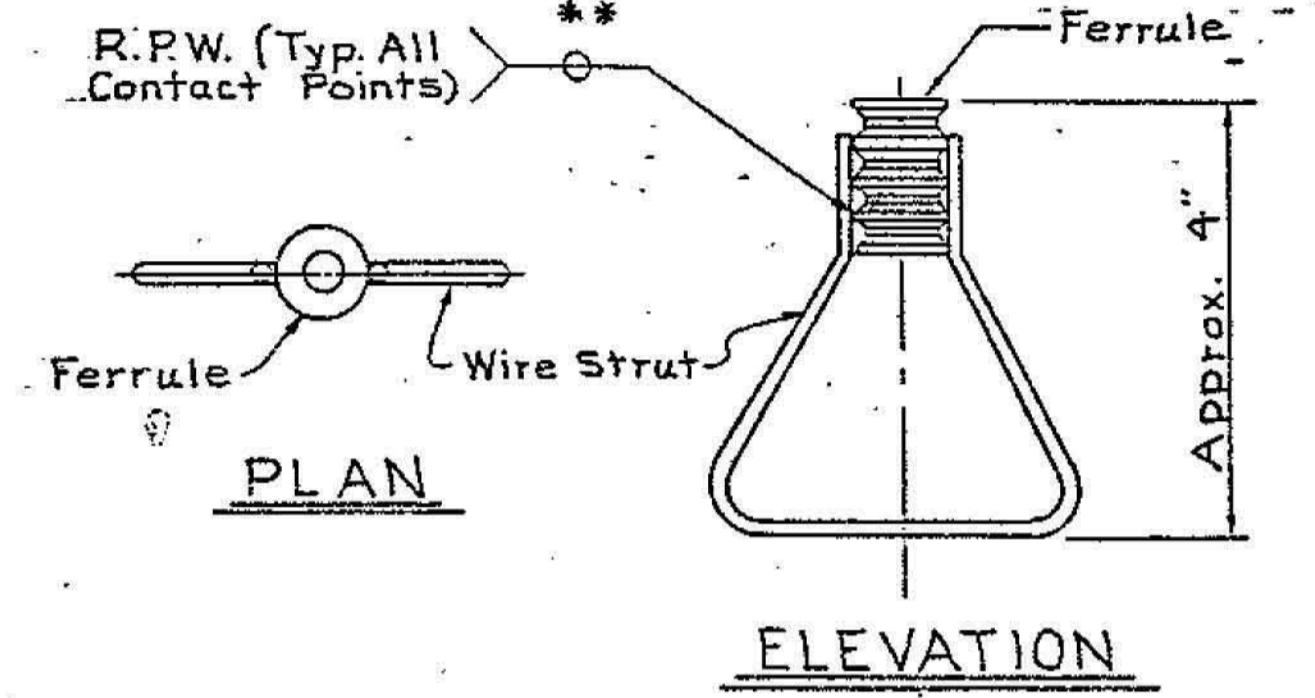
ELEVATION VIEW

COVER PLATE "B"



SECTION THRU RAIL @ JOINT

Showing Cover Plate And Expansion Joint Seal



PLAN

ELEVATION

CONCRETE INSERT

\*\* Each Welded Attachment Of Wire To Ferrule Shall Develop The Tensile Strength Of The Wire.

- COVER PLATE NOTES
- COVER PLATES ARE TO CONFORM TO THE REQUIREMENTS OF ASTM A-36 AND ARE TO BE GALVANIZED AFTER FABRICATION TO CONFORM TO THE REQUIREMENTS OF ASTM A-123.
  - THE COST OF THE COVER PLATE, IN PLACE, IS TO BE INCLUDED IN THE LUMP SUM PRICE BID FOR "EXPANSION JOINT SEAL".
  - DETAILS OF COVER PLATE ARE SUBJECT TO CHANGE DEPENDING ON DETAILS OF EXPANSION JOINT SEAL FURNISHED.
  - FOR EXPANSION JOINT SEAL, SEE SPECIAL PROVISIONS.

FOR INFORMATION ONLY

DRAWING C24 OF 24

CONCRETE INSERT NOTES

- The 1/2 Structural Concrete Insert Shall Have A Working Load Tensile Capacity Of 2500 Lbs. The Ferrule May Be Open Or Closed And Will Engage A 1/2 Bolt With NC Threads.
- Ferrules Shall Be Made From Steel Meeting The Requirements Of ASTM A108, Grade 12L14. Inserts Shall Be Tapped To The Dimensional Requirements Specified In ASTM A563 For Nuts Receiving Galvanized Bolts.
- The 1/2 x 1/2 Flat Head Machine Bolts Shall Conform To The Requirements Of ASTM A307. Bolts Shall Be Galvanized.
- At The Contractor's Option, Stainless Steel Bolts May Be Used As An Alternate For The 1/2 x 1/2 Galvanized Flat Head Machine Bolts. They Shall Conform To Or Exceed The Mechanical Requirements Of ASTM A307. The Use Of This Alternate Shall Be Approved By The Engineer.
- The Insert Assembly With Bolt Shall Be Assembled In The Shop.

PROJECT NO. 8.1457904  
ORANGE - DURHAM COUNTY  
STATION: 775+38.88 -L-Med.

STATE OF NORTH CAROLINA  
DEPARTMENT OF TRANSPORTATION  
RALEIGH  
SUPERSTRUCTURE  
EXPANSION JOINT SEAL  
DETAILS AT BARRIER RAIL

REVISIONS					SHEET NO. 3-28
NO.	BY	DATE	NO.	DATE	
1			2		TOTAL SHEETS
2			2		101

ASSEMBLED BY JTWEBERT	DATE DEC '83	SPECIAL
CHECKED BY J.M. BRIT	DATE FEB. 84	
DRAWN BY Randy Bissette	DATE 6-17-82	STANDARD
CHECKED BY P.D. Lambert	DATE 6-1-82	

\* A 2" Minimum Clear Distance Shall Be Required Between The Expansion Joint Seal And Wire Struts.  
A 2" Minimum Clear Distance Shall Be Required Between The Surfaces Of The Barrier Rail And The Expansion Joint Seal And/Or Its Anchors.