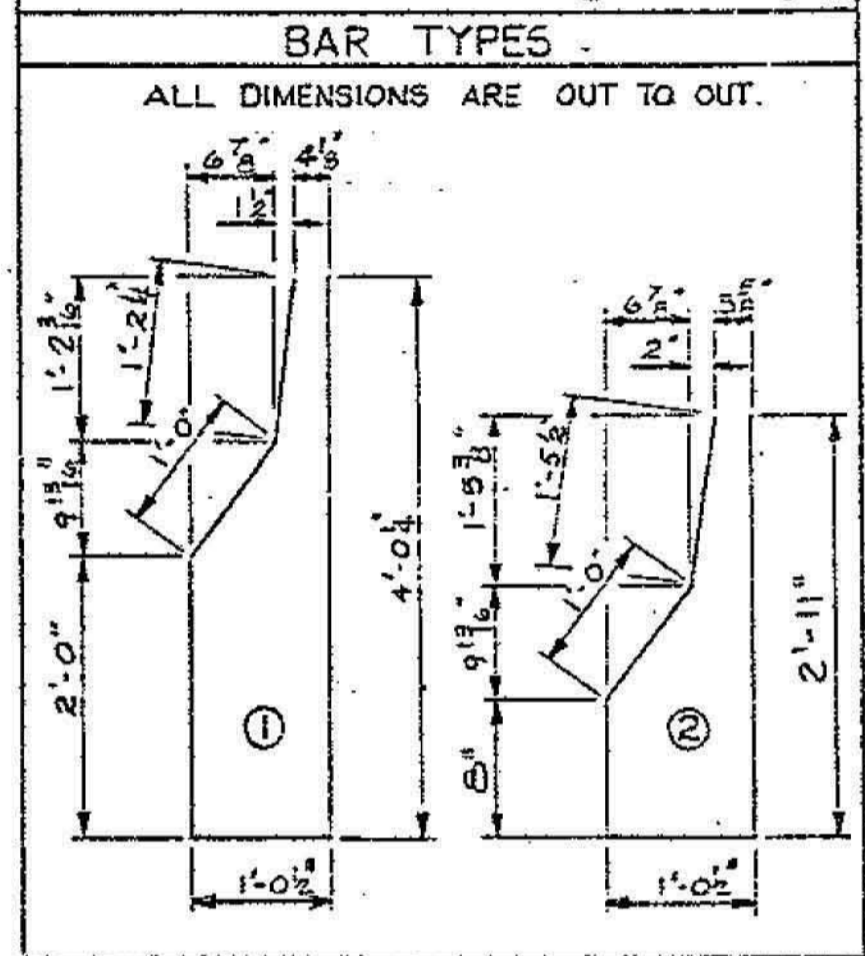


**BILL OF MATERIAL**  
FOR BARRIER RAIL ONLY

BAR	NO.	SIZE	TYPE	LENGTH	WEIGHT
E1	8	#5	1	9'-3"	77
E2	558	#5	2	7'-1"	4122
F1	6	#5	STR	26'-2"	164
F2	6	#5	STR	24'-7"	154
F3	6	#5	STR	28'-9"	180
F4	72	#5	STR	28'-6"	2140
F5	6	#5	STR	22'-2"	139
F6	48	#5	STR	15'-3"	763
REINFORCING STEEL =					7739 LBS.
CLASS 'AA' CONCRETE =					52.1 CU. YDS.
CONCRETE BARRIER RAIL =					567.5 LF.
					566.9 LF.



**NOTES**

FOR CONCRETE BARRIER RAIL, SEE SPECIAL PROVISIONS.

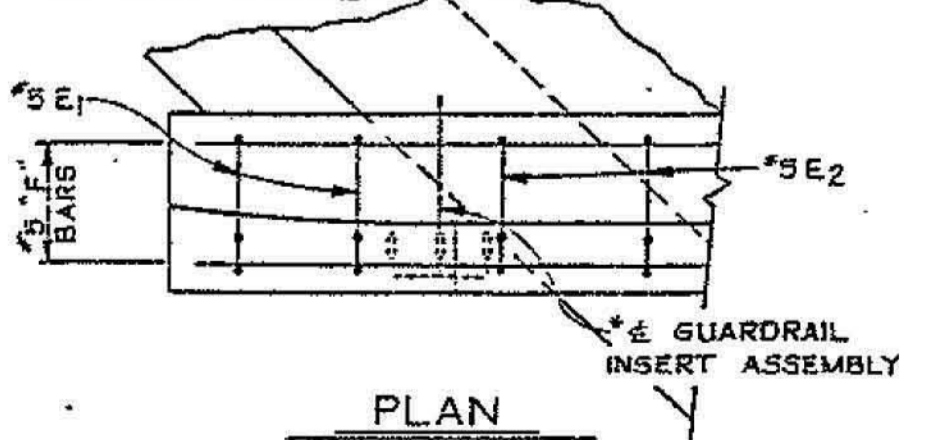
BARRIER RAIL IN EACH SPAN SHALL NOT BE CAST UNTIL ALL SLAB CONCRETE IN THAT SPAN HAS BEEN CAST AND HAS REACHED A MINIMUM COMPRESSIVE STRENGTH OF 3,000 PSI.

THE 1" Δ GROOVE AT THE CONSTRUCTION JOINT MAY BE OMITTED.

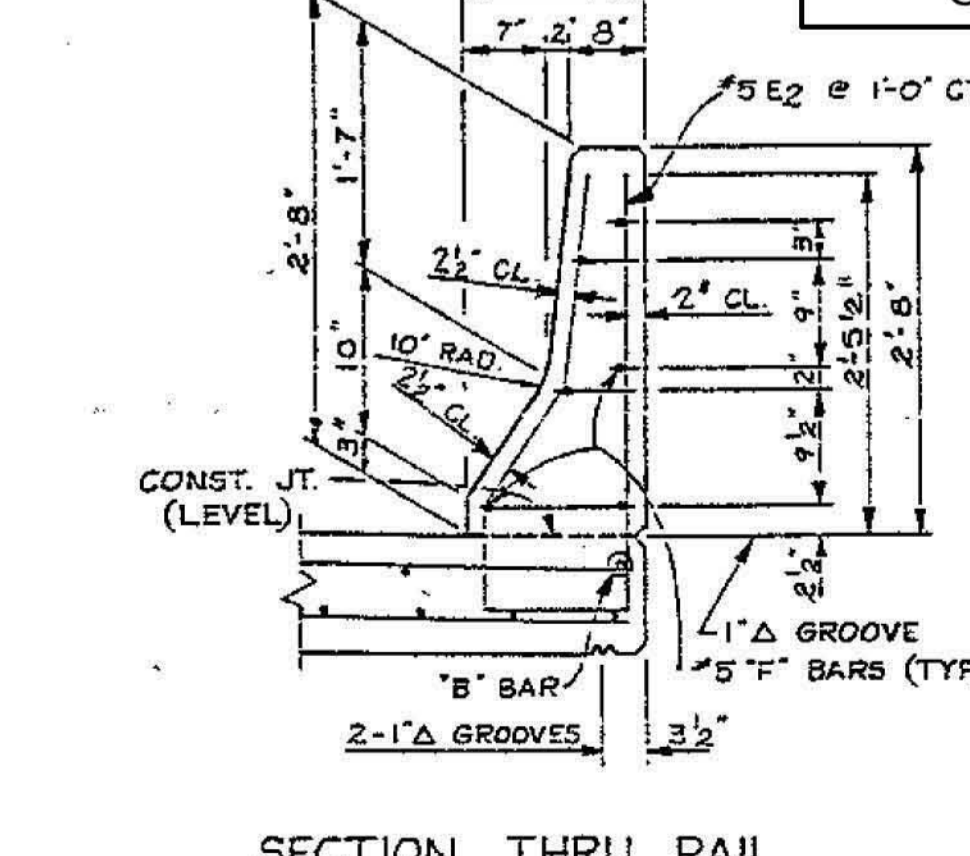
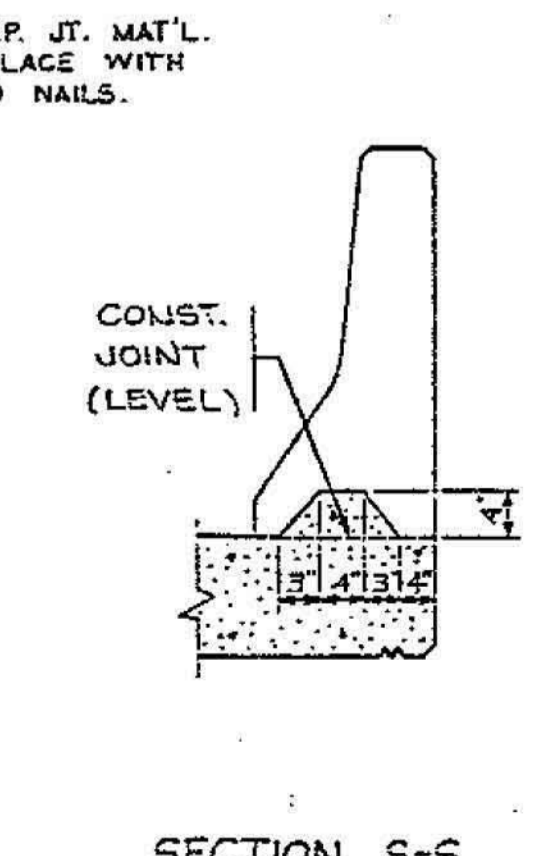
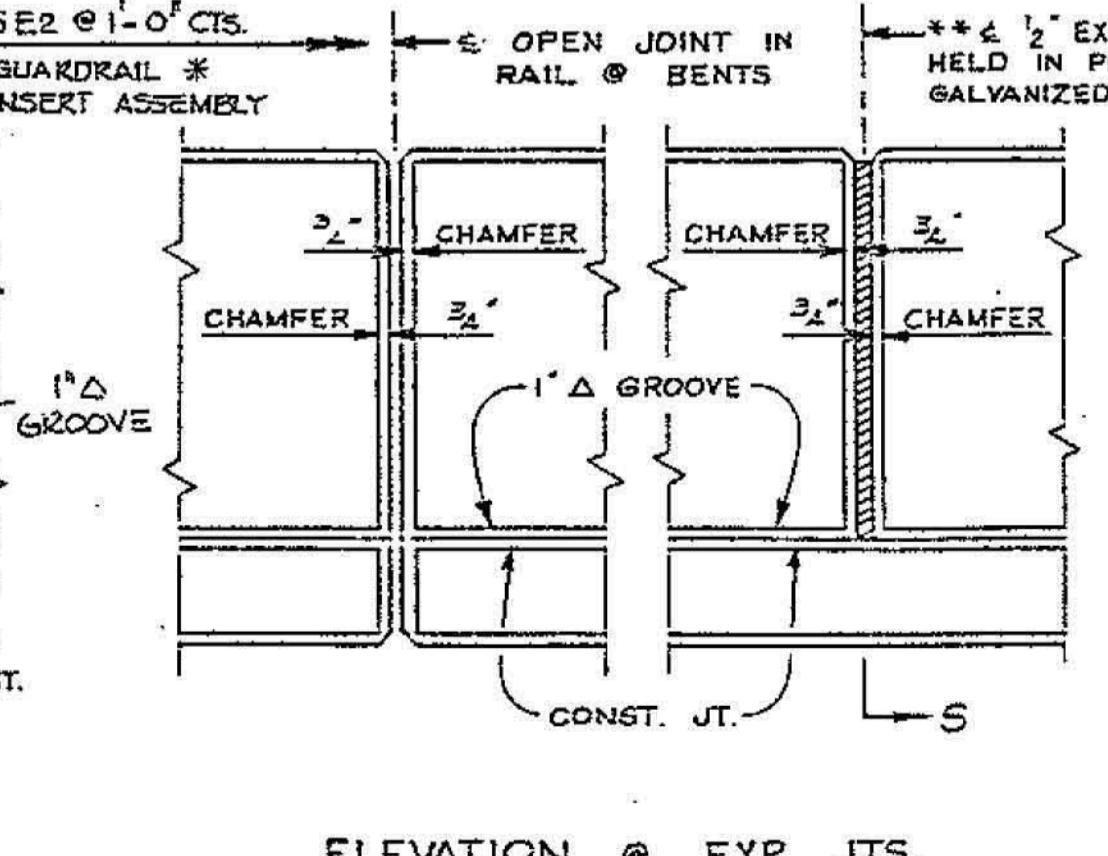
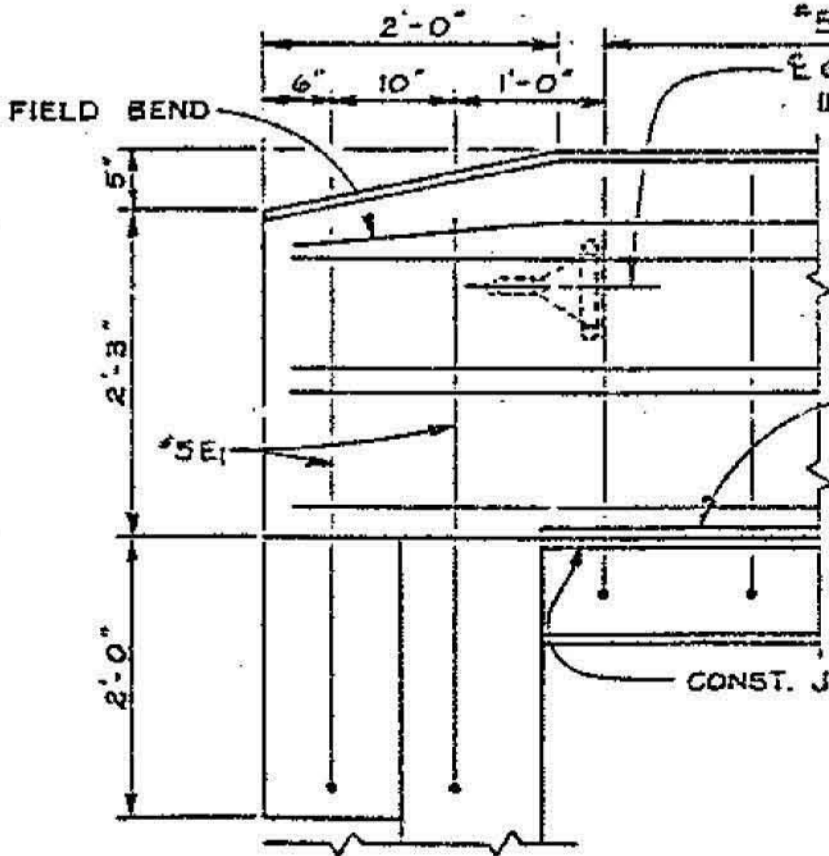
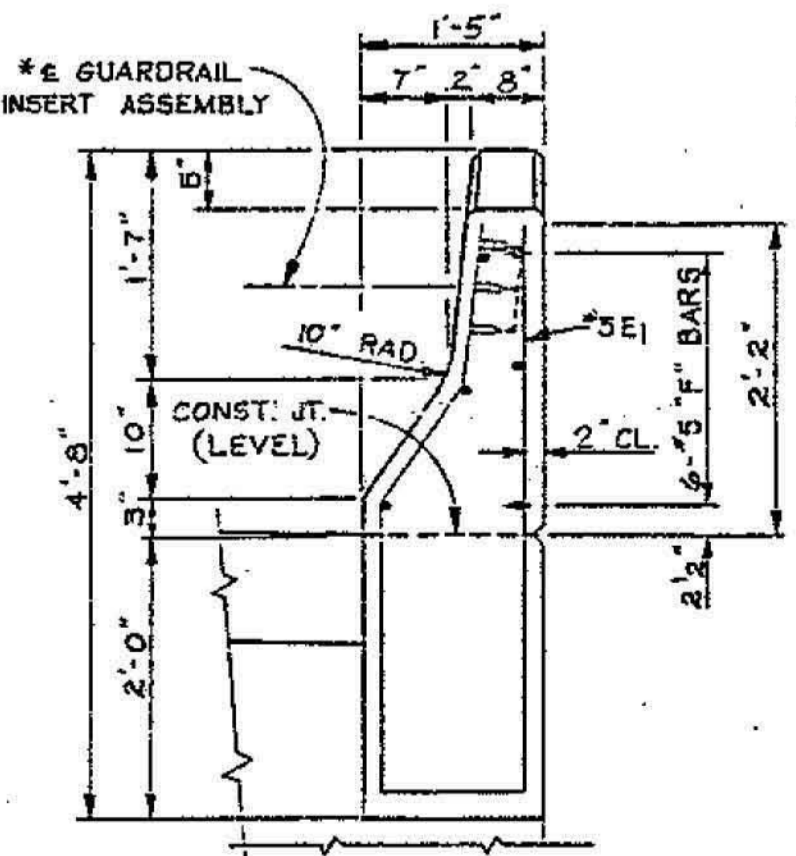
**FOR INFORMATION ONLY**

**DRAWING C22 OF 24**

A 1/2" EXTENSION OF THE CONCRETE SLAB BEYOND THE OUTSIDE FACE OF THE BARRIER RAIL WILL BE PERMITTED IF THE CONTRACTOR ELECTS TO SLIP FORM THE BARRIER RAILS. NO ADDITIONAL REINFORCING STEEL IS REQUIRED AND THE PAYMENT FOR THE REINFORCED CONCRETE DECK SLAB WILL BE FOR THE QUANTITY SHOWN IN THE PLANS.



\* SEE STANDARD CURVED END BLOCK AND GUARDRAIL ANCHORAGE SHEET FOR LOCATION OF 'C' BARS, GUARDRAIL INSERT ASSEMBLY AND GUARDRAIL ANCHORAGE LOCATION.



**PROJECT No. 8.1451904**  
**ORANGE-DURHAM COUNTY**  
**STATION: 775+36.88 -L-Med.**

STATE OF NORTH CAROLINA  
**DEPARTMENT OF TRANSPORTATION**  
RALEIGH

**SUPERSTRUCTURE**  
**BARRIER RAIL**

REVISIONS					SHEET NO.
NO.	BY	DATE	NO.	BY	DATE
1			1		
TOTAL SHEET					101