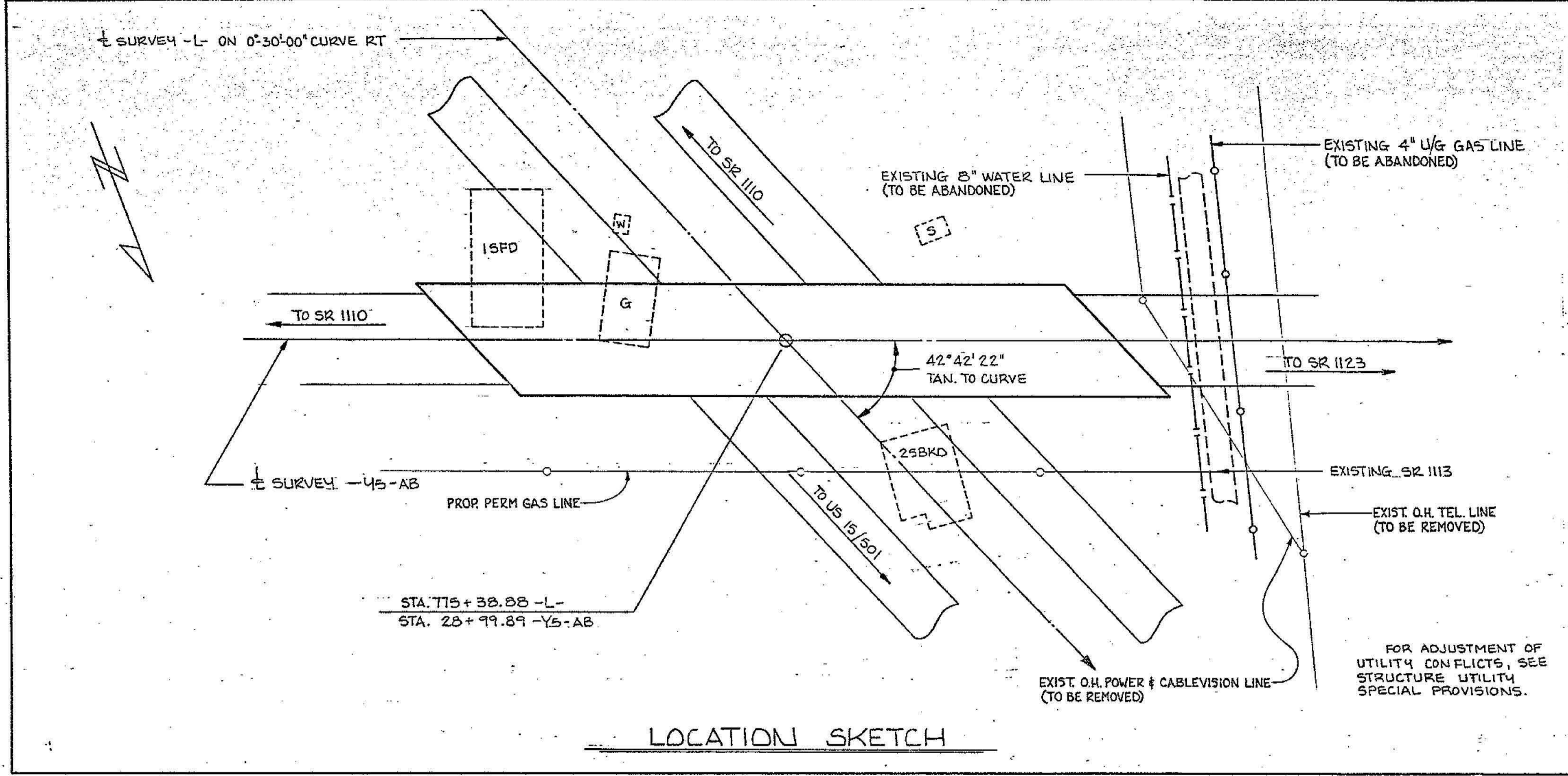


BENCHMARK: NO.7 P/R SPIKE IN BASE OF 10" PINE 215' LT. -L- STA. 774+10 ELEV. 334.09 M.S.L.



I hereby certify that this structure was built according to plans except as noted herein
P.M. Watts
 RESIDENT ENGINEER

FOR INFORMATION ONLY

DRAWING C20 OF 24

TOTAL BILL OF MATERIAL

	FOUNDATION EXCAVATION	REINFORCED CONCRETE DECK SLAB	CLASS A CONCRETE	REINFORCING STEEL	SPIRAL COLUMN REINFORCING STEEL	STRUCTURAL STEEL	HP 12x53 STEEL PILES	CONCRETE BARRIER RAIL	LINSEED OIL CONCRETE PROTECTION	BRIDGE APPROACH SLABS	TFE EXPANSION BEARING ASSEMBLIES	4" SLOPE PROTECTION	EXPANSION JOINT SEAL	PREFORMED COMPRESSION JOINT SEAL
	CU. YDS.	SQ. FT.	CU. YDS.	LBS.	LBS.	APPROX. LBS.	NO. LIN. FT.	LIN. FT.	GALS.	LUMP SUM	LUMP SUM	SQ. YDS.	LUMP SUM	LUMP SUM
SUPERSTRUCTURE		8,654				354,000		507.55669	22		LUMP SUM		LUMP SUM	
END BENT NO.1			27.1	4,446			13				LUMP SUM	240 217.19		LUMP SUM
BENT NO.1	220 195.3		71.7	12,488	1,438									
END BENT NO.2			28.5	4,707			13				LUMP SUM	210 208.96		LUMP SUM
CURVED END BLOCK			2.9	632										
TOTAL	220 195.3	8,654	130.2	22,273	1,438	354,000	26	507.55669	22		LUMP SUM	450 426.15	LUMP SUM	LUMP SUM

PROJECT No. 8.1457904
 ORANGE - DURHAM COUNTY
 STATION: 775+38.88 -L- Med. 28+99.89 -Y-5AB
 SHEET 2 OF 2

STATE OF NORTH CAROLINA
 DEPARTMENT OF TRANSPORTATION
 RALEIGH
 GENERAL DRAWING FOR BRIDGE ON SR 222D OVER I-40 BETWEEN SR 1110 AND SR 1123

REVISIONS						SHEET NO. 275
NO.	BY	DATE	NO.	BY	DATE	
1			2			TOTAL SHEET 101
2			4			