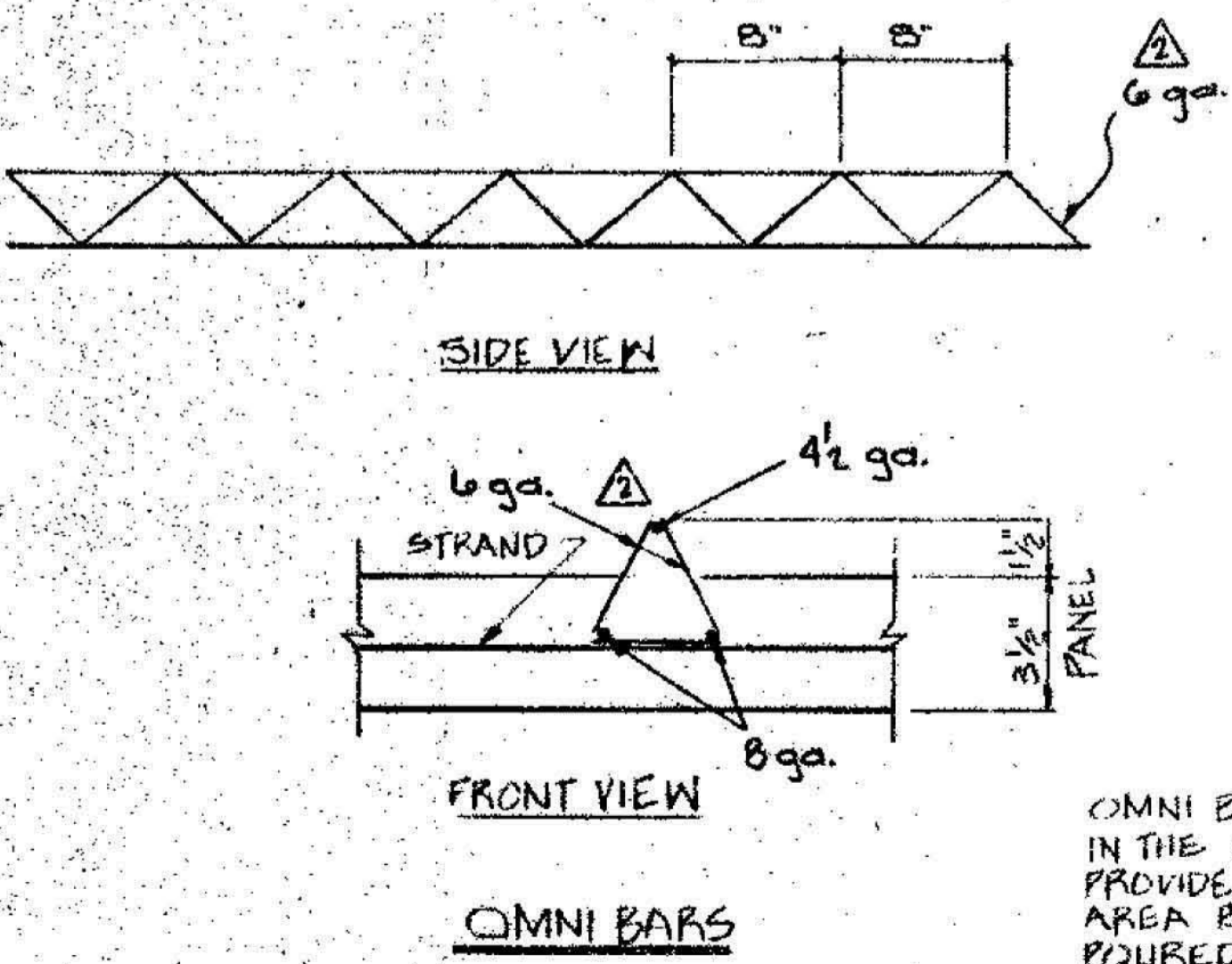
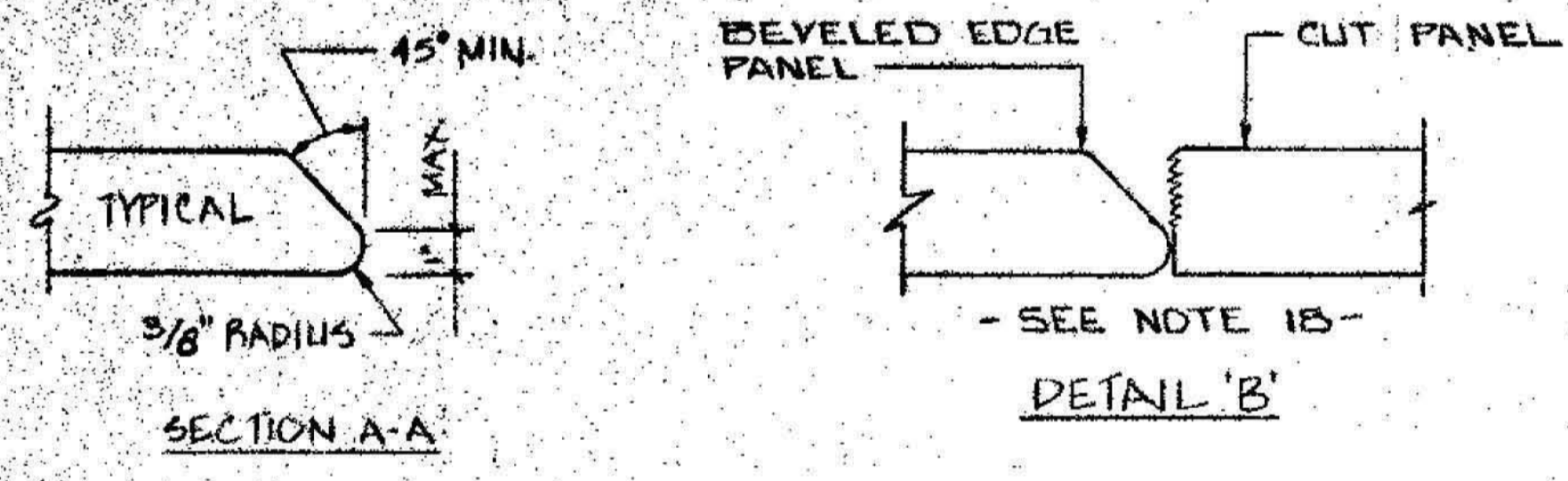
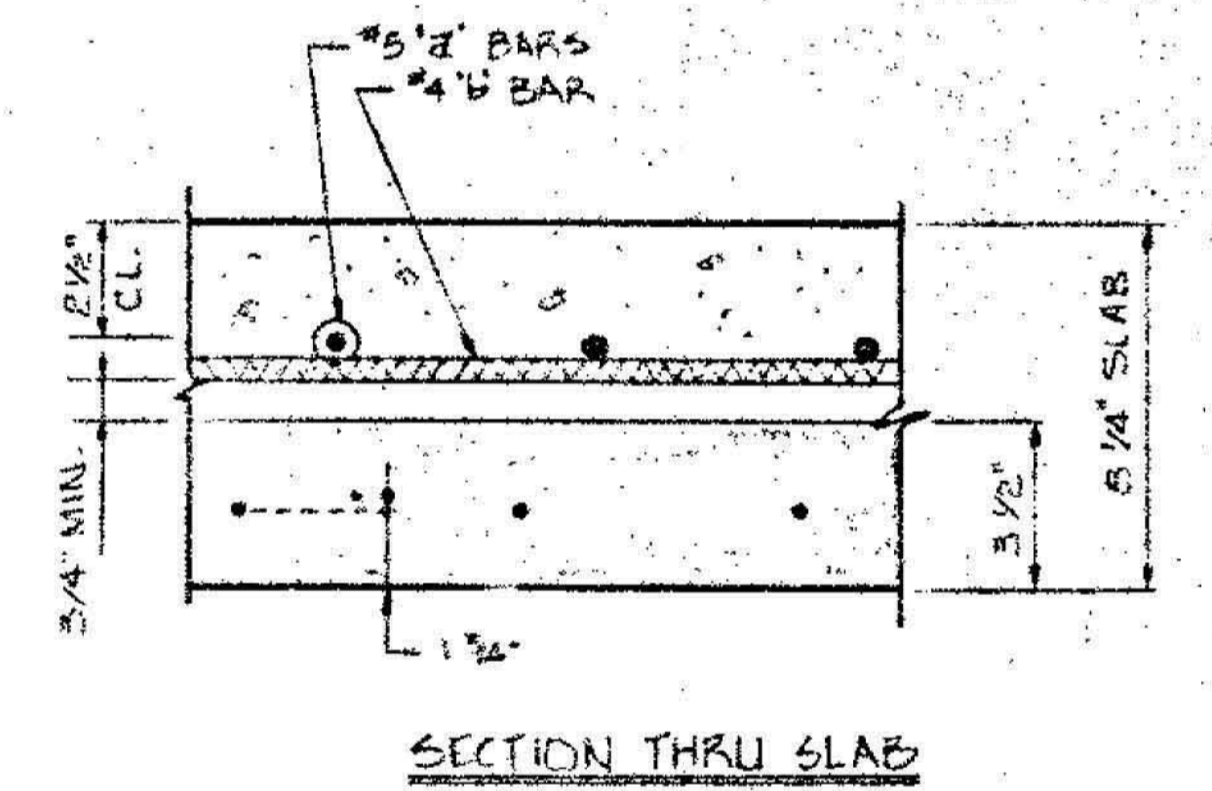
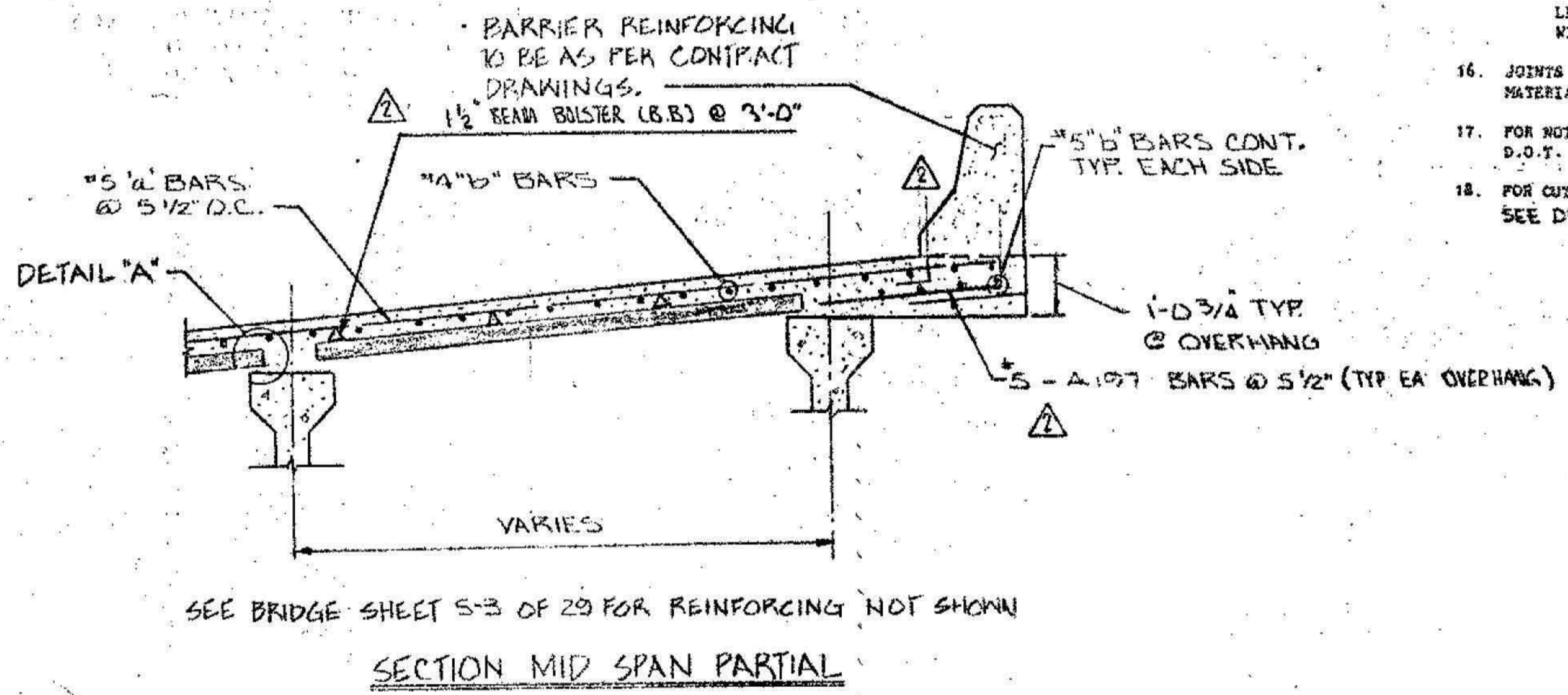
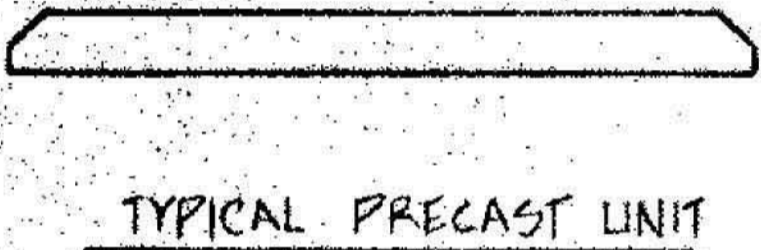
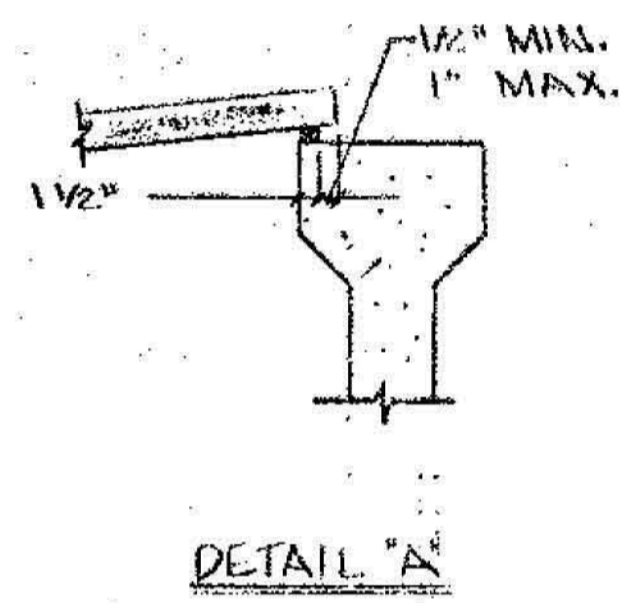
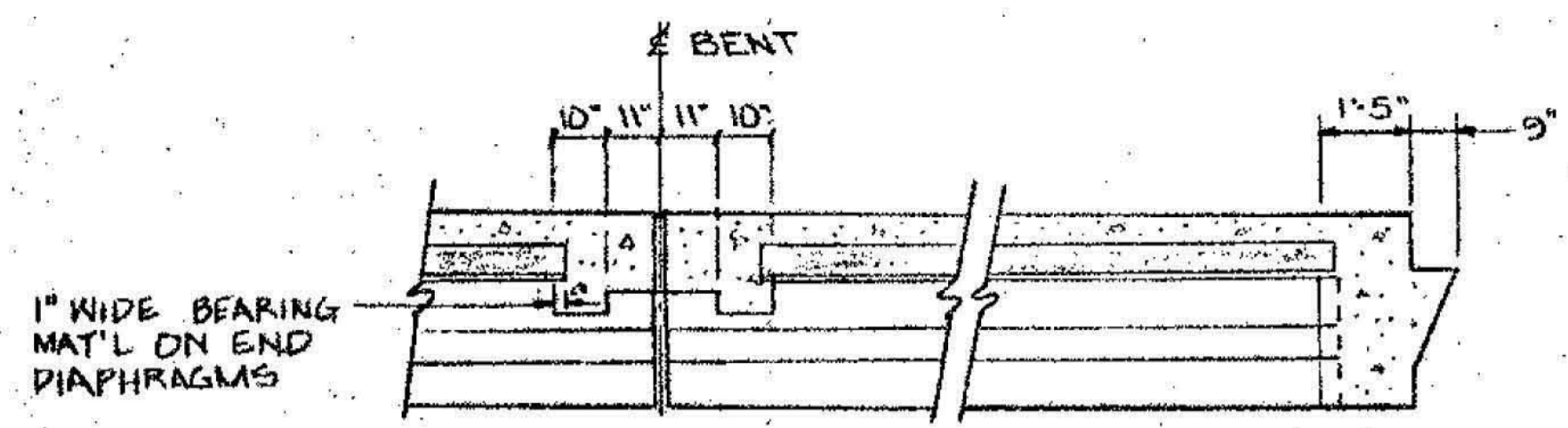
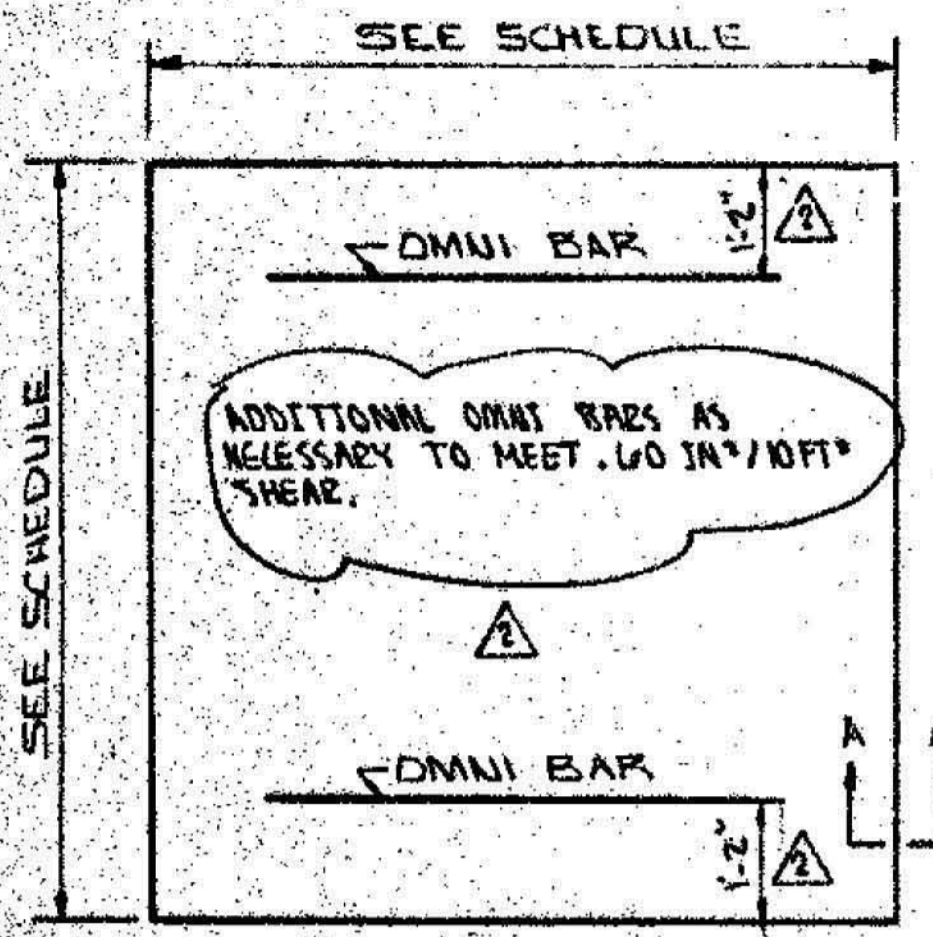


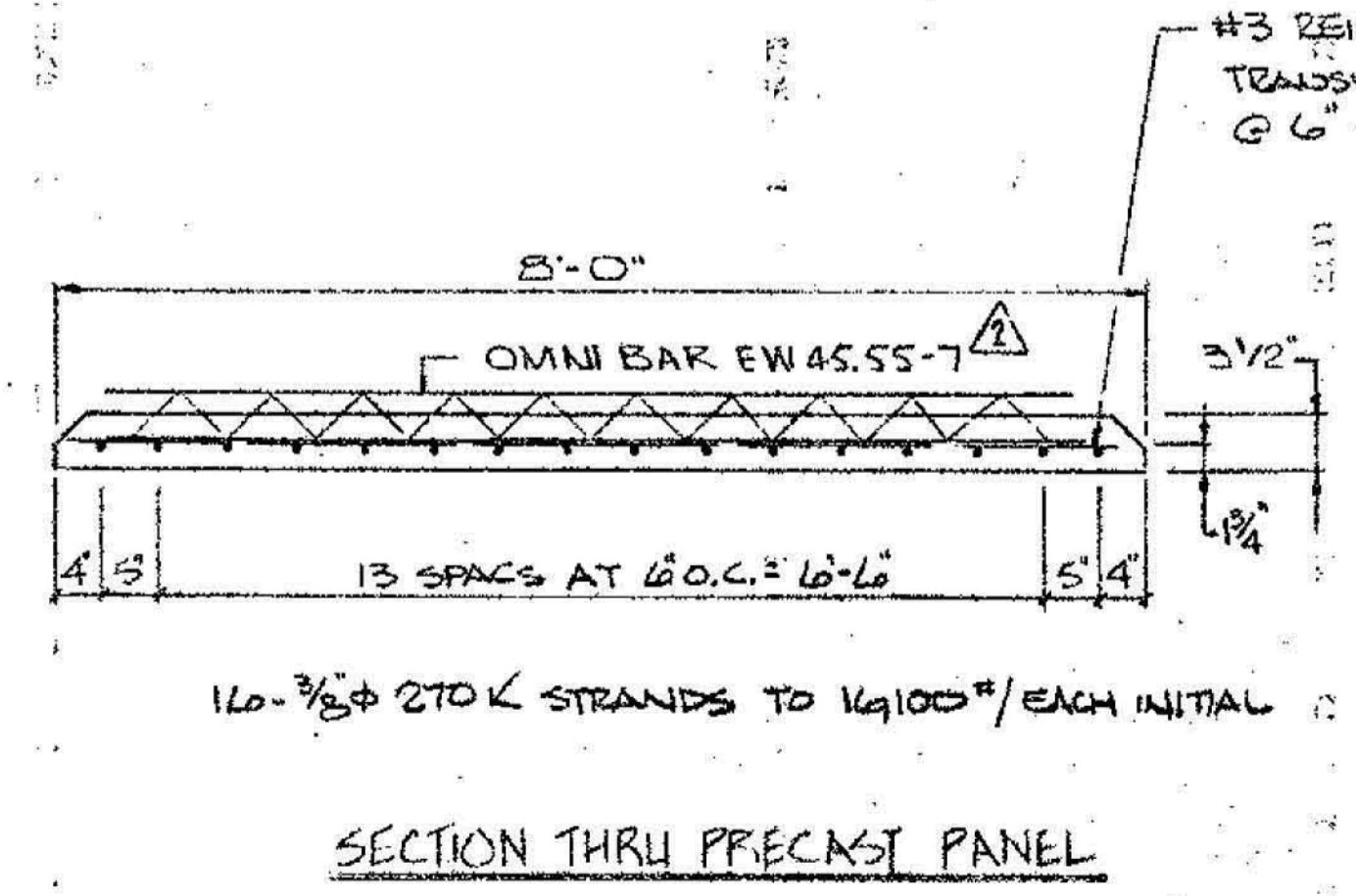
GENERAL NOTES

1. THE TOP SURFACE OF ALL PANELS SHALL BE RAKED MAKING DEPRESSIONS OF APPROXIMATELY 1/4".
2. QUANTITY OF DECK CONCRETE AND REINFORCING STEEL PAID FOR SHALL BE PLAN QUANTITY.
3. BEARING MATERIAL SHALL BE 1/2" THICK x 1 1/2" MIN. - 2 MAX WIDTH BITUMINOUS TYPE MATERIAL MEETING THE REQUIREMENTS OF ASTM D 1173.
4. ALL MATERIAL SHALL CONFORM WITH PROJECT SPECIFICATIONS.
5. BEARING MATERIAL SHALL HAVE A MAXIMUM THICKNESS OF 3" OR A MINIMUM OF 1".
6. MEMBRANE CURING COMPOUND WILL NOT BE USED ON THE TOP OF THE PRECAST PRESTRESSED COMPOSITE BRIDGE DECK UNITS.
7. NARROW UNITS THAT ARE LESS THAN 8'-0" IN WIDTH ARE A PROPORTION OF THE 8'-0" NOMINAL UNIT AND MAY BE CUT.
8. IF SAW CUT FALLS WITHIN STRAND AREA, STRAND WILL BE CHIPPED OUT AND REMOVED.
9. ALL CAST-IN-PLACE CONCRETE SHALL HAVE A MINIMUM 28 DAY COMPRESSIVE STRENGTH AS SHOWN ON PLANS.
10. ALL PRECAST PRESTRESSED UNITS SHALL HAVE A MINIMUM 28 DAY COMPRESSIVE STRENGTH OF 5,000 P.S.I. AND A MINIMUM RELEASE COMPRESSIVE STRENGTH OF 4,000 P.S.I.
11. TOLERANCE FOR PRECAST PRESTRESSED PANELS:  
 DEPTH NOMINAL (THICKNESS IN CASE OF PANELS) (0 to +3/8")  
 POSITION OF STRAND ±1/8" VERTICAL  
 ±1/2" HORIZONTAL  
 MEASURED FROM BOTTOM OF PANEL
12. 1/2" BEARING AREA FOR SLABS ON TOP OF BEAMS SHALL BE SMOOTH.
13. TOPS OF BEAMS SHALL BE CLEAN AND FREE OF LANTANCE BEFORE POURING SLAB.
14. ON HALF PANELS, HOLD DISTRIBUTION STEEL BACK A MINIMUM OF 1" CL. FROM EDGE OF CUT.
15. TOLERANCES FOR PRESTRESSED UNITS:  
 LENGTH OF UNIT PARALLEL TO STRANDS -1" to +1"  
 WIDTH OF CUT UNIT PERPENDICULAR TO STRANDS -1/8" to +1"
16. JOINTS BETWEEN ADJACENT PRECAST UNITS SHALL BE SEALED W/TAPE, GROUT OR OTHER APPROVED MATERIALS.
17. FOR NOTES NOT SHOWN: SEE SPECIAL PROVISIONS FOR PRESTRESSED CONCRETE DECK PANELS BY D.O.T.
18. FOR CUT PIECES: SQUARE EDGE SHALL BE ADJACENT TO REVELLED EDGE OF ADJACENT PIECE. SEE DETAIL "B"

NOTE: FOR REINFORCEMENT IN EDGE BEAMS SEE BRIDGE SHEET 5-4 OF 23.



OMNI BARS SHALL BE PLACED IN THE PRESTRESSED PANELS TO PROVIDE .60 IN<sup>2</sup>/10FT<sup>2</sup> SHEAR AREA BETWEEN PRECAST AND POURED-IN-PLACE PORTION OF SLAB.



NOTE: THIS STRAND PATTERN IS FOR HS-20-44 LOADING AS PER CONTRACT DRAWINGS. MORE STRANDS MAY BE ADDED AT THE PRODUCER'S OPTION, PROVIDED THEY ARE SYMMETRICALLY SPACED. THE MAXIMUM NUMBER OF STRANDS PERMITTED SHALL BE 16 ALL STRANDS SHALL BE #270 K AND STRESSED TO 16100 # / EACH INITIAL.

FOR INFORMATION ONLY

DRAWING C17 OF 24



TEMPORARY T-581 (NORTH CAROLINA)

REVISION 0-17-83 GARY CONCRETE 35 REVISION NOTE # 3 E-30-83 DIT	CONTRACTOR: SANDFORD CONST.	
	GARY CONCRETE PRODUCTS CO.	
	AUGUSTA	ATLANTA SAVANNAH
	PRECAST PANEL DETAILS BRIDGE OVER NEW HOPE CK., ON S.R. 2220 DURHAM CO. N.C. PROJ. NO. 8-2522503	
	DESIGNED: JEL	DATE: AUG. 19. 83
DRAWN: R.H.	SHEET: 5-10-B	
CHECKED: JEL	TOTAL SHEETS: 23	
SHEET 2 OF 3		