

## LOAD AND RESISTANCE FACTOR RATING (LRFR) SUMMARY FOR REINFORCED CONCRETE BOX CULVERTS

LEVEL	VEHICLE	WEIGHT (W) (TONS)	CONTROLLING LOAD RATING #	MINIMUM RATING FACTORS (RF)	TONS = W x RF	STRENGTH I LIMIT STATE								COMMENT NUMBER		
						LIVE-LOAD FACTORS (LL)	MOMENT				SHEAR					
							RATING FACTOR	BOX NO.	ELEMENT TYPE	DISTANCE FROM LEFT END OF ELEMENT (FT)	RATING FACTOR	BOX NO.	ELEMENT TYPE		DISTANCE FROM LEFT END OF ELEMENT (FT)	
DESIGN LOAD RATING	HL-93 (INVENTORY)	N/A	①	1.53	--	1.75	1.77	1	TOP SLAB	6.00	1.53	1	TOP SLAB	10.67		
	HL-93 (OPERATING)	N/A		1.98	--	1.35	2.29	1	TOP SLAB	6.00	1.98	1	TOP SLAB	10.67		
	HS-20 (INVENTORY)	36.000	②	1.72	61.92	1.75	1.90	1	TOP SLAB	6.00	1.72	1	TOP SLAB	10.67		
	HS-20 (OPERATING)	36.000		2.23	80.28	1.35	2.46	1	TOP SLAB	6.00	2.23	1	TOP SLAB	10.67		
LEGAL LOAD RATING	SINGLE VEHICLE (SV)	SNSH		3.45	46.58	1.40	3.45	1	TOP SLAB	6.00	3.61	1	TOP SLAB	10.67		
		SNGARBS2	20.000		3.23	64.60	1.40	3.23	1	TOP SLAB	6.00	3.30	1	TOP SLAB	10.67	
		SNAGRIS2	22.000		3.45	75.90	1.40	3.45	1	TOP SLAB	6.00	3.60	1	TOP SLAB	10.67	
		SNCOTTS3	27.250	③	1.58	43.06	1.40	2.56	1	TOP SLAB	6.00	1.58	1	TOP SLAB	10.67	
		SNAGGRS4	34.925		2.18	76.14	1.40	2.63	1	BOTTOM SLAB	6.00	2.18	1	TOP SLAB	10.67	
		SNS5A	35.550		1.95	69.32	1.40	2.56	1	BOTTOM SLAB	6.00	1.95	1	TOP SLAB	10.67	
		SNS6A	39.950		1.97	78.70	1.40	2.58	1	BOTTOM SLAB	6.00	1.97	1	TOP SLAB	10.67	
	TRUCK TRACTOR SEMI-TRAILER (TTS1)	TNAGRIT3	33.000		3.01	99.33	1.40	3.01	1	BOTTOM SLAB	6.00	3.25	1	TOP SLAB	10.67	
		TNT4A	33.075		2.04	67.47	1.40	3.04	1	TOP SLAB	6.00	2.04	1	TOP SLAB	10.67	
		TNT6A	41.600		1.98	82.37	1.40	2.92	1	BOTTOM SLAB	6.00	1.98	1	TOP SLAB	10.67	
		TNT7A	42.000		2.00	84.00	1.40	2.73	1	BOTTOM SLAB	6.00	2.00	1	TOP SLAB	10.67	
		TNT7B	42.000		1.93	81.06	1.40	2.31	1	BOTTOM SLAB	6.00	1.93	1	TOP SLAB	10.67	
		TNAGRIT4	43.000		1.95	83.85	1.40	2.58	1	BOTTOM SLAB	6.00	1.95	1	TOP SLAB	10.67	
		TNAGT5A	45.000		2.04	91.80	1.40	2.58	1	BOTTOM SLAB	6.00	2.04	1	TOP SLAB	10.67	
TNAGT5B	45.000		1.95	87.75	1.40	2.64	1	BOTTOM SLAB	6.00	1.95	1	TOP SLAB	10.67			

**LOAD FACTORS:**

DESIGN LOAD RATING FACTORS

LOAD TYPE	MAX FACTOR	MIN FACTOR
DC	1.25	0.90
DW	1.50	0.65
EV	1.30	0.90
EH	1.35	0.90
ES	1.35	0.90
LS	1.75	--
WA	1.00	--

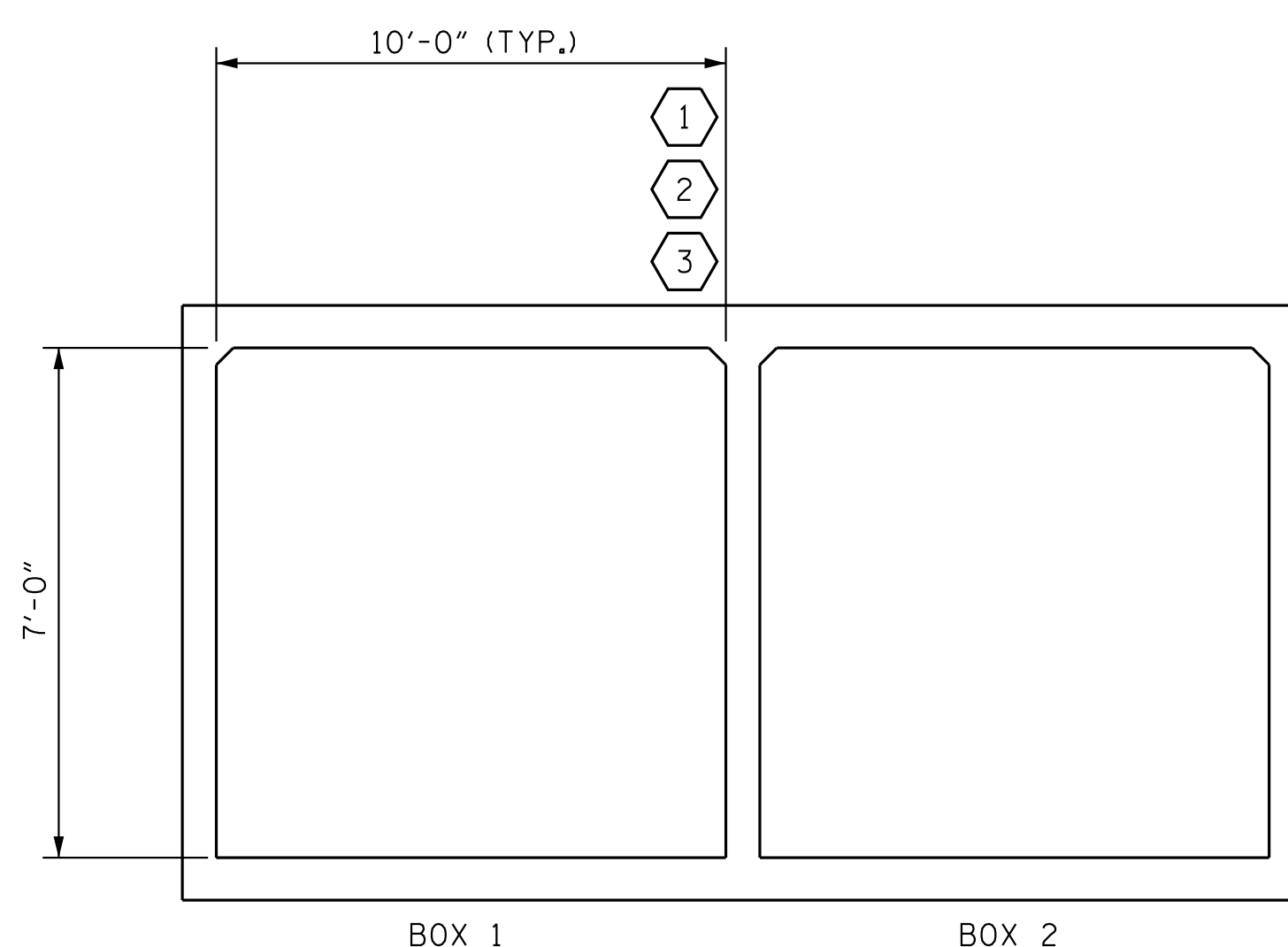
**NOTE:**

RATING FACTORS ARE BASED ON THE STRENGTH I LIMIT STATE.

**COMMENTS:**

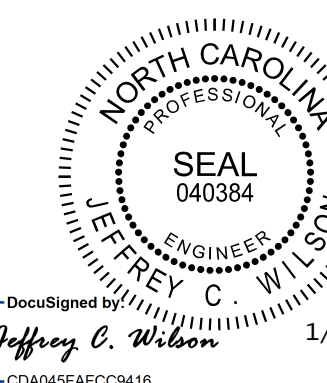
- 1.
- 2.
- 3.
- 4.

#	CONTROLLING LOAD RATING
①	DESIGN LOAD RATING (HL-93)
②	DESIGN LOAD RATING (HS-20)
③	LEGAL LOAD RATING **
	** SEE CHART FOR VEHICLE TYPE



**LRFR SUMMARY**  
(LOOKING DOWNSTREAM)

PROJECT NO. EB-4707B  
DURHAM COUNTY  
 STATION: 105+70.00 -L-



STATE OF NORTH CAROLINA  
 DEPARTMENT OF TRANSPORTATION  
 RALEIGH  
 STANDARD  
**LRFR SUMMARY FOR  
 REINFORCED CONCRETE  
 BOX CULVERTS**  
 (NON-INTERSTATE TRAFFIC)

**Kimley»Horn**

421 Fayetteville Street, Suite 600  
 Raleigh, NC 27601-1772  
 Phone (919) 677-2000  
 NC LICENSE # F-0102

This document, together with the concepts and designs presented herein, is an instrument of service, is intended only for the specific purpose and client for which it was prepared. Reuse of and Engineer reliance of this document without written authorization and approval by Kimley-Horn and Associates, Inc. shall be without liability to Kimley-Horn and Associates, Inc.  
 Copyright Kimley-Horn and Associates, Inc., 2017

REVISIONS						SHEET NO.
NO.	BY	DATE	NO.	BY	DATE	TOTAL SHEETS
1			3			24
2			4			