

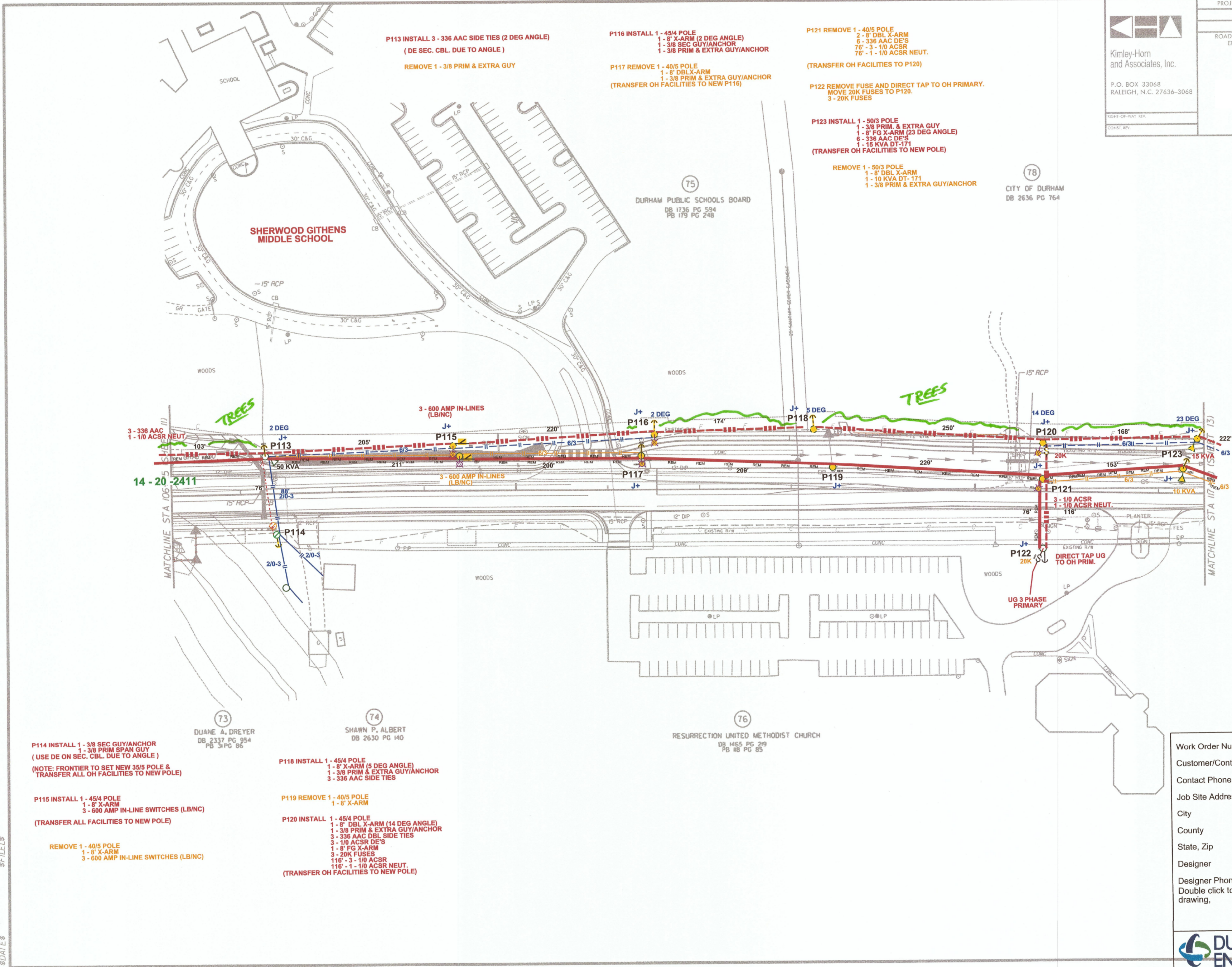
USP: Enter Up Stream Protection, Location, Device Type, and Facility ID of the Blocking Device
 WZS: Remember "Your Circle of Safety"



P.O. BOX 33068
 RALEIGH, N.C. 27636-3068

RIGHT-OF-WAY REV.
 CONS: REV.

PROJECT REFERENCE NO. EB-4707	SHEET NO. 12
R/W SHEET NO.	HYDRAULICS ENGINEER
ROADWAY DESIGN ENGINEER	



P114 INSTALL 1 - 3/8 SEC GUY/ANCHOR
 1 - 3/8 PRIM SPAN GUY
 (USE DE ON SEC. CBL. DUE TO ANGLE)
 (NOTE: FRONTIER TO SET NEW 35/5 POLE &
 TRANSFER ALL OH FACILITIES TO NEW POLE)

P115 INSTALL 1 - 45/4 POLE
 1 - 8' X-ARM
 3 - 600 AMP IN-LINE SWITCHES (LB/NC)
 (TRANSFER ALL FACILITIES TO NEW POLE)

REMOVE 1 - 40/5 POLE
 1 - 8' X-ARM
 3 - 600 AMP IN-LINE SWITCHES (LB/NC)

P118 INSTALL 1 - 45/4 POLE
 1 - 8' X-ARM (5 DEG ANGLE)
 1 - 3/8 PRIM & EXTRA GUY/ANCHOR
 3 - 336 AAC SIDE TIES

P119 REMOVE 1 - 40/5 POLE
 1 - 8' X-ARM

P120 INSTALL 1 - 45/4 POLE
 1 - 8' DBL X-ARM (14 DEG ANGLE)
 1 - 3/8 PRIM & EXTRA GUY/ANCHOR
 3 - 336 AAC DBL SIDE TIES
 3 - 1/0 ACSR DIES
 1 - 8' FG X-ARM
 3 - 20K FUSES
 116' - 3 - 1/0 ACSR
 116' - 1 - 1/0 ACSR NEUT.
 (TRANSFER OH FACILITIES TO NEW POLE)

P113 INSTALL 3 - 336 AAC SIDE TIES (2 DEG ANGLE)
 (DE SEC. CBL. DUE TO ANGLE)
 REMOVE 1 - 3/8 PRIM & EXTRA GUY

P116 INSTALL 1 - 45/4 POLE
 1 - 8' X-ARM (2 DEG ANGLE)
 1 - 3/8 SEC GUY/ANCHOR
 1 - 3/8 PRIM & EXTRA GUY/ANCHOR
P117 REMOVE 1 - 40/5 POLE
 1 - 8' DBL X-ARM
 1 - 3/8 PRIM & EXTRA GUY/ANCHOR
 (TRANSFER OH FACILITIES TO NEW P116)

P121 REMOVE 1 - 40/5 POLE
 2 - 8' DBL X-ARM
 6 - 336 AAC DE'S
 76' - 3 - 1/0 ACSR
 76' - 1 - 1/0 ACSR NEUT.
 (TRANSFER OH FACILITIES TO P120)

P122 REMOVE FUSE AND DIRECT TAP TO OH PRIMARY.
 MOVE 20K FUSES TO P120.
 3 - 20K FUSES

P123 INSTALL 1 - 50/3 POLE
 1 - 3/8 PRIM & EXTRA GUY
 1 - 8' FG X-ARM (23 DEG ANGLE)
 6 - 336 AAC DE'S
 1 - 15 KVA DT-171
 (TRANSFER OH FACILITIES TO NEW POLE)

REMOVE 1 - 50/3 POLE
 1 - 8' DBL X-ARM
 1 - 10 KVA DT-171
 1 - 3/8 PRIM & EXTRA GUY/ANCHOR

Work Order Number	3572607
Customer/Contact	-
Contact Phone	-
Job Site Address	OLD CHAPEL HILL ROAD
City	DURHAM
County	DURHAM
State, Zip	NC, 27707
Designer	Don Daniels
Designer Phone	919 818-3136
Double click to add additional notes and details to drawing.	