

CLEARING AND GRUBBING PHASE.
SEE SHEET EC-21 FOR THE POST GRADING PHASE.

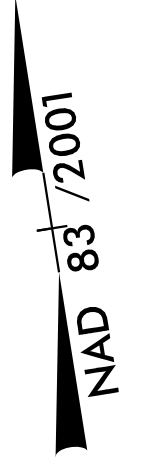
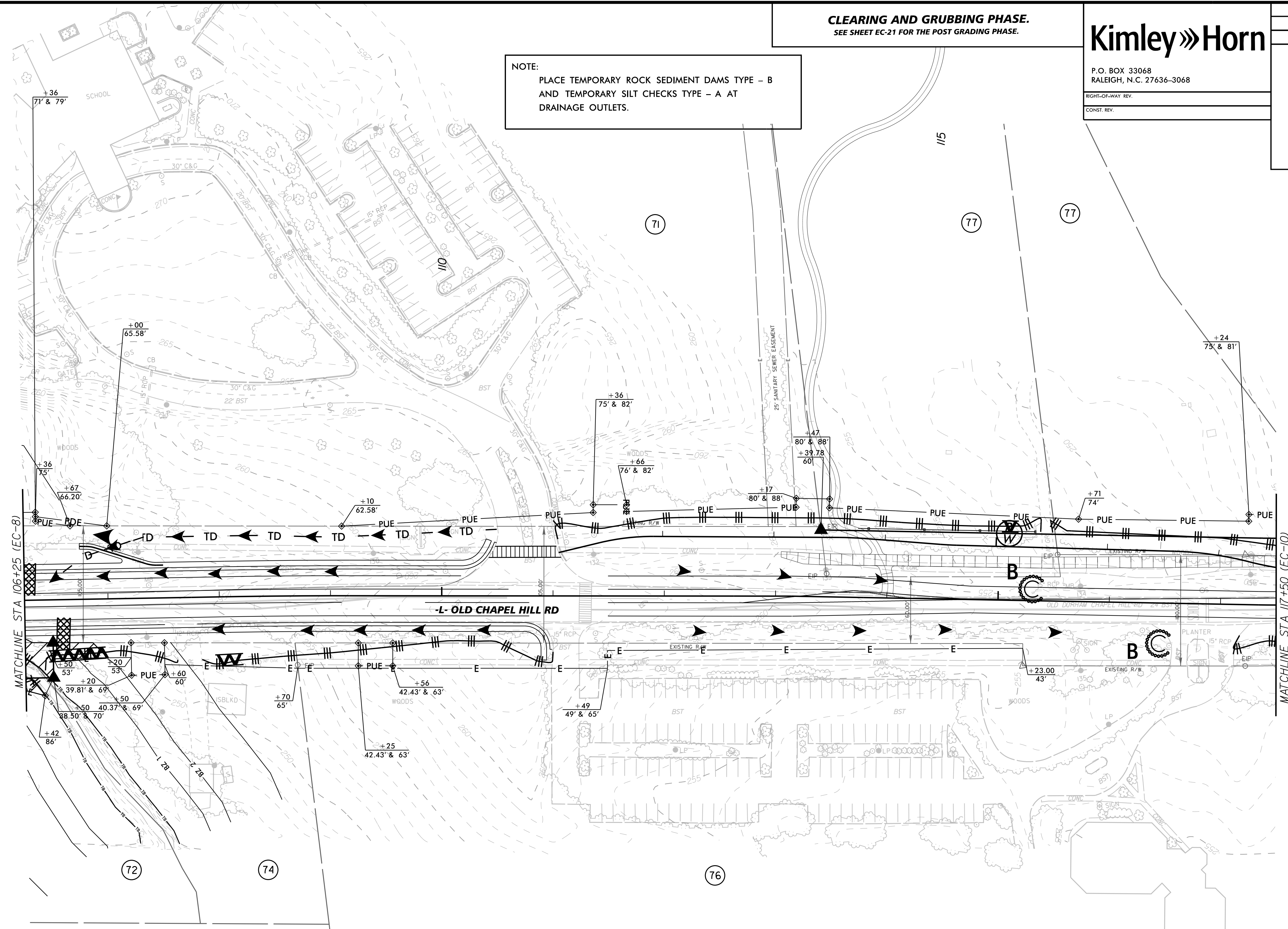
Kimley»Horn

P.O. BOX 33068
RALEIGH, N.C. 27636-3068

RIGHT-OF-WAY REV.
CONST. REV.

PROJECT REFERENCE NO. EB-4707B	SHEET NO. EC-9
R/W SHEET NO. 12	

NOTE:
PLACE TEMPORARY ROCK SEDIMENT DAMS TYPE - B
AND TEMPORARY SILT CHECKS TYPE - A AT
DRAINAGE OUTLETS.



NOTES: IN LOCATIONS WHERE DRAINAGE STRUCTURES REQUIRE PROTECTION BUT ASPHALT AND CURB PROHIBIT TRADITIONAL BMP OF ROCK INLET SEDIMENT TRAP TYPE C, INLET TUBES "SILT SOCK" AND FILTER SACK INLET PROTECTION MAY BE USED INSTEAD. SEE DETAILS SHEET EC-31 AND INSTALL AS DIRECTED BY FIELD ENGINEER.

NOTES: ANY DEVIATION FROM OPTIONS GIVEN WILL REQUIRE PRIOR APPROVAL BY ENGINEER.

ADDITIONAL EROSION CONTROL DEVICES MAY NEED TO BE INSTALLED AS DIRECTED BY THE ENGINEER.



Std. #	Description	Symbol	Std. #	Description	Symbol
1605.01	Temporary Silt Fence		1633.01	Temporary Rock Silt Check Type-A	⊗
1606.01	Special Sediment Control Fence	⚡		Temporary Rock Silt Check Type-A with Matting and Polyacrylamide (PAM)	⊗
1630.02	Silt Basin Type B	▨	1633.02	Temporary Rock Silt Check Type-B	➔
1630.03	Temporary Silt Ditch	TD		Wattle	⌒
1630.05	Temporary Diversion	TD		Wattle with Polyacrylamide (PAM)	⌒
1630.06	Special Stilling Basin		1634.02	Temporary Rock Sediment Dam Type-B	▣
1632.03	Rock Inlet Sediment Trap Type C	⊠	1635.01	Rock Pipe Inlet Sediment Trap Type-B	⊕
	Skimmer Basin	⊠			
	Earthen Dam with Skimmer	⊠			

FILE\$

1/25/2017