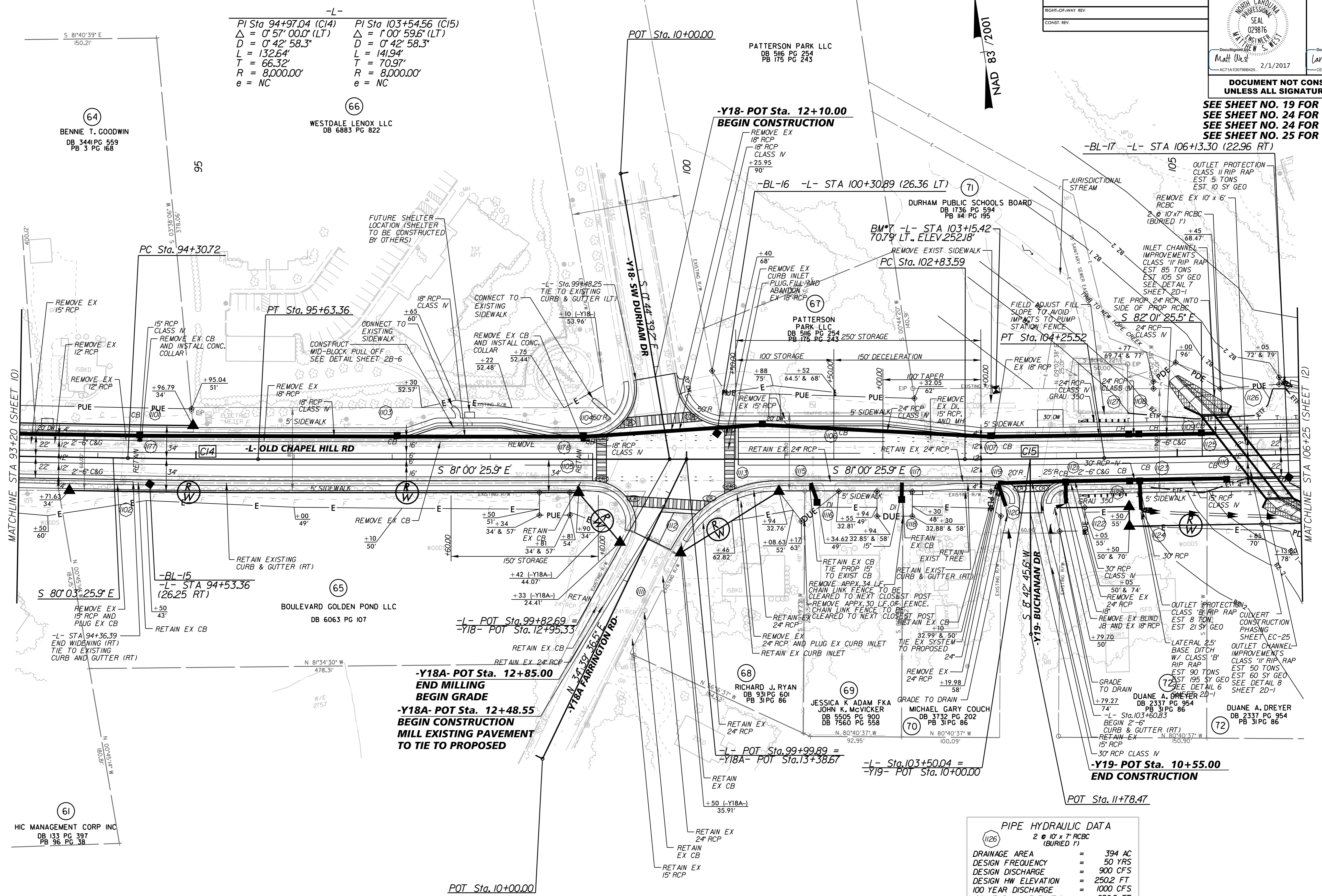


PROJECT REFERENCE NO. EB-4707B	SHEET NO. 11
R/W SHEET NO.	HYDRAULICS ENGINEER
ROADWAY DESIGN ENGINEER	

DOCUMENT NOT CONSIDERED FINAL UNLESS ALL SIGNATURES COMPLETED

SEE SHEET NO. 19 FOR -L- PROFILE
SEE SHEET NO. 24 FOR -Y18- PROFILE
SEE SHEET NO. 24 FOR -Y18A- PROFILE
SEE SHEET NO. 25 FOR -Y19- PROFILE



-L-
 PI Sta. 94+97.04 (C14)
 Δ = 0° 57' 00.0" (LT)
 D = 0° 42' 58.3"
 L = 132.64'
 T = 66.32'
 R = 8,000.00'
 e = NC

PI Sta. 103+54.56 (C15)
 Δ = 1° 00' 59.6" (LT)
 D = 0° 42' 58.3"
 L = 141.94'
 T = 70.97'
 R = 8,000.00'
 e = NC

PIPE HYDRAULIC DATA

(1126)
2 @ 10" x 7" RCBC (BURIED 1')

DRAINAGE AREA	=	394 AC
DESIGN FREQUENCY	=	50 YRS
DESIGN DISCHARGE	=	900 CFS
DESIGN HW ELEVATION	=	250.2 FT
100 YEAR DISCHARGE	=	1000 CFS
100 YEAR HW ELEVATION	=	250.8 FT
OVERTOPPING FREQUENCY	=	> 100 YRS
OVERTOPPING DISCHARGE	=	> 1265 CFS
OVERTOPPING ELEVATION	=	252.42 FT

FILE\$
1/30/2017