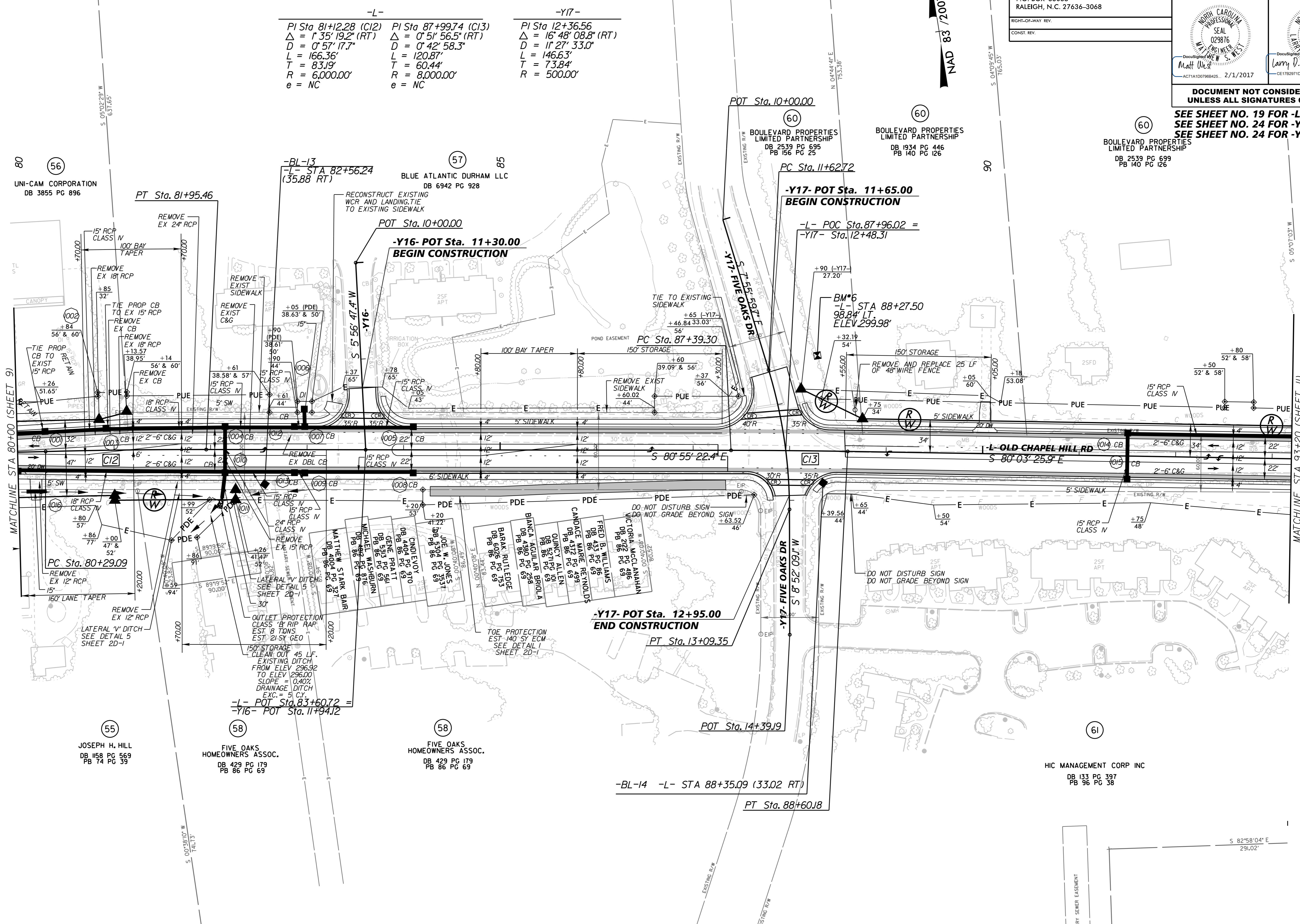


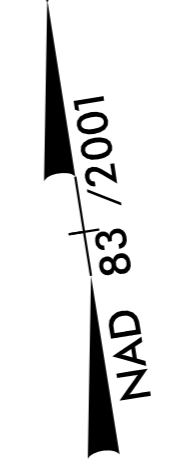
PROJECT REFERENCE NO. EB-4707B	SHEET NO. 10
RW SHEET NO.	
ROADWAY DESIGN ENGINEER	HYDRAULICS ENGINEER
DocuSigned by: Matt Wise, PE ACT1A1D0798B25 2/1/2017	DocuSigned by: Larry D. Robinson, PE CE17B291D0643E 1/30/2017

DOCUMENT NOT CONSIDERED FINAL UNLESS ALL SIGNATURES COMPLETED

**SEE SHEET NO. 19 FOR -L- PROFILE
SEE SHEET NO. 24 FOR -Y16- PROFILE
SEE SHEET NO. 24 FOR -Y17- PROFILE**



-L-	-Y16-	-Y17-
PI Sta 81+12.28 (C12)	PI Sta 87+99.74 (C13)	PI Sta 12+36.56
$\Delta = 1' 35'' 19.2''$ (RT)	$\Delta = 0' 51'' 56.5''$ (RT)	$\Delta = 16' 48'' 08.8''$ (RT)
$D = 0' 57'' 17.7''$	$D = 0' 42'' 58.3''$	$D = 1' 27'' 33.0''$
$L = 166.36'$	$L = 120.87'$	$L = 146.63'$
$T = 83.19'$	$T = 60.44'$	$T = 73.84'$
$R = 6,000.00'$	$R = 8,000.00'$	$R = 500.00'$
$e = NC$	$e = NC$	



80 (56)
UNI-CAM CORPORATION
DB 3855 PG 896

85 (57)
BLUE ATLANTIC DURHAM LLC
DB 6942 PG 928

90 (60)
BOULEVARD PROPERTIES LIMITED PARTNERSHIP
DB 1934 PG 446
PB 140 PG 126

90 (60)
BOULEVARD PROPERTIES LIMITED PARTNERSHIP
DB 2539 PG 699
PB 140 PG 126

55
JOSEPH H. HILL
DB 1158 PG 569
PB 74 PG 39

58
FIVE OAKS HOMEOWNERS ASSOC.
DB 429 PG 179
PB 86 PG 69

58
FIVE OAKS HOMEOWNERS ASSOC.
DB 429 PG 179
PB 86 PG 69

61
HIC MANAGEMENT CORP INC
DB 133 PG 397
PB 96 PG 38

1/30/2017 \$ FILE\$