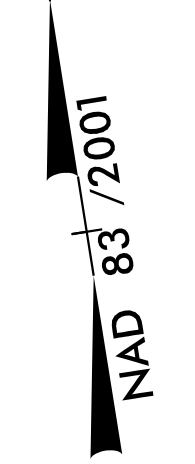
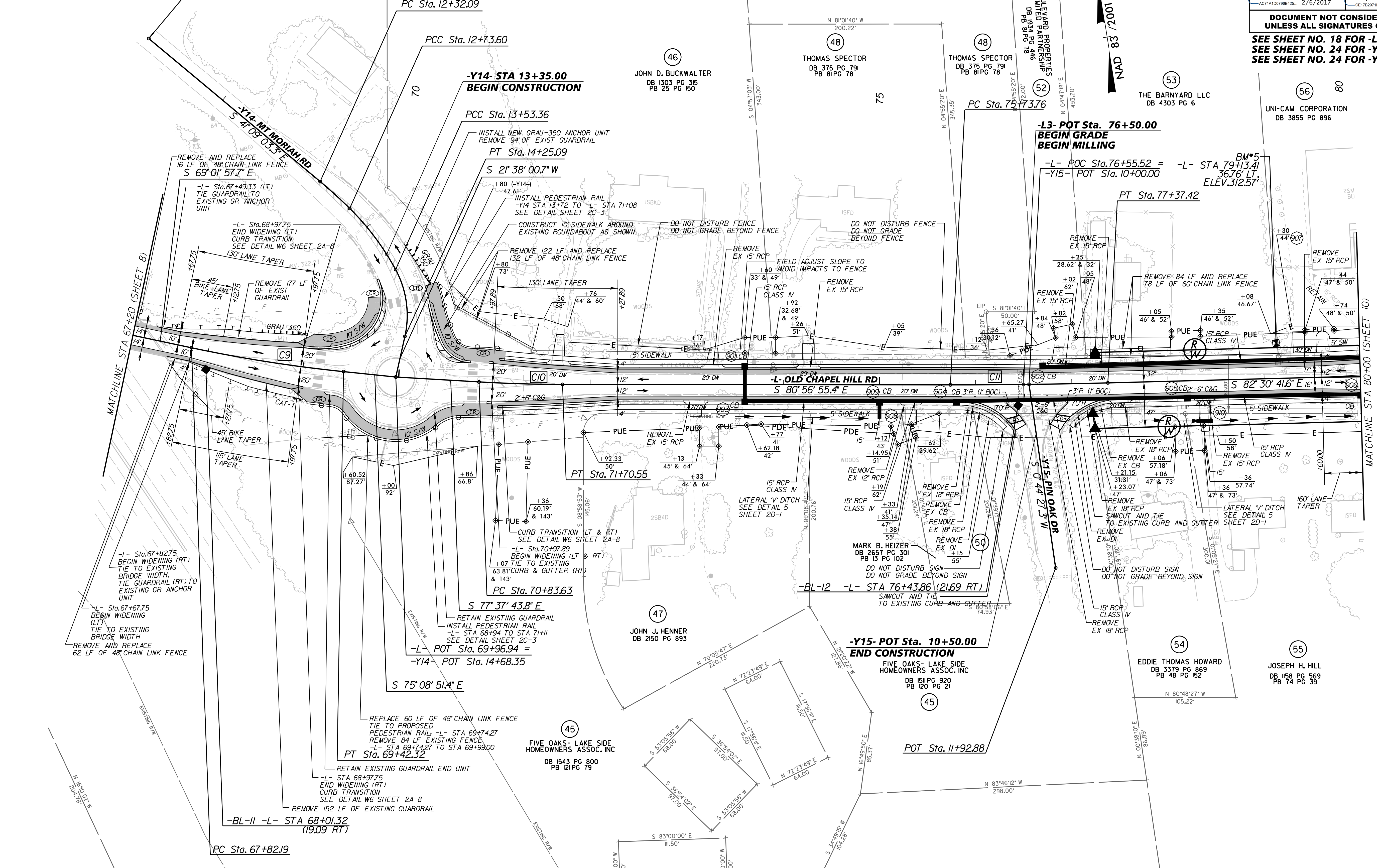


PROJECT REFERENCE NO. EB-4707B	SHEET NO. 9
RW SHEET NO.	
ROADWAY DESIGN ENGINEER	HYDRAULICS ENGINEER
2/6/2017	2/6/2017

DOCUMENT NOT CONSIDERED FINAL UNLESS ALL SIGNATURES COMPLETED

SEE SHEET NO. 18 FOR -L- PROFILE
SEE SHEET NO. 24 FOR -Y14- PROFILE
SEE SHEET NO. 24 FOR -Y15- PROFILE

-L-			-Y14-		
PI Sta 68+62.33 (C9)	PI Sta 71+27.00 (C10)	PI Sta 76+55.59 (C11)	PI Sta 12+52.86	PI Sta 13+13.77	PI Sta 13+90.85
$\Delta = 6^{\circ}06'59.8''$ (LT)	$\Delta = 3^{\circ}19'11.6''$ (LT)	$\Delta = 1^{\circ}33'46.2''$ (LT)	$\Delta = 4^{\circ}45'23.2''$ (RT)	$\Delta = 16^{\circ}55'29.8''$ (RT)	$\Delta = 41^{\circ}06'10.9''$ (RT)
D = 3' 49' 11.0"	D = 3' 49' 11.0"	D = 0' 57' 17.7"	D = 1' 27' 33.0"	D = 2' 13' 14.4"	D = 57' 17' 44.8"
L = 160.13'	L = 86.91'	L = 163.66'	L = 41.51'	L = 79.76'	L = 71.74'
T = 80.14'	T = 43.47'	T = 81.83'	T = 20.77'	T = 40.17'	T = 37.49'
R = 1,500.00'	R = 1,500.00'	R = 6,000.00'	R = 500.00'	R = 270.00'	R = 100.00'
e = MATCH EXIST.	e = MATCH EXIST.	e = NC			



\$ FILE\$
2/16/2017