

PLAN @ END BENT 1
PLAN @ END BENT 2
DIMENSIONS SHOWN ARE TYPICAL FOR BOTH APPROACH SLABS

NOTES

APPROACH SLAB SHALL NOT BE CONSTRUCTED PRIOR TO COMPLETION OF THE BRIDGE DECK.

FOR REINFORCED BRIDGE APPROACH FILL FABRIC WALL INCLUDING GEOTEXTILE, IMPERMEABLE GEOMEMBRANE, 4" Ø DRAINAGE PIPE, #78M STONE, WELDED WIRE FORM, AND SELECT MATERIAL, SEE ROADWAY PLANS.

AREA BETWEEN THE WINGWALL AND APPROACH SLAB SHALL BE GRADED TO DRAIN THE WATER AWAY FROM THE FILL FACE OF THE BRIDGE AND SHALL BE PAVED. SEE ROADWAY PLANS.

THE JOINT OPENING AT THE APPROACH SLAB/DECK INTERFACE SHALL BE SAWED NO MORE THAN 12 HOURS AFTER THE APPROACH SLAB IS CAST. THE JOINT SHALL BE CLEANED OF ALL DEBRIS BEFORE THE SEALANT IS APPLIED. THE JOINT SEALER MATERIAL SHALL CONFORM TO THE REQUIREMENTS OF SECTION 1028-3 OF THE STANDARD SPECIFICATIONS.

BILL OF MATERIAL

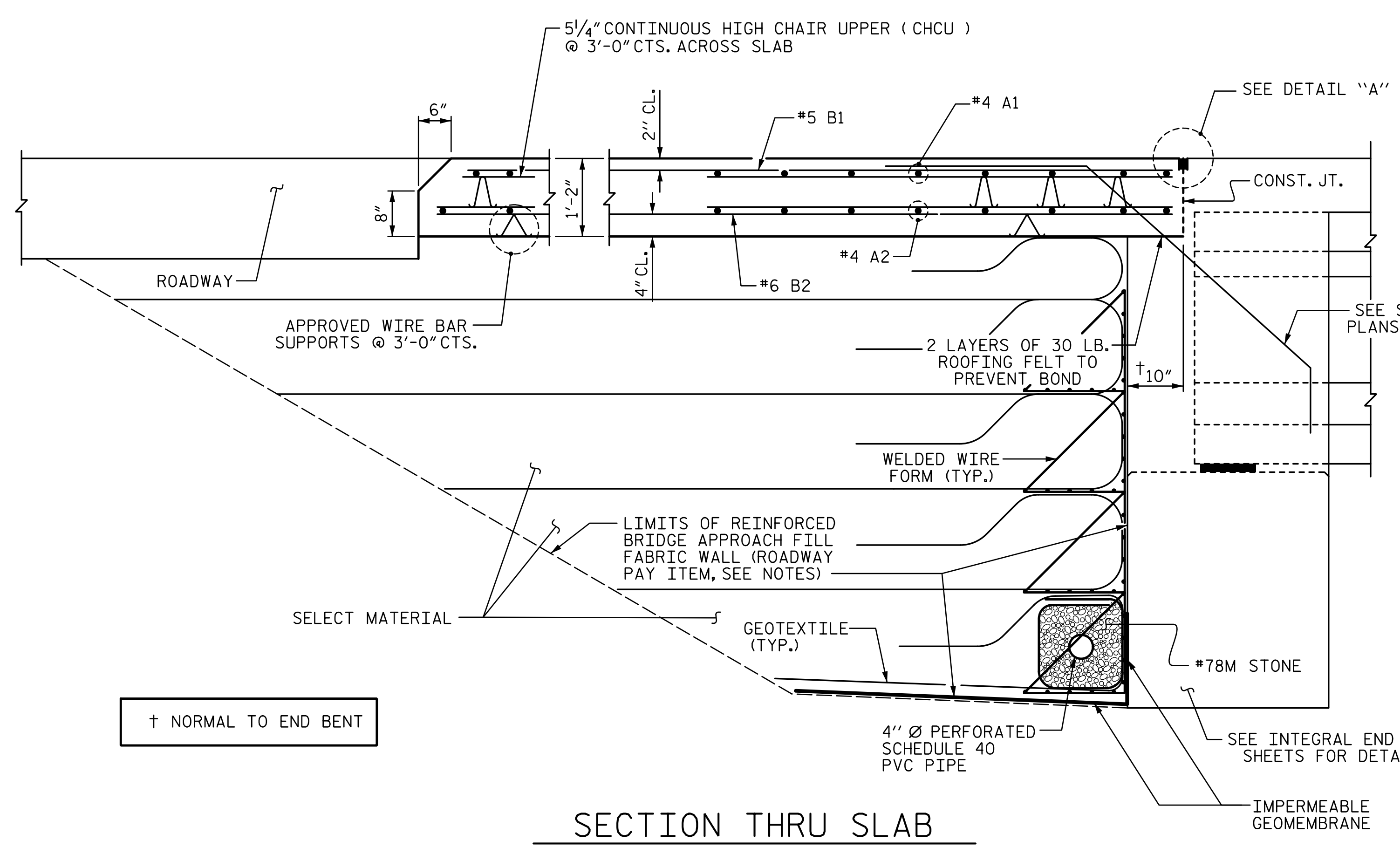
FOR ONE APPROACH SLAB (2 REQ'D)

BAR	NO.	SIZE	TYPE	LENGTH	WEIGHT
* A1	52	#4	STR	21'-6"	747
A2	52	#4	STR	21'-5"	744
* B1	83	#5	STR	24'-1"	2,085
B2	83	#6	STR	24'-7"	3,065
REINFORCING STEEL				LBS.	3,809
* EPOXY COATED REINFORCING STEEL				LBS.	2,832
CLASS AA CONCRETE				C. Y.	44.7

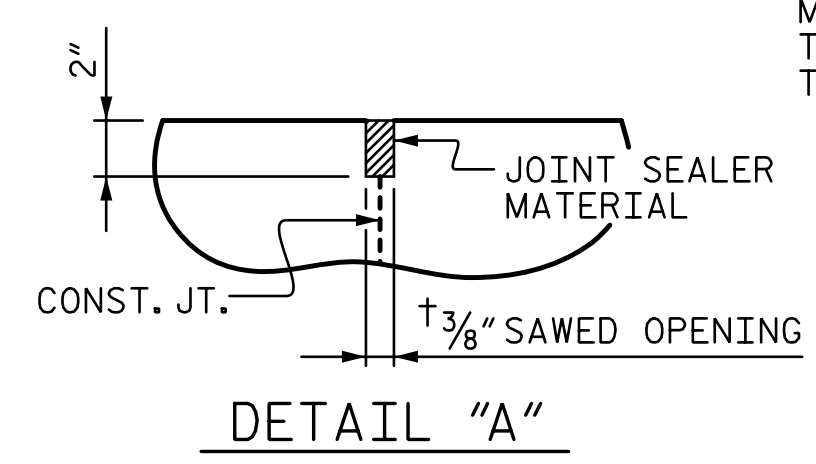
SPLICE CHART

BAR	SIZE	SPLICE
* A1	#4	2'-0"
A2	#4	1'-9"

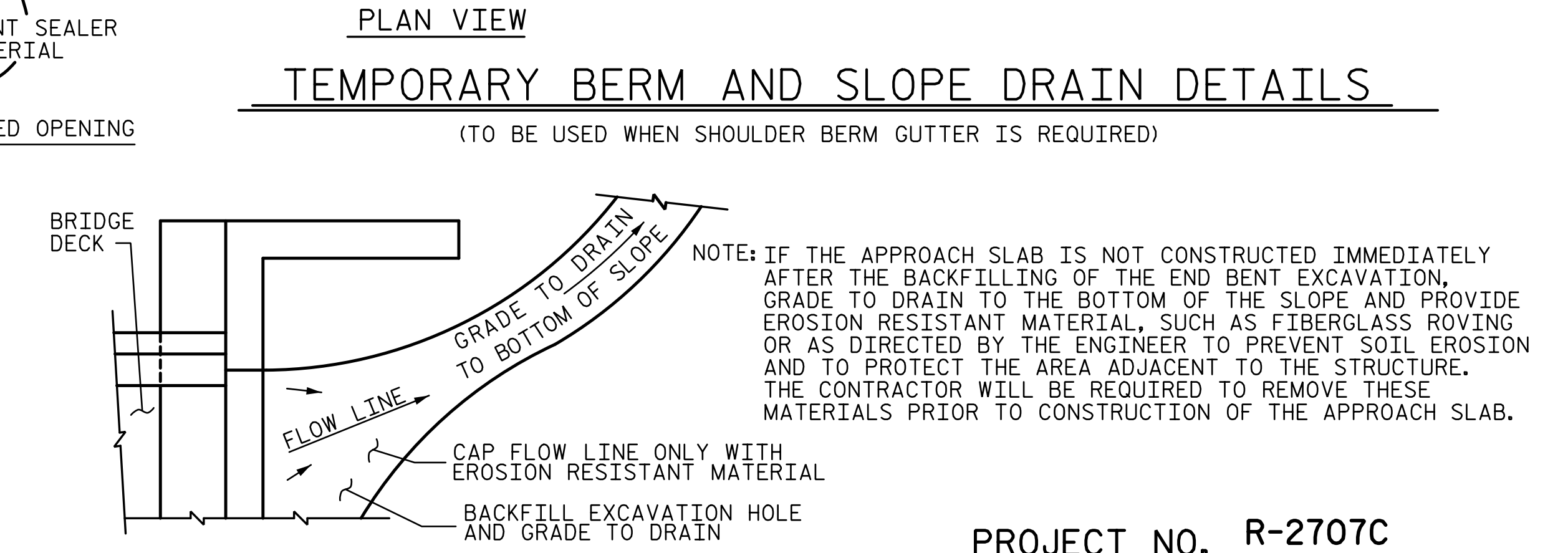
NOTE: IMMEDIATELY AFTER THE CONSTRUCTION OF THE APPROACH SLAB, THE CONTRACTOR SHALL PROVIDE TEMPORARY BERM AND SLOPE DRAIN. CONTRACTOR SHALL GRADE TO PIPE INLET AND PROVIDE EROSION RESISTANT MATERIAL AS SHOWN. THE EROSION RESISTANT MATERIAL SHALL BE EITHER 1) ASPHALT PLANT MIX, TYPE 1 OR TYPE 2, MIN. 2" DEPTH, 2) EROSION CONTROL MAT, OR 3) CONCRETE, AS DIRECTED BY THE ENGINEER. THE SLOPE DRAIN SHALL CONSIST OF A NON-PERFORATED TEMPORARY DRAINAGE PIPE, 12 INCHES IN DIAMETER.



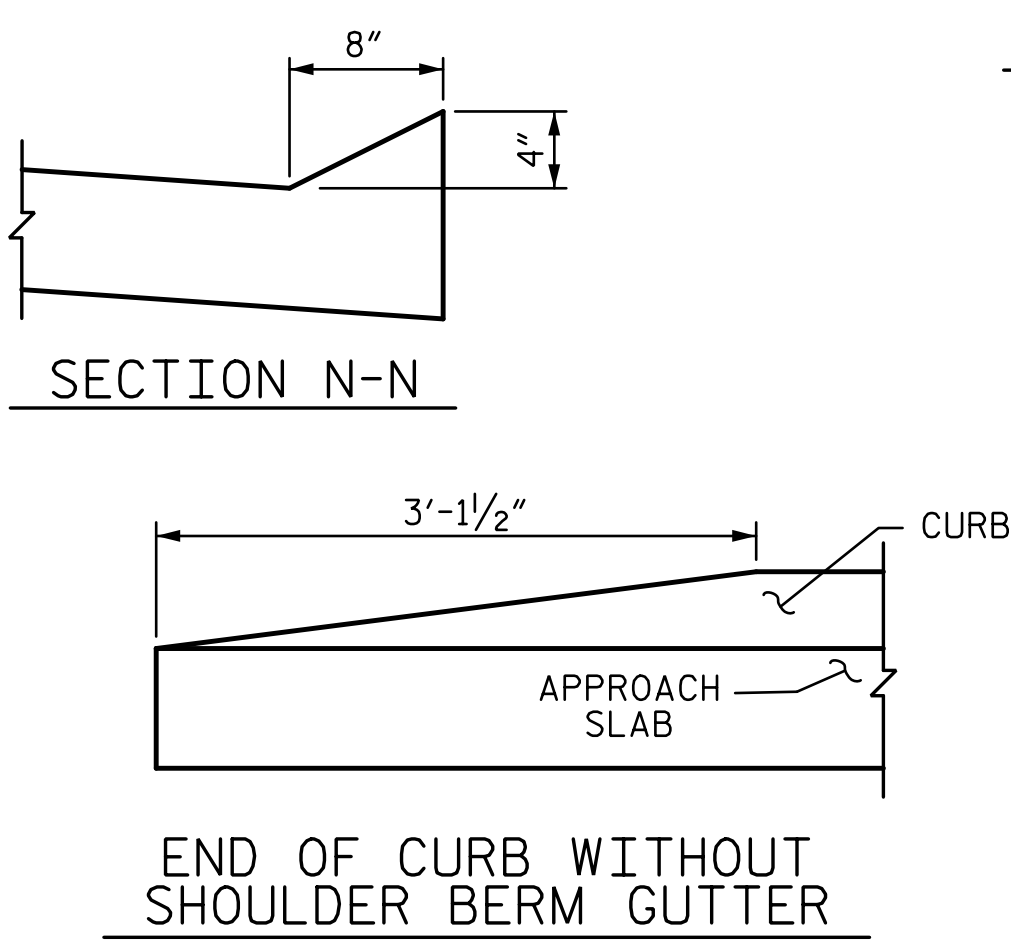
SECTION THRU SLAB



DETAIL "A"



TEMPORARY DRAINAGE DETAIL



SECTION N-N
END OF CURB WITHOUT SHOULDER BERM GUTTER

PROJECT NO. R-2707C
CLEVELAND COUNTY
 STATION: 32+31.41 -Y11REV2-

STATE OF NORTH CAROLINA
 DEPARTMENT OF TRANSPORTATION
 RALEIGH

BRIDGE APPROACH SLAB FOR INTEGRAL ABUTMENT

SEAL 40317
 ENGINEER
 TONY R. LAWS, JR.
 3/6/2017

STV ENGINEERS, INC.
 900 West Trade St., Suite 715
 Charlotte, NC 28202
 NC License Number F-5991

REVISIONS			
NO.	BY:	DATE:	DATE:
1			
2			
3			
4			

SHEET NO. S11-27
 TOTAL SHEETS 27

R:\station\411_053_R2707C_SML.BAS_S11-27.dgn 12:25:53 PM 3/6/2017

DRAWN BY: MBC DATE: 9-16
 CHECKED BY: AJP DATE: 9-16
 DESIGN ENGINEER OF RECORD: T. LAWS DATE: 9-16