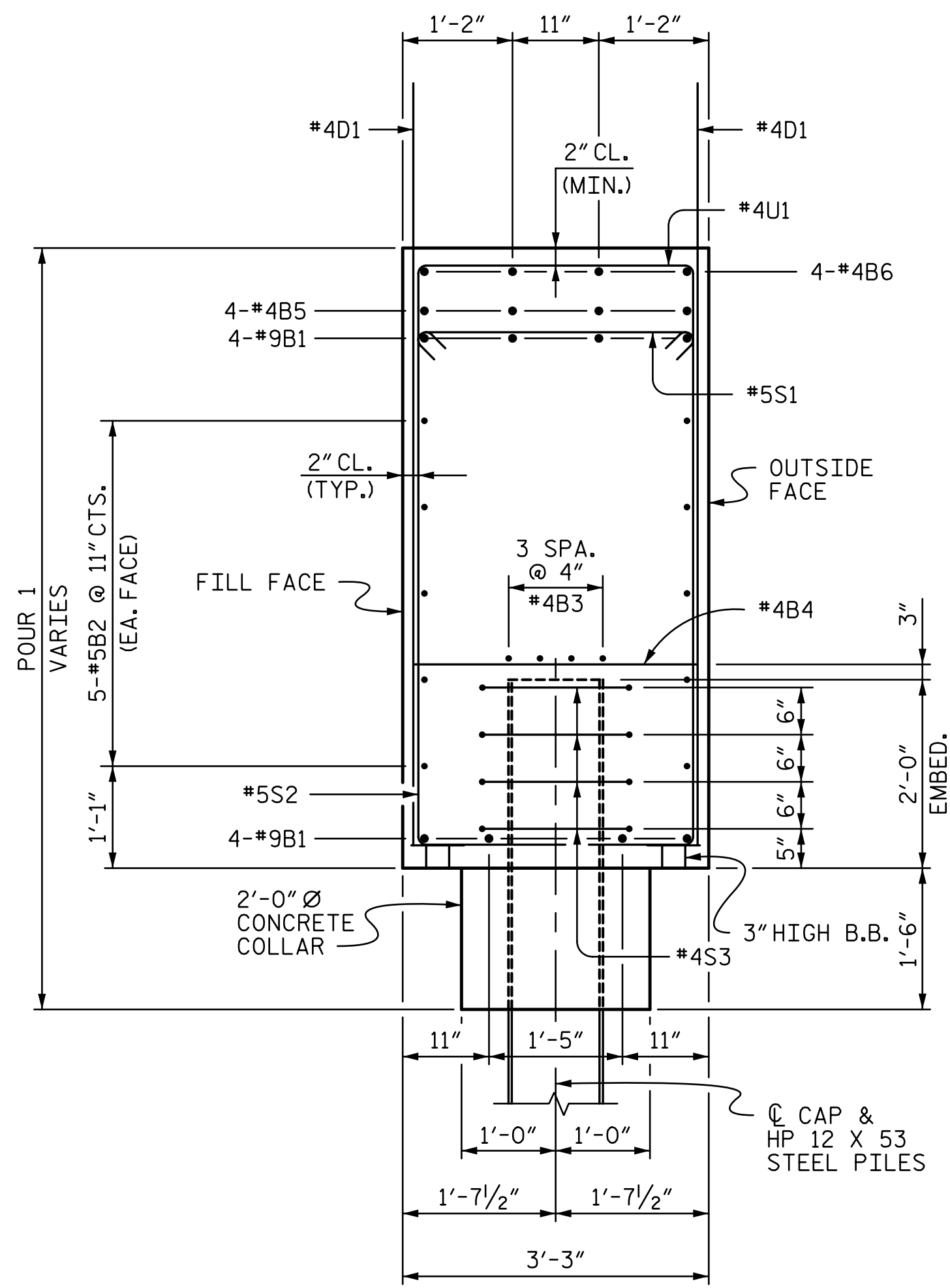
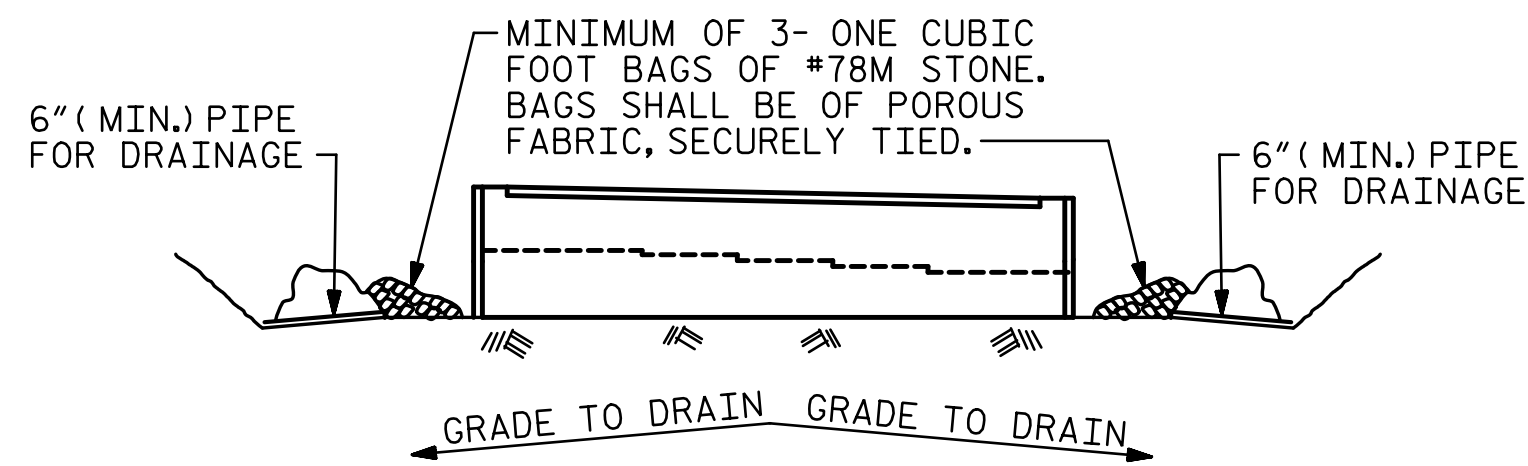


SECTION A-A



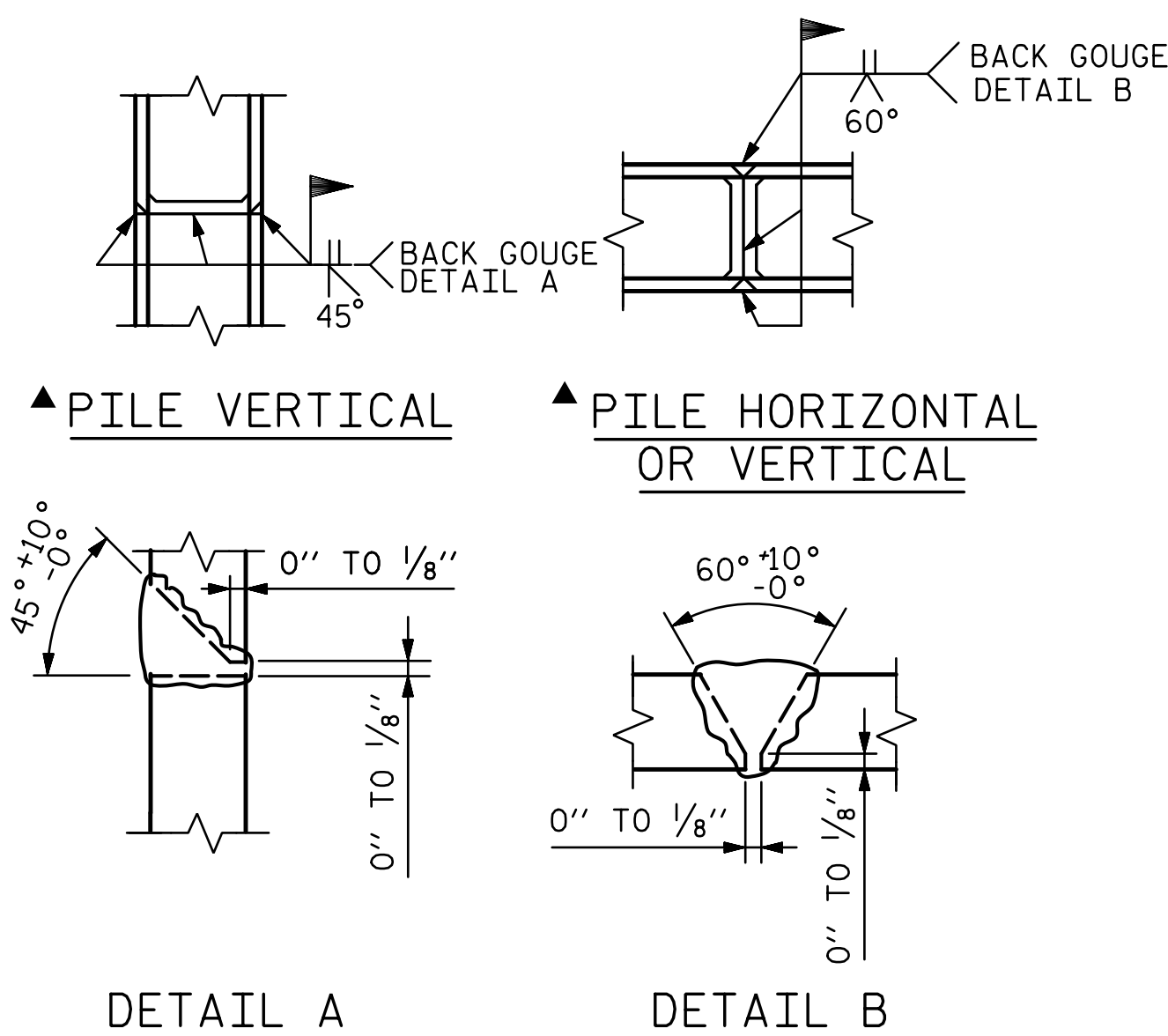
SECTION B-B



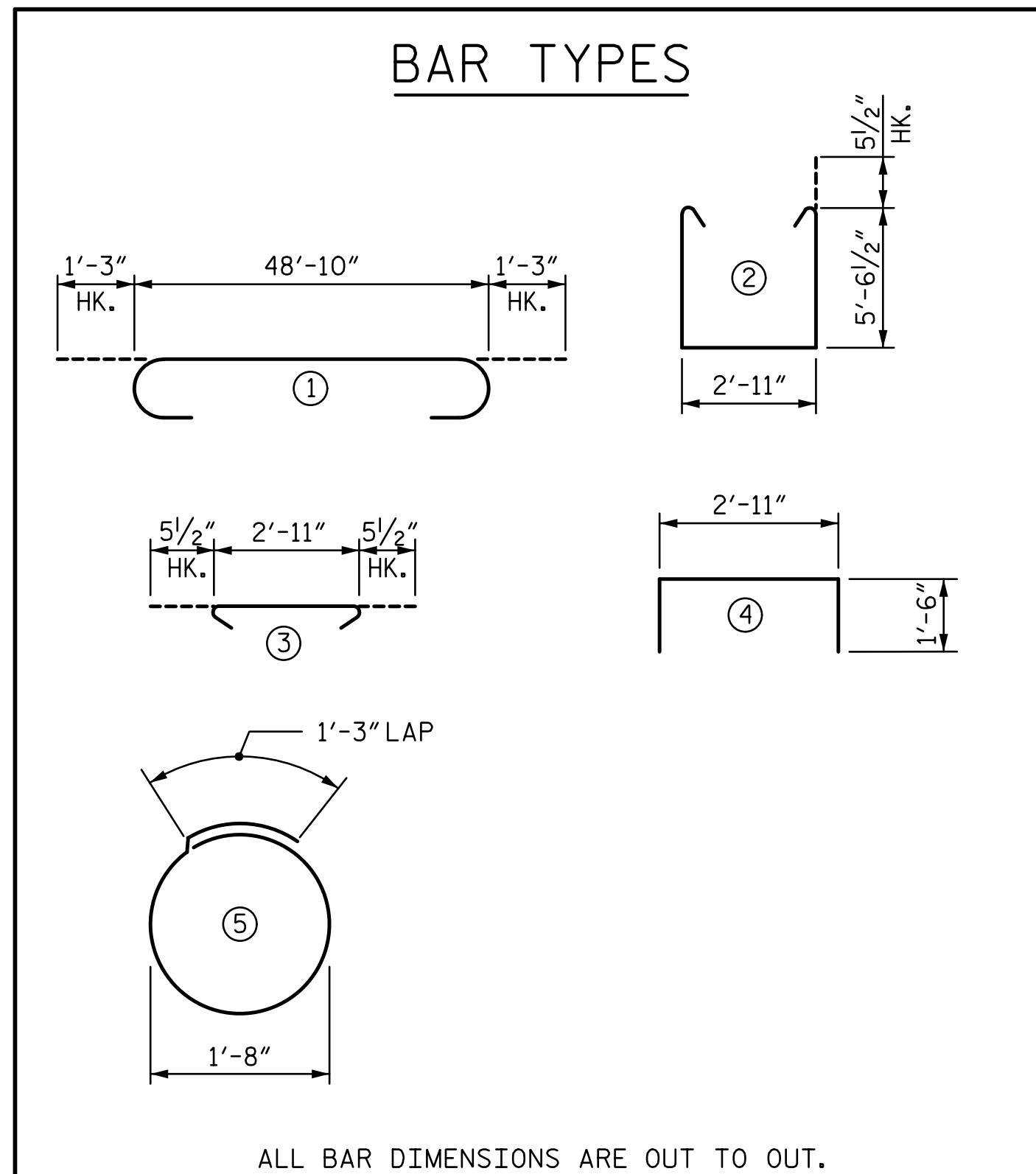
BAGGED STONE AND PIPE SHALL BE PLACED IMMEDIATELY AFTER COMPLETION OF END BENT EXCAVATION. PIPE MAY BE EITHER CONCRETE, CORRUGATED STEEL, CORRUGATED ALUMINUM ALLOY, OR CORRUGATED PLASTIC. PERFORATED PIPE WILL NOT BE ALLOWED.

BAGGED STONE SHALL REMAIN IN PLACE UNTIL THE ENGINEER DIRECTS THAT IT BE REMOVED. THE CONTRACTOR SHALL REMOVE AND DISPOSE OF SILT ACCUMULATIONS AT BAGGED STONE WHEN SO DIRECTED BY THE ENGINEER. BAGS SHALL BE REMOVED AND REPLACED WHENEVER THE ENGINEER DETERMINES THAT THEY HAVE DETERIORATED AND LOST THEIR EFFECTIVENESS.

TEMPORARY DRAINAGE AT END BENT



DETAIL A
DETAIL B
▲ POSITION OF PILE DURING WELDING.
PILE SPLICE DETAILS



ALL BAR DIMENSIONS ARE OUT TO OUT.

BILL OF REINFORCING

MARK	NO.	SIZE	TYPE	LENGTH	WEIGHT
B1	8	#9	①	51'-4"	1,396
B2	10	#5	STR	48'-11"	510
B3	8	#4	STR	25'-8"	137
B4	13	#4	STR	2'-11"	25
B5	4	#4	STR	17'-6"	47
B6	4	#4	STR	10'-7"	28
D1	75	#4	STR	8'-6"	426
H1	28	#7	STR	17'-5"	997
H2	24	#7	STR	16'-2"	793
S1	44	#5	②	14'-11"	685
S2	44	#5	③	3'-10"	176
S3	36	#4	⑤	6'-5"	154
U1	41	#4	④	5'-11"	162
V1	38	#5	STR	8'-8"	343
V2	38	#5	STR	7'-11"	314

QUANTITIES

REINFORCING STEEL	LBS.	END BENT 1
REINFORCING STEEL		6,193
CLASS A CONCRETE		
POUR 1 (CAP, COLLARS & LOWER WING): CU. YARDS		45.3
HP 12 X 53 STEEL PILES	NO.	9
	LIN. FEET	495.0
PILE DRIVING EQUIP. SETUP FOR HP 12x53 STEEL PILES	EA.	9

NOTES:

STIRRUPS IN CAP MAY BE SHIFTED AS NECESSARY TO CLEAR #4D1 BARS.

FOR INTEGRAL BACKWALL REINFORCEMENT, SEE "TYPICAL SECTION AND INTEGRAL BACKWALL" SHEET.

FOR FOUNDATION NOTES, SEE "FOUNDATION LAYOUT" SHEET.

THE TOP SURFACE OF THE END BENT CAP AND WINGS, EXCEPT THE BEARING AREA, SHALL BE RAKED TO A DEPTH OF 1/4".

INSTALL THE 4" DIA. DRAIN PIPE THROUGH THE WING WALL AS REQUIRED FOR REINFORCED BRIDGE APPROACH FILLS, SEE THE ROADWAY PLANS. REINFORCING STEEL IN THE WING WALL MAY BE SHIFTED AS NECESSARY TO CLEAR THE DRAIN PIPE.

THE UPPER PORTION OF THE INTEGRAL END BENT CAP AND THE UPPER PORTION OF THE WINGS SHALL BE POURED WITH THE SUPERSTRUCTURE. SEE SUPERSTRUCTURE PLANS.

PROJECT NO. R-2707C
CLEVELAND COUNTY
 STATION: 32+31.41 -Y11REV2-

SHEET 3 OF 3

DOCUMENT NOT CONSIDERED FINAL UNLESS ALL SIGNATURES COMPLETED	<p>DocuSigned by: Tony R. Laws, Jr. 3/6/2017</p>	STATE OF NORTH CAROLINA DEPARTMENT OF TRANSPORTATION RALEIGH SUBSTRUCTURE END BENT 1 (INTEGRAL)		SHEET NO. S11-22 TOTAL SHEETS 27			
		REVISIONS					
		NO.	BY:	DATE:	NO.	BY:	DATE:
		1			3		
		2			4		