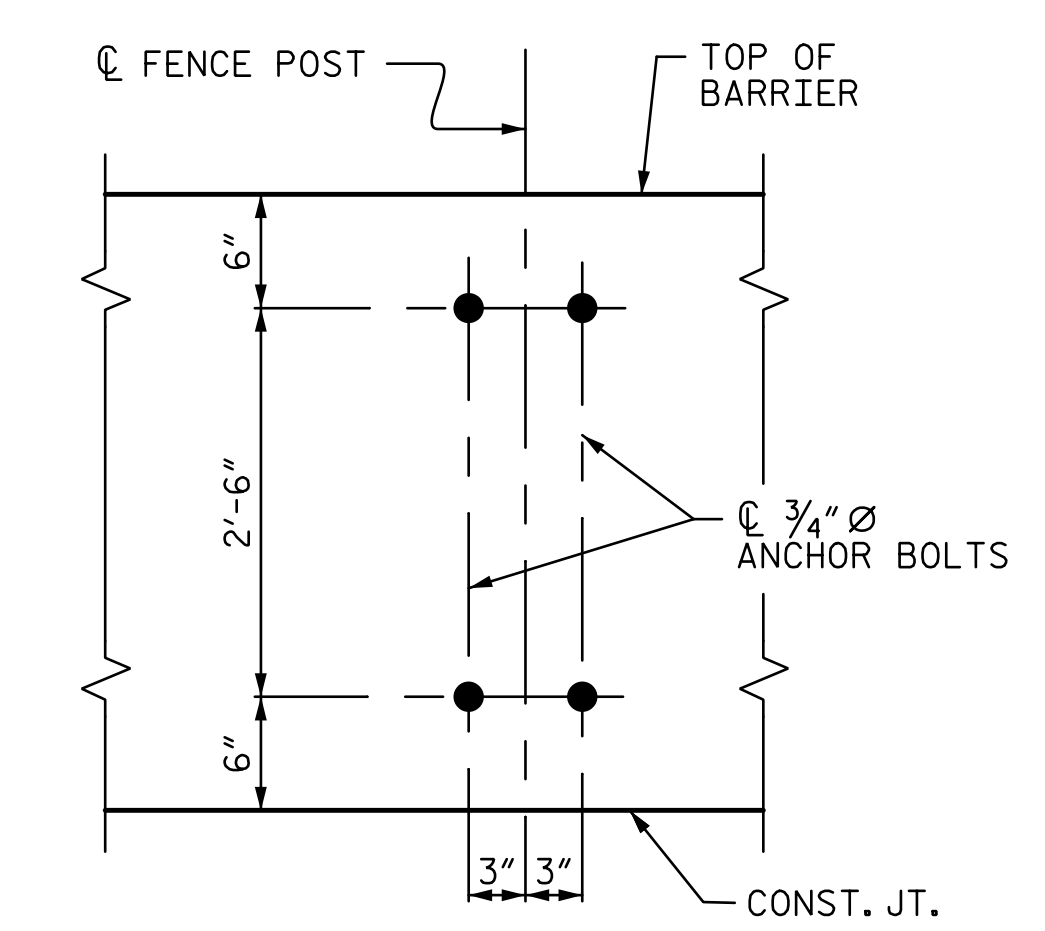
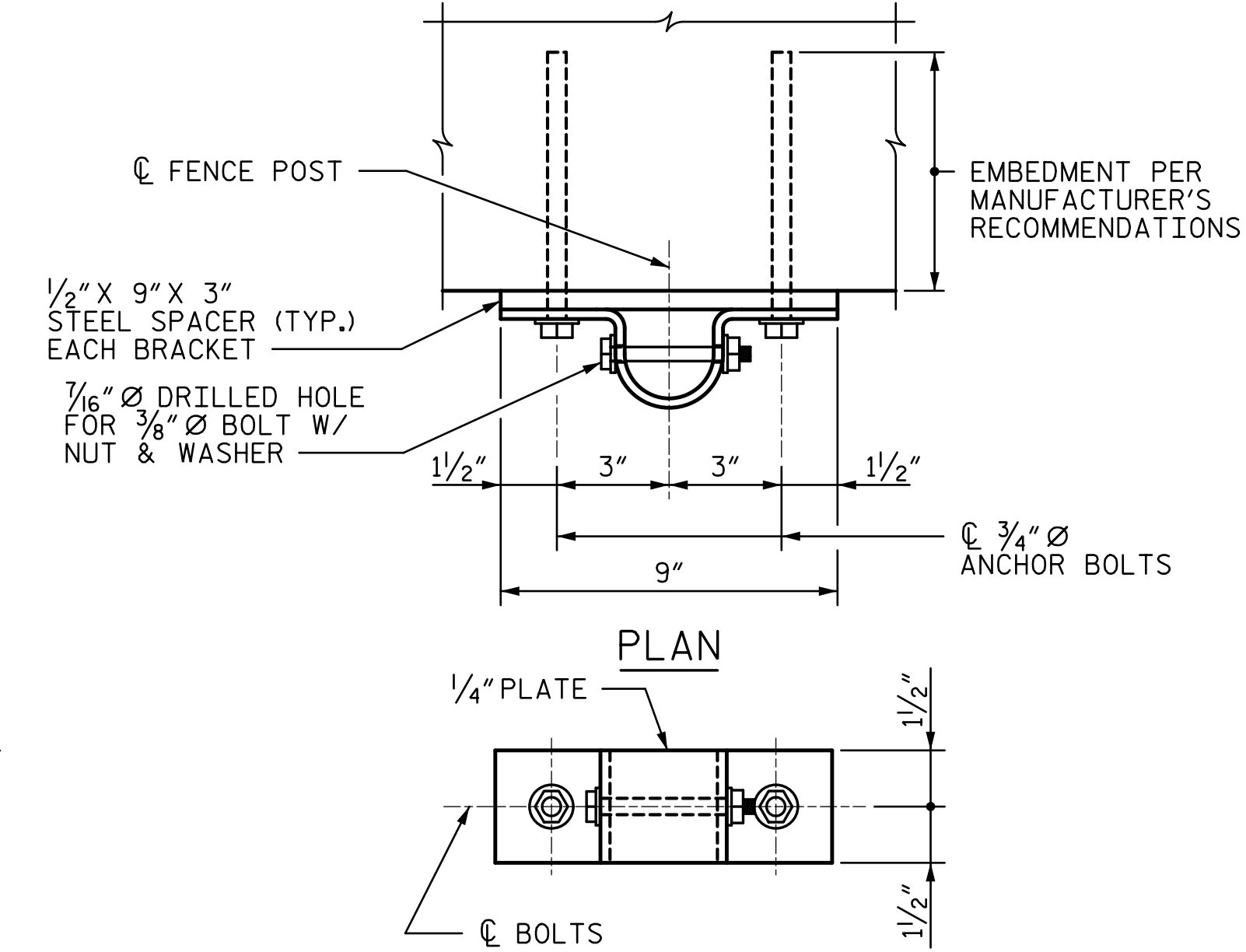


**PLAN OF FENCE POST SPACING**  
 PAY LENGTH 228.0 FEET

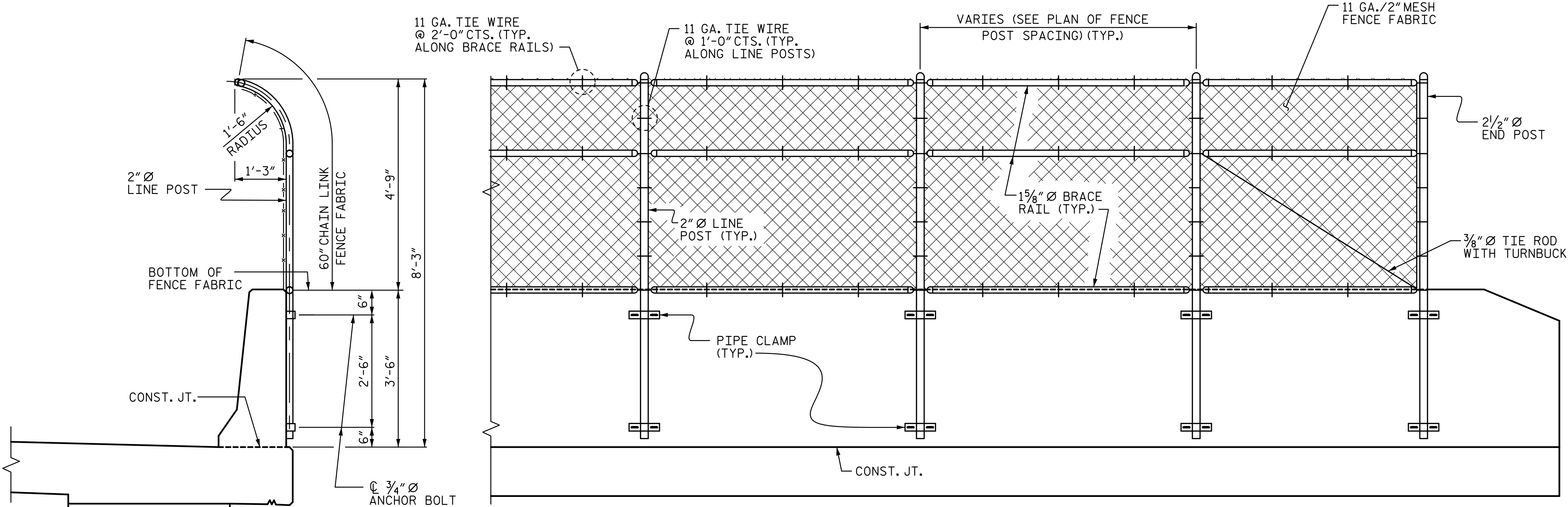


**BOLT SETTING DETAIL**

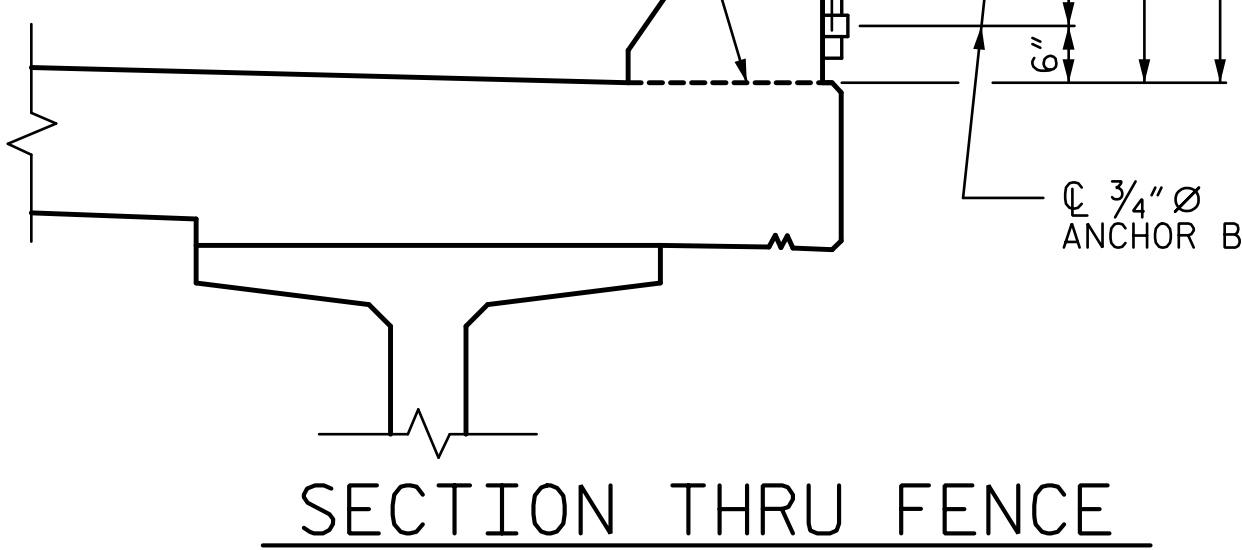
**NOTES:**  
 FOR BRIDGE MOUNTED CHAIN LINK FENCE, SEE SPECIAL PROVISIONS.  
 BOLTS SHALL CONFORM TO THE REQUIREMENTS OF ASTM A307 AND NUTS SHALL CONFORM TO THE REQUIREMENTS OF AASHTO M291. BOLTS, NUTS, AND WASHERS SHALL BE GALVANIZED. (AT THE CONTRACTOR'S OPTION, STAINLESS STEEL BOLTS, NUTS, AND WASHERS MAY BE USED AS AN ALTERNATE FOR THE 3/4" Ø GALVANIZED BOLTS, NUTS, AND WASHERS. THEY SHALL CONFORM TO OR EXCEED THE MECHANICAL REQUIREMENTS OF ASTM A307. THE USE OF THIS ALTERNATE SHALL BE APPROVED BY THE ENGINEER.)  
 LEVEL ONE FIELD TESTING IS REQUIRED AND THE YIELD LOAD OF THE ANCHOR BOLTS IS 10.0 KIPS. FOR ADHESIVELY ANCHORED ANCHOR BOLTS, SEE THE STANDARD SPECIFICATIONS.  
 ALL FENCE MATERIAL SHALL MEET THE REQUIREMENTS OF SECTION 1050 OF THE STANDARD SPECIFICATIONS. GALVANIZE ALL STEEL PARTS AND HARDWARE IN ACCORDANCE WITH ARTICLE 1076 OF THE STANDARD SPECIFICATIONS.  
 FENCE POST LOCATIONS SHALL BE SHIFTED, AS NECESSARY, TO MAINTAIN 1'-0" MINIMUM DISTANCE FROM ANCHOR BOLT TO JOINTS IN CONCRETE BARRIER RAIL.  
 DIMENSIONS TAKEN ALONG OUTSIDE FACE OF CONCRETE BARRIER RAIL.  
 CONTRACTOR SHALL TAKE NECESSARY PRECAUTIONS TO AVOID DAMAGING THE REINFORCING STEEL IN CONCRETE BARRIER RAIL.



PROJECT NO. R-2707C  
CLEVELAND COUNTY  
 STATION: 32+31.41 -Y11REV2-



**PARTIAL ELEVATION**



STATE OF NORTH CAROLINA  
 DEPARTMENT OF TRANSPORTATION  
 RALEIGH

**BRIDGE MOUNTED CHAIN LINK FENCE**

DocuSigned by:  
 Tony R. Laws, Jr.  
 3/6/2017

STV ENGINEERS, INC.  
 900 West Trade St., Suite 715  
 Charlotte, NC 28202  
 NC License Number F-5991

REVISIONS					
NO.	BY:	DATE:	NO.	BY:	DATE:
1			3		
2			4		

SHEET NO. S11-18  
 TOTAL SHEETS 27

R:\Ustation\411\_035\_R2707C\_SML\_BMCLF\_S11-18.dgn 12:25:44 PM 3/6/2017

DRAWN BY: <u>MBC</u>	DATE: <u>9-16</u>	DESIGN ENGINEER OF RECORD: <u>T. LAWS</u>	DATE: <u>9-16</u>
CHECKED BY: <u>AJP</u>	DATE: <u>9-16</u>		