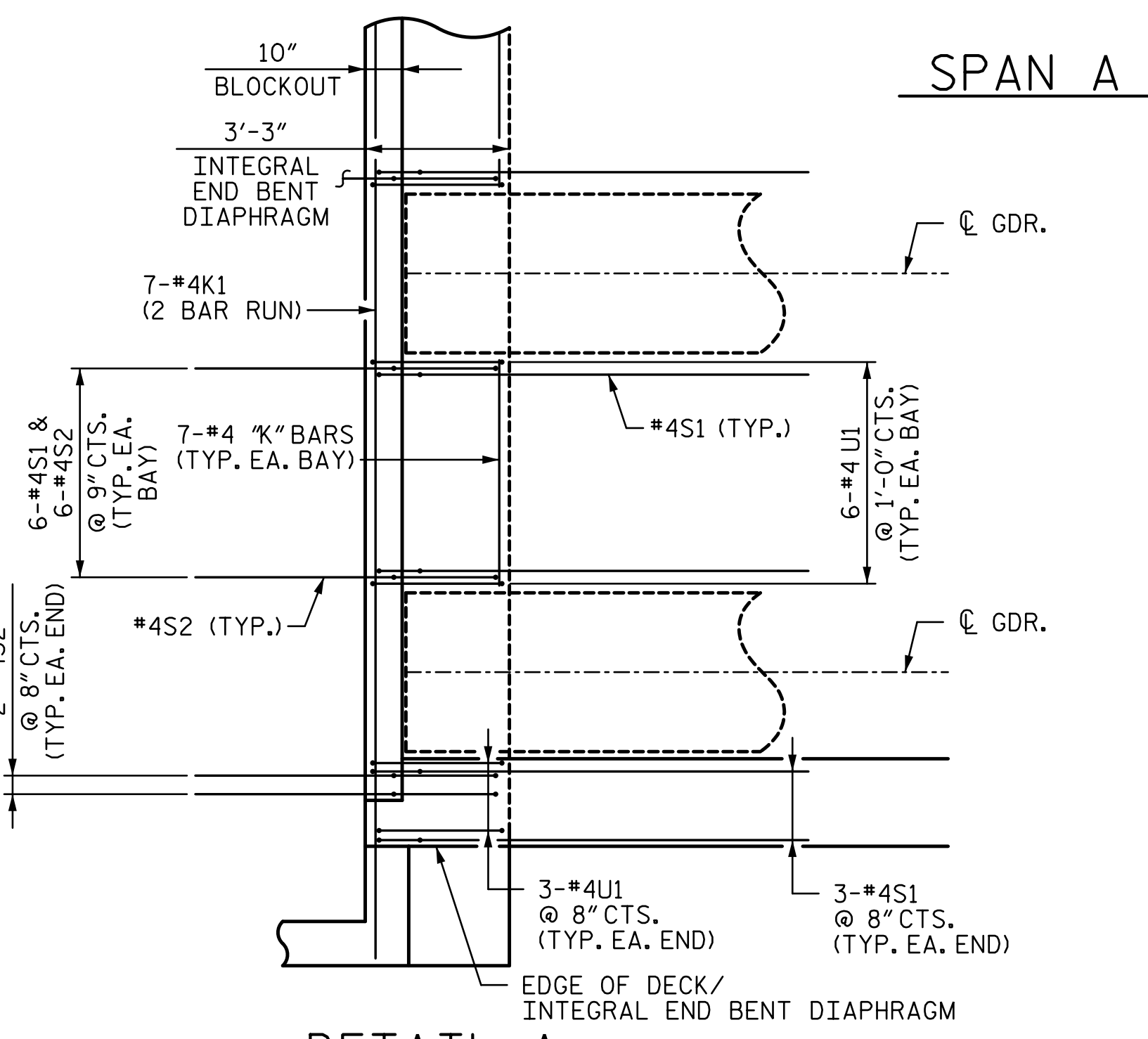


TOTAL BRIDGE LENGTH = 122'-9"
 FILL FACE END BENT 1 TO FILL FACE END BENT 2



DETAIL A
 (END BENT 1 SHOWN, END BENT 2 MIRRORED)
 (*#4U2 BARS NOT SHOWN FOR CLARITY,
 SEE "PLAN OF SPAN DETAILS" SHEETS)

NOTES:

1. FOR CONCRETE BARRIER RAIL DIMENSIONS, REINFORCEMENT AND JOINT SPACING, SEE "CONCRETE BARRIER RAIL" SHEET.
2. FOR POURING SEQUENCE, SEE "SUPERSTRUCTURE BILL OF MATERIAL" SHEET.
3. FOR TRANSVERSE CONST. JOINT IN DECK SLAB, SEE "SUPERSTRUCTURE DETAILS" SHEET.
4. FOR SPACING OF TOP AND BOTTOM "B" BARS, SEE "TYPICAL SECTION AND INTEGRAL BACKWALL" SHEET.

PROJECT NO. R-2707C
CLEVELAND COUNTY
 STATION: 32+31.41 -Y11REV2-
 SHEET 1 OF 3

DOCUMENT NOT CONSIDERED FINAL UNLESS ALL SIGNATURES COMPLETED	<p>SEAL 40317 ENGINEER TONY R. LAWS, JR. DocuSigned by: Tony R. Laws, Jr. 3/6/2017</p>	STATE OF NORTH CAROLINA DEPARTMENT OF TRANSPORTATION RALEIGH						SHEET NO. S11-08 TOTAL SHEETS 27
		SUPERSTRUCTURE PLAN OF SPAN						
		REVISIONS						
		NO.	BY:	DATE:	NO.	BY:	DATE:	
1			3					
2			4					

R:\station\411_015_r2707c_SMU_P05_S11-8.dgn 12:25:38 PM 3/6/2017

DRAWN BY: <u>MBC</u>	DATE: <u>9-16</u>	DESIGN ENGINEER OF RECORD: <u>T. LAWS</u>	DATE: <u>9-16</u>
CHECKED BY: <u>JTG</u>	DATE: <u>9-16</u>		