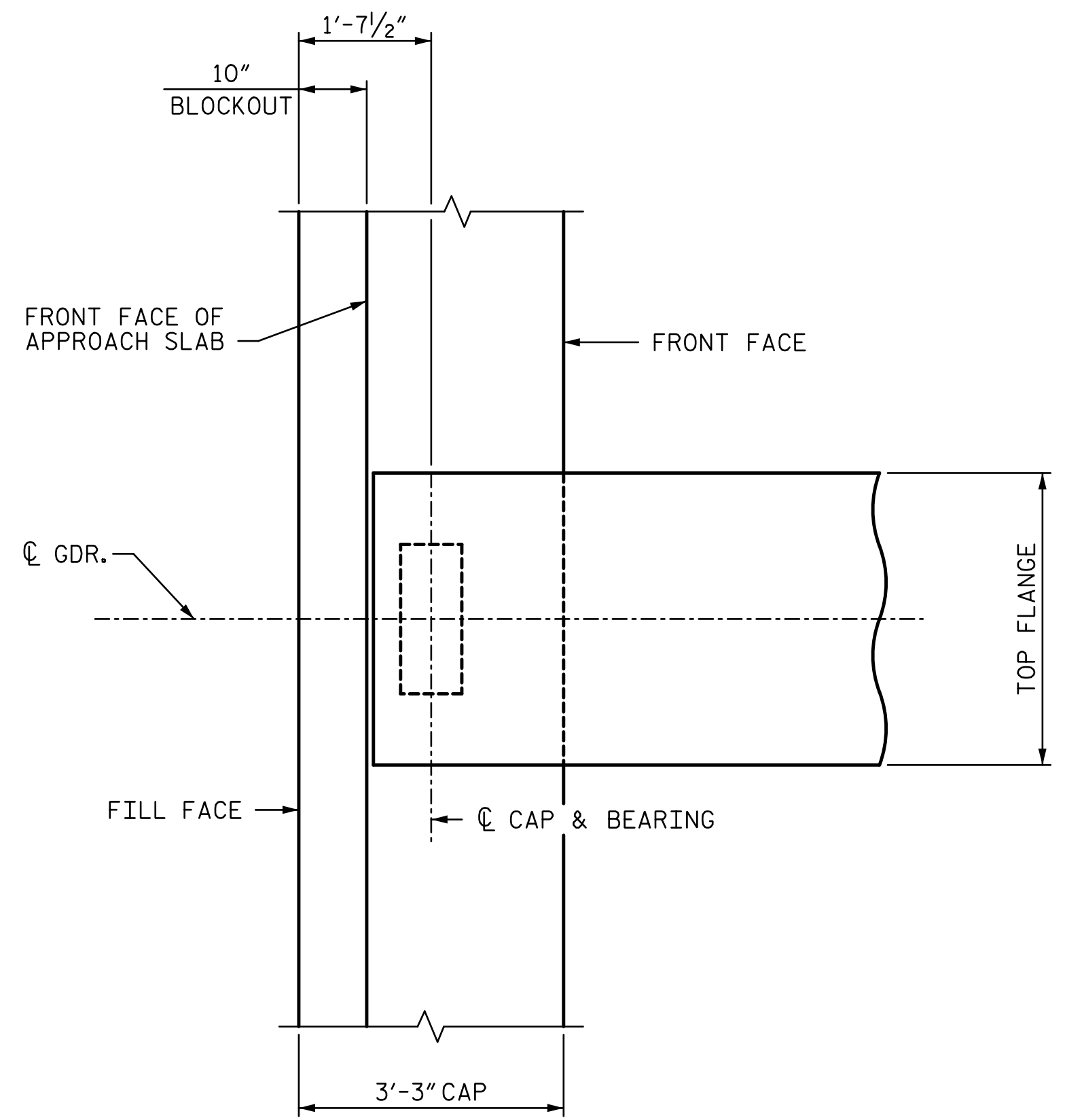
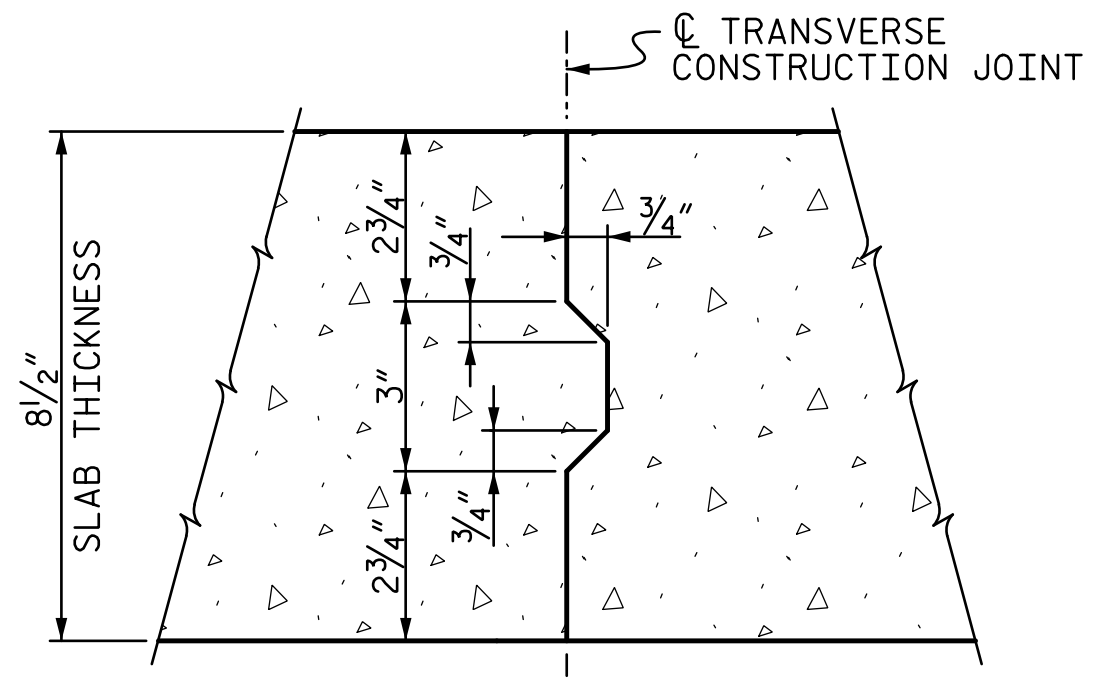


END OF GIRDER DETAIL AT INTEGRAL END BENT



PLAN



NOTE: REINFORCING STEEL IN SLAB NOT SHOWN. LONGITUDINAL REINFORCING STEEL SHALL BE CONTINUOUS THROUGH JOINT.

TRANSVERSE CONSTRUCTION JOINT
IN DECK SLAB

PROJECT NO. R-2707C
CLEVELAND COUNTY
STATION: 32+31.41 -Y11REV2-

R:\Ustation\411_013_R2707C_SMU_SUPD_sil-7.dgn 12:25:37 PM 3/6/2017

DRAWN BY : <u>MBC</u>	DATE : <u>9-16</u>	DESIGN ENGINEER OF RECORD: <u>T. LAWS</u>	DATE : <u>9-16</u>
CHECKED BY : <u>JTG</u>	DATE : <u>9-16</u>		

DOCUMENT NOT CONSIDERED FINAL UNLESS ALL SIGNATURES COMPLETED

DocuSigned by:
Tony R. Laws, Jr.
3/6/2017

STV ENGINEERS, INC.
900 West Trade St., Suite 715
Charlotte, NC 28202
NC License Number F-5991

STATE OF NORTH CAROLINA
DEPARTMENT OF TRANSPORTATION
RALEIGH

**SUPERSTRUCTURE
SUPERSTRUCTURE
DETAILS**

REVISIONS			
NO.	BY:	DATE:	
1			
2			
3			
4			

SHEET NO. S11-07
TOTAL SHEETS 27