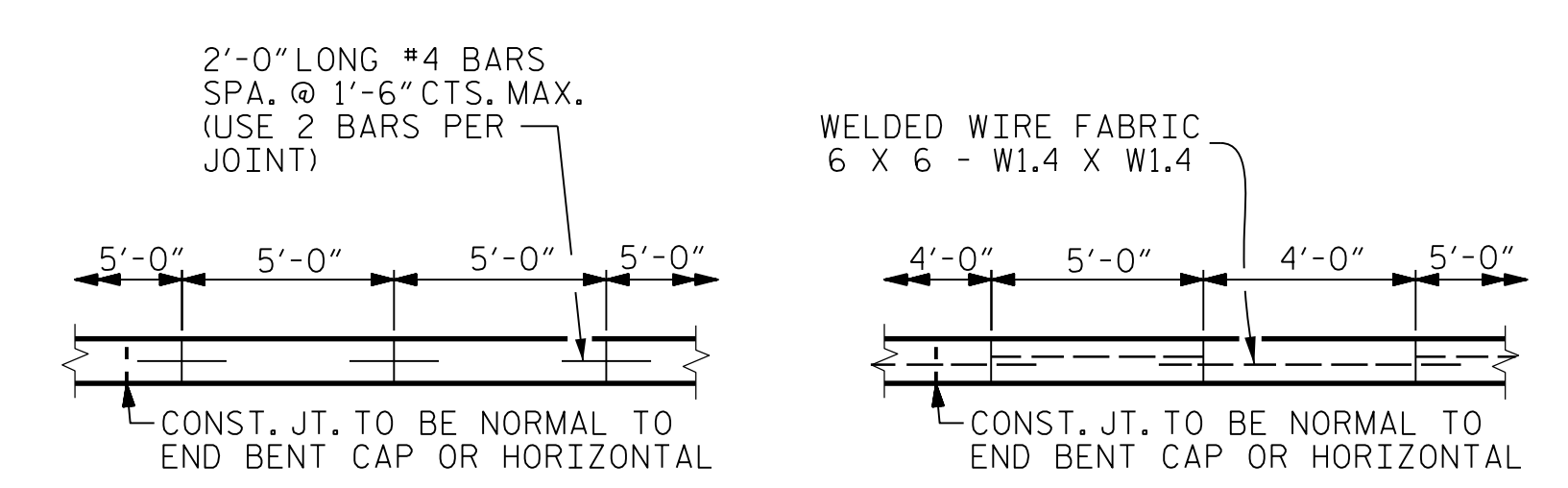


END BENT 1 (INTEGRAL) PLAN
 APPROACH SLABS AND CONCRETE DITCHES NOT SHOWN
END BENT 2 (INTEGRAL)

GENERAL NOTES

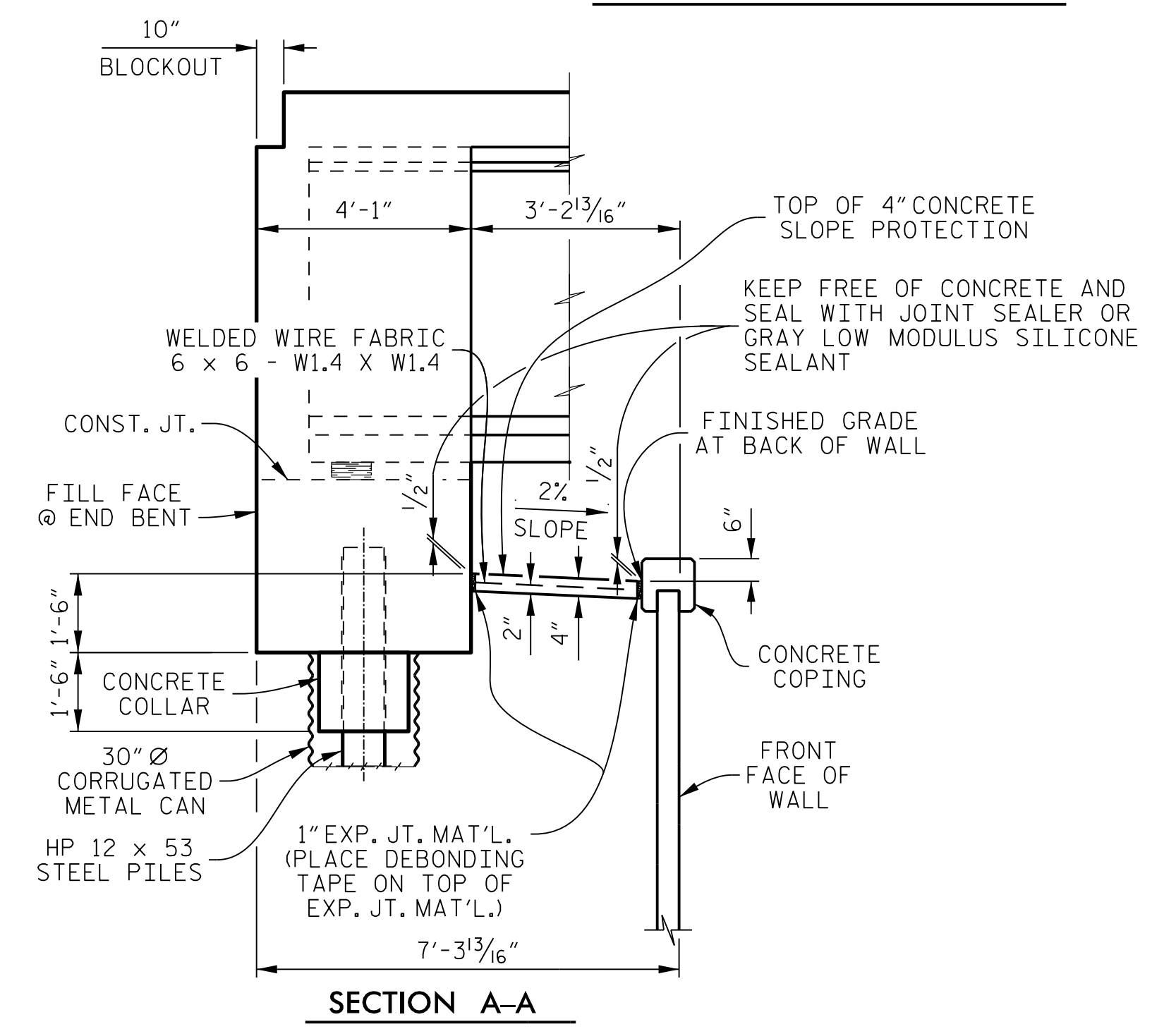
SLOPE PROTECTION SHALL BE PLACED UNDER THE ENDS OF THE BRIDGE AS SHOWN IN THE DETAILS.
 STRAIGHT EDGING WILL NOT BE REQUIRED UNLESS, IN THE OPINION OF THE ENGINEER, VISUAL INSPECTION INDICATES A NEED FOR IT.
 MEASUREMENT AND PAYMENT SHALL BE AS PRESCRIBED IN SECTION 462 OF THE STANDARD SPECIFICATIONS.

SLOPE PROTECTION SHALL CONSIST OF 4" POURED-IN-PLACE CONCRETE PAVING AS SHOWN IN THE DETAILS ON THIS SHEET. CONCRETE SHALL BE CLASS "B", THE CONCRETE SURFACE SHALL BE FLOATED WITH A WOODEN FLOAT AND FINISHED. WELDED WIRE FABRIC REINFORCING SHALL BE 6 x 6 - W1.4 x W1.4. SLOPE PROTECTION SHALL BE POURED IN 5' STRIPS AS SHOWN IN THE "POURING DETAIL" WITH 2'-0" LONG #4 BARS PLACED ALONG THE SLOPE BETWEEN STRIPS AT 1'-6" MAXIMUM SPACING. SLOPE PROTECTION MAY BE POURED IN ALTERNATE 4' AND 5' STRIPS AS SHOWN IN THE "OPTIONAL POURING DETAIL" WITH ADJACENT RUNS OF WELDED WIRE FABRIC LAPPING AT LEAST 6". THE COST OF THE WELDED WIRE FABRIC AND #4 BARS, IF USED, SHALL BE INCLUDED IN THE CONTRACT UNIT PRICE BID PER SQUARE YARD FOR SLOPE PROTECTION.



POURING DETAIL

OPTIONAL POURING DETAIL



SECTION A-A

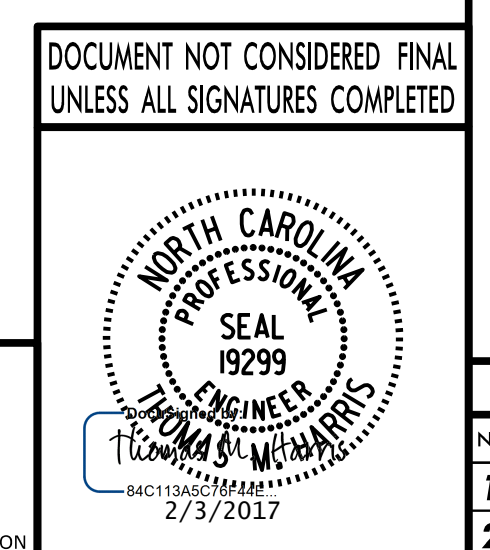
BRIDGE AT STA. 611 + 32.01 -L- (RIGHT LANE)	4" SLOPE PROTECTION	WELDED WIRE FABRIC
	SQUARE YARDS	APPROX. LINEAR FEET
END BENT 1	14	25
END BENT 2	14	25

PROJECT NO. **R-2707C**
CLEVELAND COUNTY
 STATION: **611 + 32.01 -L-**

STATE OF NORTH CAROLINA
 DEPARTMENT OF TRANSPORTATION
 RALEIGH

STANDARD

SLOPE PROTECTION DETAILS (RIGHT LANE)



PLANS PREPARED BY:
PARSONS
 5540 CenterView Drive, Suite 217
 Raleigh, NC 27606-3386
 NC LICENSE No. F-0246

DRAWN BY : K. E. LOFTON	DATE : 10-16
CHECKED BY : A. D. SHAH	DATE : 10-16
DESIGN ENGINEER : T. M. HARRIS	DATE : 10-16

REVISIONS						SHEET No.
No.	BY:	DATE:	No.	BY:	DATE:	TOTAL SHEETS
1			3			25
2			4			

FILE: j:\2707c_struct\sheet\plans - smc_final\410_045_2707C_smc_spl_S10-25.dgn
 DATE: 10/20/17 12:48:41 PM

ASSEMBLED BY : K. E. LOFTON	DATE : 10-16
CHECKED BY : A. D. SHAH	DATE : 10-16
DRAWN BY : ELR	5/92
CHECKED BY : GRP	6/92
REV. 10/1/11	MAA/GM
REV. 12/21/11	MAA/GM
REV. 1/16	MAA/TMG