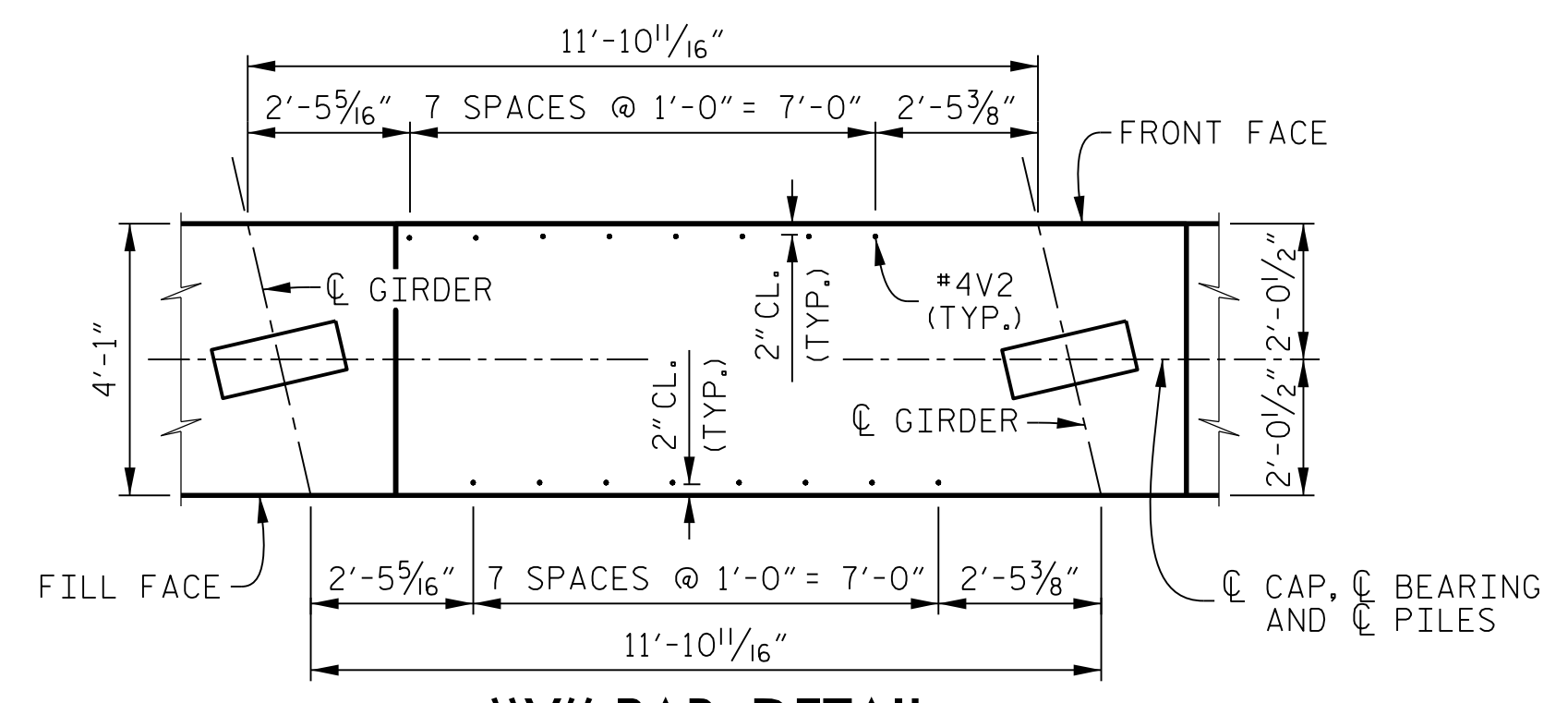
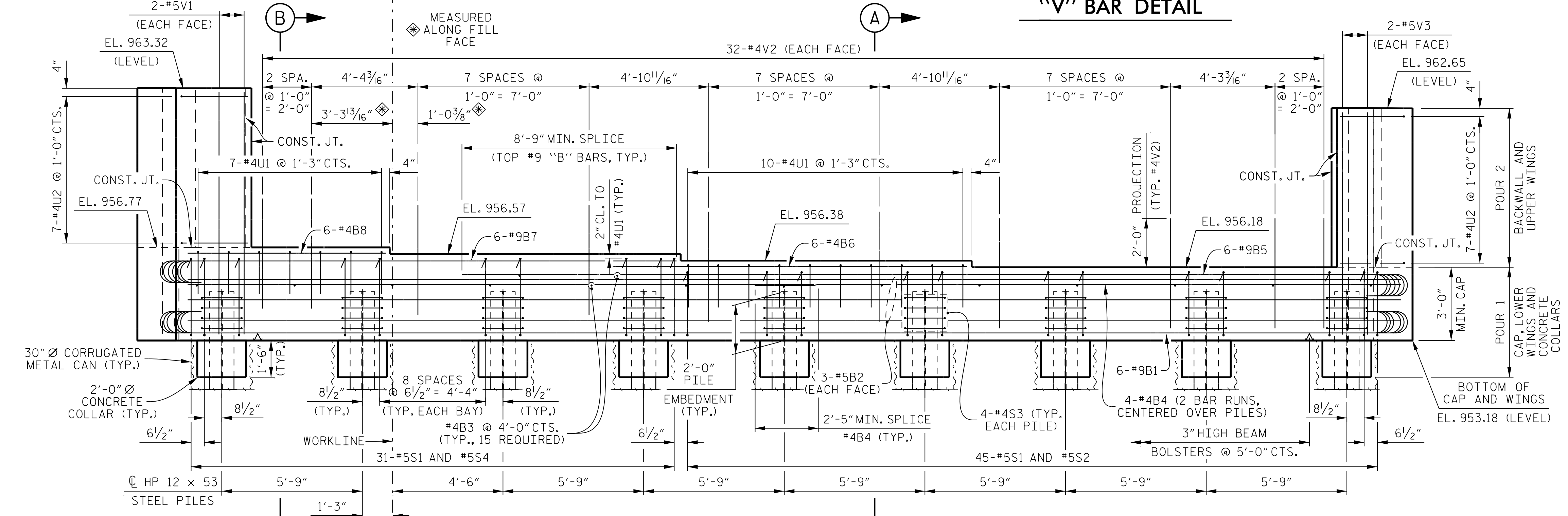


PLAN



"V" BAR DETAIL



ELEVATION

NOTES

- STIRRUPS AND "U" BARS IN CAP MAY BE SHIFTED AS NECESSARY TO CLEAR #4V2 BARS.
- THE TOP SURFACE OF THE END BENT CAP UNDER THE INTEGRAL END BENT DIAPHRAGM, EXCEPT THE BEARING AREA, SHALL BE RAKED TO A DEPTH OF 1/4".
- FOR PILE SPLICE DETAILS, SEE SHEET 3 OF 3.
- FOR TEMPORARY DRAINAGE AT END BENT DETAIL, SEE SHEET 3 OF 3.
- FOR SECTION A-A AND SECTION B-B, SEE SHEET 3 OF 3.
- FOR INTEGRAL END BENT DIAPHRAGM DETAILS, SEE "TYPICAL SECTION" AND "PLAN OF SPAN" SHEETS.
- THE COST TO FURNISH AND INSTALL THE 30" Ø CORRUGATED METAL CANS SHALL BE INCLUDED IN THE CONTRACT PRICE FOR MSE RETAINING WALL.
- WING (W1) AND WING (W2) DETAILS ARE BASED ON A 5 1/2" WALL PANEL THICKNESS AND USING DOWELS FOR THE COPING. CONTRACTOR MAY ADJUST WINGS SLIGHTLY AS NECESSARY, BASED ON APPROVED MSE WALL SHOP DRAWINGS.

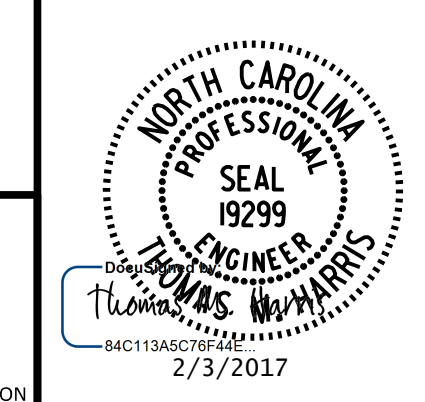
PROJECT NO. **R-2707C**
CLEVELAND COUNTY
 STATION: **611+32.01 -L-**

SHEET 1 OF 3

STATE OF NORTH CAROLINA
 DEPARTMENT OF TRANSPORTATION
 RALEIGH
SUBSTRUCTURE
END BENT 1
(RIGHT LANE)

REVISIONS						SHEET No. S10-17
No.	BY:	DATE:	No.	BY:	DATE:	
1			3			TOTAL SHEETS 25
2			4			

DOCUMENT NOT CONSIDERED FINAL
 UNLESS ALL SIGNATURES COMPLETED



PLANS PREPARED BY:
PARSONS
 5540 CenterView Drive, Suite 217
 Raleigh, NC 27606-3386
 NC LICENSE No. F-0246

DRAWN BY: **K. E. LOFTON** DATE: **10-16**
 CHECKED BY: **A. D. SHAH** DATE: **10-16**
 DESIGN ENGINEER: **T. M. HARRIS** DATE: **10-16**

FILE: j:\p2707c\structures\plans - smc\final\410_003_02707C_smc_eb11_510-17.dgn
 DATE: 10/20/17 12:48:28 PM