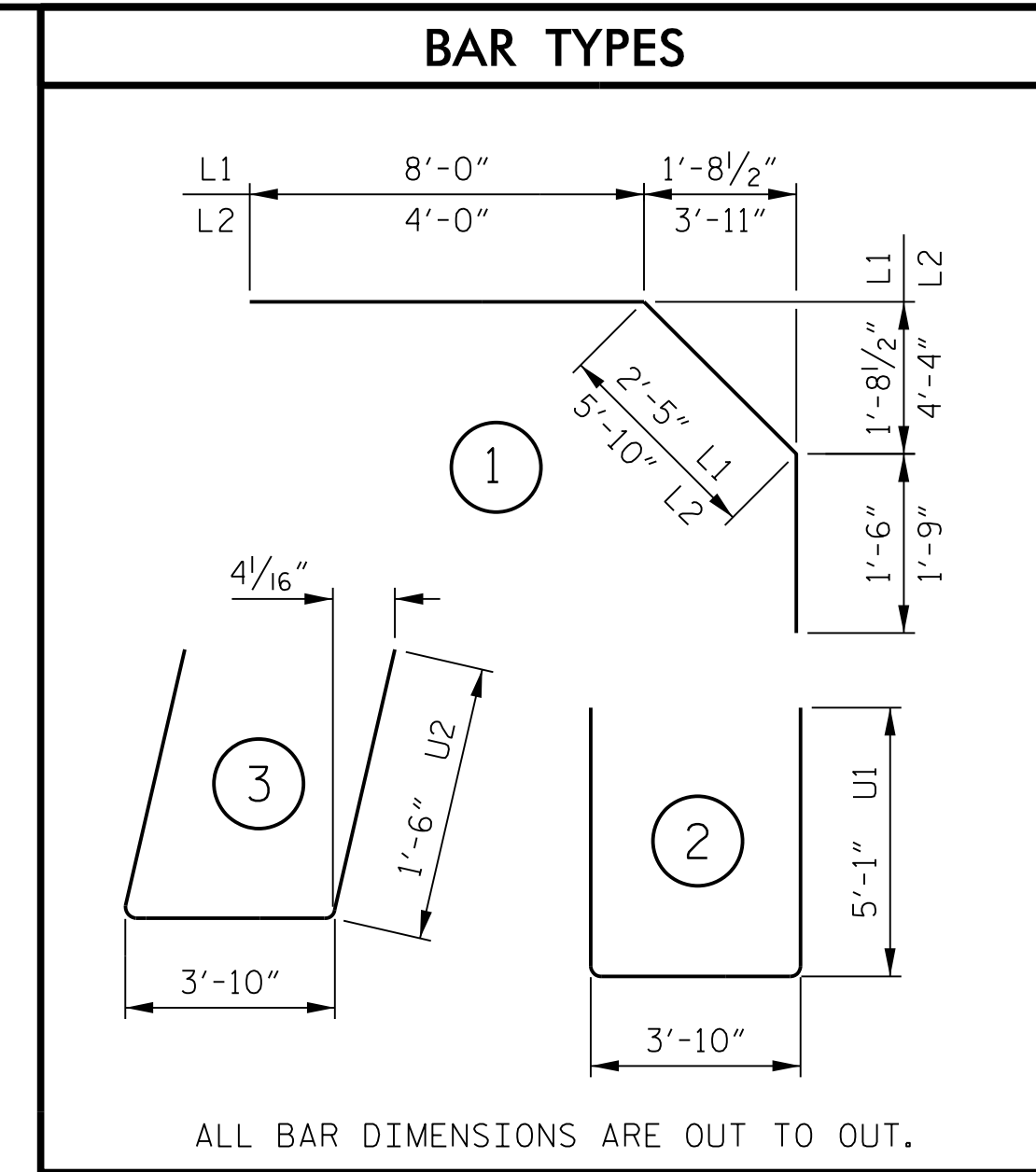


POURING SEQUENCE

CLASS AA CONCRETE BREAKDOWN	
POUR 1	116.9 CU. YDS.
POUR 2	44.1 CU. YDS.
POUR 3	44.1 CU. YDS.
TOTAL	205.1 CU. YDS.

NOTES
 POUR 2 AND POUR 3 MAY BE COMBINED.
 DIRECTION OF POUR 1 MAY BE REVERSED.
 # INDICATES POUR NUMBER AND DIRECTION OF POUR.

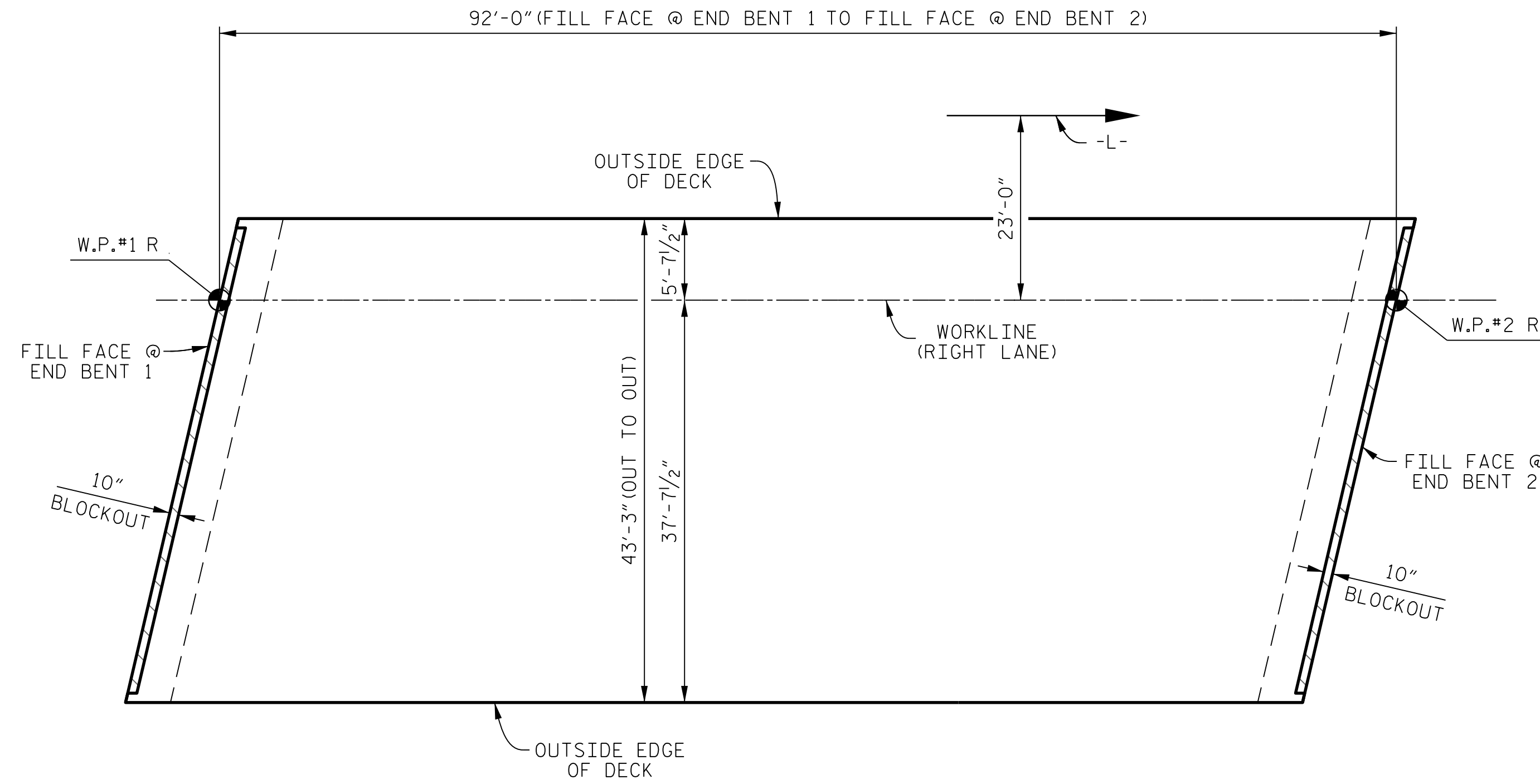


BILL OF MATERIAL		SPAN A				
BAR No.	SIZE	TYPE	LENGTH	WEIGHT		
*A1	161	#5	STR	42'-11"	7,207	
*A101	2	#5	STR	40'-9"	85	
*A102	2	#5	STR	38'-7"	80	
*A103	2	#5	STR	36'-5"	76	
*A104	2	#5	STR	34'-3"	71	
*A105	2	#5	STR	32'-2"	67	
*A106	2	#5	STR	30'-0"	63	
*A107	2	#5	STR	27'-10"	58	
*A108	2	#5	STR	25'-8"	54	
*A109	2	#5	STR	23'-6"	49	
*A110	2	#5	STR	21'-4"	45	
*A111	2	#5	STR	19'-2"	40	
*A112	2	#5	STR	17'-0"	35	
*A113	2	#5	STR	14'-10"	31	
*A114	2	#5	STR	12'-8"	26	
*A115	2	#5	STR	10'-6"	22	
*A116	2	#5	STR	8'-4"	17	
*A117	2	#5	STR	6'-2"	13	
*A118	2	#5	STR	4'-0"	8	
A2	161	#5	STR	42'-11"	7,207	
A201	2	#5	STR	40'-9"	85	
A202	2	#5	STR	38'-7"	80	
A203	2	#5	STR	36'-5"	76	
A204	2	#5	STR	34'-3"	71	
A205	2	#5	STR	32'-2"	67	
A206	2	#5	STR	30'-0"	63	
A207	2	#5	STR	27'-10"	58	
A208	2	#5	STR	25'-8"	54	
A209	2	#5	STR	23'-6"	49	
A210	2	#5	STR	21'-4"	45	
A211	2	#5	STR	19'-2"	40	
A212	2	#5	STR	17'-0"	35	
A213	2	#5	STR	14'-10"	31	
A214	2	#5	STR	12'-8"	26	
A215	2	#5	STR	10'-6"	22	
A216	2	#5	STR	8'-4"	17	
A217	2	#5	STR	6'-2"	13	
A218	2	#5	STR	4'-0"	8	
*B1	120	#4	STR	24'-0"	1,924	
*B2	162	#5	STR	18'-5"	3,112	
B3	114	#5	STR	46'-1"	5,479	
K1	28	#4	STR	22'-11"	429	
K2	6	#4	STR	7'-10"	31	
K3	30	#4	STR	10'-9"	215	
K4	6	#4	STR	9'-4"	37	
K5	4	#4	STR	2'-2"	6	
K6	20	#4	STR	3'-7"	48	
K7	4	#4	STR	2'-11"	8	
*L1	60	#4	1	11'-11"	478	
*L2	56	#4	1	11'-7"	433	
U1	60	#4	2	14'-0"	561	
U2	28	#4	3	6'-10"	128	
REINFORCING STEEL				14,989	LBS.	
*EPOXY COATED REINFORCING STEEL				13,994	LBS.	

TOTAL SUPERSTRUCTURE QUANTITIES			
	REINFORCING STEEL	EPOXY COATED REINFORCING STEEL	CLASS "AA" CONCRETE
	LBS.	LBS.	CU. YDS.
SPAN A	14,989	13,994	205.1
** TOTAL	14,989	13,994	205.1

** QUANTITIES FOR CONCRETE BARRIER RAIL ARE NOT INCLUDED. SEE "CONCRETE BARRIER RAIL" SHEET FOR DETAILS.

GROOVING BRIDGE FLOORS	
APPROACH SLAB AT END BENT 1	1,089 SQ. FT.
BRIDGE DECK	3,327 SQ. FT.
APPROACH SLAB AT END BENT 2	1,089 SQ. FT.
TOTAL	5,505 SQ. FT.



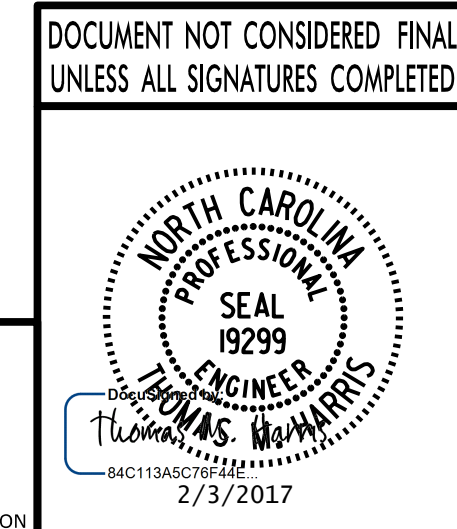
LAYOUT FOR COMPUTING AREA OF REINFORCED CONCRETE DECK SLAB

(3,979 SQ. FT.)

BAR SIZE	SUPERSTRUCTURE EXCEPT APPROACH SLABS, PARAPET AND BARRIER RAIL		APPROACH SLABS		PARAPET AND BARRIER RAIL
	EPOXY COATED	UNCOATED	EPOXY COATED	UNCOATED	
#4	2'-0"	1'-9"	2'-0"	1'-9"	2'-9"
#5	2'-6"	2'-2"	2'-6"	2'-2"	3'-5"
#6	3'-0"	2'-7"	3'-10"	2'-7"	4'-4"
#7	5'-3"	3'-6"			
#8	6'-10"	4'-7"			

PROJECT NO. **R-2707C**
CLEVELAND COUNTY
 STATION: **611+32.01 -L-**

STATE OF NORTH CAROLINA
 DEPARTMENT OF TRANSPORTATION
 RALEIGH
SUPERSTRUCTURE
BILL OF MATERIAL
(RIGHT LANE)



PLANS PREPARED BY:
PARSONS
 5540 CenterView Drive, Suite 217
 Raleigh, NC 27606-3386
 NC LICENSE No. F-0246
 FOR NORTH CAROLINA DEPARTMENT OF TRANSPORTATION

DRAWN BY: **K. E. LOFTON** DATE: **10-16**
 CHECKED BY: **A. D. SHAH** DATE: **10-16**
 DESIGN ENGINEER: **T. M. HARRIS** DATE: **10-16**

REVISIONS				SHEET No.	
No.	BY:	DATE:	No.	BY:	DATE:
1			3		
2			4		