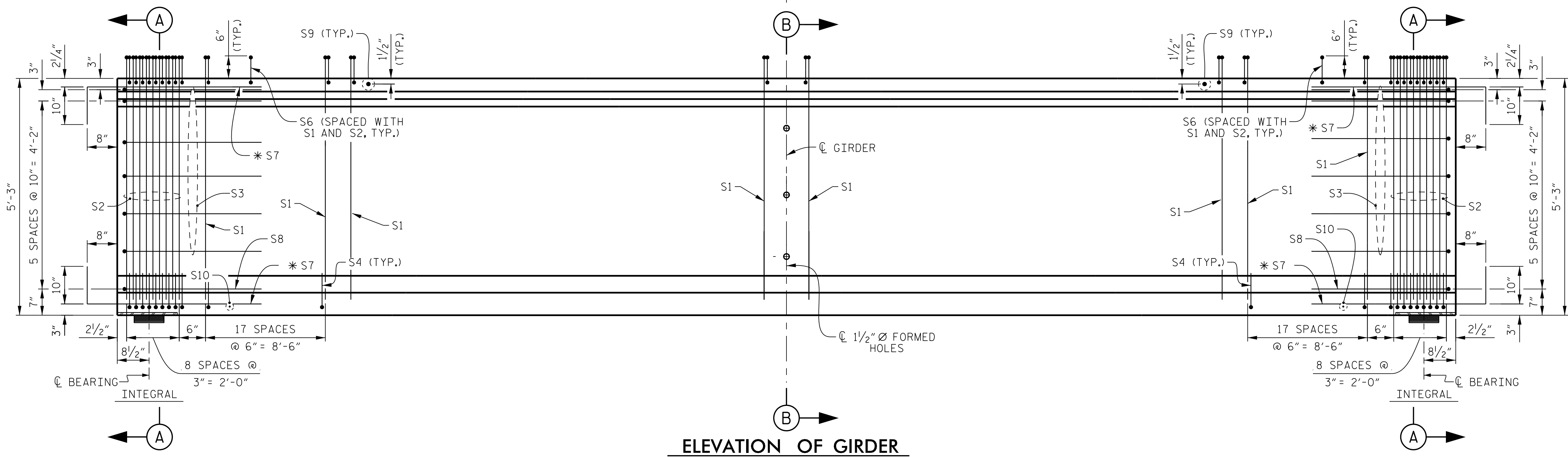


PLAN OF GIRDER



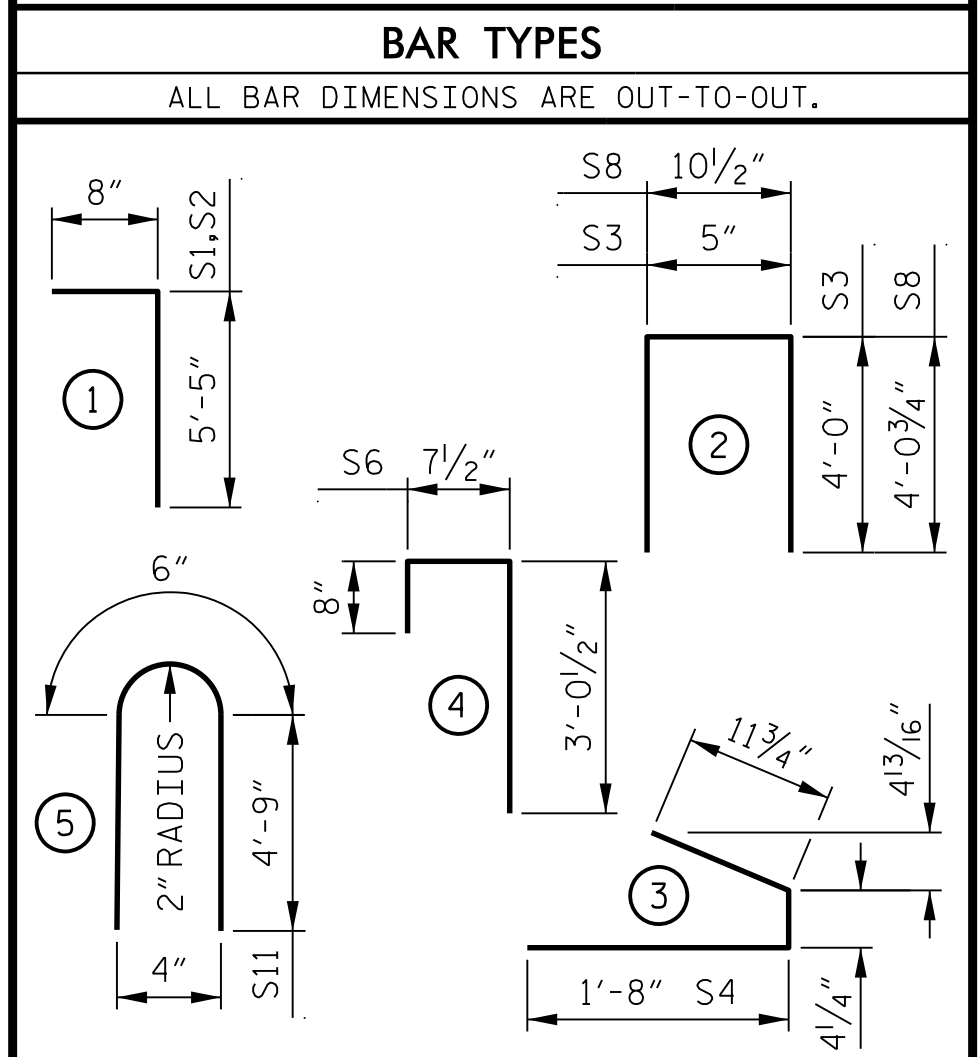
ELEVATION OF GIRDER

NOTES
 FOR SECTION A-A AND SECTION B-B, SEE SHEET 2 OF 3.
 FOR STRAND PATTERN, SEE SHEET 2 OF 3.
 FOR ADDITIONAL NOTES, SEE SHEET 3 OF 3.

AREA (SQUARE INCHES)	ULTIMATE STRENGTH (LBS. PER STRAND)	APPLIED PRESTRESS (LBS. PER STRAND)
0.217	58,600	43,950

REINFORCING STEEL FOR ONE GIRDER					
BAR	NUMBER	SIZE	TYPE	LENGTH	WEIGHT
S1	204	#4	1	6'-1"	829
S2	36	#5	1	6'-1"	228
S3	12	#4	2	8'-5"	67
S4	108	#4	3	3'-0"	216
S6	240	#5	4	4'-4"	1,085
*S7	40	#5	STR	3'-8"	153
S8	2	#5	2	9'-0"	19
S9	33	#5	STR	3'-3"	112
S10	2	#3	STR	1'-10"	1
S11	4	#5	5	10'-0"	42
S12	8	#4	STR	8'-0"	43

* NOTE: S7 BARS SHALL BE BENT BEFORE SHIPMENT. HEAT BENDING SHALL NOT BE ALLOWED.



QUANTITIES FOR ONE GIRDER			
	REINFORCING STEEL (LB.)	7,000 PSI CONCRETE (C.Y.)	0.6" Ø L.R. STRANDS (No.)
GIRDERS			
A1 THRU A4	2,795	17.7	30

GIRDERS REQUIRED			
LOCATION	NUMBER	LENGTH	TOTAL LENGTH
SPAN A	4	89'-2 3/4"	356.92'

PROJECT NO. **R-2707C**
CLEVELAND COUNTY
 STATION: **611+32.01 -L-**

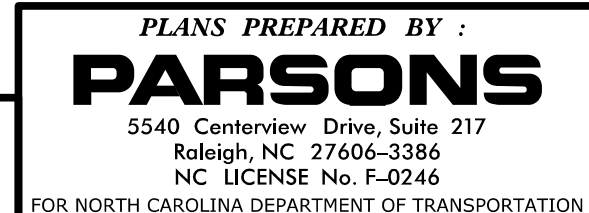
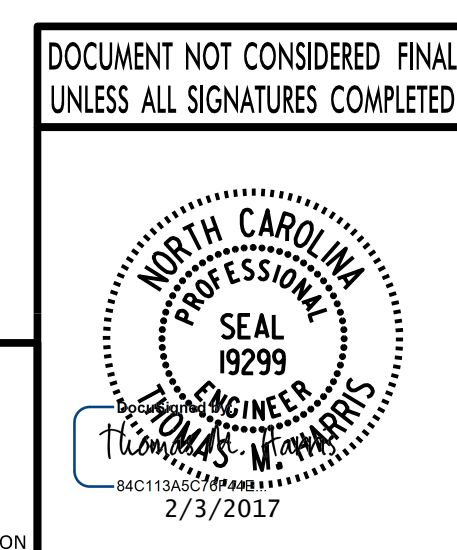
SHEET 1 OF 3

STATE OF NORTH CAROLINA
 DEPARTMENT OF TRANSPORTATION
 RALEIGH

STANDARD

63" PRESTRESSED CONCRETE MODIFIED BULB TEE GIRDER
(RIGHT LANE)

REVISIONS						SHEET No.
No.	BY:	DATE:	No.	BY:	DATE:	TOTAL SHEETS
1			3			25
2			4			



ASSEMBLED BY : K. E. LOFTON DATE : 10-16
 CHECKED BY : A. D. SHAH DATE : 10-16
 DRAWN BY : EEM 2/6/97 REV. 10/1/11 MAA/GM
 CHECKED BY : VAP 2/6/97 REV. 6/13 MAA/GM
 DATE: 10/20/07 DATE: 12-08-15 PM REV. 1/15 MAA/TMG

DRAWN BY : K. E. LOFTON DATE : 10-16
 CHECKED BY : A. D. SHAH DATE : 10-16
 DESIGN ENGINEER : T. M. HARRIS DATE : 10-16