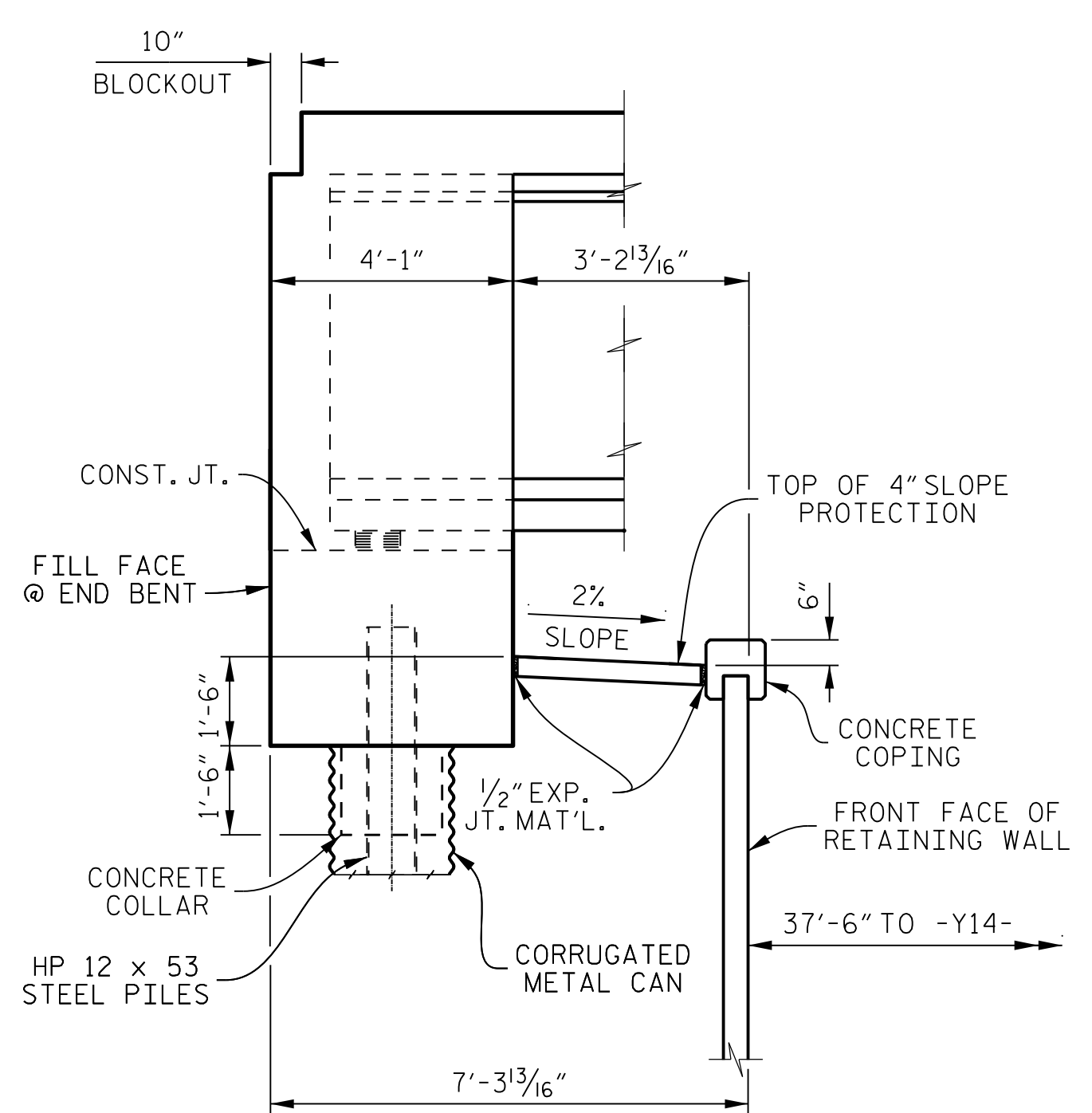
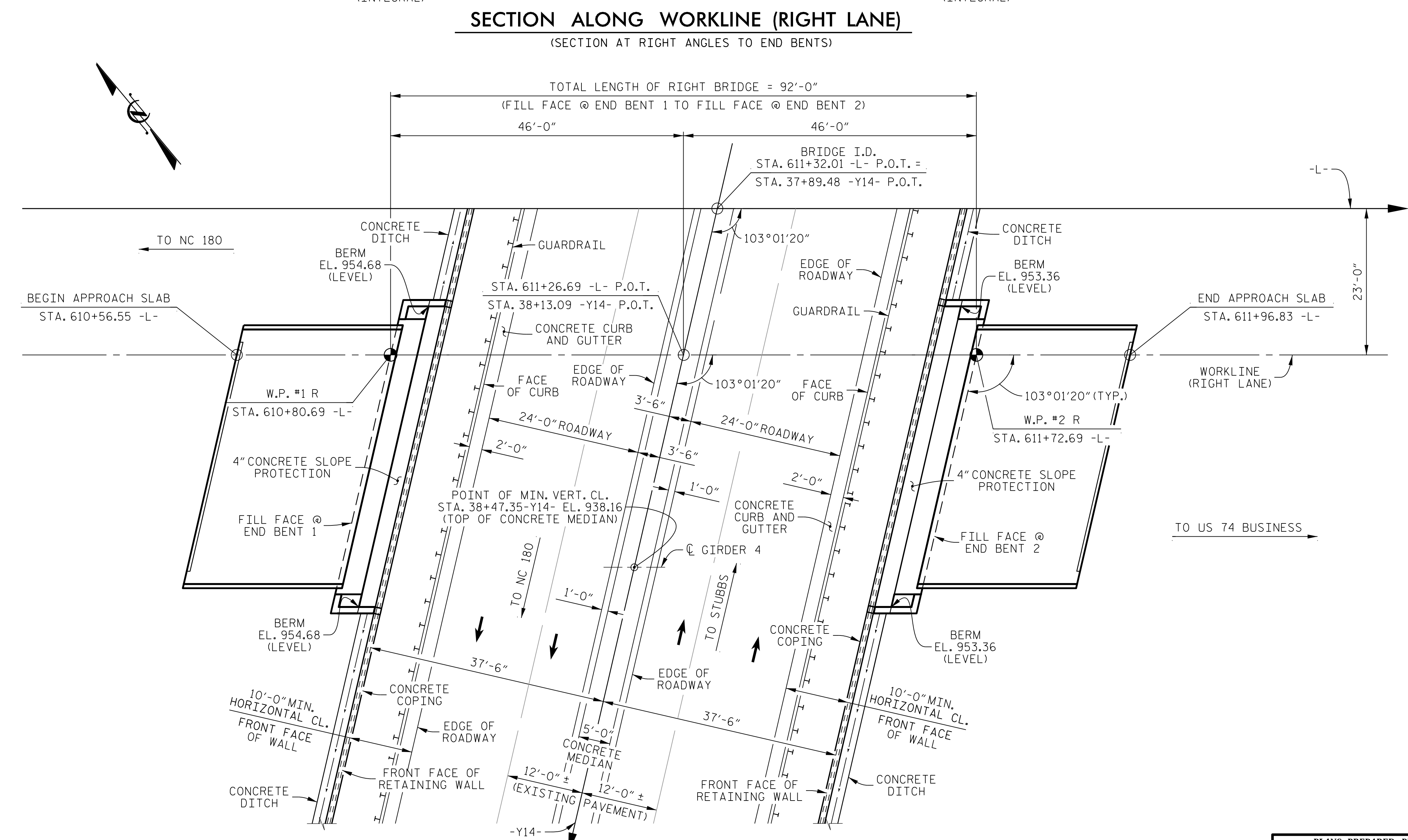


NOTE
FOR NOTES, SEE SHEET 3 OF 3.

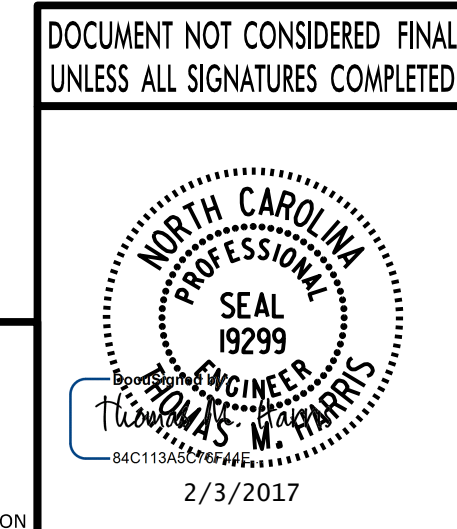


PROJECT NO. **R-2707C**
CLEVELAND COUNTY
STATION: **611+32.01 -L-**
37+89.48 -Y14-
SHEET 1 OF 3 BRIDGE No. 475

STATE OF NORTH CAROLINA
DEPARTMENT OF TRANSPORTATION
RALEIGH

GENERAL DRAWING
**BRIDGE OVER NC 150 (-Y14-) ON
SHELBY BYPASS (-L-) BETWEEN
NC 180 AND US 74 BUSINESS
(RIGHT LANE)**

REVISIONS						SHEET No. S10-1
No.	BY:	DATE:	No.	BY:	DATE:	
1			3			TOTAL SHEETS 25
2			4			25



PLANS PREPARED BY:
PARSONS
5540 Centerview Drive, Suite 217
Raleigh, NC 27606-3386
NC LICENSE No. F-0246

DRAWN BY: **K. E. LOFTON** DATE: **10-16**
CHECKED BY: **A. D. SHAH** DATE: **10-16**
DESIGN ENGINEER: **T. M. HARRIS** DATE: **10-16**

METAL CANS AND PILES NOT SHOWN IN PLAN VIEW.

FILE: I:\2707C_struct\ch\ch\plans - smc\final\410_001_R2707C_smc_gbf_S10-1.dgn
DATE: 10/20/17 12:47:53 PM