

NOTES

STIRRUPS AND "U" BARS IN CAP MAY BE SHIFTED AS NECESSARY TO CLEAR #4V2 BARS.

THE TOP SURFACE OF THE END BENT CAP UNDER THE INTEGRAL END BENT DIAPHRAGM, EXCEPT THE BEARING AREA, SHALL BE RAKED TO A DEPTH OF 1/4".

FOR PILE SPLICE DETAILS, SEE SHEET 3 OF 3.

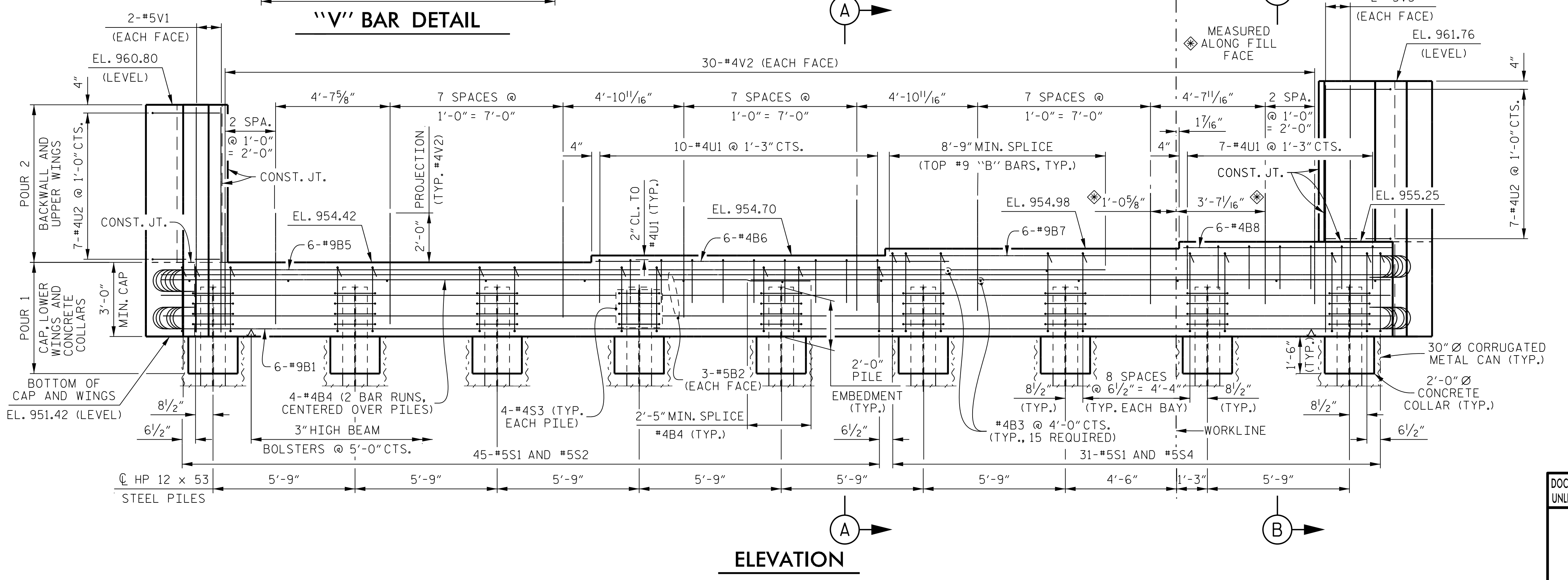
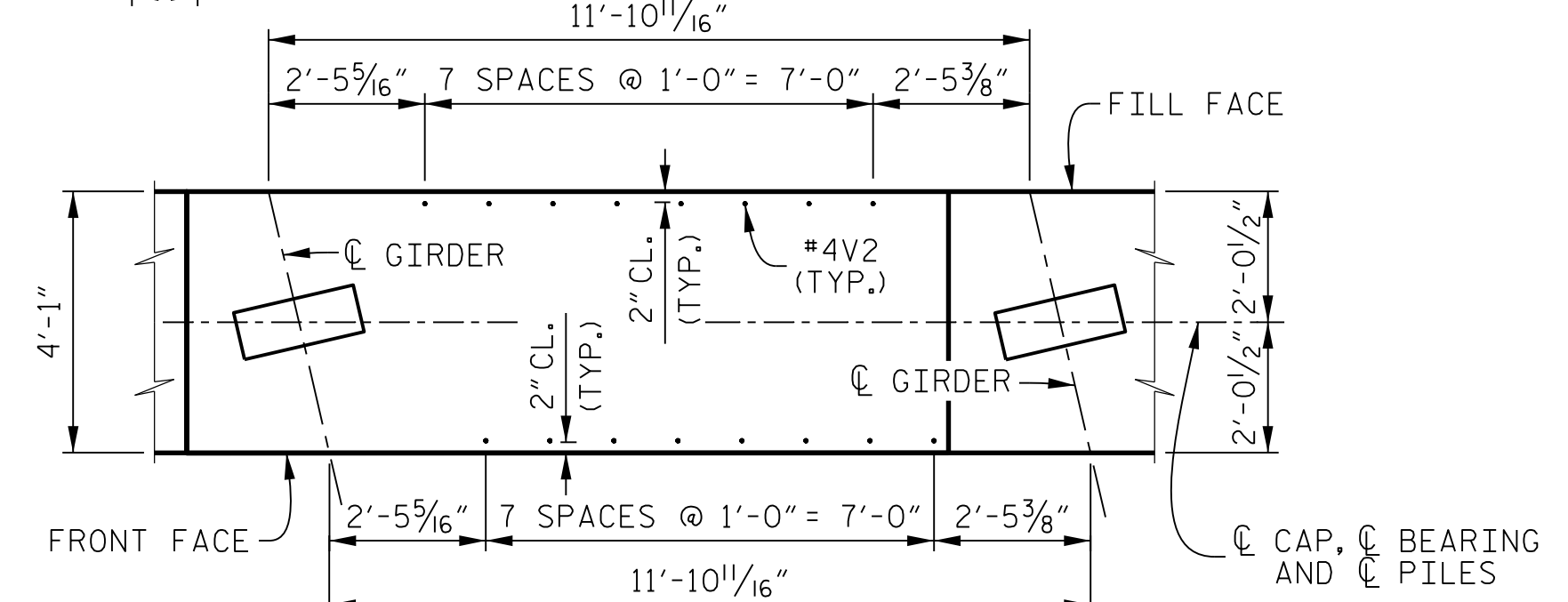
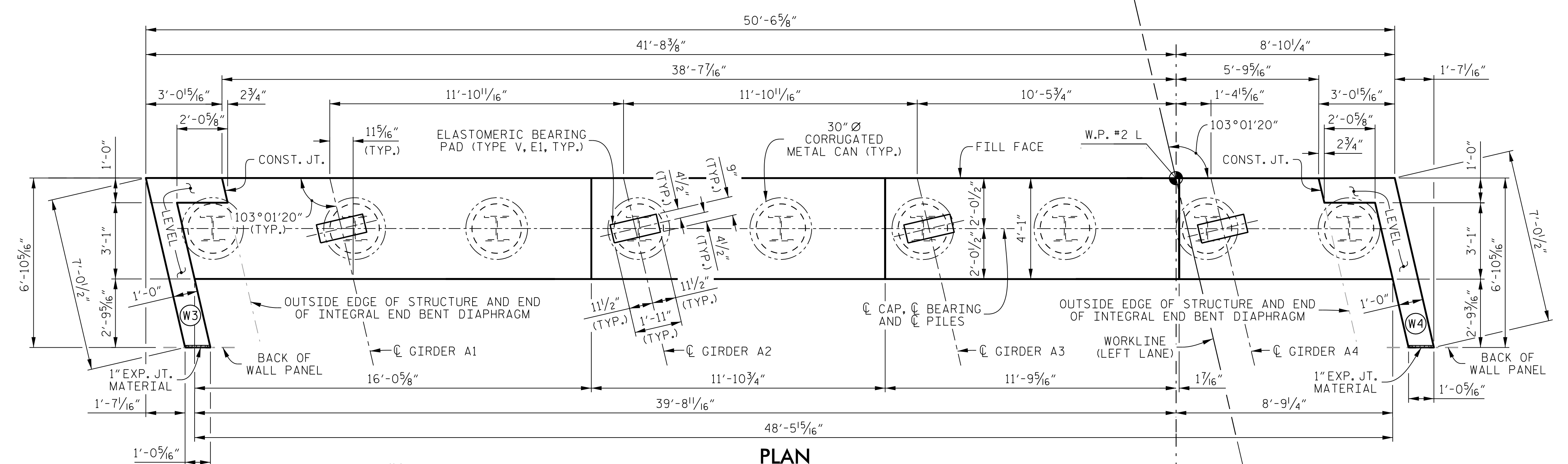
FOR TEMPORARY DRAINAGE AT END BENT DETAIL, SEE SHEET 3 OF 3.

FOR SECTION A-A AND SECTION B-B, SEE SHEET 3 OF 3.

FOR INTEGRAL END BENT DIAPHRAGM DETAILS, SEE "TYPICAL SECTION" AND "PLAN OF SPAN" SHEETS.

THE COST TO FURNISH AND INSTALL THE 30" Ø CORRUGATED METAL CANS SHALL BE INCLUDED IN THE CONTRACT PRICE FOR MSE RETAINING WALL.

WING W3 AND WING W4 DETAILS ARE BASED ON A 5/2" WALL PANEL THICKNESS AND USING DOWELS FOR THE COPING. CONTRACTOR MAY ADJUST WINGS SLIGHTLY AS NECESSARY, BASED ON APPROVED MSE WALL SHOP DRAWINGS.



PROJECT NO. R-2707C
 CLEVELAND COUNTY
 STATION: 611+32.01 -L-

SHEET 1 OF 3

STATE OF NORTH CAROLINA
 DEPARTMENT OF TRANSPORTATION
 RALEIGH

**SUBSTRUCTURE
 END BENT 2
 (LEFT LANE)**

DOCUMENT NOT CONSIDERED FINAL
 UNLESS ALL SIGNATURES COMPLETED

**NORTH CAROLINA
 PROFESSIONAL
 SEAL
 19299
 ENGINEER
 T. M. HARRIS**

PLANS PREPARED BY:
PARSONS
 5540 Centerview Drive, Suite 217
 Raleigh, NC 27606-3386
 NC LICENSE No. F-0246

DRAWN BY : K. E. LOFTON DATE : 6-16
 CHECKED BY : A. D. SHAH DATE : 10-16
 DESIGN ENGINEER : T. M. HARRIS DATE : 10-16

REVISIONS						SHEET No.	
No.	BY:	DATE:	No.	BY:	DATE:	TOTAL SHEETS	
1			3			25	
2			4				

FILE: j:\2707c\structures\structures\plans - smc\final\409_039_R2707C_smc_eb21_S9-20.dgn
 DATE: 10/20/17 12:47:41 PM