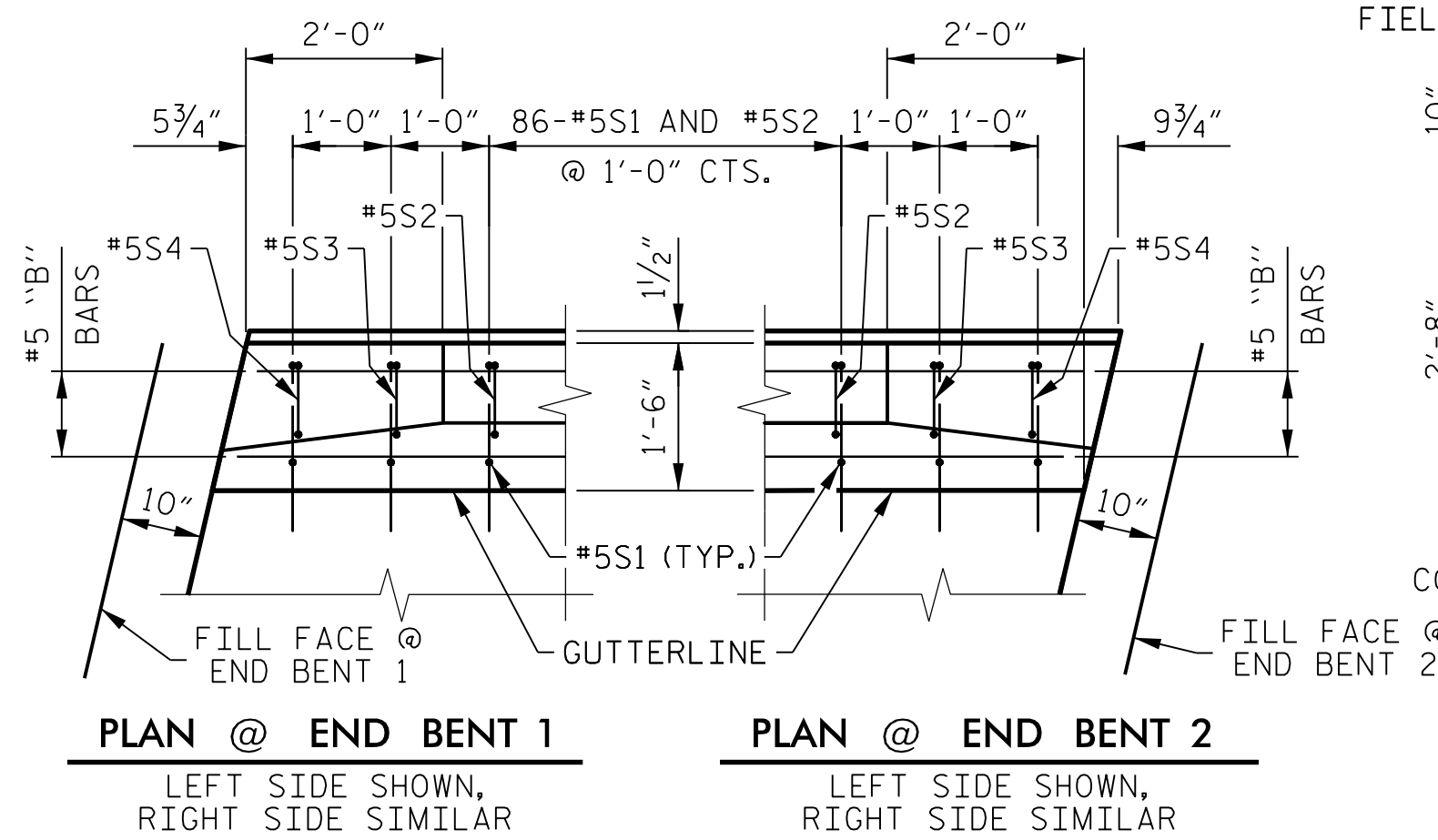
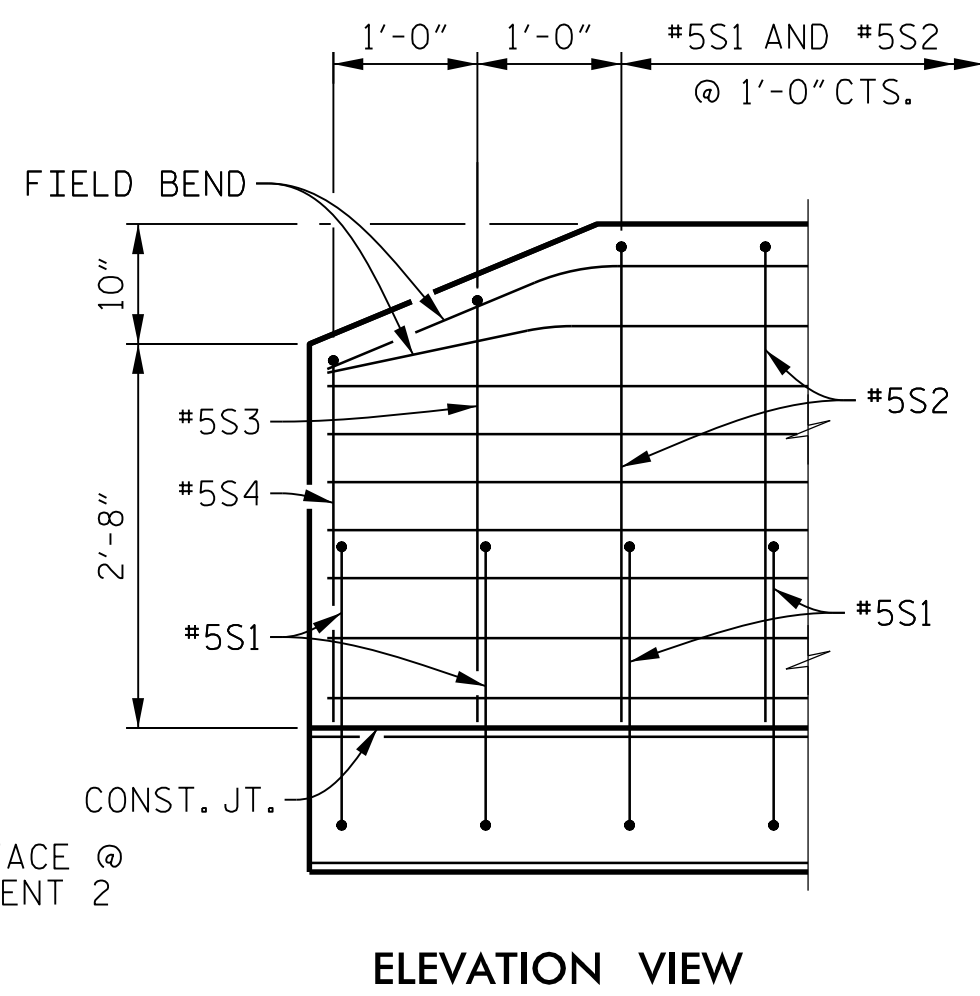


SPLICE LENGTH		
BAR	SIZE	LENGTH
B1	#5	3'-5"

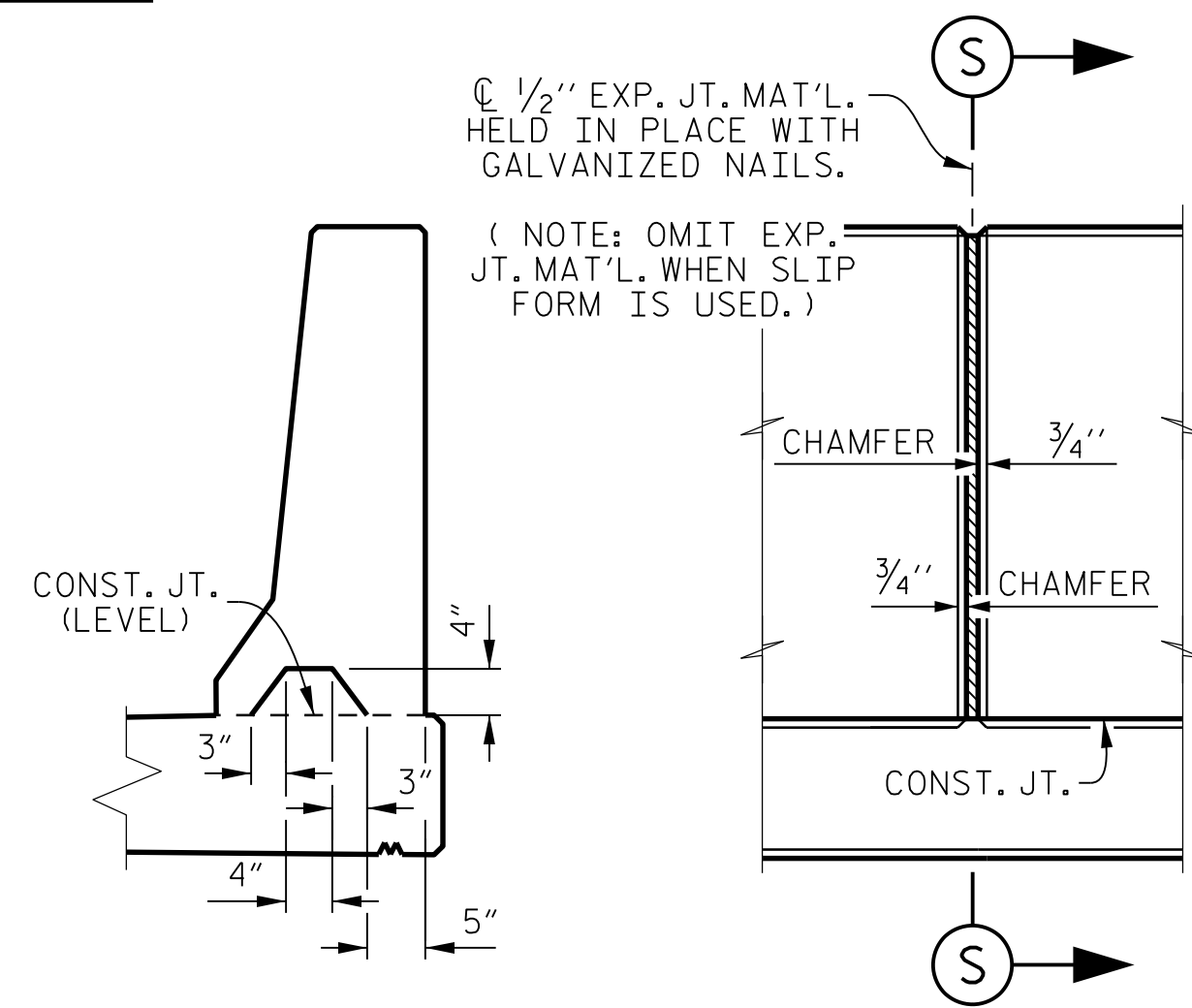
PLAN OF BARRIER RAIL



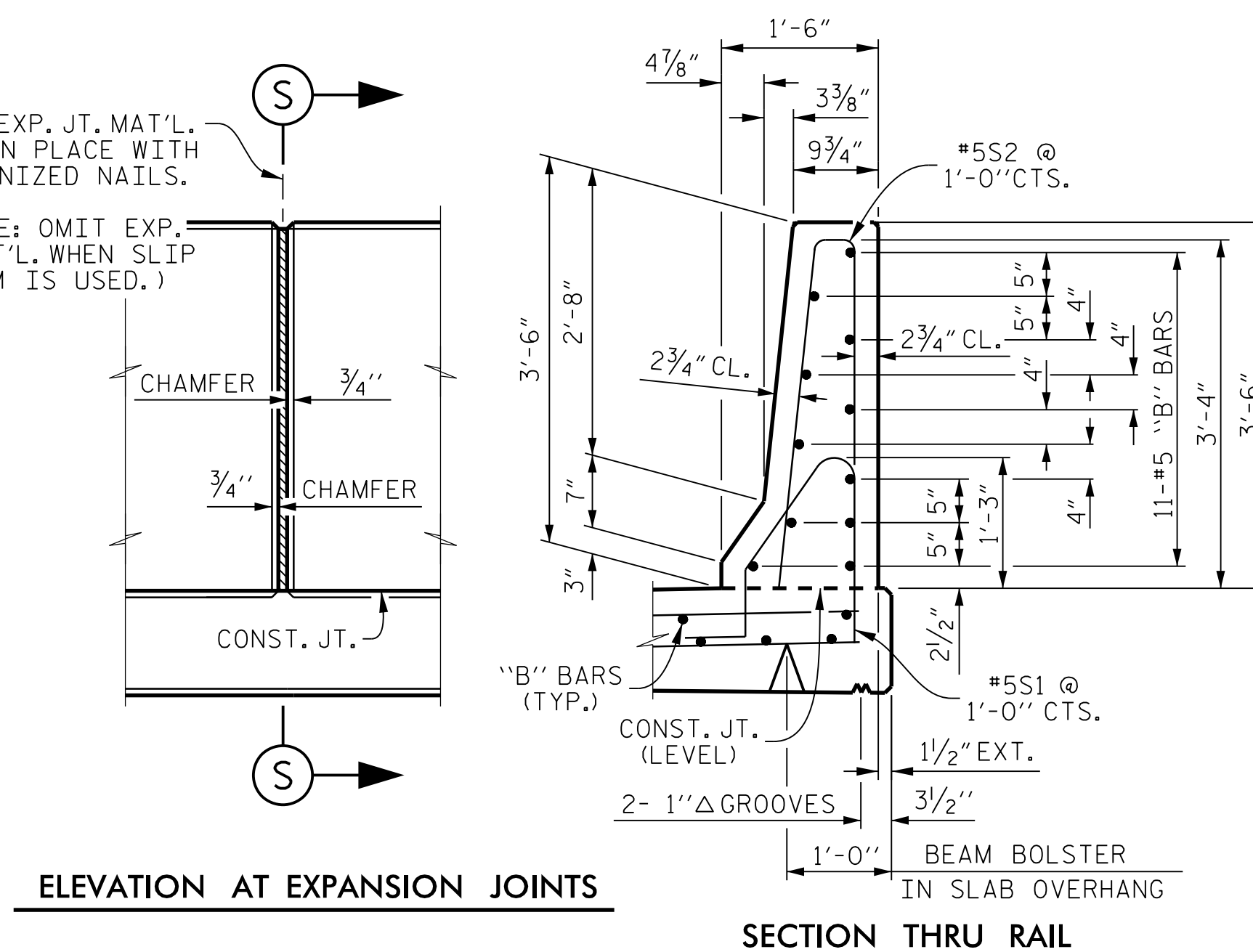
END OF RAIL DETAILS



ELEVATION VIEW

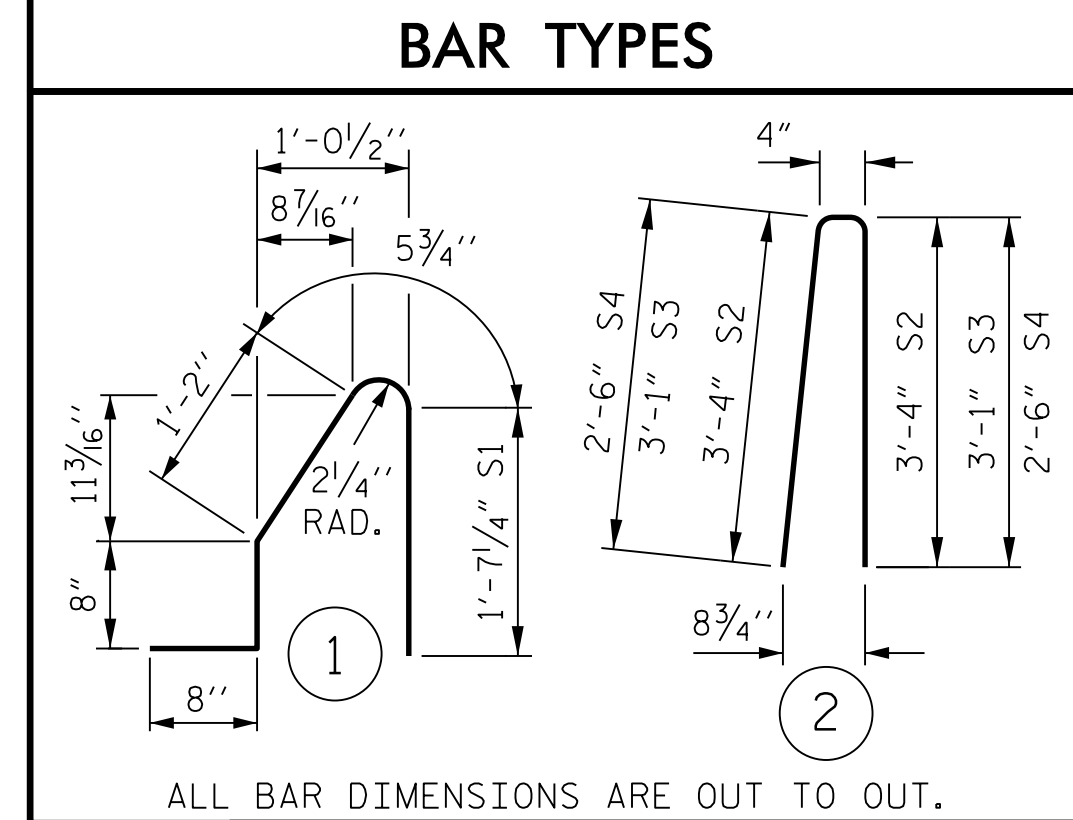


SECTION S-S
AT DAM IN OPEN JOINT
(THIS IS TO BE USED ONLY
WHEN SLIP FORM IS USED)



ELEVATION AT EXPANSION JOINTS

SECTION THRU RAIL



ALL BAR DIMENSIONS ARE OUT TO OUT.

BILL OF MATERIAL					
FOR CONCRETE BARRIER RAIL ONLY					
BAR No.	SIZE	TYPE	LENGTH	WEIGHT	
* B1	88	#5	STR 12'-10"	1,178	
* B2	44	#5	STR 22'-1"	1,013	
* S1	180	#5	1 4'-7"	860	
* S2	172	#5	2 7'-0"	1,256	
* S3	4	#5	2 6'-6"	27	
* S4	4	#5	2 5'-4"	22	
* EPOXY COATED REINFORCING STEEL				4,356	LBS.
CLASS "AA" CONCRETE				24.5	CU. YDS.
CONCRETE BARRIER RAIL 180.58 LIN. FT.					

NOTES

THE BARRIER RAIL IN SPAN "A" SHALL NOT BE CAST UNTIL ALL SLAB CONCRETE IN THE SPAN HAS BEEN CAST AND HAS REACHED A MINIMUM COMPRESSIVE STRENGTH OF 3,000 PSI.

ALL REINFORCING STEEL IN BARRIER RAILS SHALL BE EPOXY COATED.

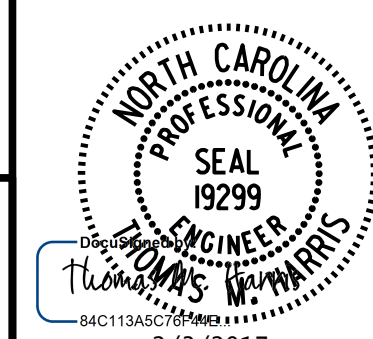
GROOVED CONTRACTION JOINTS, 1/2" IN DEPTH, SHALL BE TOOLED IN ALL EXPOSED FACES OF THE BARRIER RAIL AND IN ACCORDANCE WITH ARTICLE 825-10(B) OF THE STANDARD SPECIFICATIONS. THE CONTRACTION JOINT SHALL BE LOCATED AT EACH THIRD POINT BETWEEN BARRIER RAIL EXPANSION JOINTS. ONLY ONE CONTRACTION JOINT IS REQUIRED AT MIDPOINT OF BARRIER RAIL SEGMENTS LESS THAN 20 FEET IN LENGTH AND NO CONTRACTION JOINTS ARE REQUIRED FOR THOSE SEGMENTS LESS THAN 10 FEET IN LENGTH.

THE #5S1 AND #5S2 BARS MAY BE SHIFTED AS NECESSARY TO CLEAR EXPANSION JOINTS IN RAIL.

PROJECT NO. **R-2707C**
CLEVELAND COUNTY
 STATION: **611+32.01 -L-**

STATE OF NORTH CAROLINA
 DEPARTMENT OF TRANSPORTATION
 RALEIGH
STANDARD
CONCRETE BARRIER RAIL
(LEFT LANE)

DOCUMENT NOT CONSIDERED FINAL
 UNLESS ALL SIGNATURES COMPLETED



PLANS PREPARED BY:
PARSONS
 5540 CenterView Drive, Suite 217
 Raleigh, NC 27606-3386
 NC LICENSE No. F-0246

DRAWN BY: **K. E. LOFTON** DATE: **6-16**
 CHECKED BY: **A. D. SHAH** DATE: **10-16**
 DESIGN ENGINEER: **T. M. HARRIS** DATE: **10-16**

ASSEMBLED BY: **K. E. LOFTON** DATE: **6-16**
 CHECKED BY: **A. D. SHAH** DATE: **10-16**
 DRAWN BY: **ARB 5/87** REV. 10/1/11 MAA/GM
 CHECKED BY: **SJD 9/87** REV. 7/12 MAA/GM
 DATE: **10/20/07** REV. 6/13 MAA/GM

REVISIONS					
No.	BY:	DATE:	No.	BY:	DATE:
1			3		
2			4		

SHEET No. **S9-14**
 TOTAL SHEETS **25**