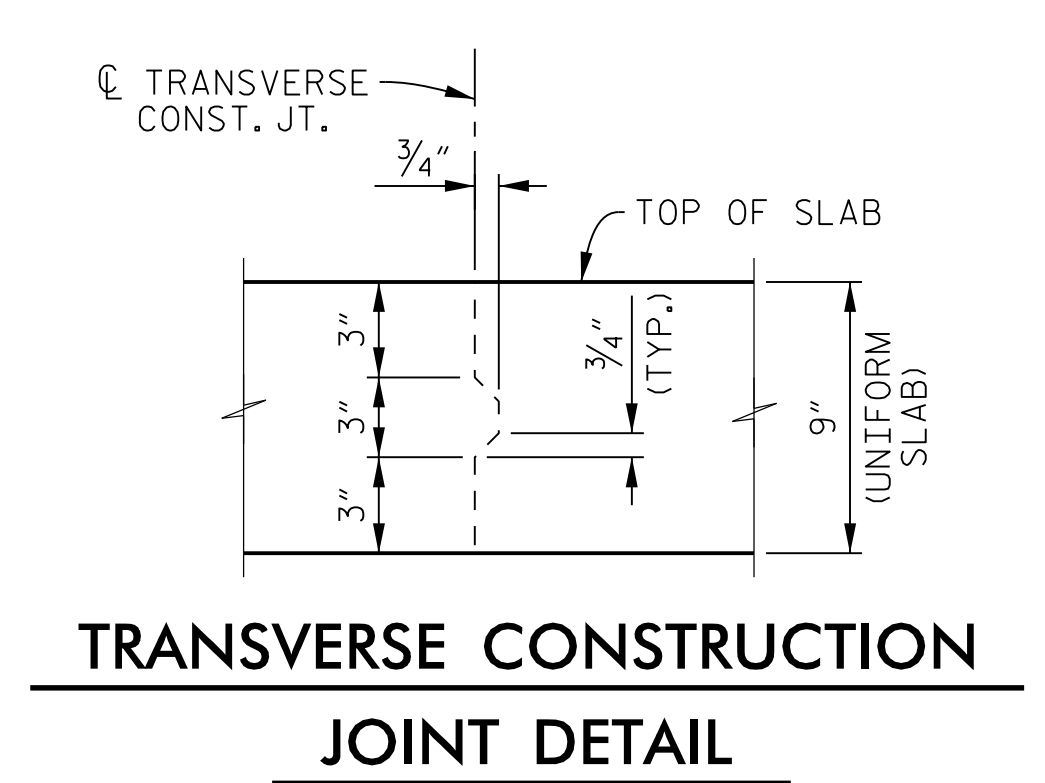
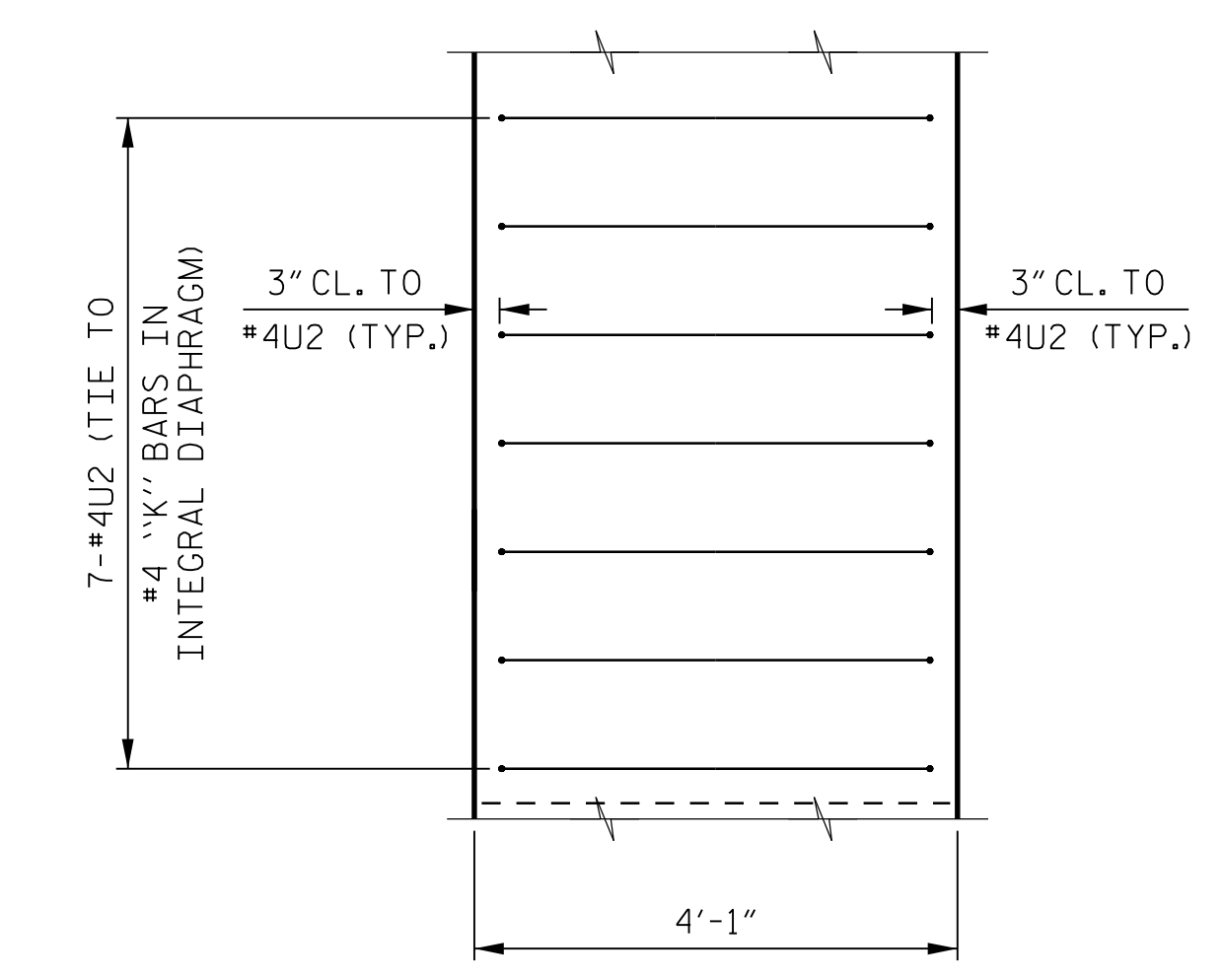


TYPICAL SECTION AT INTERMEDIATE STEEL DIAPHRAGMS

FOR INTERMEDIATE STEEL DIAPHRAGM DETAILS, SEE "INTERMEDIATE STEEL DIAPHRAGMS FOR 63" MODIFIED BULB TEE PRESTRESSED CONCRETE GIRDERS" SHEET.



TRANSVERSE CONSTRUCTION JOINT DETAIL
 REINFORCING STEEL IN SLAB NOT SHOWN. LONGITUDINAL REINFORCING STEEL SHALL BE CONTINUOUS THROUGH JOINT.



END VIEW OF INTEGRAL DIAPHRAGM

PROJECT NO. R-2707C
CLEVELAND COUNTY
 STATION: 611+32.01 -L-

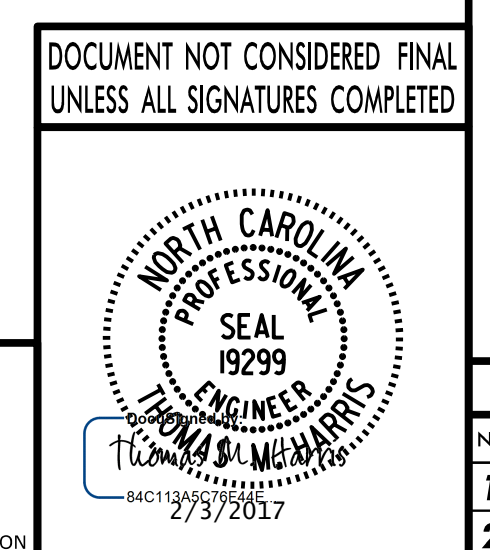
SHEET 2 OF 2

STATE OF NORTH CAROLINA
 DEPARTMENT OF TRANSPORTATION
 RALEIGH

SUPERSTRUCTURE

TYPICAL SECTION

(LEFT LANE)



PLANS PREPARED BY:
PARSONS
 5540 CenterView Drive, Suite 217
 Raleigh, NC 27606-3386
 NC LICENSE No. F-0246
 FOR NORTH CAROLINA DEPARTMENT OF TRANSPORTATION

DRAWN BY :	K. E. LOFTON	DATE :	6-16
CHECKED BY :	T. M. HARRIS	DATE :	10-16
DESIGN ENGINEER :	T. M. HARRIS	DATE :	10-16

REVISIONS				SHEET No.	
No.	BY:	DATE:	No.	BY:	DATE:
1			3		
2			4		

TOTAL SHEETS: 25
 STR. #9

FILE: j:\2707c\structures\plans - smc\final\409_011_R2707C_smc_162_59-d.dgn
 DATE: 10/20/17 12:47:14 PM