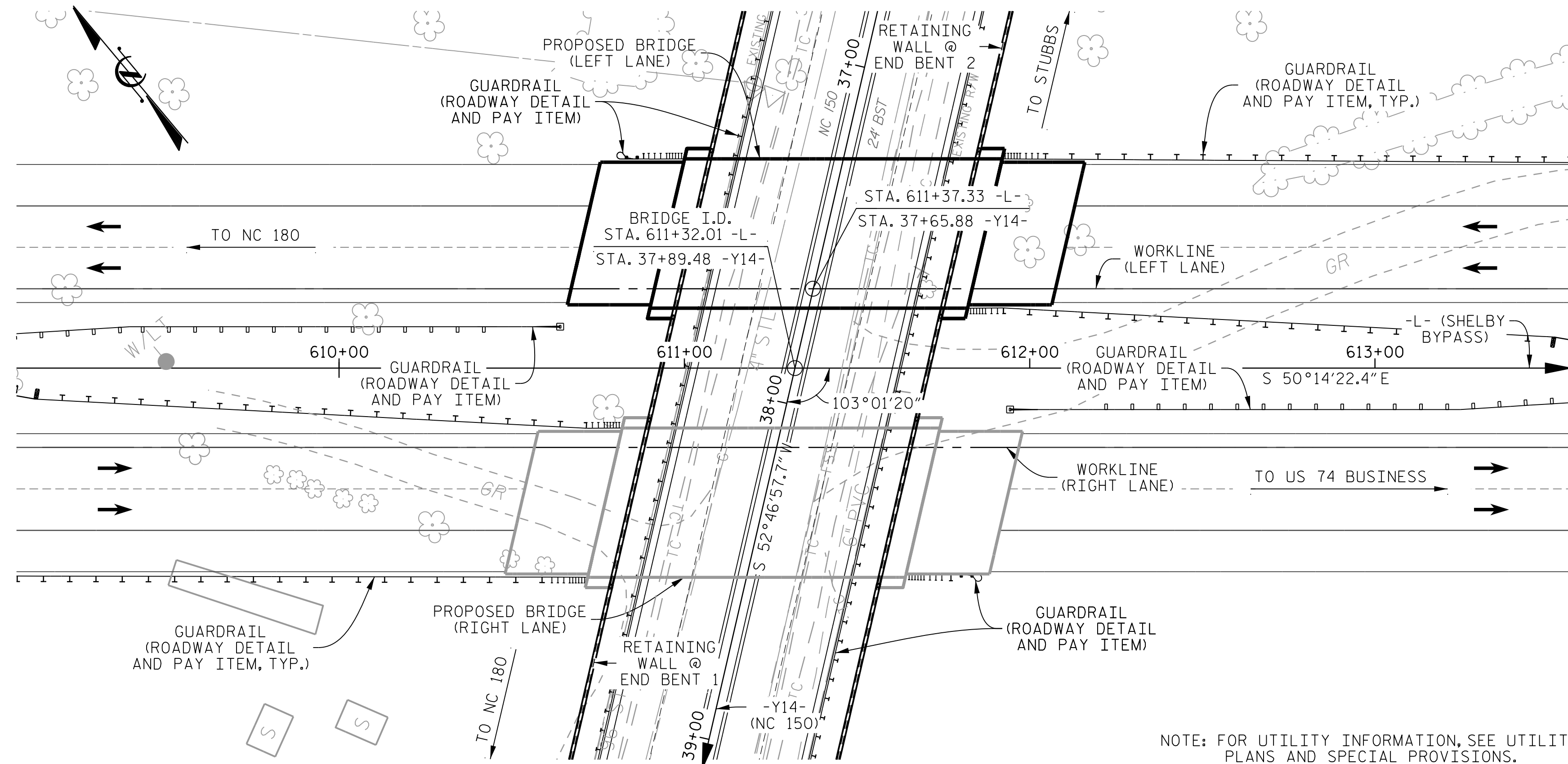


BENCHMARK: #27 - CHISELED SQUARE WITH "X" ON THE NORTH EAST WING WALL OF BRIDGE THAT CROSSES RAILROAD 102.86' RIGHT OF STA. 595+20.66 -L- EL. 944.58 N 579370.5 E 1255991.6



LOCATION SKETCH

NOTES

ASSUMED LIVE LOAD = HL 93 OR ALTERNATE LOADING.  
 THIS BRIDGE HAS BEEN DESIGNED IN ACCORDANCE WITH THE AASHTO LRFD BRIDGE DESIGN SPECIFICATIONS.  
 THIS BRIDGE IS LOCATED IN SEISMIC ZONE 1.  
 FOR OTHER DESIGN DATA AND GENERAL NOTES, SEE SHEET SN.  
 THE CLASS AA CONCRETE IN THE BRIDGE DECK SHALL CONTAIN FLY ASH OR GROUND GRANULATED BLAST FURNACE SLAG AT THE SUBSTITUTION RATE SPECIFIED IN ARTICLE 1024-1 AND IN ACCORDANCE WITH ARTICLES 1024-5 AND 1024-6 OF THE STANDARD SPECIFICATIONS. NO PAYMENT WILL BE MADE FOR THIS SUBSTITUTION AS IT IS CONSIDERED INCIDENTAL TO THE COST OF THE REINFORCED CONCRETE DECK SLAB.  
 REMOVABLE FORMS MAY BE USED IN LIEU OF METAL STAY-IN-PLACE FORMS IN ACCORDANCE WITH ARTICLE 420-3 OF THE STANDARD SPECIFICATIONS.

NEEDLE BEAMS WILL NOT BE ALLOWED UNLESS OTHERWISE CALLED FOR ON THE PLANS OR APPROVED BY THE ENGINEER.  
 FOR SUBMITTAL OF WORKING DRAWINGS, SEE SPECIAL PROVISIONS.  
 FOR GROUT FOR STRUCTURES, SEE SPECIAL PROVISIONS.  
 FOR EROSION CONTROL MEASURES, SEE EROSION CONTROL PLANS.  
 FOR FALSEWORK AND FORMWORK, SEE SPECIAL PROVISIONS.  
 FOR CRANE SAFETY, SEE SPECIAL PROVISIONS.  
 FOR PLACING LOAD ON STRUCTURE MEMBERS, SEE SPECIAL PROVISIONS.  
 FOR MAINTENANCE AND PROTECTION OF TRAFFIC BENEATH PROPOSED STRUCTURE, SEE SPECIAL PROVISIONS.

TOTAL BILL OF MATERIAL

	REINFORCED CONCRETE DECK SLAB	GROOVING BRIDGE FLOORS	CLASS A CONCRETE	BRIDGE APPROACH SLABS	REINFORCING STEEL	MODIFIED 63" PRESTRESSED CONCRETE GIRDERS		PILE DRIVING EQUIPMENT SETUP FOR HP 12 x 53 STEEL PILES	HP 12 x 53 STEEL PILES		PDA TESTING	CONCRETE BARRIER RAIL	4" SLOPE PROTECTION	ELASTOMERIC BEARINGS
	SQ. FT.	SQ. FT.	CU. YDS.	LUMP SUM	LBS.	No.	LIN. FT.	EACH	No.	LIN. FT.	EACH	LIN. FT.	SQ. YD.	LUMP SUM
SUPERSTRUCTURE	3,979	5,505		LUMP SUM		4	356.92					180.58		LUMP SUM
END BENT 1			32.2		5,289			9	9	700.0			14	
END BENT 2			32.2		5,289			9	9	675.0	1		14	
TOTAL	3,979	5,505	64.4	LUMP SUM	10,578	4	356.92	18	18	1,375.0	1	180.58	28	LUMP SUM

PROJECT NO. R-2707C  
CLEVELAND COUNTY  
 STATION: 611+32.01 -L-

SHEET 3 OF 3

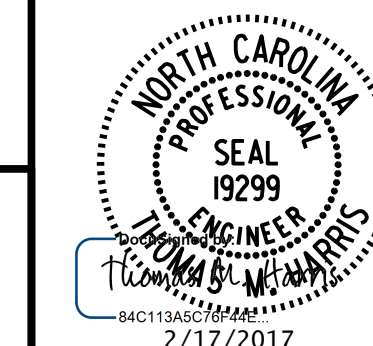
STATE OF NORTH CAROLINA  
 DEPARTMENT OF TRANSPORTATION  
 RALEIGH

GENERAL DRAWING

BRIDGE OVER NC 150 (-Y14-) ON SHELBY BYPASS (-L-) BETWEEN NC 180 AND US 74 BUSINESS (LEFT LANE)

REVISIONS						SHEET No.
No.	BY:	DATE:	No.	BY:	DATE:	S9-3
1			3			TOTAL SHEETS
2			4			25

DOCUMENT NOT CONSIDERED FINAL UNLESS ALL SIGNATURES COMPLETED



PLANS PREPARED BY:  
**PARSONS**  
 5540 CenterView Drive, Suite 217  
 Raleigh, NC 27606-3386  
 NC LICENSE No. F-0246  
 FOR NORTH CAROLINA DEPARTMENT OF TRANSPORTATION

DRAWN BY: K. E. LOFTON DATE: 6-16  
 CHECKED BY: A. D. SHAH DATE: 10-16  
 DESIGN ENGINEER: T. M. HARRIS DATE: 10-16