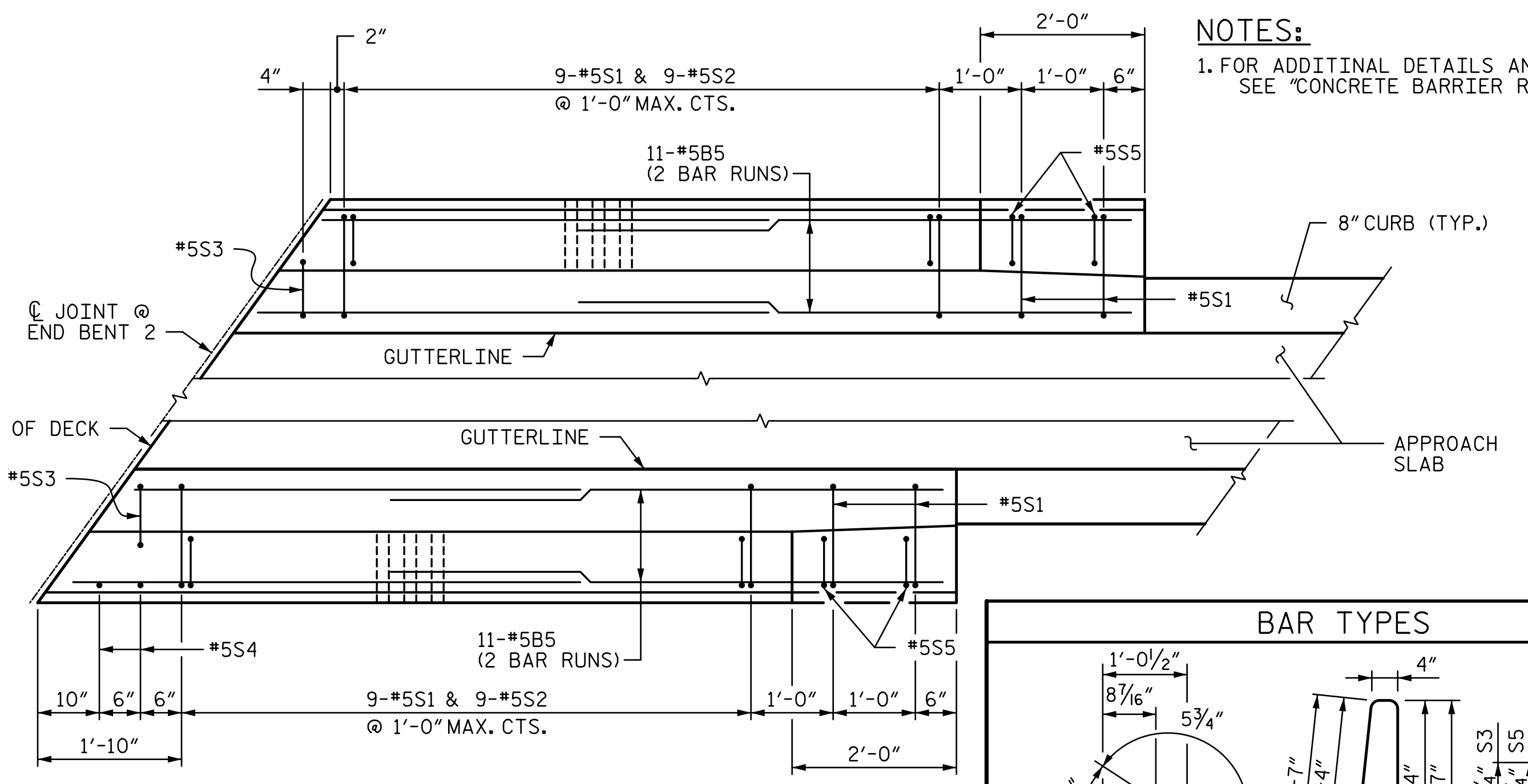
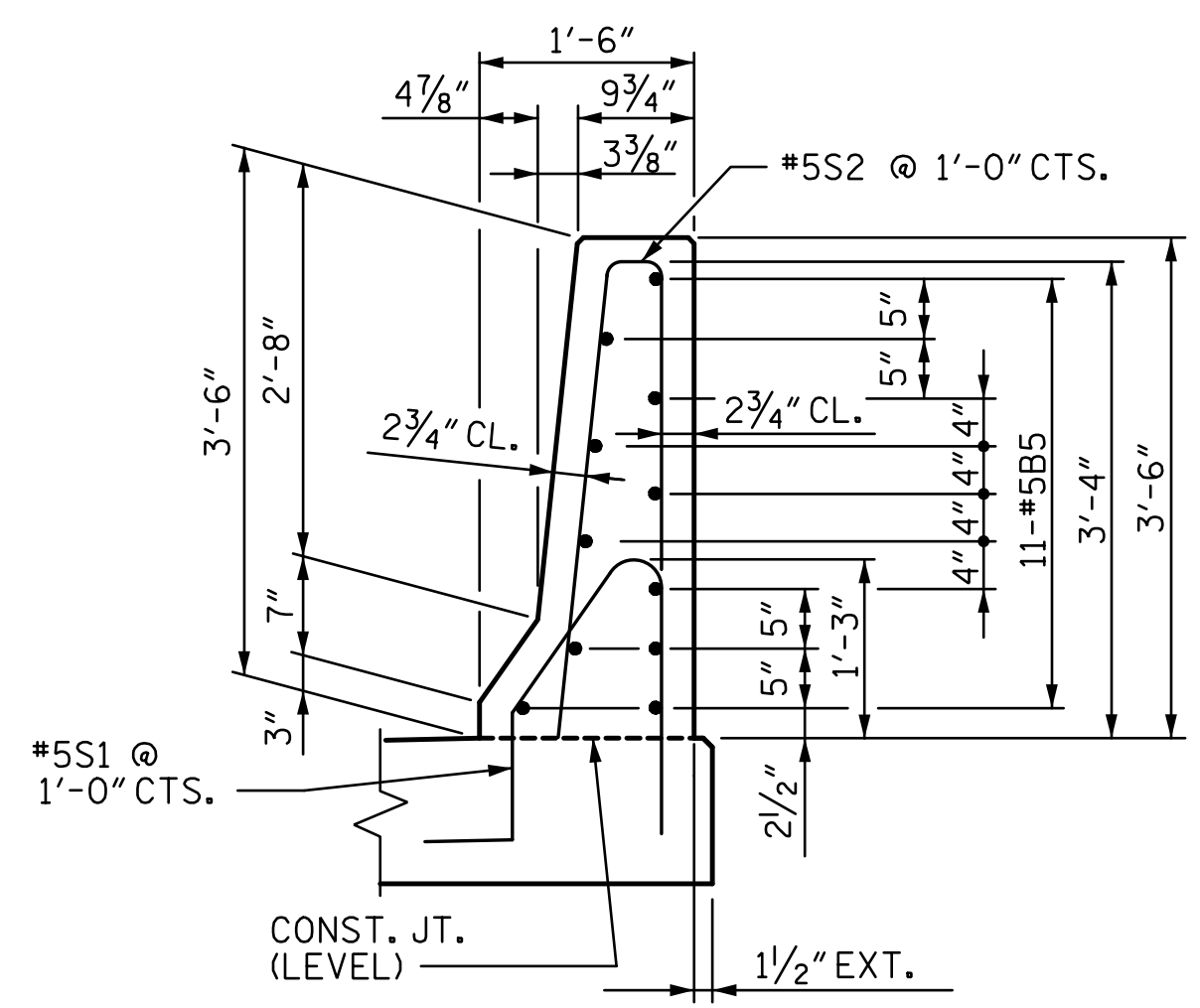


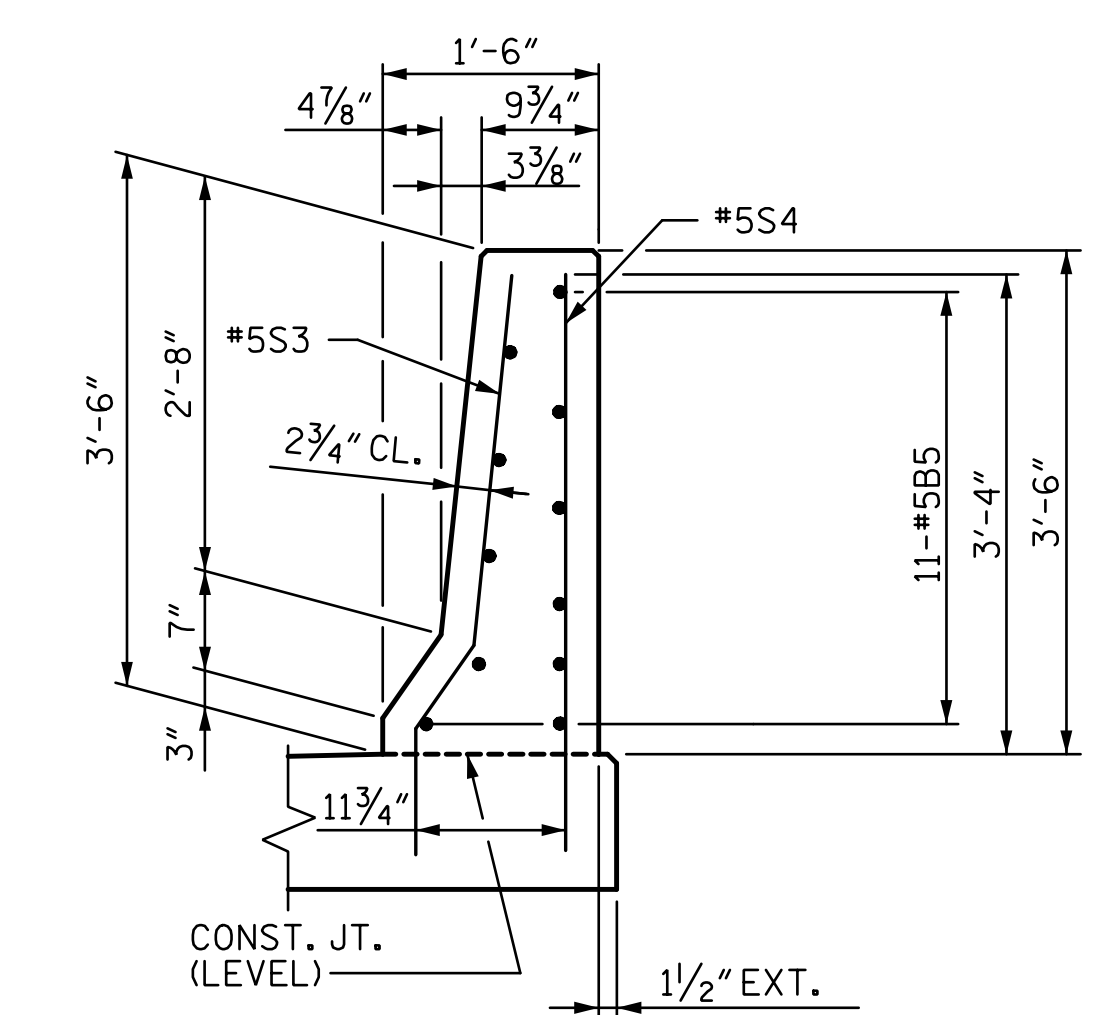
END BENT 1



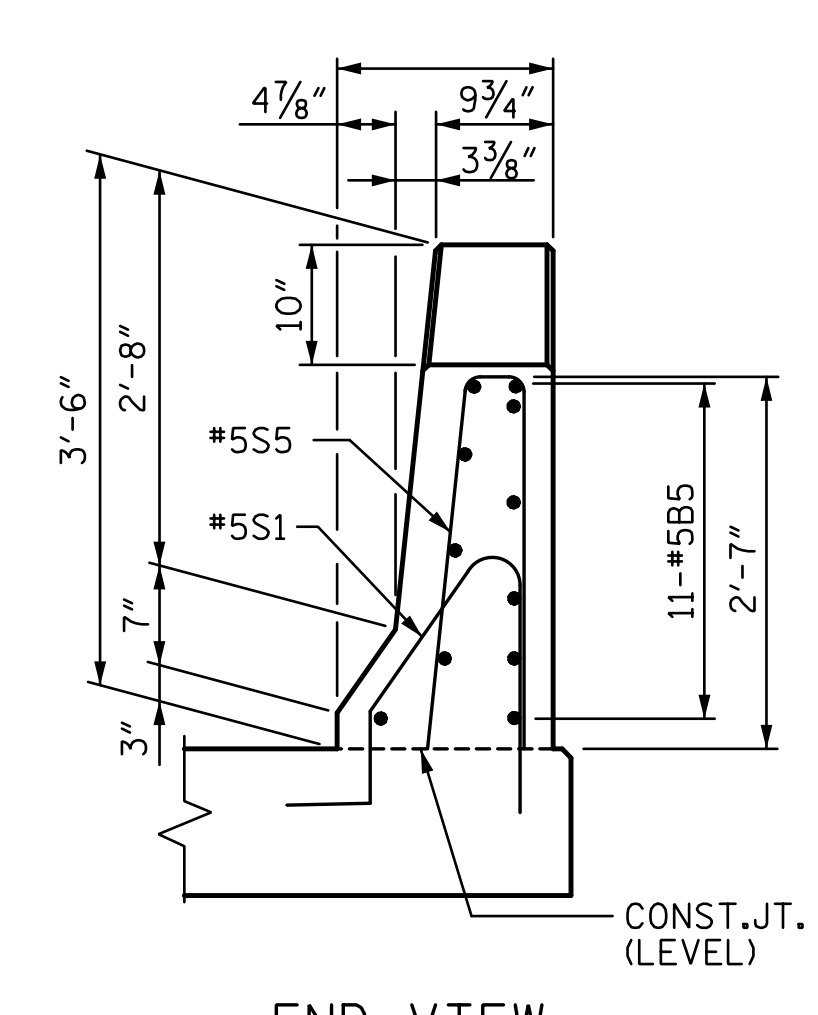
END BENT 2



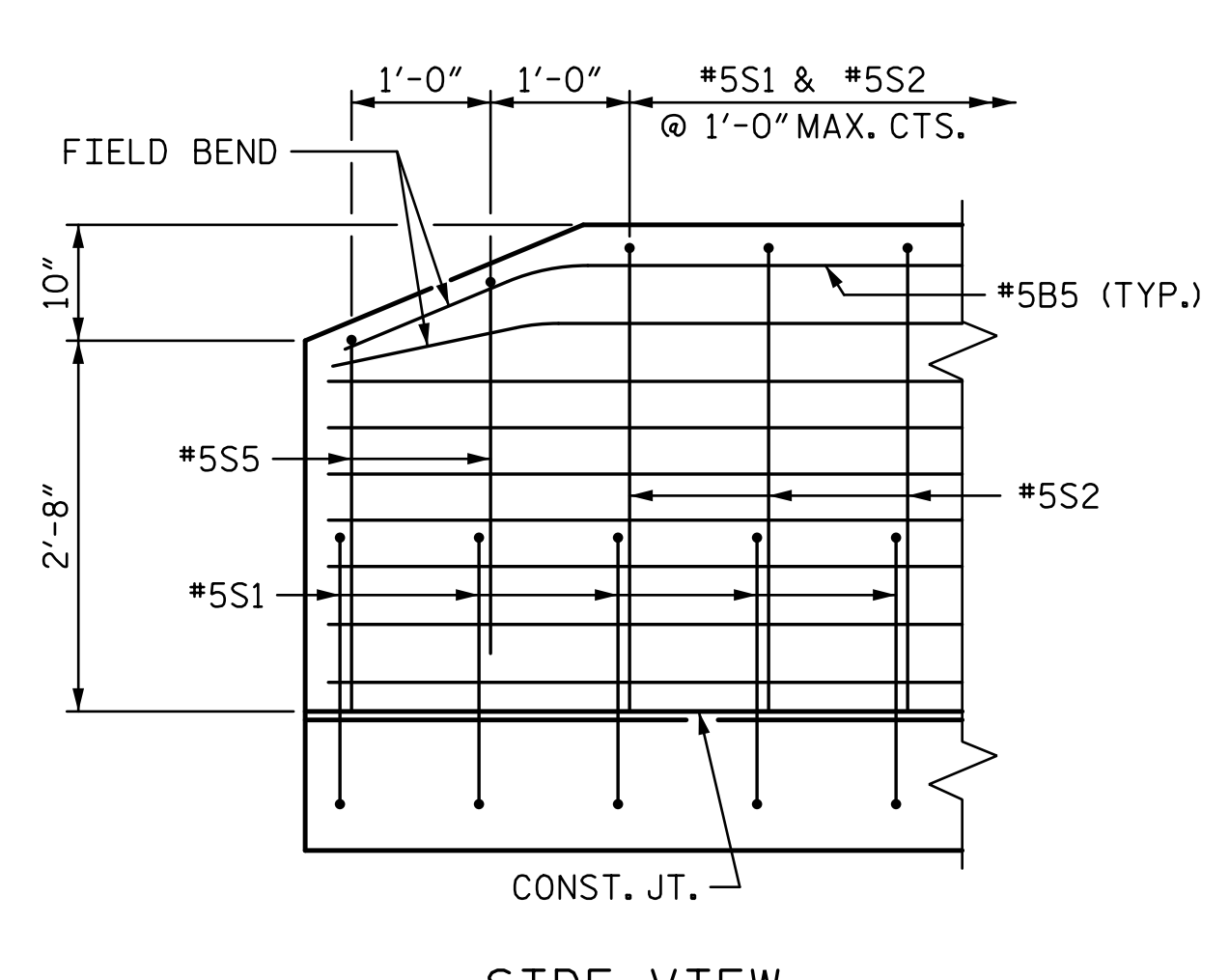
SECTION THRU RAIL



SECTION AT JOINT



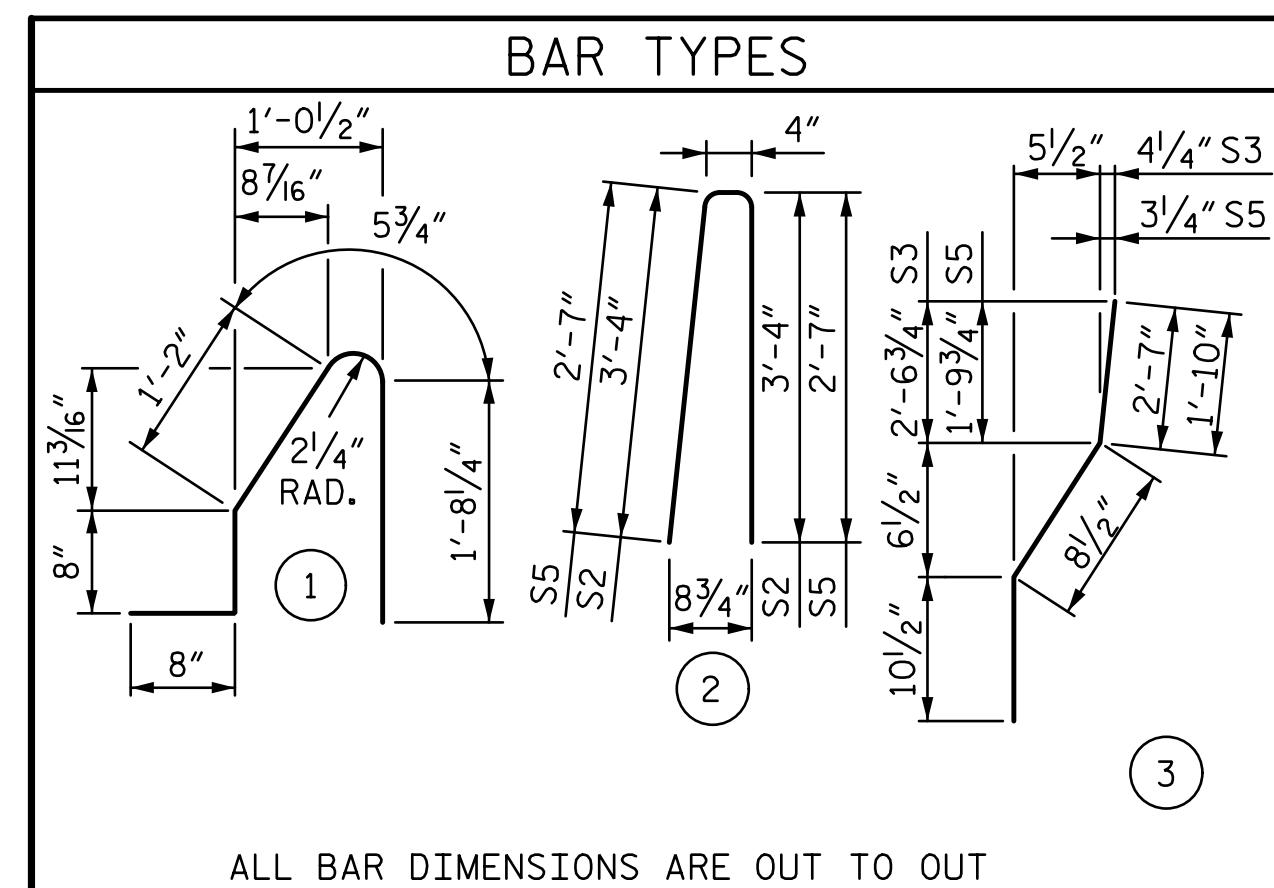
END VIEW



SIDE VIEW

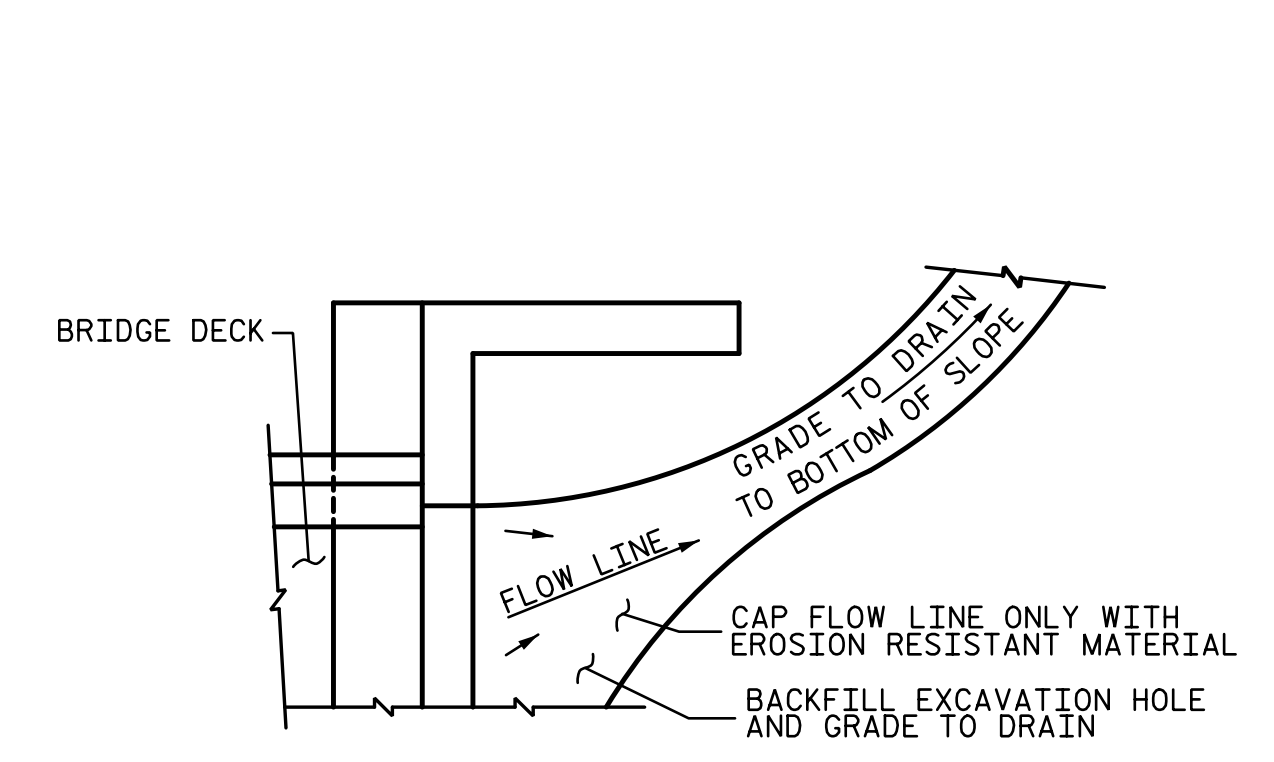
END OF RAIL DETAILS

NOTES:  
1. FOR ADDITIONAL DETAILS AND NOTES, SEE "CONCRETE BARRIER RAIL" SHEETS.



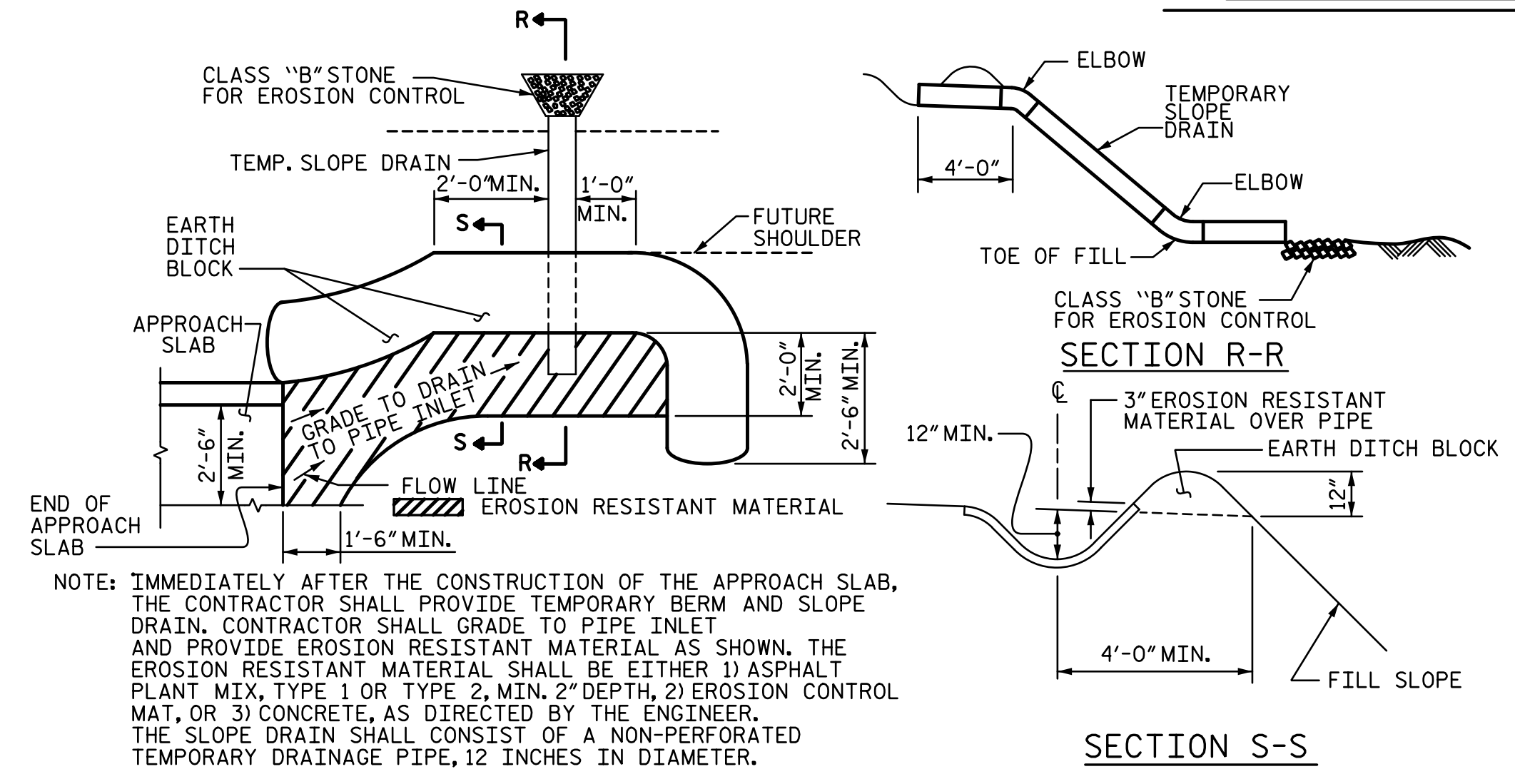
ALL BAR DIMENSIONS ARE OUT TO OUT

BILL OF MATERIAL					
BARRIER RAIL ONLY					
BAR	NO.	SIZE	TYPE	LENGTH	WEIGHT
*B5	88	#5	STR	7'-2"	658
*S1	43	#5	①	4'-8"	209
*S2	35	#5	②	7'-0"	256
*S3	4	#5	③	4'-2"	17
*S4	5	#5	STR	4'-0"	21
*S5	8	#5	②	5'-6"	46
				EPOXY COATED REINFORCING STEEL	LBS. 1,207
				CLASS AA CONCRETE	C. Y. 5.9
				CONCRETE BARRIER RAIL	43.4 LIN. FT.



NOTE: IF THE APPROACH SLAB IS NOT CONSTRUCTED IMMEDIATELY AFTER THE BACKFILLING OF THE END BENT EXCAVATION, GRADE TO DRAIN TO THE BOTTOM OF THE SLOPE AND PROVIDE EROSION RESISTANT MATERIAL, SUCH AS FIBERGLASS ROVING OR AS DIRECTED BY THE ENGINEER TO PREVENT SOIL EROSION AND TO PROTECT THE AREA ADJACENT TO THE STRUCTURE. THE CONTRACTOR WILL BE REQUIRED TO REMOVE THESE MATERIALS PRIOR TO CONSTRUCTION OF THE APPROACH SLAB.

TEMPORARY DRAINAGE DETAIL



TEMPORARY BERM AND SLOPE DRAIN DETAILS  
(TO BE USED WHEN SHOULDER BERM CUTTER IS REQUIRED)

PROJECT NO. R-2707C  
CLEVELAND COUNTY  
STATION: 596+50.98 -L-  
SHEET 2 OF 2

DOCUMENT NOT CONSIDERED FINAL UNLESS ALL SIGNATURES COMPLETED

Seal of North Carolina Professional Engineer Tony R. Laws, Jr. License No. CA000687647. 12/13/2016

STV ENGINEERS, INC. 100 Years 900 West Trade St., Suite 715 Charlotte, NC 28202 NC License Number F-5991

STATE OF NORTH CAROLINA DEPARTMENT OF TRANSPORTATION RALEIGH					
BRIDGE APPROACH SLAB (SITE 6R)					
REVISIONS					
NO.	BY:	DATE:	NO.	BY:	DATE:
1			3		
2			4		

SHEET NO. S8-44
TOTAL SHEETS 44

12/13/2016 7:03:44 PM R:\408\_087\_R2707C\_SMU\_BAS02\_S8-44.dgn