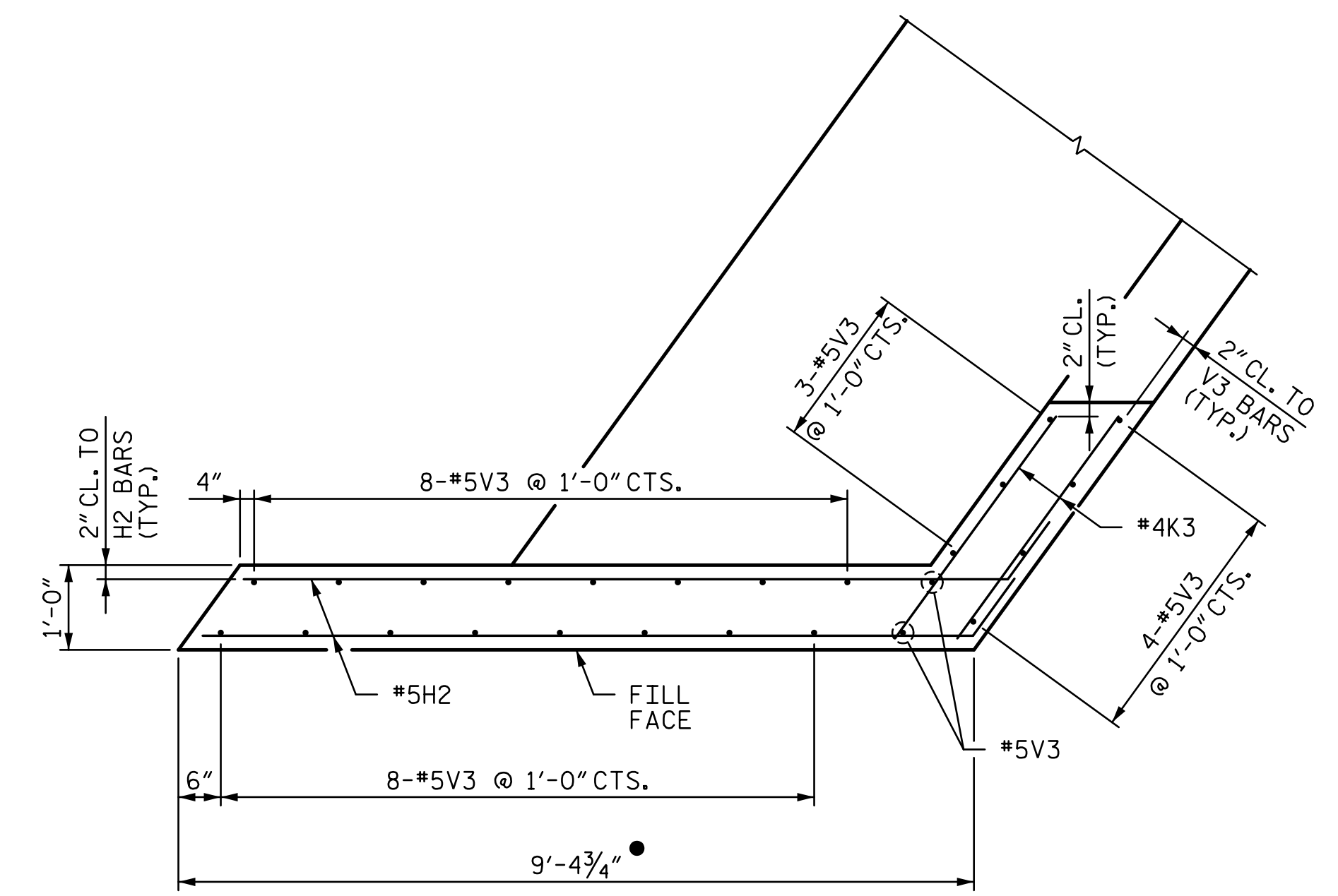
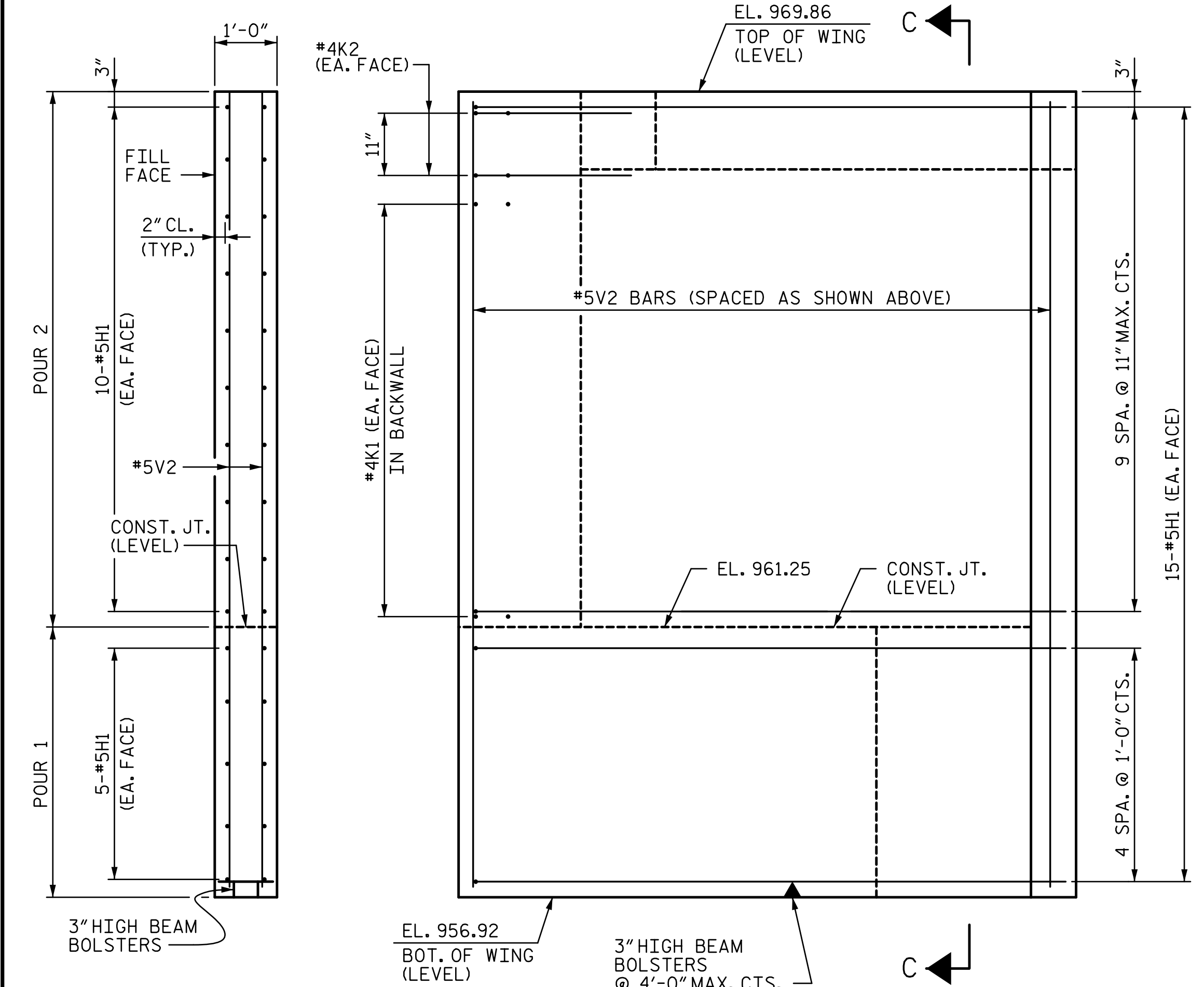


PLAN (W3)

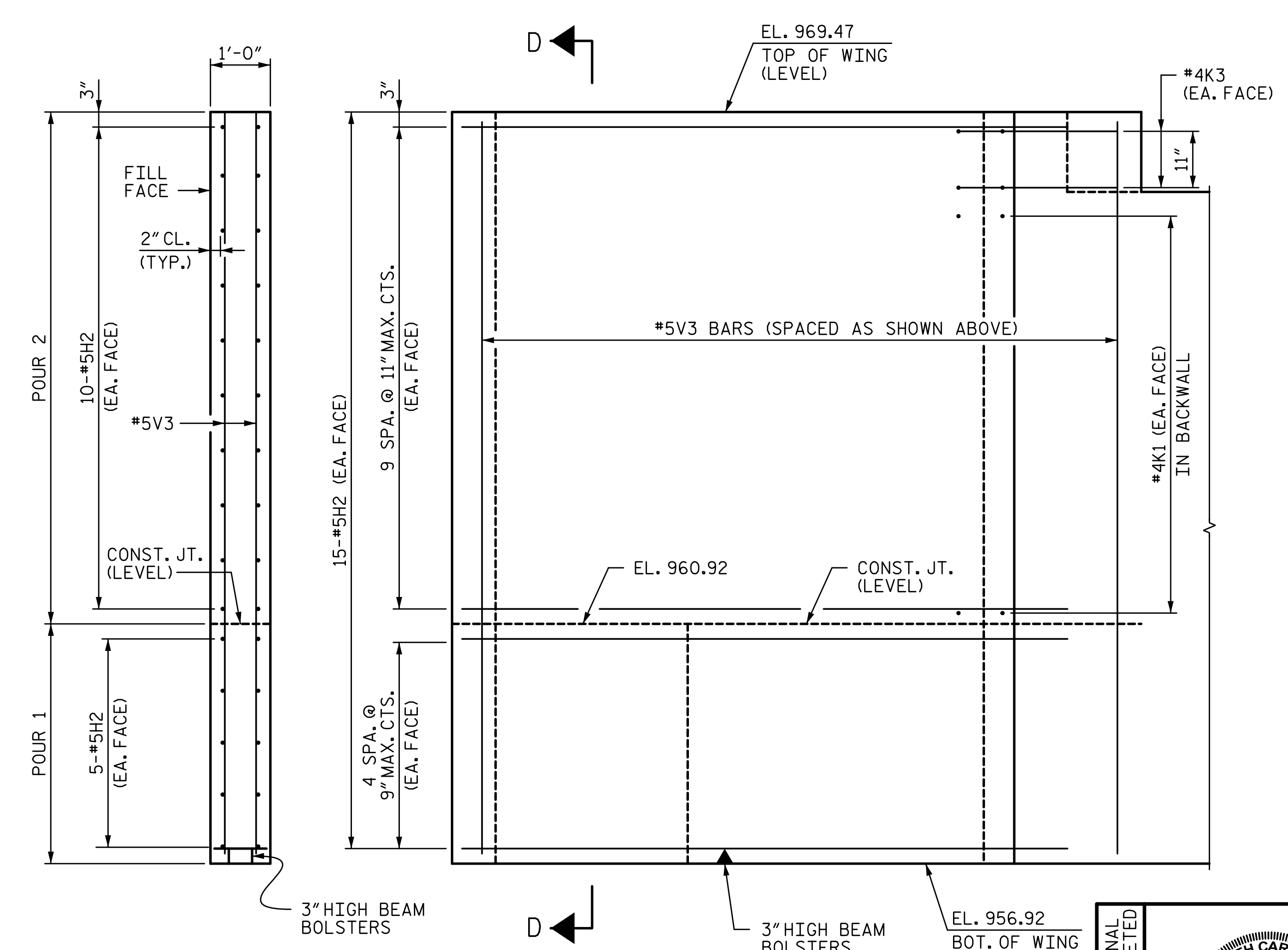


PLAN (W4)

SEE NOTE 4 ON SHEET 1 OF 3



ELEVATION (W3)



ELEVATION (W4)

PROJECT NO. R-2707C
CLEVELAND COUNTY
 STATION: 596+50.98 -L-
 SHEET 2 OF 3

DOCUMENT NOT CONSIDERED FINAL UNLESS ALL SIGNATURES COMPLETED

Seal of North Carolina Professional Engineer
 SEAL 40317
 ENGINEER
 TONY R. LAWS, JR.
 CARC0068764F7
 12/13/2016

STATE OF NORTH CAROLINA
 DEPARTMENT OF TRANSPORTATION
 RALEIGH
 SUBSTRUCTURE
 END BENT 2
 (SITE 6R)

REVISIONS			
NO.	BY:	DATE:	NO.
1			3
2			4

SHEET NO. S8-40
 TOTAL SHEETS 44

DRAWN BY: <u>MBC</u>	DATE: <u>9-16</u>	DESIGN ENGINEER OF RECORD: <u>V. WU</u>	DATE: <u>10-16</u>
CHECKED BY: <u>TJT</u>	DATE: <u>10-16</u>		

12/13/2016 7:03:41 PM R:\408_079_R2707C_SMU_EB202_S8-40.dgn