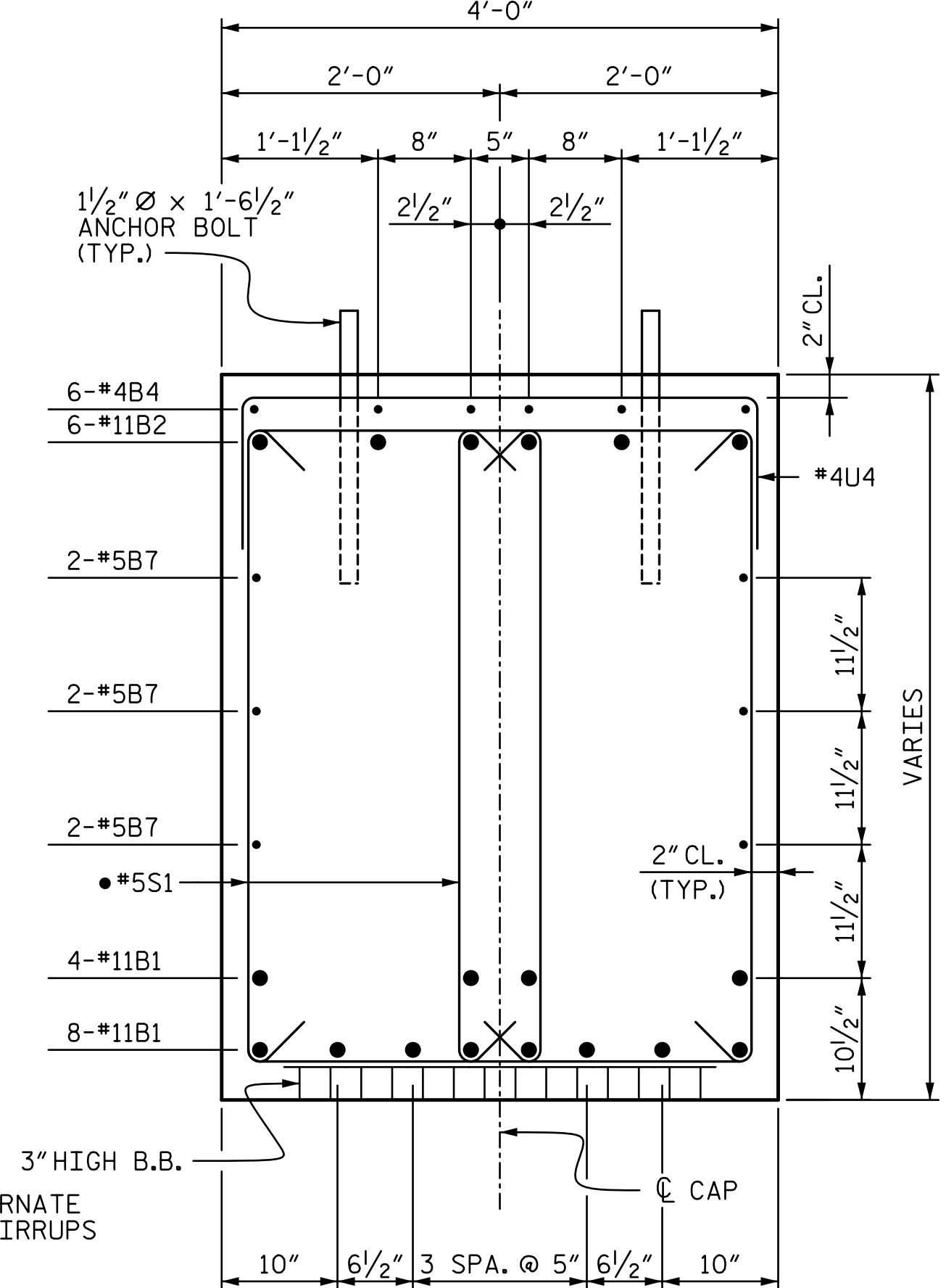
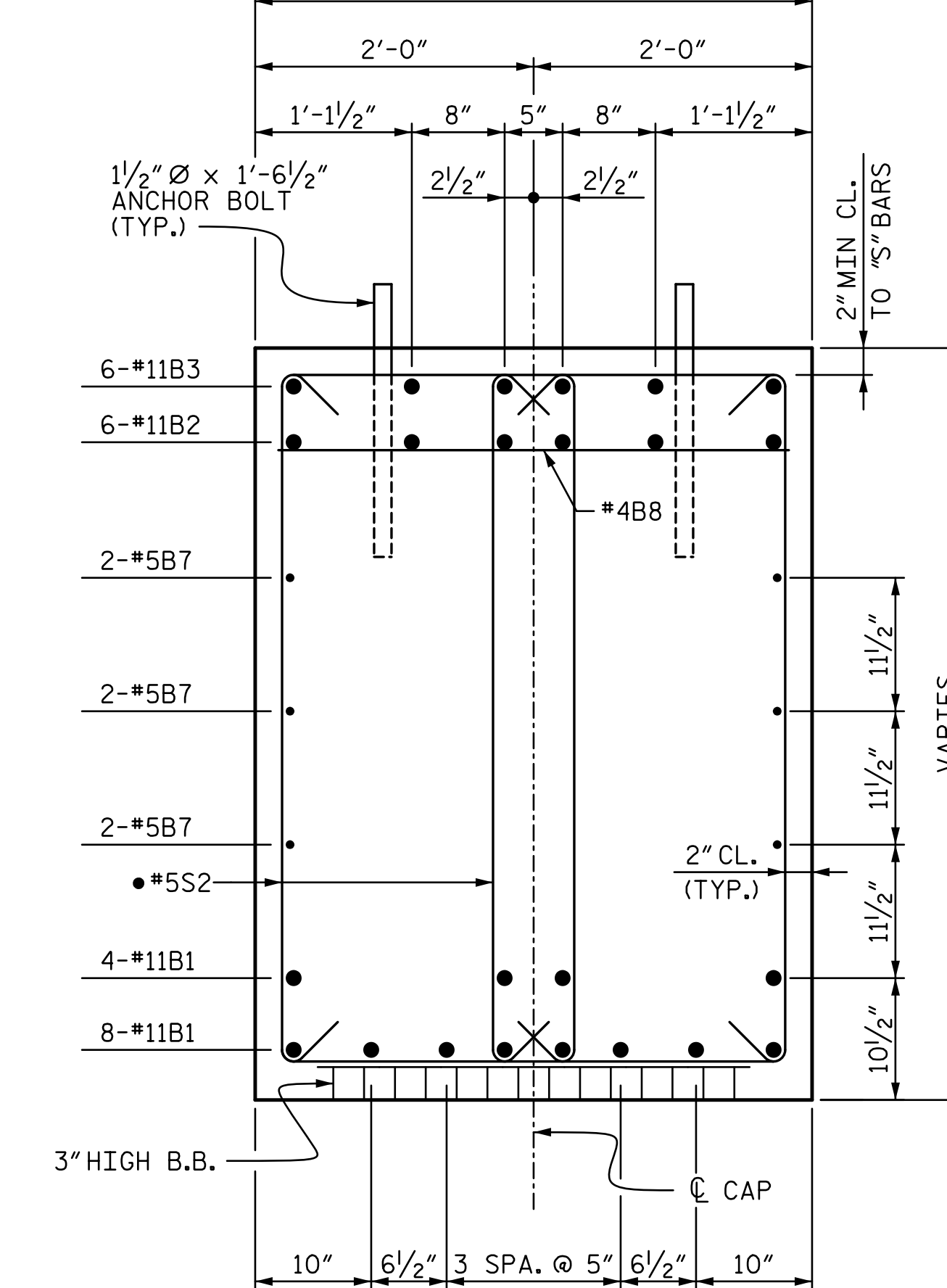


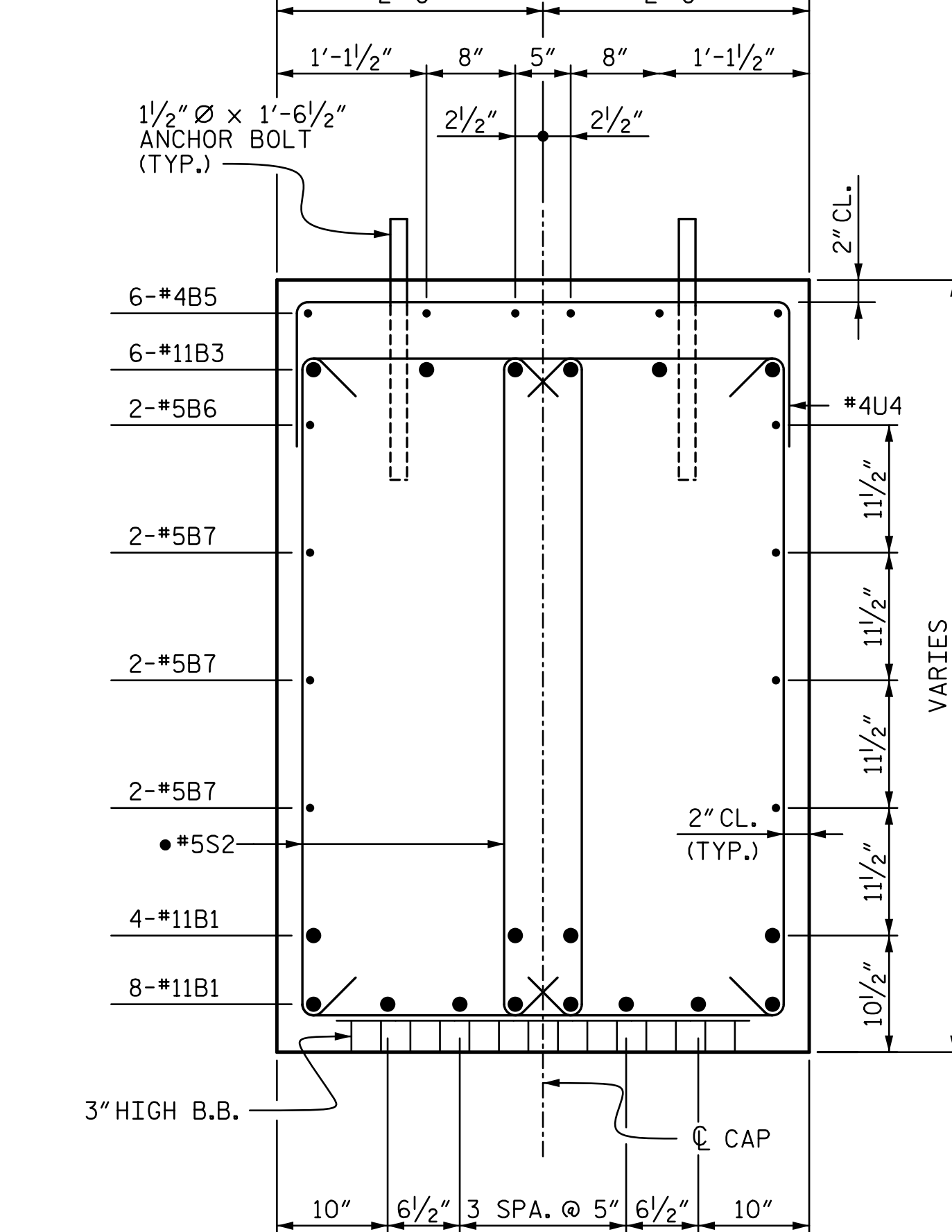
SECTION A-A



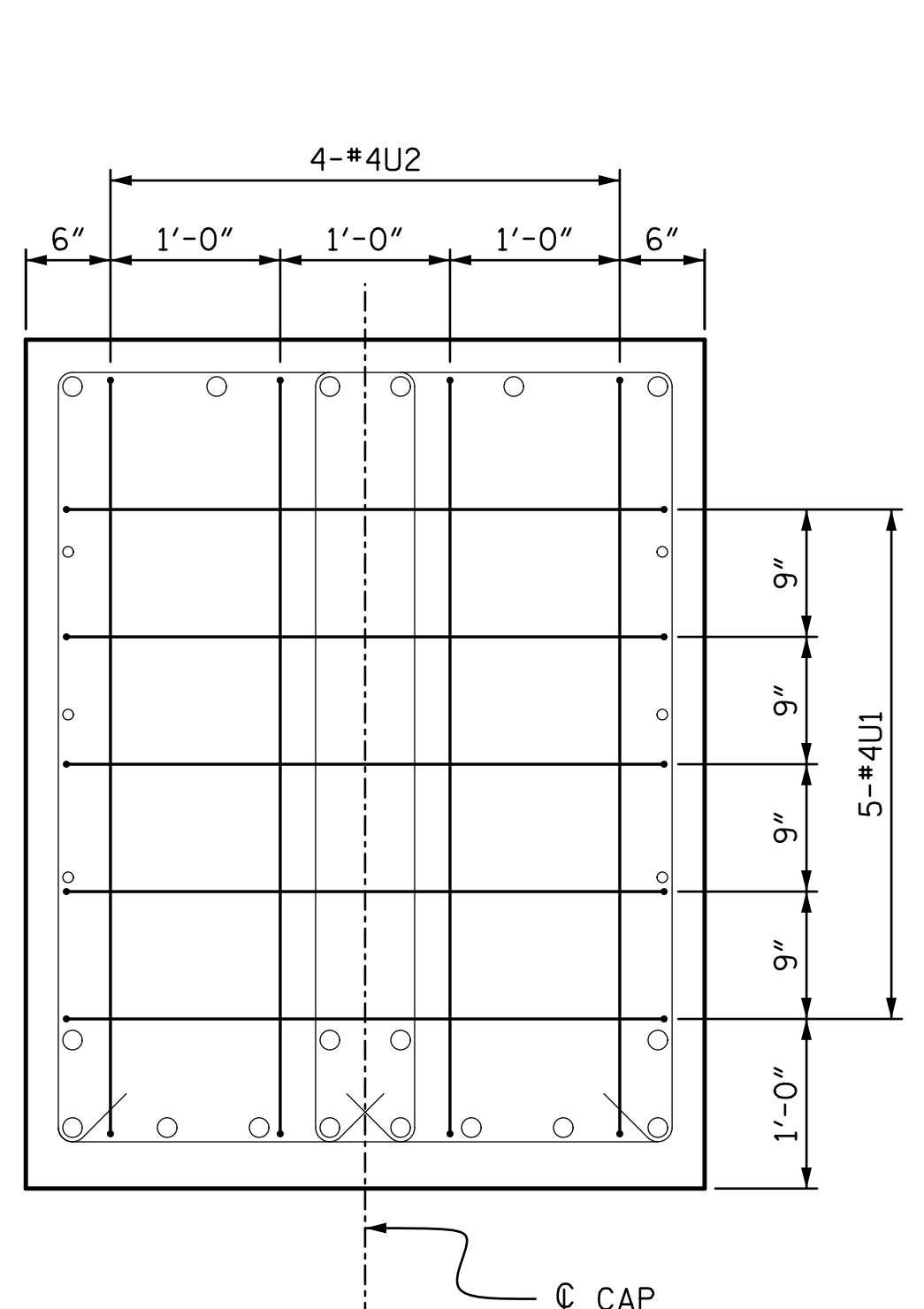
SECTION B-B



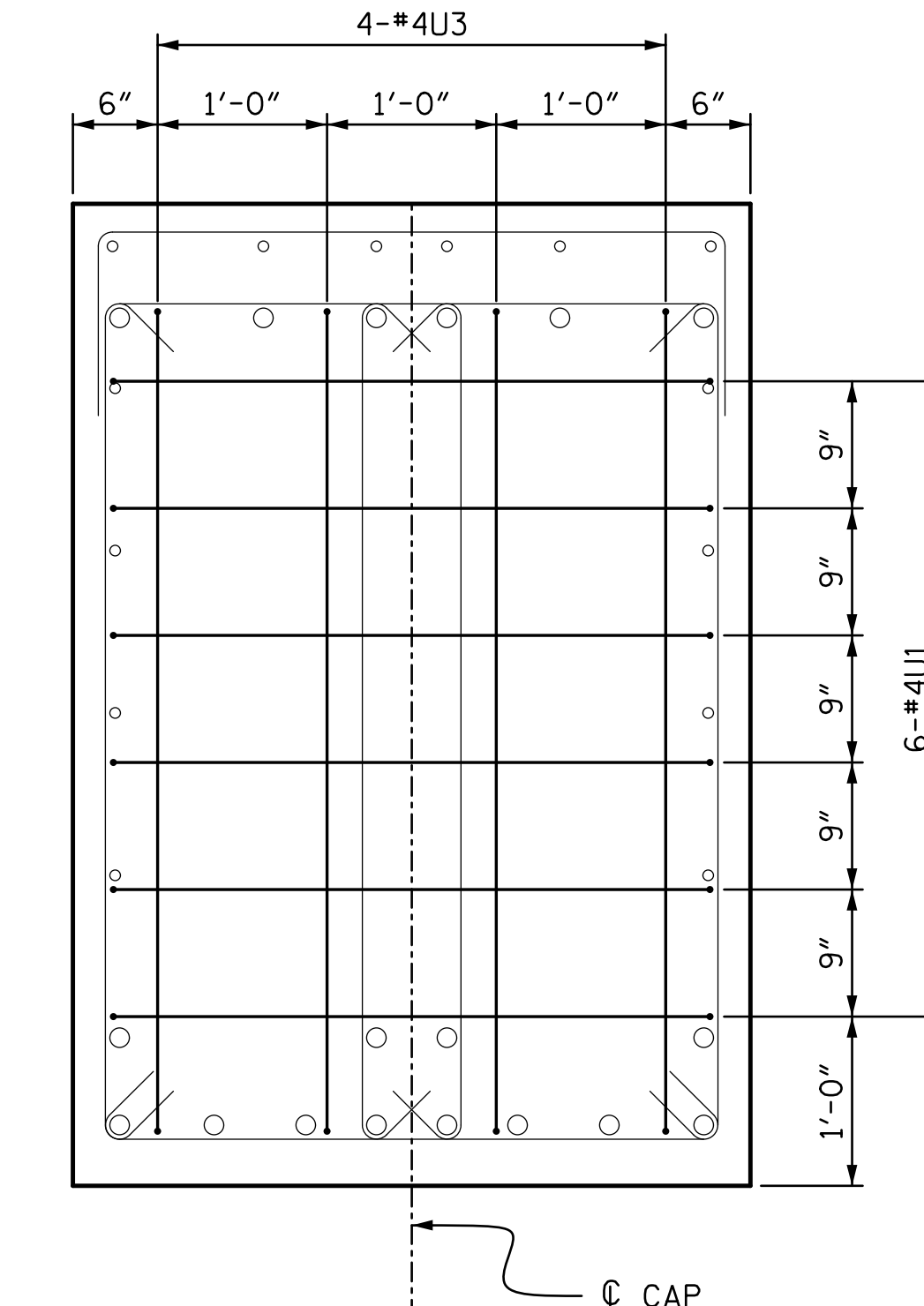
SECTION C-C



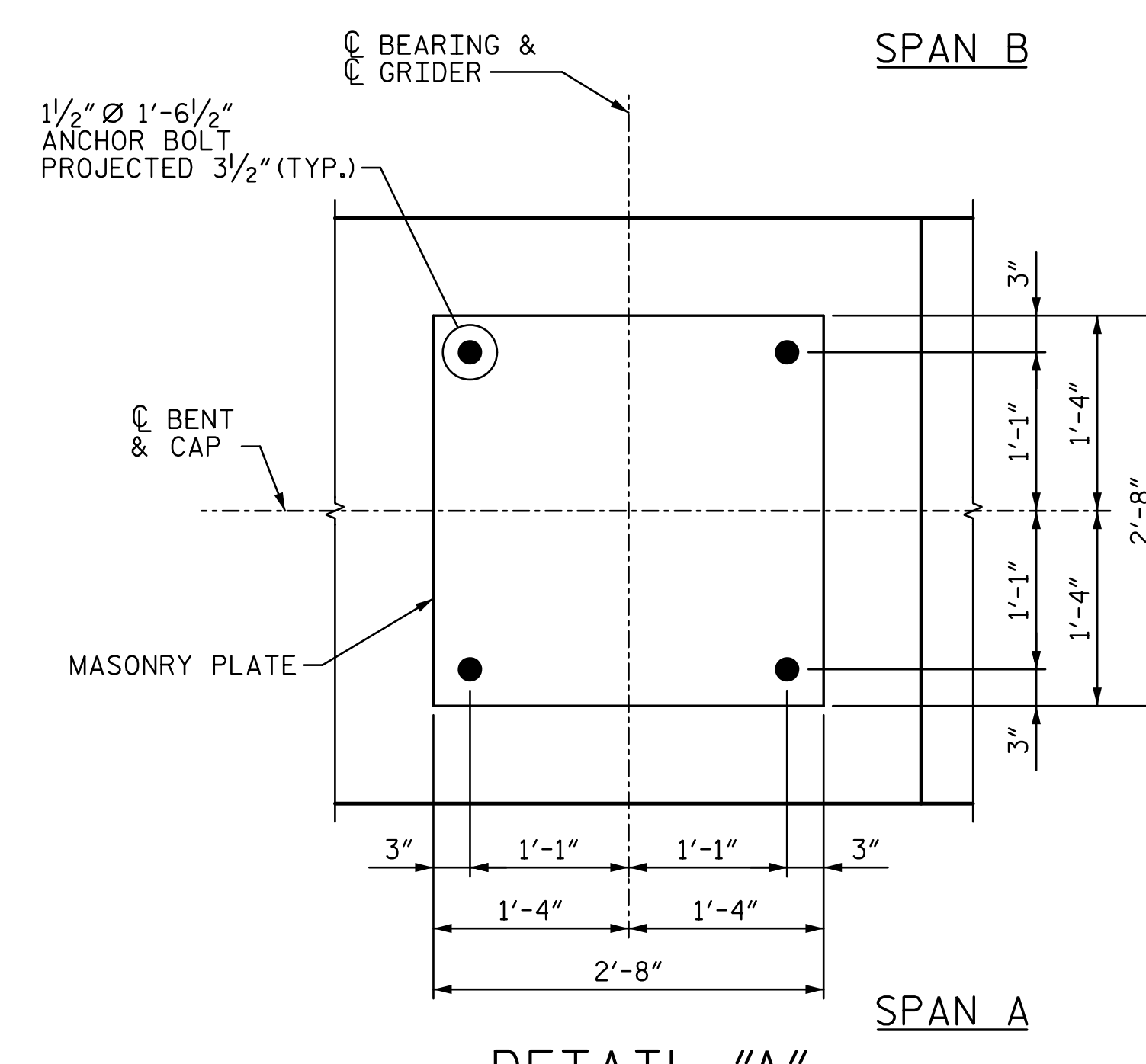
SECTION D-D



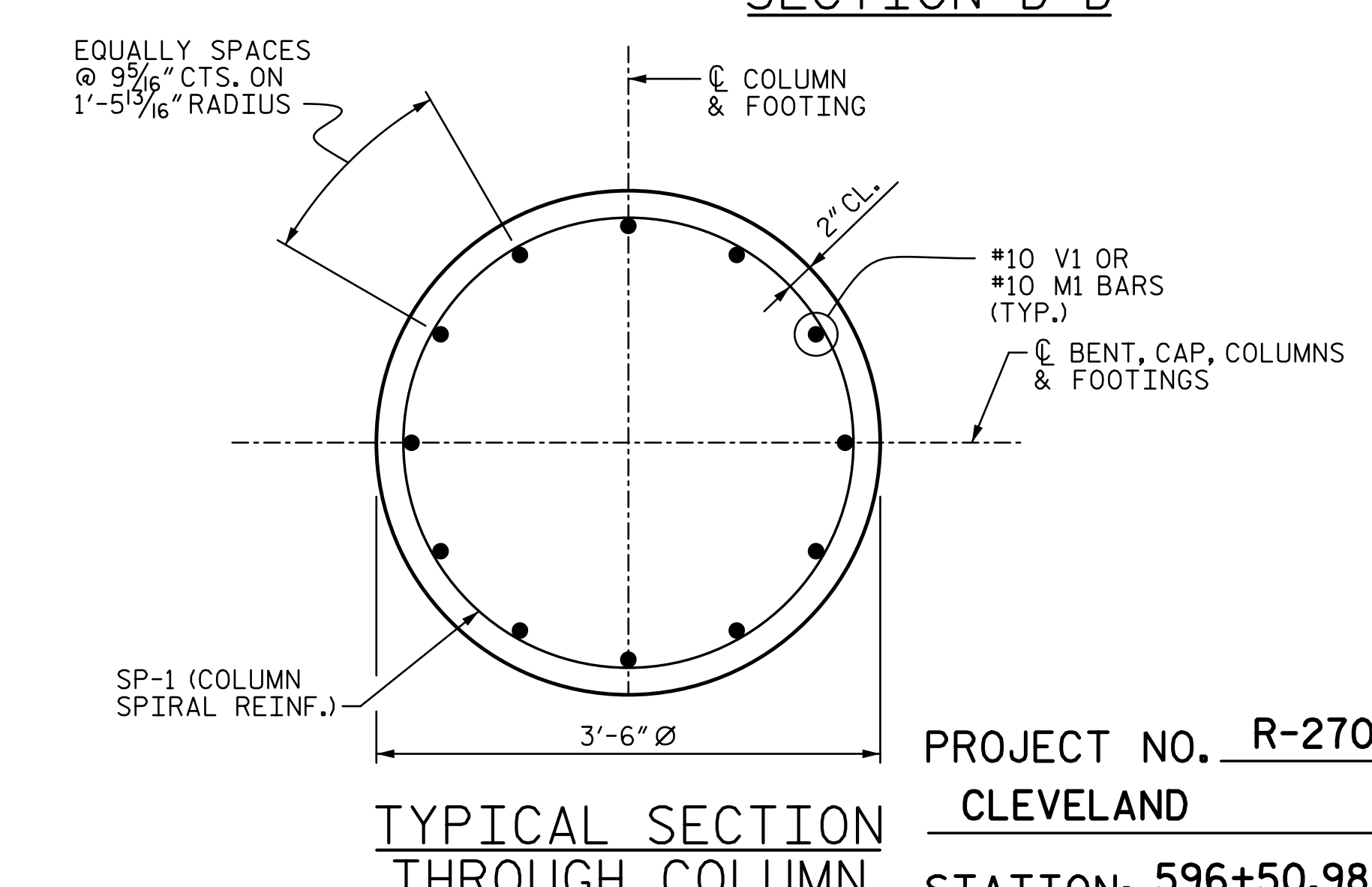
VIEW E-E



VIEW F-F



DETAIL "A"



TYPICAL SECTION THROUGH COLUMN

PROJECT NO. R-2707C
CLEVELAND COUNTY
 STATION: 596+50.98 -L-
 SHEET 2 OF 3

DOCUMENT NOT CONSIDERED FINAL UNLESS ALL SIGNATURES COMPLETED		STATE OF NORTH CAROLINA DEPARTMENT OF TRANSPORTATION RALEIGH				SHEET NO. S8-37 TOTAL SHEETS 44
		SUBSTRUCTURE				
		BENT 1 DETAILS (SITE 6R)				
REVISIONS						
NO.	BY:	DATE:	NO.	BY:	DATE:	
1			3			
2			4			

NOTE:
 1. SEE SHEET 1 OF 3 FOR NOTES.

12/13/2016 7:03:40 PM R:\408_073_R2707C_SMU_B102_S8-37.dgn

DRAWN BY: ATH DATE: 10-16 DESIGN ENGINEER OF RECORD: V. WU DATE: 10-16
 CHECKED BY: TJT DATE: 10-16