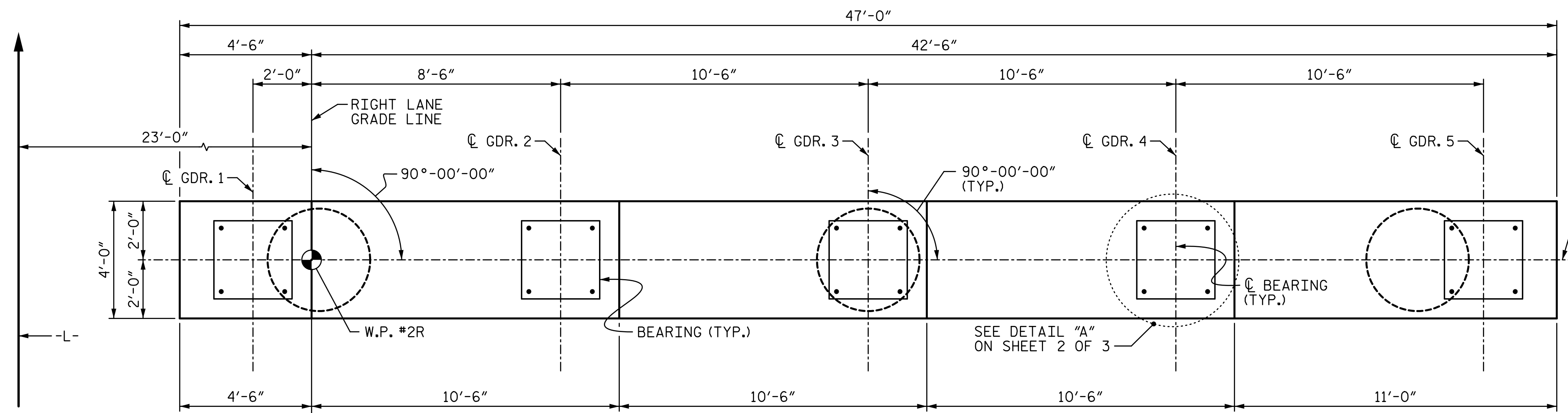


12/13/2016 7:03:39 PM R:\408\_071\_R2707C\_SML\_B101\_S8-36.dgn

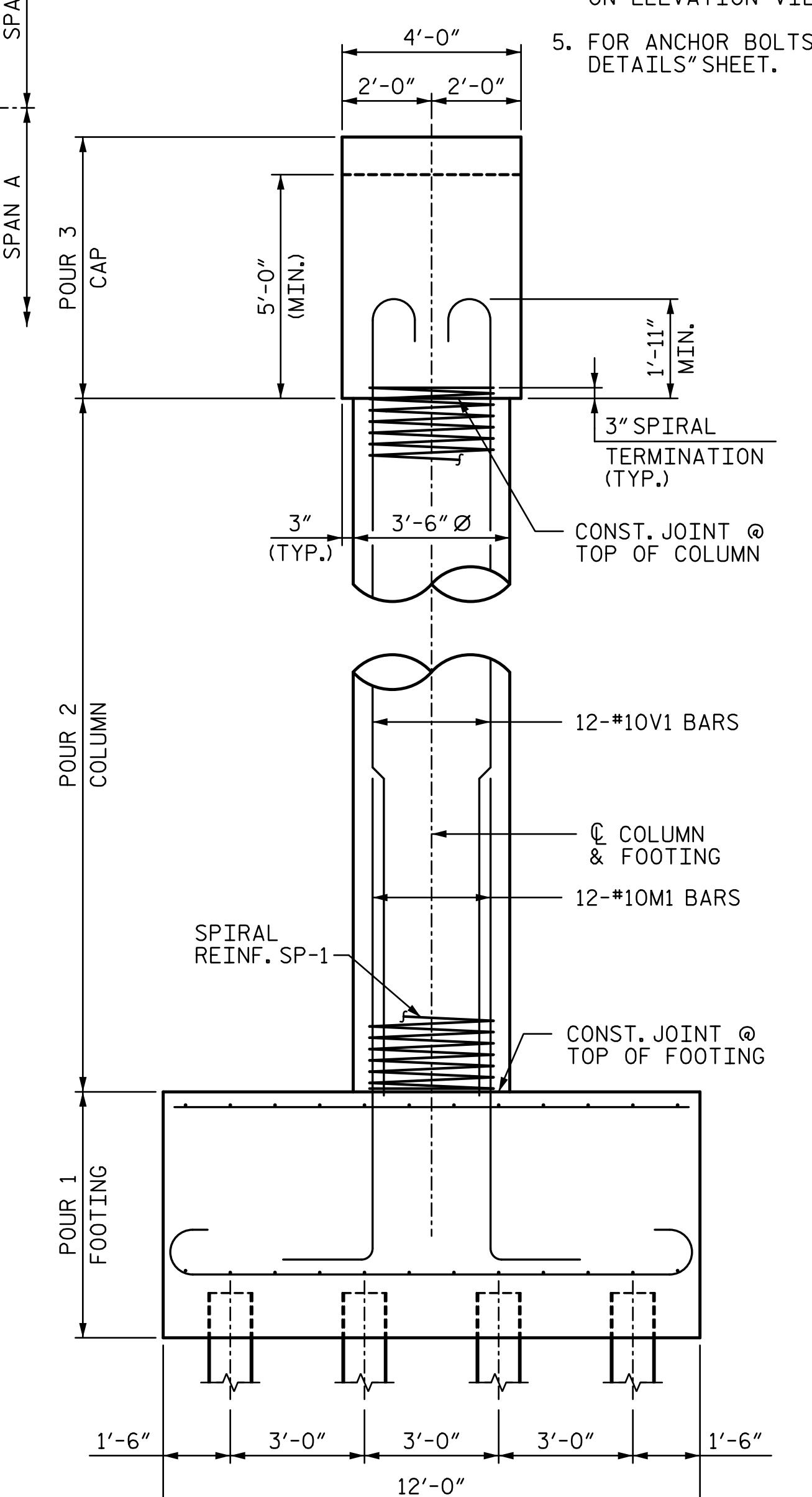
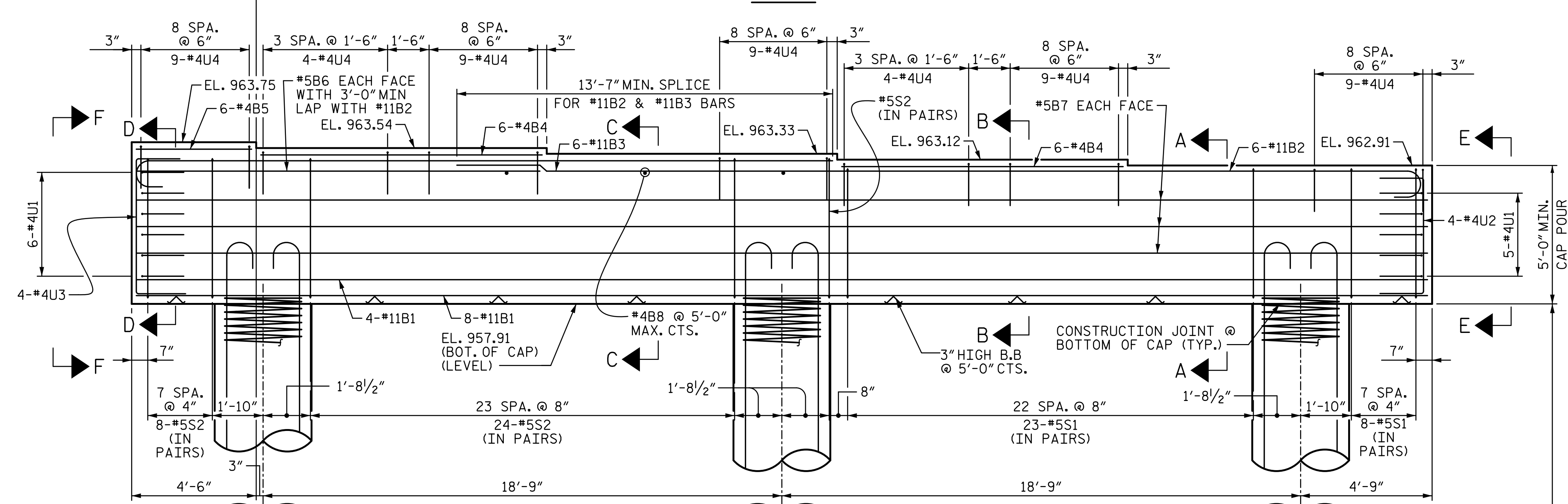


BENT 1 CONTROL LINE (C.B. BENT, CAP, BEARING, COLUMNS & FOOTINGS)

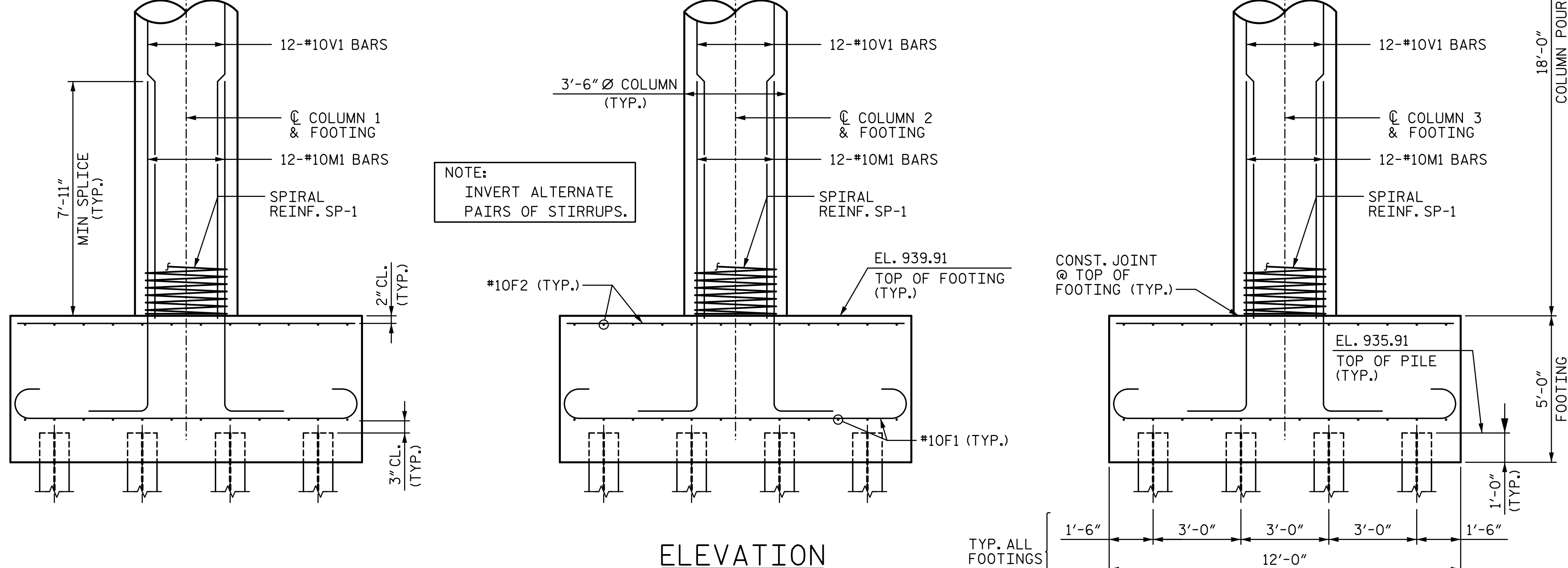
SPAN A

SPAN B

- NOTES:**
1. STIRRUPS AND "U BARS" IN CAP MAY BE SHIFTED SLIGHTLY AS NECESSARY TO CLEAR ANCHOR BOLTS.
  2. HOOKS ON BARS MAY BE TURNED AS NECESSARY FOR PLACING REINFORCING STEEL.
  3. SEE "GENERAL DRAWING GENERAL NOTES" SHEET FOR ADDITIONAL NOTES.
  4. SEE SHEET 2 OF 3 FOR SECTIONS CALLED OUT ON ELEVATION VIEW AND DETAIL "A".
  5. FOR ANCHOR BOLTS, SEE "DISC BEARING DETAILS" SHEET.



END VIEW PROJECT NO. R-2707C  
 CLEVELAND COUNTY  
 STATION: 596+50.98 -L-  
 SHEET 1 OF 3



DRAWN BY: ATH DATE: 10-16  
 CHECKED BY: T.J.T DATE: 10-16  
 DESIGN ENGINEER OF RECORD: V. WU DATE: 10-16

STATE OF NORTH CAROLINA  
 DEPARTMENT OF TRANSPORTATION  
 RALEIGH

SEAL 40317  
 ENGINEER  
 TONY R. LAWS, JR.  
 12/13/2016

STV ENGINEERS, INC.  
 900 West Trade St., Suite 715  
 Charlotte, NC 28202  
 NC License Number F-5991

REVISIONS

NO.	BY:	DATE:	NO.	BY:	DATE:
1			3		
2			4		

SHEET NO. S8-36  
 TOTAL SHEETS 44