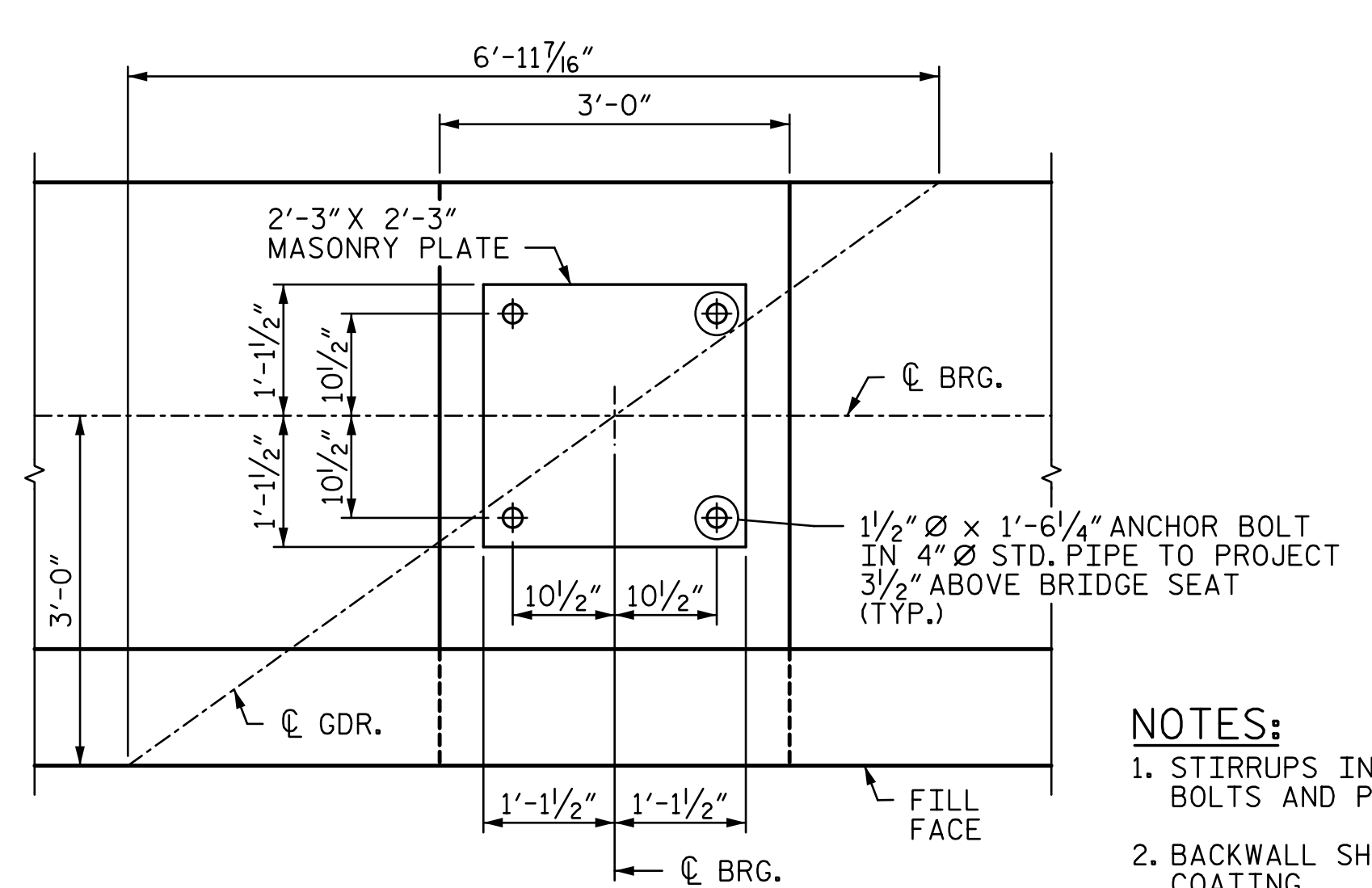
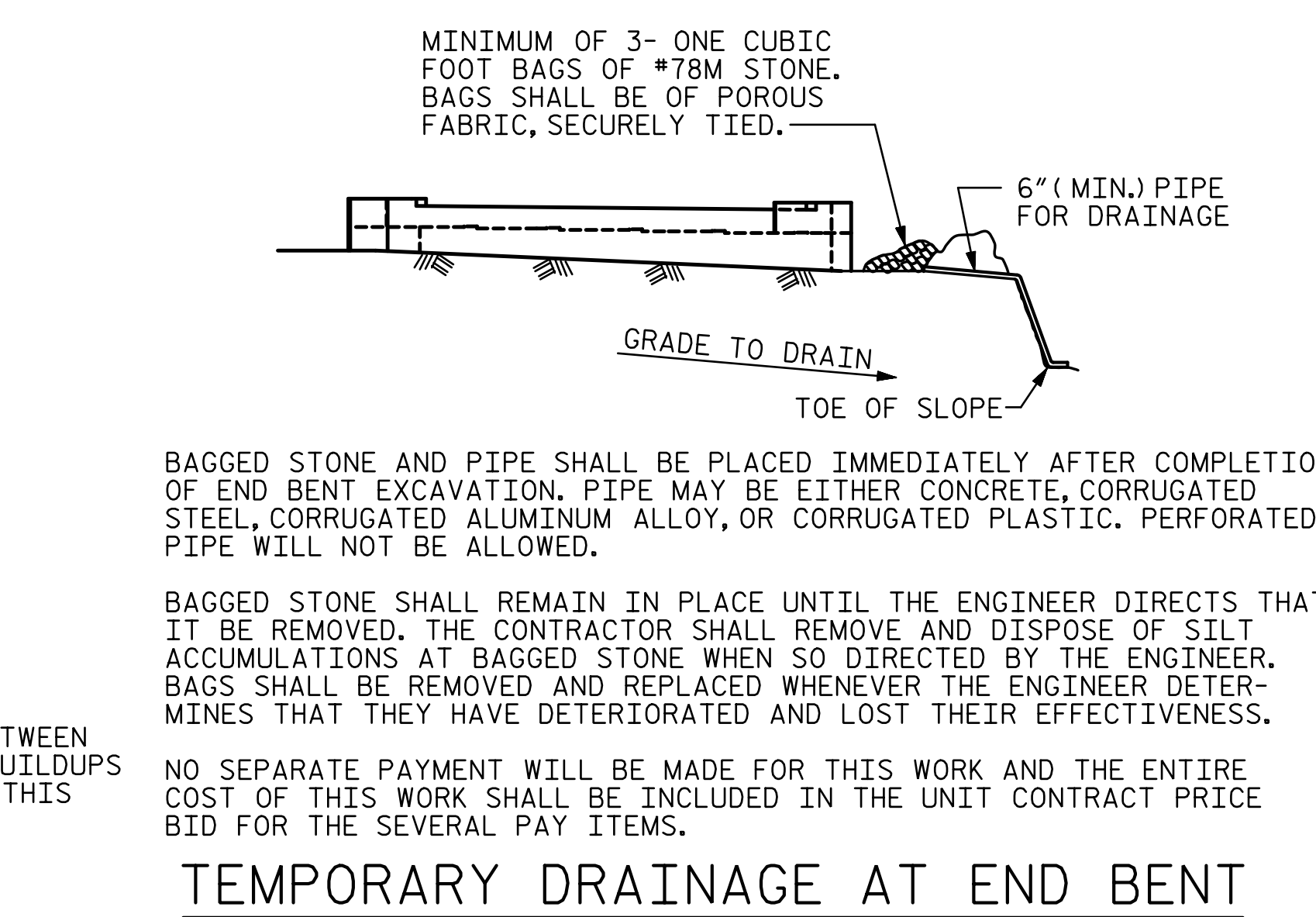
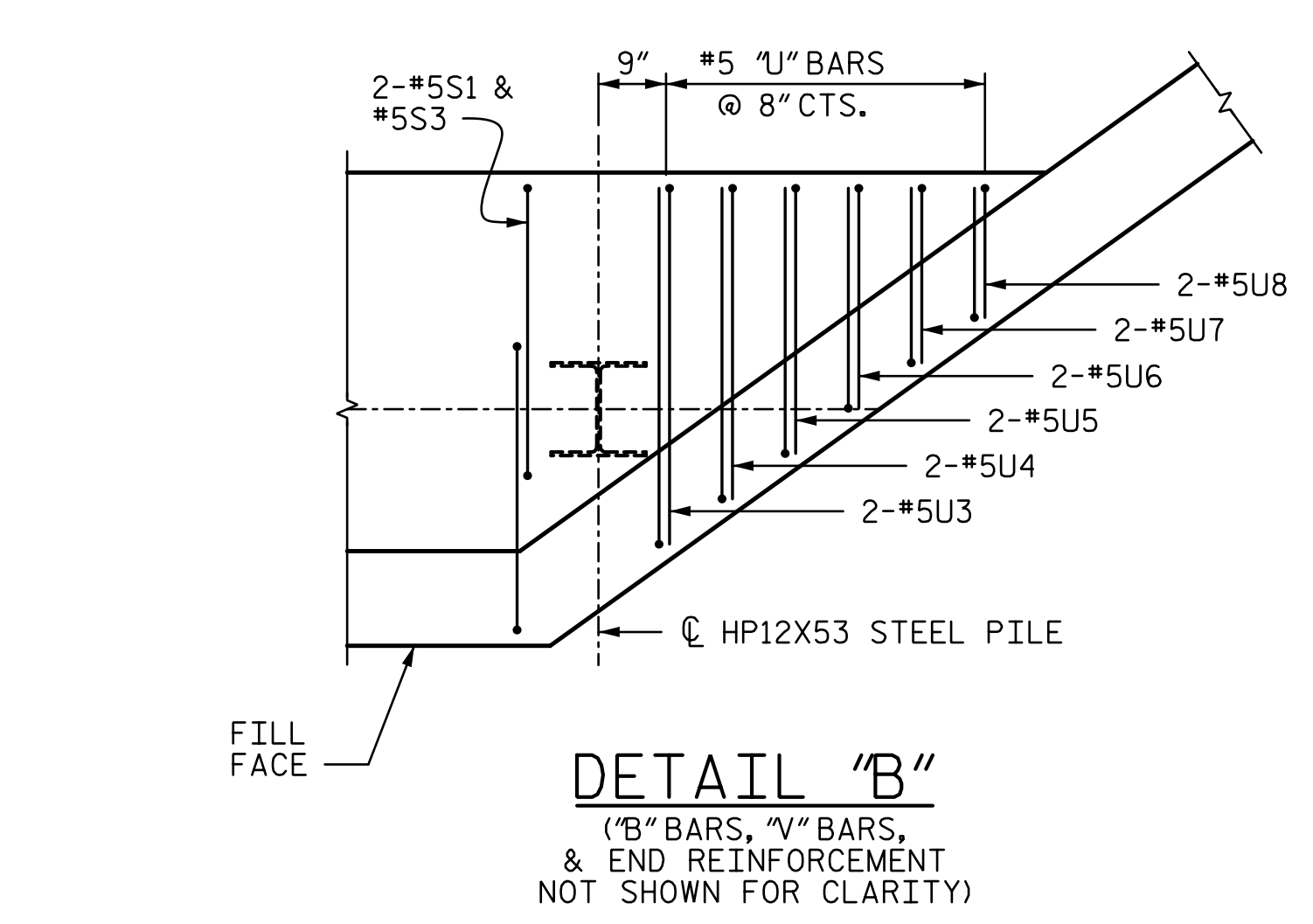


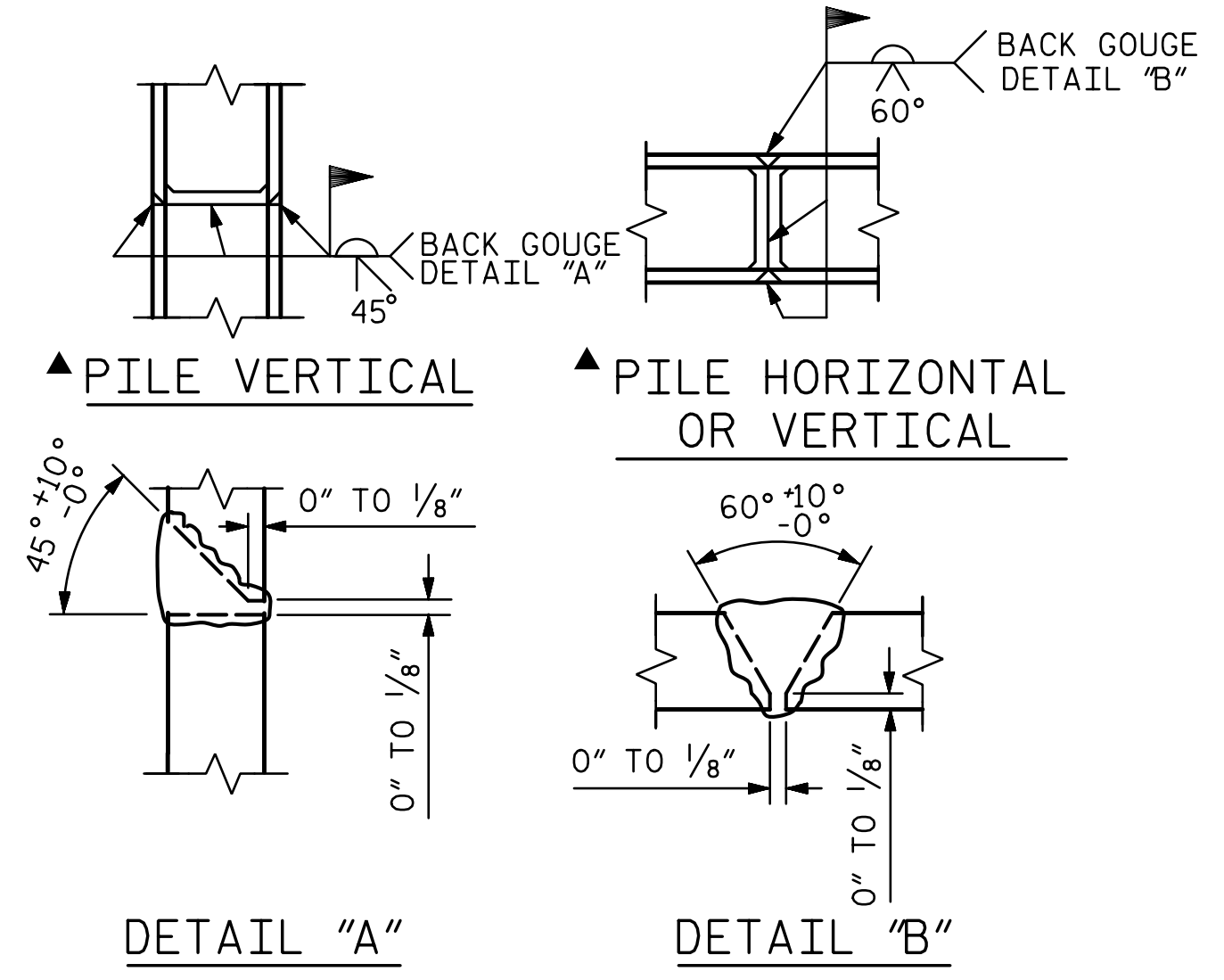
SECTION A-A



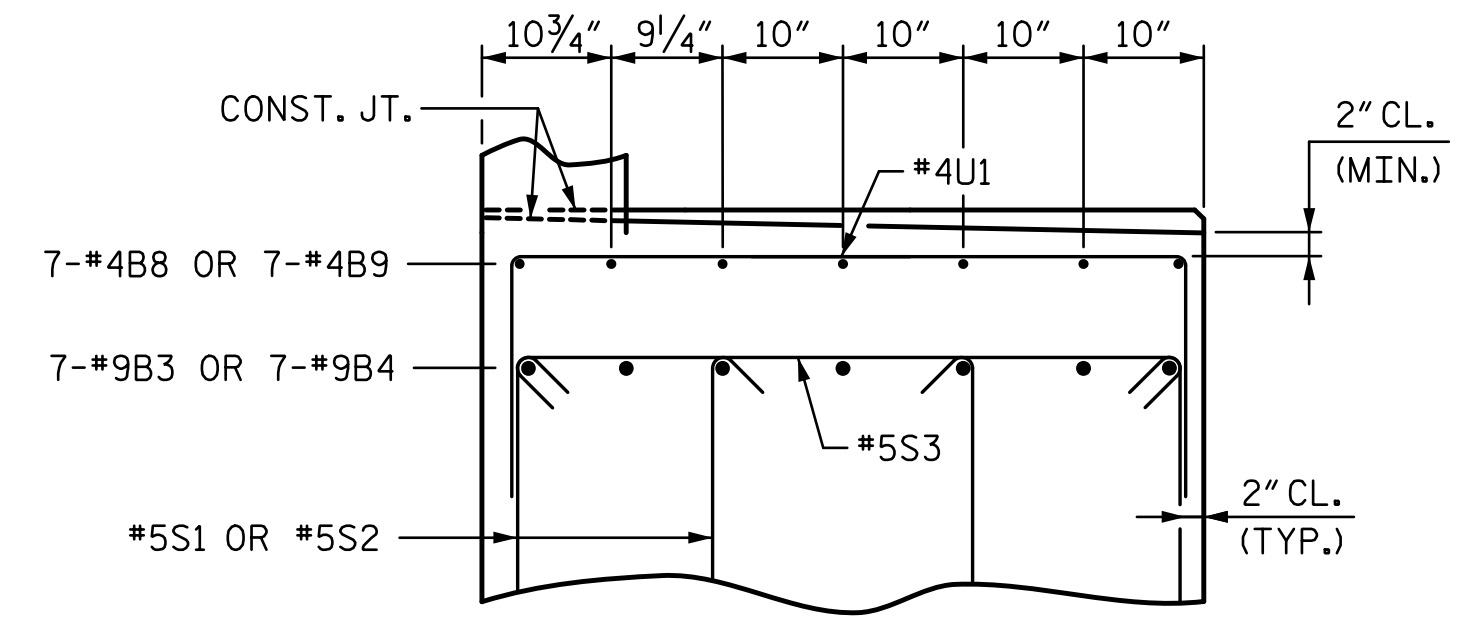
DETAIL "A"



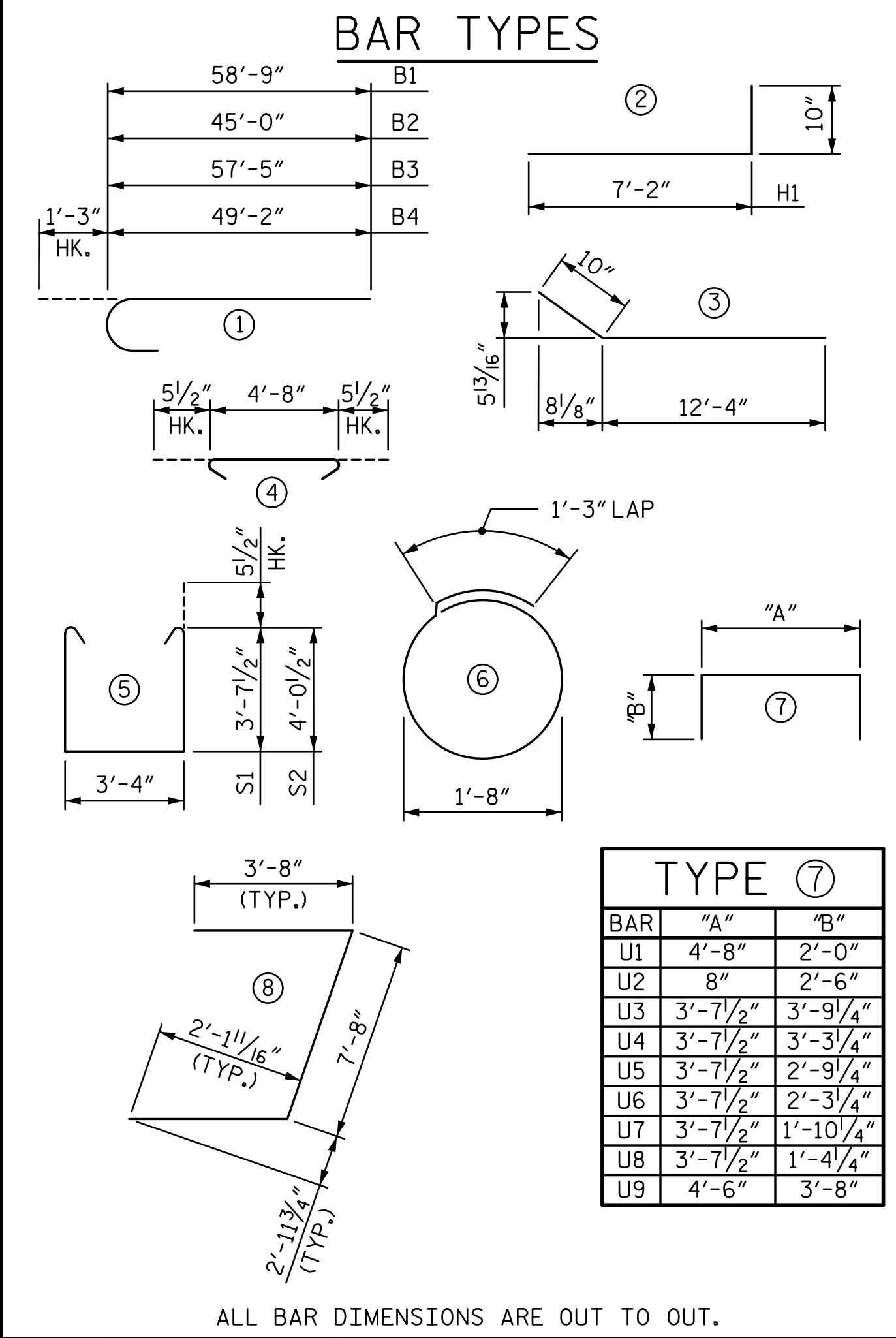
DETAIL "B"  
(\*B" BARS, "V" BARS, & END REINFORCEMENT NOT SHOWN FOR CLARITY)



PILE SPLICE DETAILS  
▲ POSITION OF PILE DURING WELDING.



PARTIAL SECTION B-B  
(ANCHOR BOLTS NOT SHOWN FOR CLARITY)



TYPE 7		
BAR	"A"	"B"
U1	4'-8"	2'-0"
U2	8"	2'-6"
U3	3'-7 1/2"	3'-9 1/4"
U4	3'-7 1/2"	3'-3 1/4"
U5	3'-7 1/2"	2'-9 1/4"
U6	3'-7 1/2"	2'-3 1/4"
U7	3'-7 1/2"	1'-10 1/4"
U8	3'-7 1/2"	1'-4 1/4"
U9	4'-6"	3'-8"

BILL OF REINFORCING					
BAR	NO.	SIZE	TYPE	LENGTH	WEIGHT
B1	6	#9	①	60'-0"	1,224
B2	6	#9	①	46'-3"	944
B3	7	#9	①	58'-8"	1,396
B4	7	#9	①	50'-5"	1,200
B5	23	#4	STR	4'-8"	72
B6	16	#4	STR	25'-7"	273
B7	24	#5	STR	34'-5"	862
B8	7	#4	STR	17'-10"	83
B9	7	#4	STR	13'-2"	62
H1	28	#5	②	8'-0"	234
H2	28	#5	③	13'-2"	385
K1	64	#4	STR	24'-11"	1,065
K2	2	#4	STR	2'-2"	3
K3	2	#4	STR	1'-4"	2
K4	4	#4	STR	4'-5"	12
S1	84	#5	⑤	11'-6"	1,008
S2	88	#5	⑤	12'-4"	1,132
S3	86	#5	⑤	5'-7"	501
S4	52	#4	⑥	6'-6"	226
U1	21	#4	⑦	8'-8"	122
U2	84	#4	⑦	5'-8"	318
U3	2	#5	⑦	11'-2"	23
U4	2	#5	⑦	10'-2"	21
U5	2	#5	⑦	9'-2"	19
U6	2	#5	⑦	8'-2"	17
U7	2	#5	⑦	7'-4"	15
U8	2	#5	⑦	6'-4"	13
U9	1	#9	⑦	11'-10"	40
U10	1	#9	⑧	15'-0"	51
V1	170	#5	STR	10'-10"	1,921
V2	22	#5	STR	13'-0"	298
V3	36	#5	STR	12'-2"	457

QUANTITIES

	END BENT 1
REINFORCING STEEL	LBS. 13,999
CLASS A CONCRETE	
POUR 1 (CAP & LOWER WING)	: CU. YARDS 77.8
POUR 2 (BACKWALL & UPPER WING)	: CU. YARDS 30.7
TOTAL	: CU. YARDS 108.5
HP12x53 STEEL PILES	NO. 13
	LIN. FEET 915
PILE DRIVING EQUIP. SETUP FOR HP 12x53 STEEL PILES	EA. 13

PROJECT NO. **R-2707C**  
**CLEVELAND** COUNTY  
 STATION: **596+50.98 -L-**  
 SHEET 3 OF 3

STATE OF NORTH CAROLINA  
 DEPARTMENT OF TRANSPORTATION  
 RALEIGH

SEAL 40317  
 ENGINEER  
 TONY R. LAWS, JR.  
 2/21/2017

STV 100 years  
 STV ENGINEERS, INC.  
 900 West Trade St., Suite 715  
 Charlotte, NC 28202  
 NC License Number F-5991

REVISIONS				SHEET NO.
NO.	BY:	DATE:	NO.	DATE:
1			3	
2			4	

(SITE 6R)

SHEET NO.	S8-35
TOTAL SHEETS	44

DRAWN BY: **MBC** DATE: **10-16**  
 CHECKED BY: **TJT** DATE: **10-16**  
 DESIGN ENGINEER OF RECORD: **V. WU** DATE: **10-16**

R:\408\_069\_R2707C\_SMU\_EBI03\_S8-35.dgn  
 2/21/2017 11:54:03 PM  
 ch11kfmdb