

NOTES

FOR BRIDGE MOUNTED CHAIN LINK FENCE, SEE SPECIAL PROVISIONS.

BOLTS SHALL CONFORM TO THE REQUIREMENTS OF ASTM A307 AND NUTS SHALL CONFORM TO THE REQUIREMENTS OF AASHTO M291. BOLTS, NUTS, AND WASHERS SHALL BE GALVANIZED. (AT THE CONTRACTOR'S OPTION, STAINLESS STEEL BOLTS, NUTS, AND WASHERS MAY BE USED AS AN ALTERNATE FOR THE 3/4" Ø GALVANIZED BOLTS, NUTS, AND WASHERS. THEY SHALL CONFORM TO OR EXCEED THE MECHANICAL REQUIREMENTS OF ASTM A307. THE USE OF THIS ALTERNATE SHALL BE APPROVED BY THE ENGINEER.)

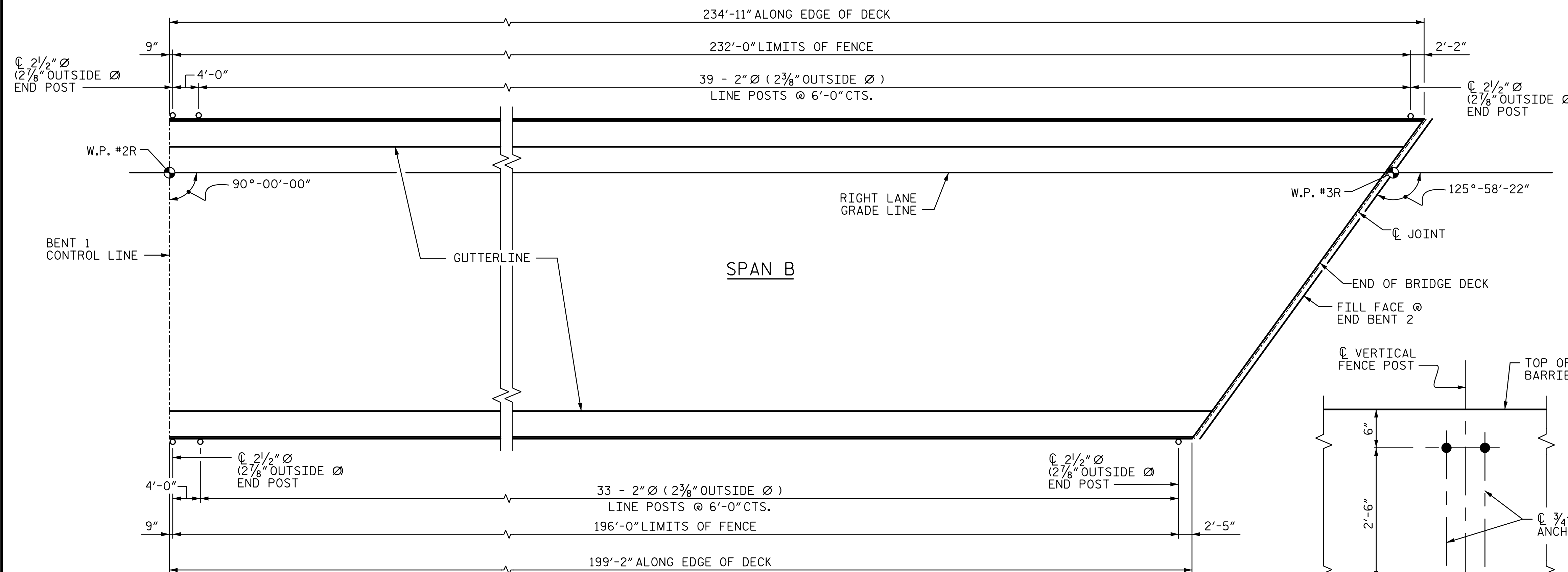
LEVEL ONE FIELD TESTING IS REQUIRED AND THE YIELD LOAD OF THE ANCHOR BOLTS IS 10.0 KIPS. FOR ADHESIVELY ANCHORED ANCHOR BOLTS, SEE THE STANDARD SPECIFICATIONS.

ALL FENCE MATERIAL SHALL MEET THE REQUIREMENTS OF SECTION 1050 OF THE STANDARD SPECIFICATIONS. GALVANIZE ALL STEEL PARTS AND HARDWARE IN ACCORDANCE WITH ARTICLE 1076 OF THE STANDARD SPECIFICATIONS.

FENCE POST LOCATIONS SHALL BE SHIFTED, AS NECESSARY, TO MAINTAIN 1'-0" MINIMUM DISTANCE FROM ANCHOR BOLT TO JOINTS IN CONCRETE BARRIER RAIL.

DIMENSIONS TAKEN ALONG OUTSIDE FACE OF CONCRETE BARRIER RAIL.

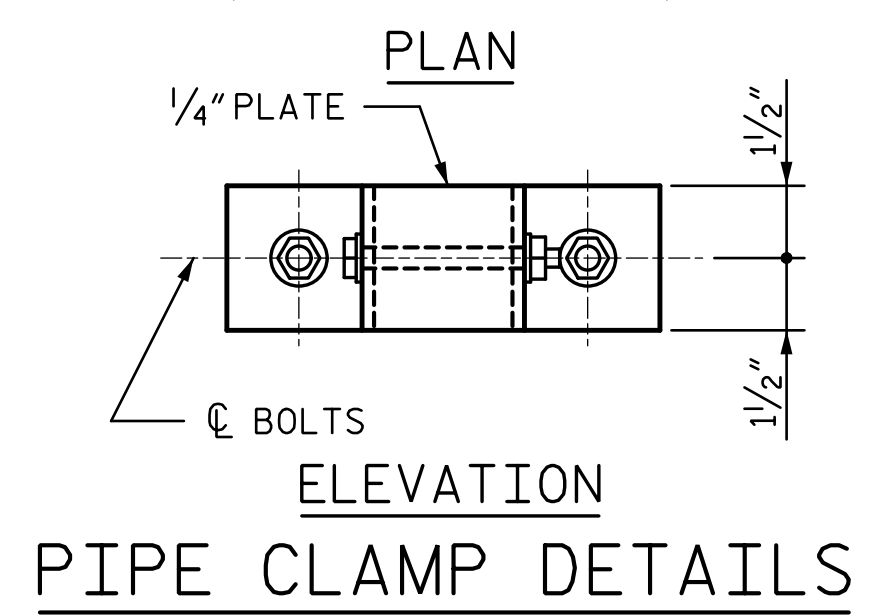
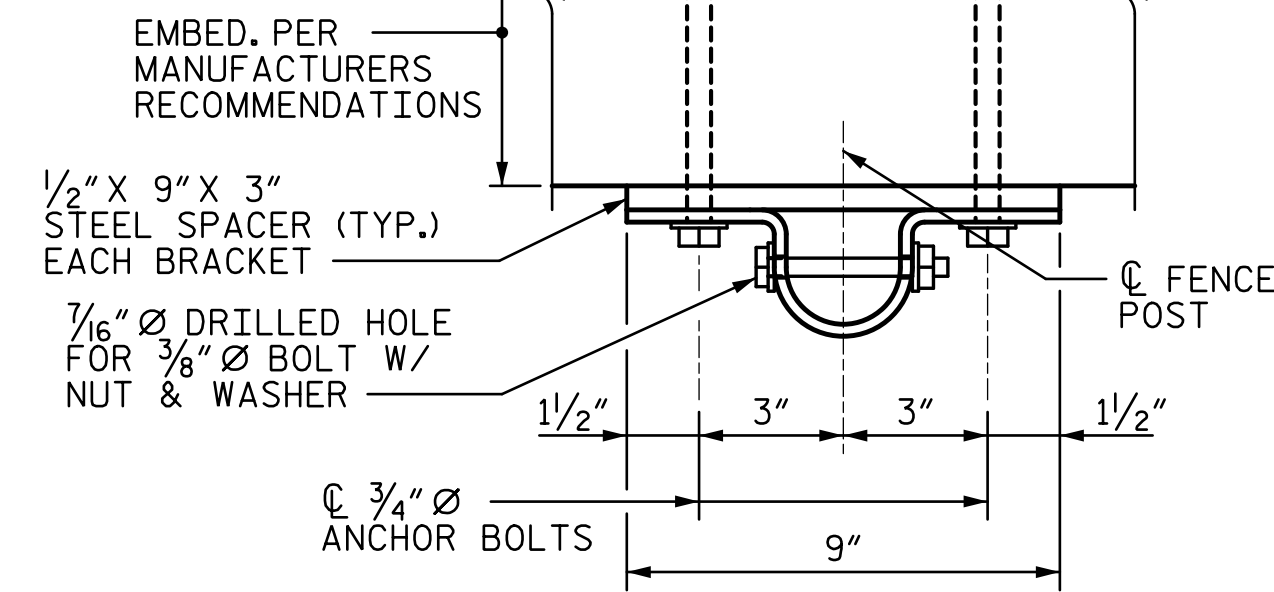
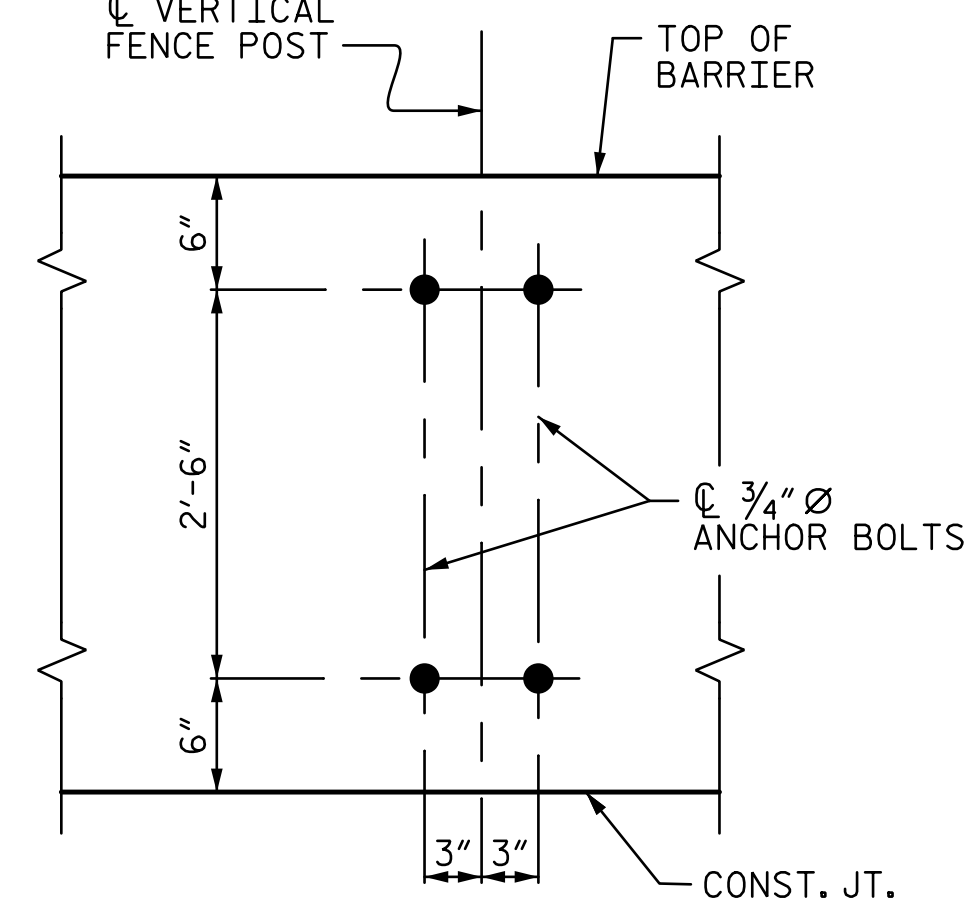
CONTRACTOR SHALL TAKE NECESSARY PRECAUTIONS TO AVOID DAMAGING THE REINFORCING STEEL IN CONCRETE BARRIER RAIL.



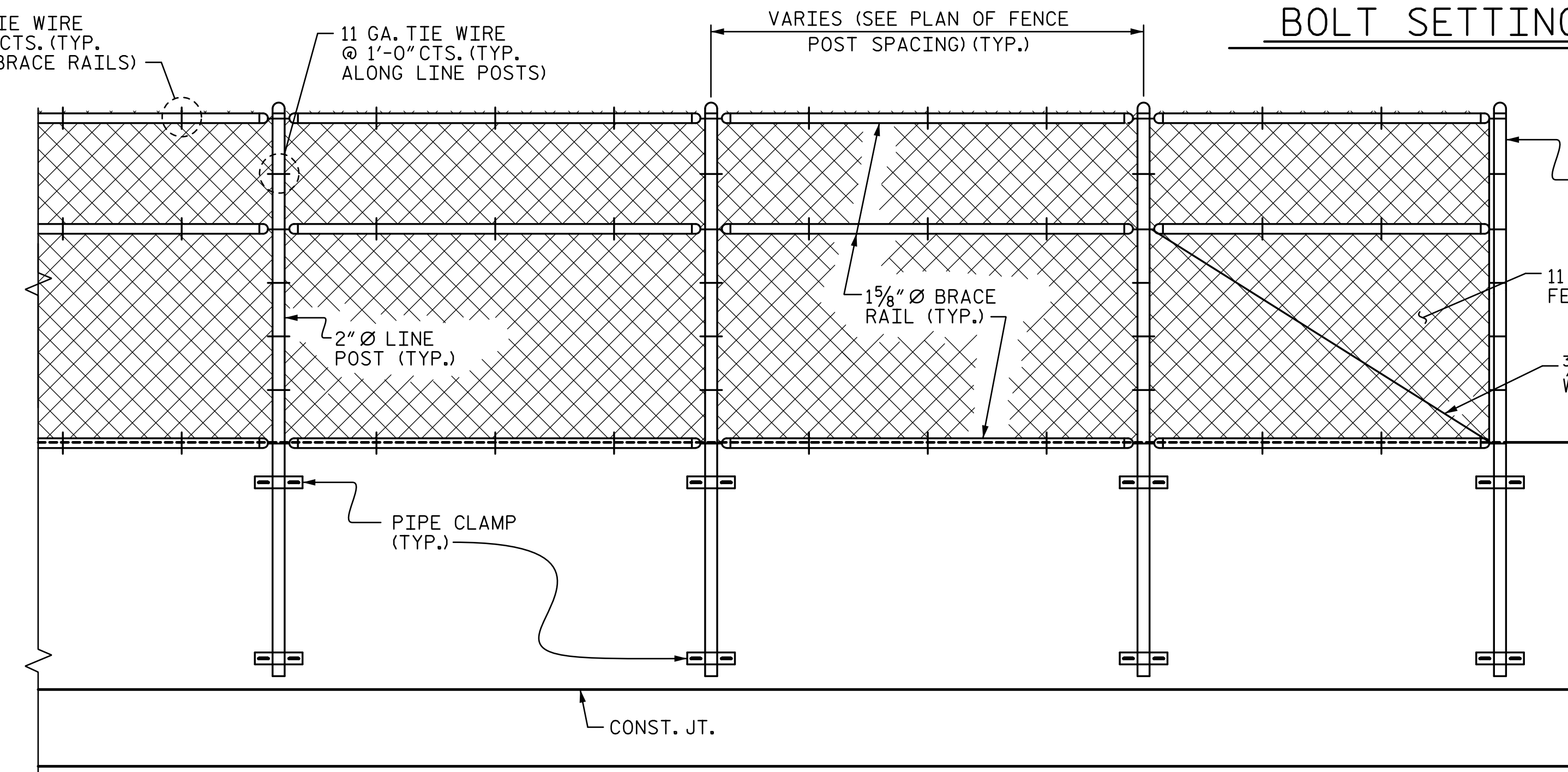
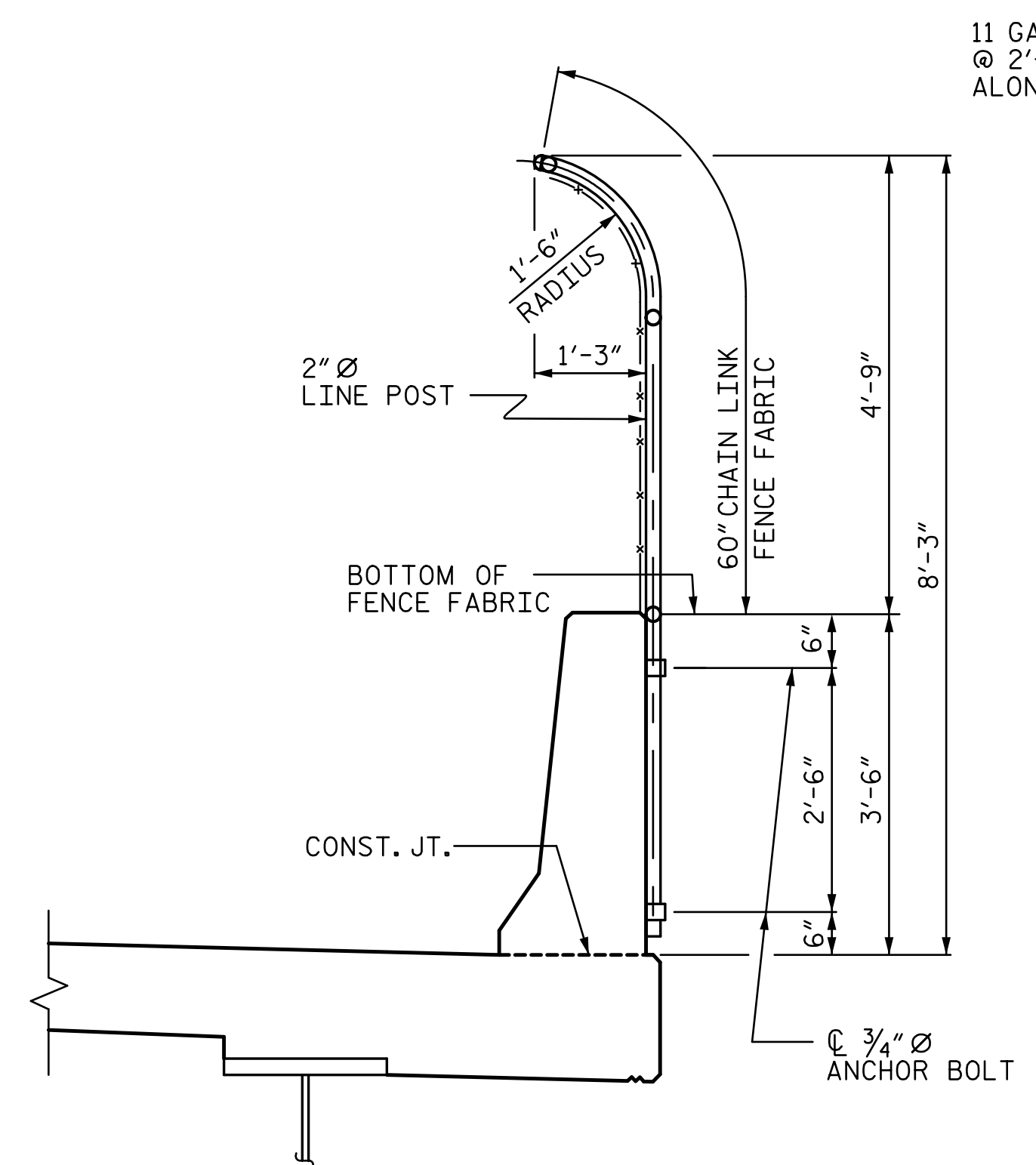
PLAN OF FENCE POST SPACING

PAY LENGTH 428.0 FEET

BOLT SETTING DETAIL



PROJECT NO. R-2707C
CLEVELAND COUNTY
 STATION: 596+50.98 -L-



PARTIAL ELEVATION

SECTION THRU FENCE

STATE OF NORTH CAROLINA
 DEPARTMENT OF TRANSPORTATION
 RALEIGH

SEAL
 40317
 ENGINEER
 TONY R. LAWS, JR.
 12/13/2016

STV ENGINEERS, INC.
 900 West Trade St., Suite 715
 Charlotte, NC 28202
 NC License Number F-5991

REVISIONS

NO.	BY:	DATE:	NO.	BY:	DATE:
1			3		
2			4		

SHEET NO. S8-27
 TOTAL SHEETS 44

DRAWN BY: ATH DATE: 10-16
 CHECKED BY: TRL DATE: 10-16
 DESIGN ENGINEER OF RECORD: T. LAWS DATE: 10-16

12/13/2016 7:03:34 PM R:\408_053_R2707C-SMU_BMCLF_S8-27.dgn