

### NOTES

LATERAL BRACING ASSEMBLY SHALL COMPLY WITH SECTION 1072 OF THE STANDARD SPECIFICATIONS.

ALL STRUCTURAL STEEL SHALL BE AASHTO M270 GRADE 50W OR APPROVED EQUAL.

TENSION ON THE AASHTO M164 BOLTS SHALL BE CALIBRATED USING DIRECT TENSION INDICATOR WASHERS IN ACCORDANCE WITH THE STANDARD SPECIFICATIONS.

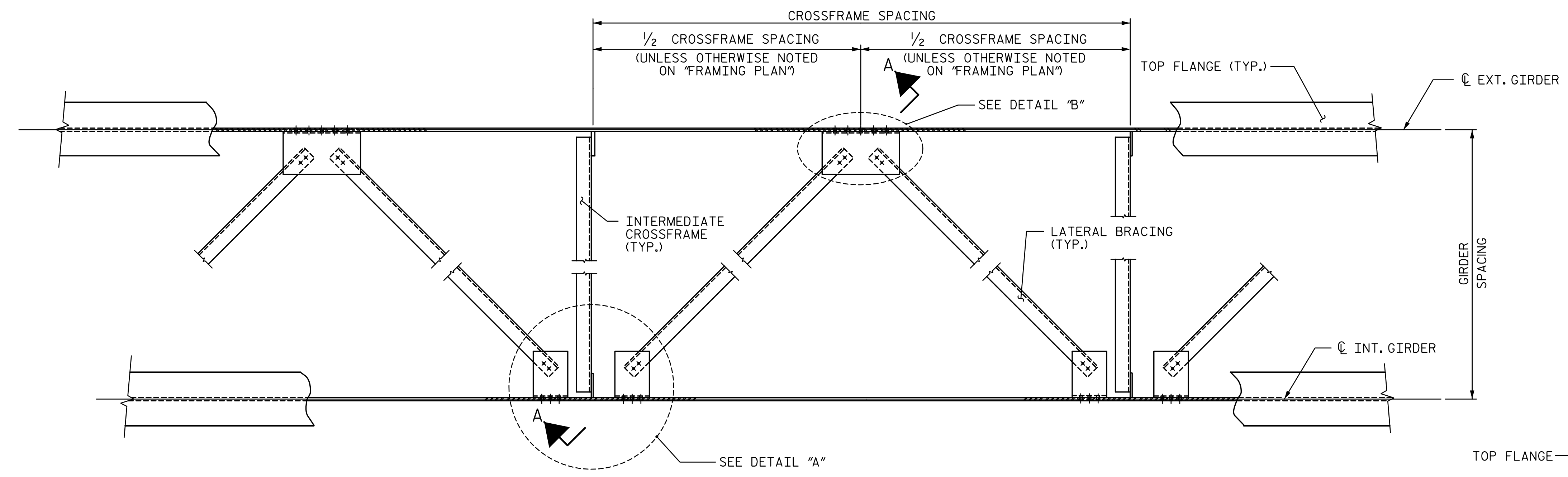
ALL BOLTED CONNECTIONS SHALL BE  $\frac{7}{8}$ "  $\varnothing$  HIGH STRENGTH BOLTS.

THE CONTRACTOR HAS THE OPTION TO CLIP THE PROTRUDING CORNERS OF THE GUSSET PLATES, AT NO ADDITIONAL COST TO THE DEPARTMENT.

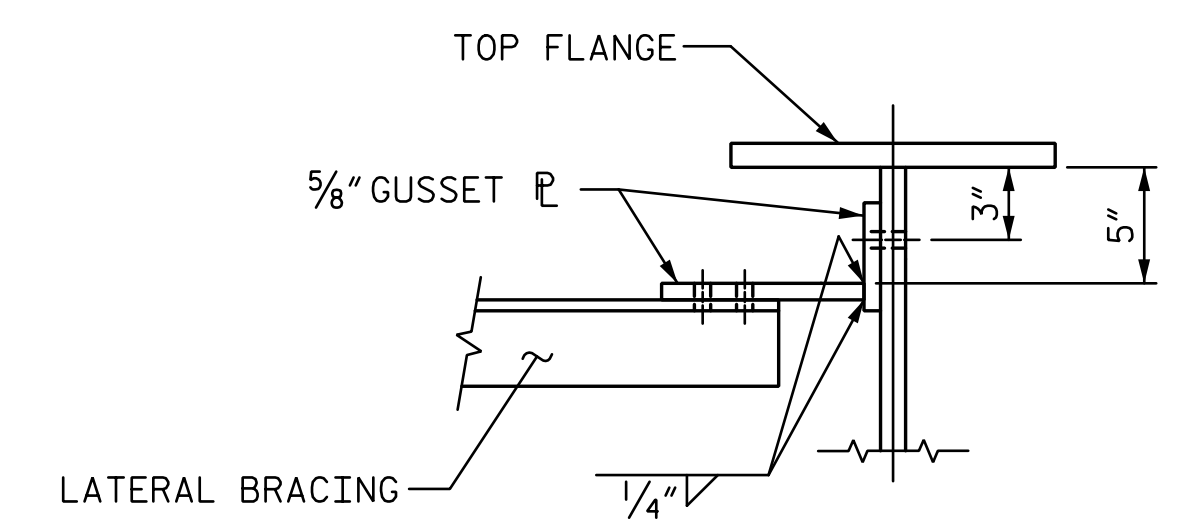
BENT GUSSET PLATES OR ROLLED ANGLE SHAPES MAY BE SUBSTITUTED FOR THE WELDED GUSSET PLATES DETAILED IF APPROVED BY THE ENGINEER, AT NO ADDITIONAL COST TO THE DEPARTMENT.

INSTALL THE LATERAL BRACING AFTER ERECTING THE EXTERIOR GIRDER AND THE ADJACENT INTERIOR GIRDER AND INSTALLING THE INTERMEDIATE CROSSFRAMES.

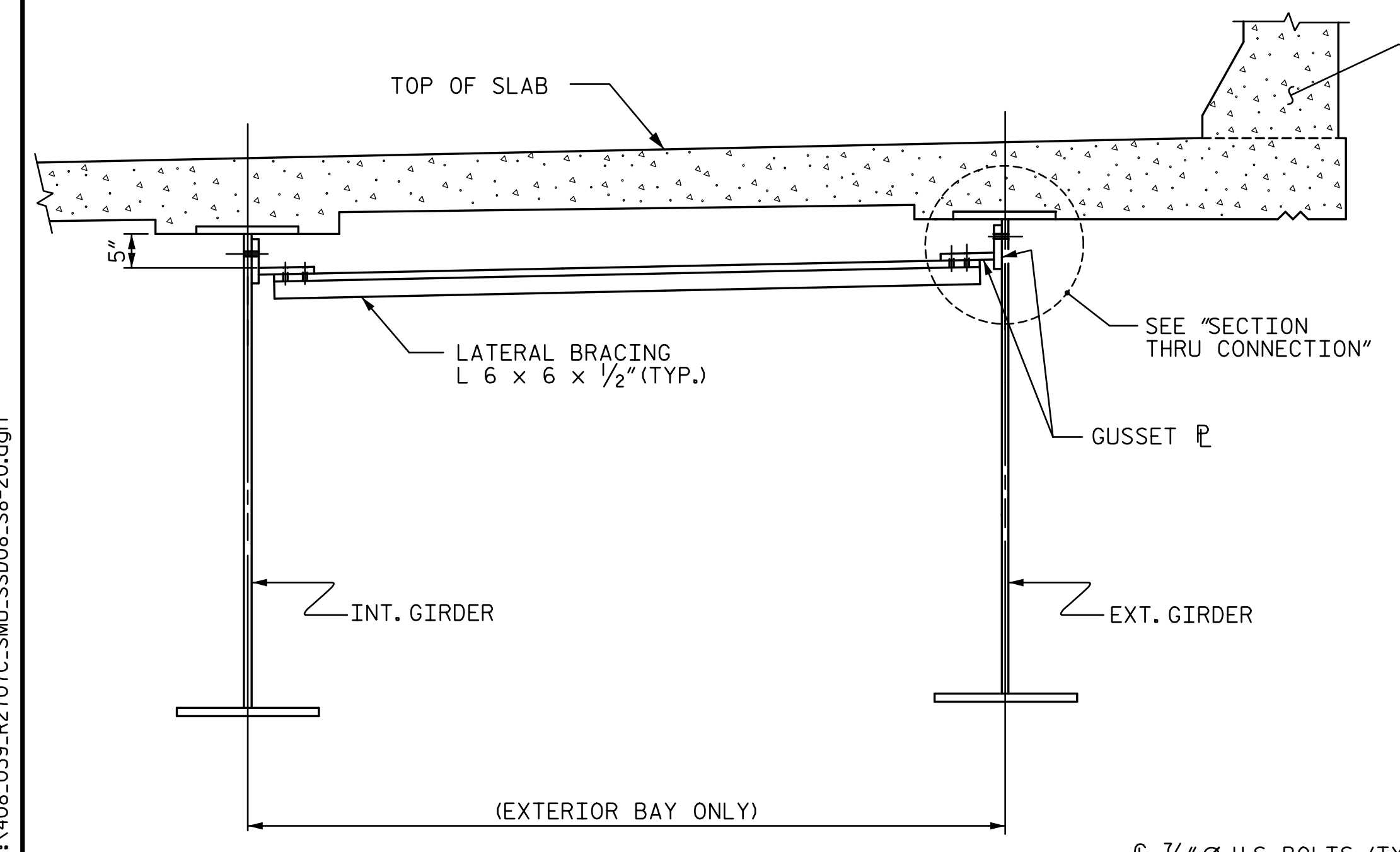
TOP FLANGE LATERAL BRACING DETAILED IS PROVIDED TO ASSIST IN LIMITING GIRDER DISPLACEMENT DURING ERECTION. IT SHALL BE INSTALLED IMMEDIATELY AFTER ERECTION OF EACH PAIR OF GIRDER SECTIONS AT END OF SPAN BENTS. THE DEPARTMENT ASSUMES NO LIABILITY IN THE ERECTION OR STABILIZATION OF THE GIRDERS.



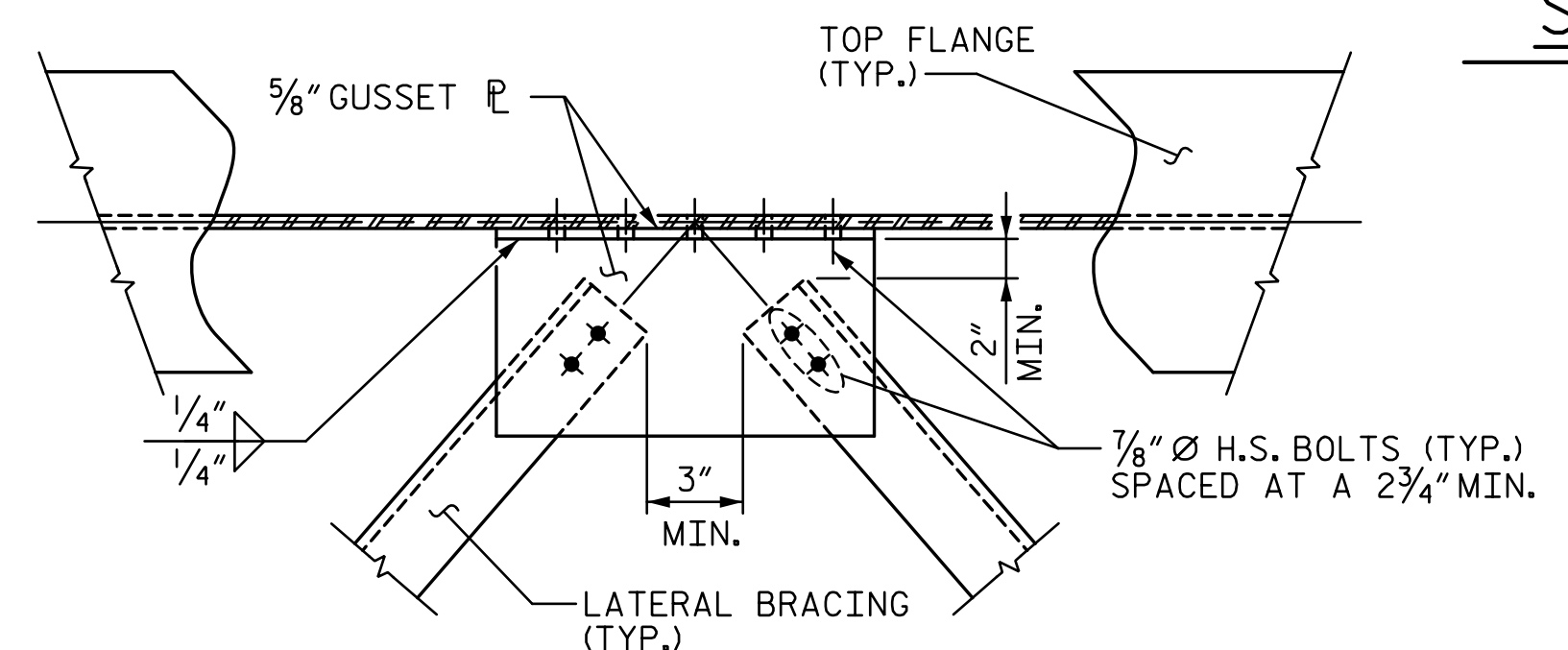
**PART PLAN - NEAR TOP FLANGE LATERAL BRACING**  
(THROUGHOUT EXTERIOR BAYS ONLY)  
(SEE FRAMING PLAN FOR LOCATION AND PLACEMENT OF LATERAL BRACING)



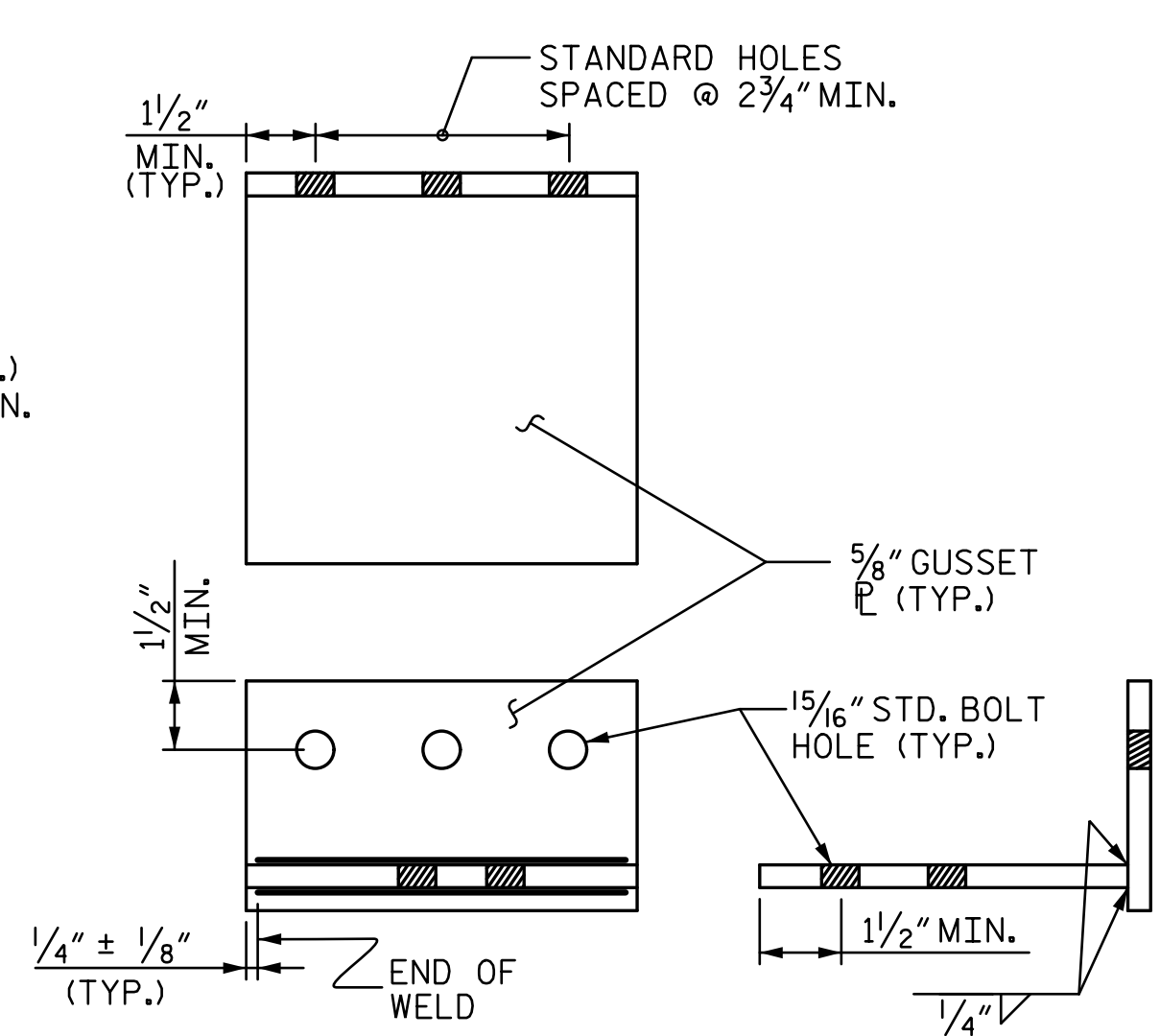
**SECTION THRU CONNECTION**



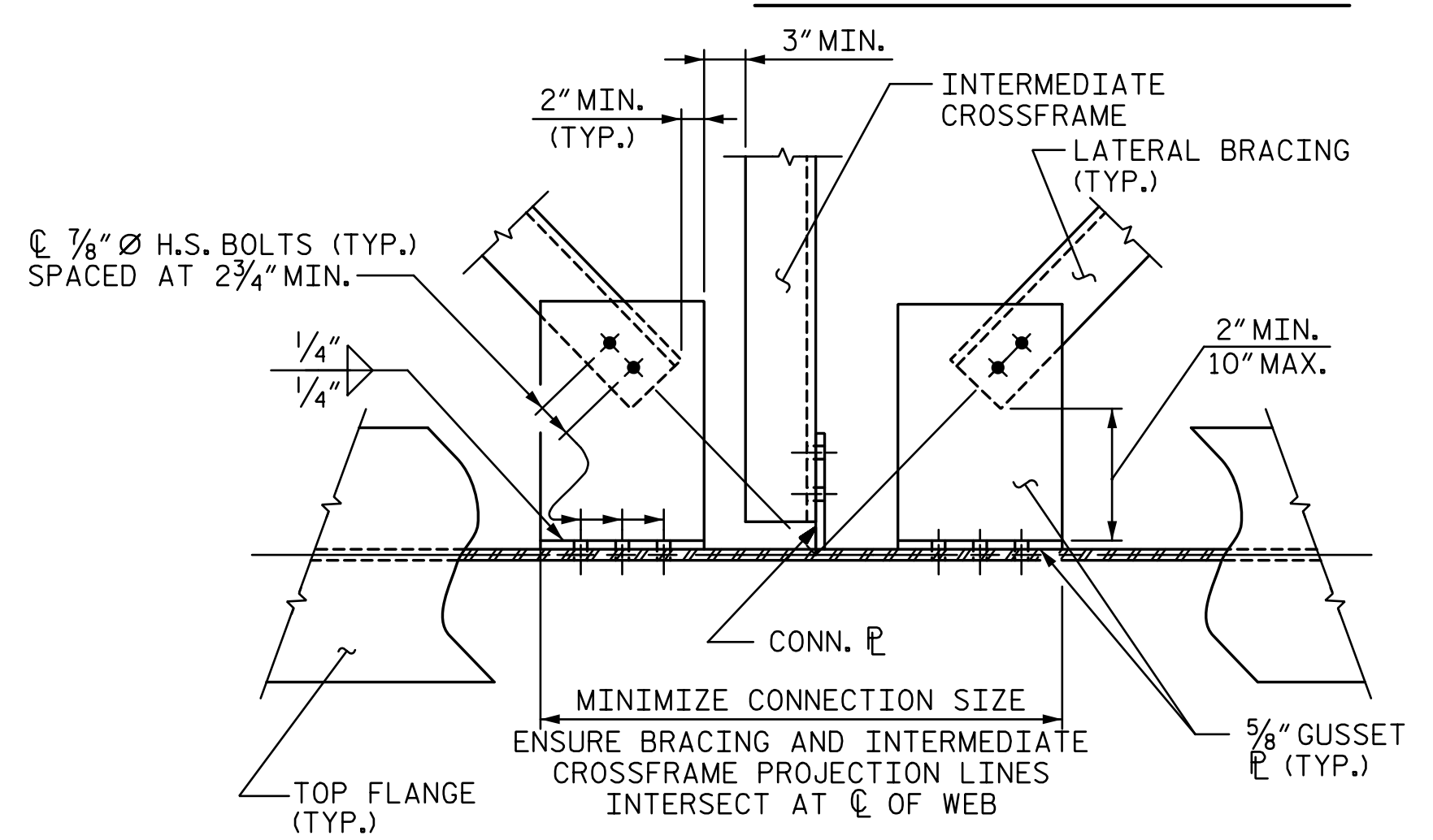
**SECTION A-A**  
(LATERAL BRACING AT TOP FLANGE)



**DETAIL "B"**  
ENSURE BRACING PROJECTION LINES INTERSECT AT C OF WEB



**CONNECTION DETAIL**



**DETAIL "A"**  
(CONNECTOR PLATE WITH INTERMEDIATE CROSSFRAME SHOWN, TRANSVERSE STIFFENER LOCATION SIMILAR)

PROJECT NO. R-2707C  
CLEVELAND COUNTY  
STATION: 596+50.98 -L-  
SHEET 8 OF 8

DOCUMENT NOT CONSIDERED FINAL UNLESS ALL SIGNATURES COMPLETED			STATE OF NORTH CAROLINA DEPARTMENT OF TRANSPORTATION RALEIGH <b>SUPERSTRUCTURE</b> <b>STRUCTURAL STEEL</b> <b>LATERAL BRACING</b> (SITE 6R)		SHEET NO. S8-20
	DocuSigned by: <b>Tony R. Laws, Jr.</b> <small>CA0CE0F6B76AF7 12/13/2016</small>		REVISIONS		TOTAL SHEETS 44
	STV <b>100 Years</b> <small>STV ENGINEERS, INC. 900 West Trade St., Suite 715 Charlotte, NC 28202 NC License Number F-5991</small>	NO. 1 BY: [ ] DATE: [ ]	NO. 2 BY: [ ] DATE: [ ]	NO. 3 BY: [ ] DATE: [ ]	NO. 4 BY: [ ] DATE: [ ]

12/13/2016 7:03:30 PM R:\408\_039\_R2707C\_SMU\_SSD08\_S8-20.dgn

DRAWN BY: <b>VMW</b>	DATE: <b>10-16</b>	DESIGN ENGINEER OF RECORD: <b>V. WU</b>	DATE: <b>10-16</b>
CHECKED BY: <b>TRL</b>	DATE: <b>10-16</b>		