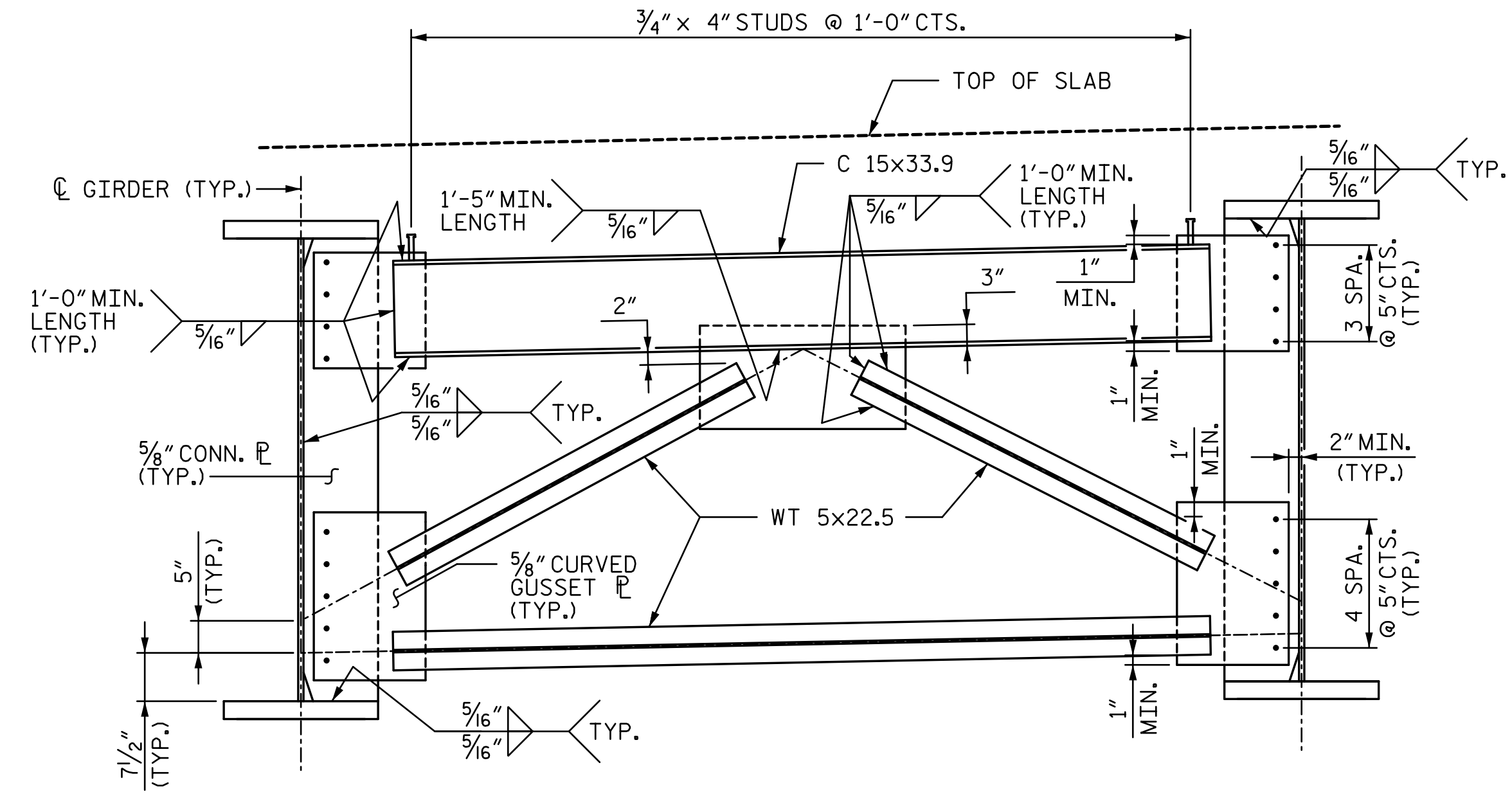


LEFT PLATE
(5/16" CONN. PL., BRG. STIFFENER OR
TRANSVERSE STIFFENER)
(SEE "INTERMEDIATE CROSSFRAME
DETAILS" TABLE AND "FRAMING PLAN"
FOR LOCATION) (TYP.)

RIGHT PLATE
(5/16" CONN. PL., BRG. STIFFENER OR
TRANSVERSE STIFFENER)
(SEE "INTERMEDIATE CROSSFRAME
DETAILS" TABLE AND "FRAMING PLAN"
FOR LOCATION) (TYP.)

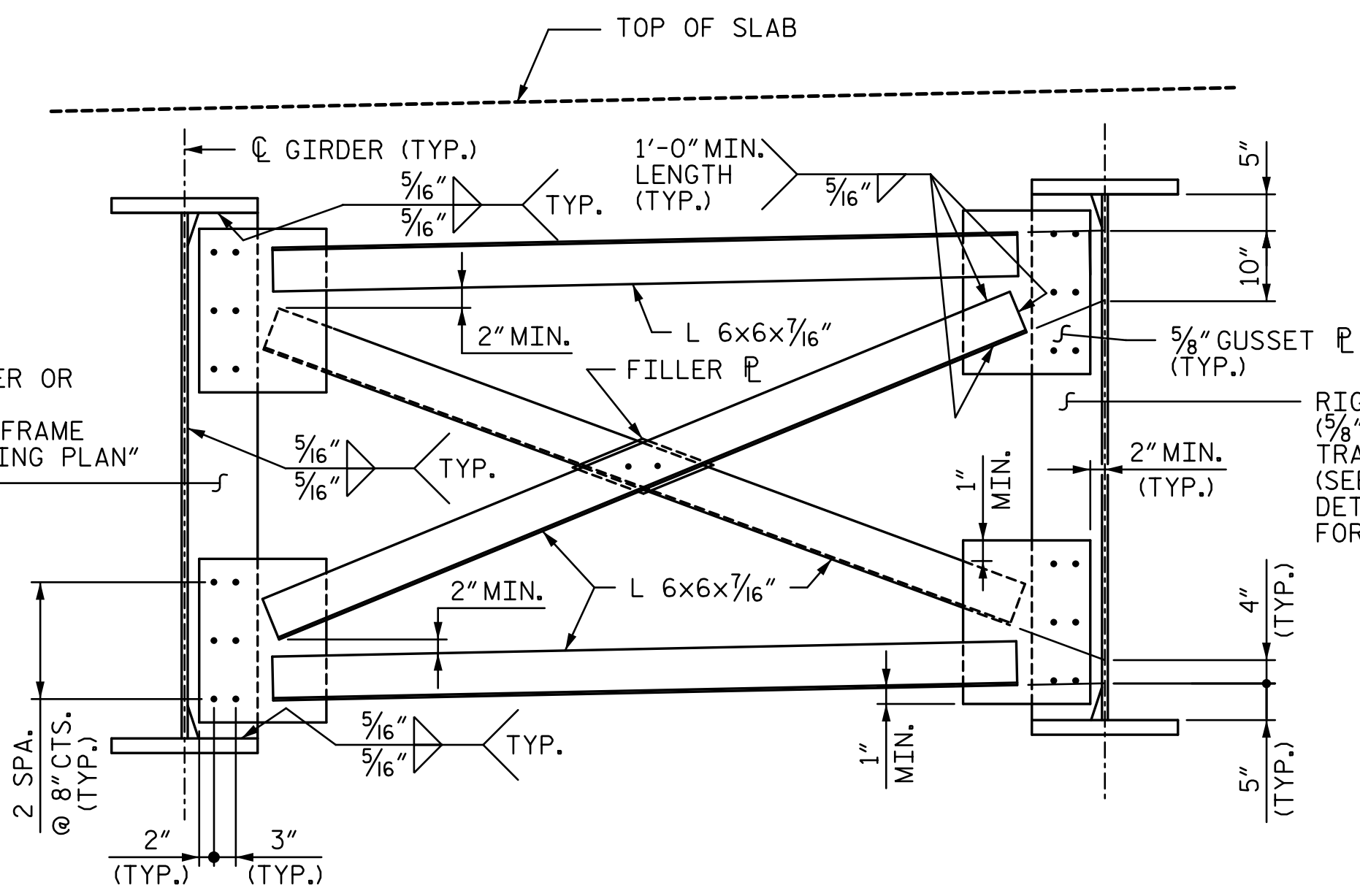
INTERMEDIATE CROSSFRAME
(CROSSFRAME CF2 SHOWN, OTHERS SIMILAR)



1'-0" MIN.
LENGTH
(TYP.)

END CROSSFRAME (CF1)
(SEE "FRAMING PLAN" FOR LOCATIONS)

INTERMEDIATE CROSSFRAME DETAILS		
CROSSFRAME TYPE	LEFT PLATE	RIGHT PLATE
CF2	CONNECTOR PL	CONNECTOR PL
CF3	TRANSVERSE STIFFENER	TRANSVERSE STIFFENER
CF4	BRG. STIFFENER	BRG. STIFFENER



LEFT PLATE
(5/16" CONN. PL., BRG. STIFFENER OR
TRANSVERSE STIFFENER)
(SEE "INTERMEDIATE CROSSFRAME
DETAILS" TABLE AND "FRAMING PLAN"
FOR LOCATION) (TYP.)

RIGHT PLATE
(5/16" CONN. PL., BRG. STIFFENER OR
TRANSVERSE STIFFENER)
(SEE "INTERMEDIATE CROSSFRAME
DETAILS" TABLE AND "FRAMING PLAN"
FOR LOCATION) (TYP.)

OPTIONAL INTERMEDIATE CROSSFRAME

NOTE: AT THE CONTRACTORS OPTION, THE DIAPHRAGM WITH THE WELDED GUSSET PLATES MAY BE USED IN LIEU OF THE CROSSFRAME WITH BOLTED ANGLES AT NO ADDITIONAL COST TO THE DEPARTMENT.

PROJECT NO. R-2707C
CLEVELAND COUNTY
STATION: 596+50.98 -L-
SHEET 3 OF 8

DOCUMENT NOT CONSIDERED FINAL UNLESS ALL SIGNATURES COMPLETED		STATE OF NORTH CAROLINA DEPARTMENT OF TRANSPORTATION RALEIGH SUPERSTRUCTURE STRUCTURAL STEEL CROSSFRAME DETAILS (SITE 6R)																			
	DocuSigned by: Tony R. Laws, Jr. CARCE06FB76AF7 12/13/2016	REVISIONS <table border="1"> <tr> <th>NO.</th> <th>BY:</th> <th>DATE:</th> <th>NO.</th> <th>BY:</th> <th>DATE:</th> </tr> <tr> <td>1</td> <td></td> <td></td> <td>3</td> <td></td> <td></td> </tr> <tr> <td>2</td> <td></td> <td></td> <td>4</td> <td></td> <td></td> </tr> </table>	NO.	BY:	DATE:	NO.	BY:	DATE:	1			3			2			4			SHEET NO. SB-15 TOTAL SHEETS 44
	NO.	BY:	DATE:	NO.	BY:	DATE:															
1			3																		
2			4																		
STV ENGINEERS, INC. 900 West Trade St., Suite 715 Charlotte, NC 28202 NC License Number F-5991																					

12/13/2016 7:03:27 PM R:\408_029_R2707C_SML_SSD03_SB-15.dgn

DRAWN BY: VMW DATE: 10-16 DESIGN ENGINEER OF RECORD: V. WU DATE: 10-16
 CHECKED BY: TRL DATE: 10-16