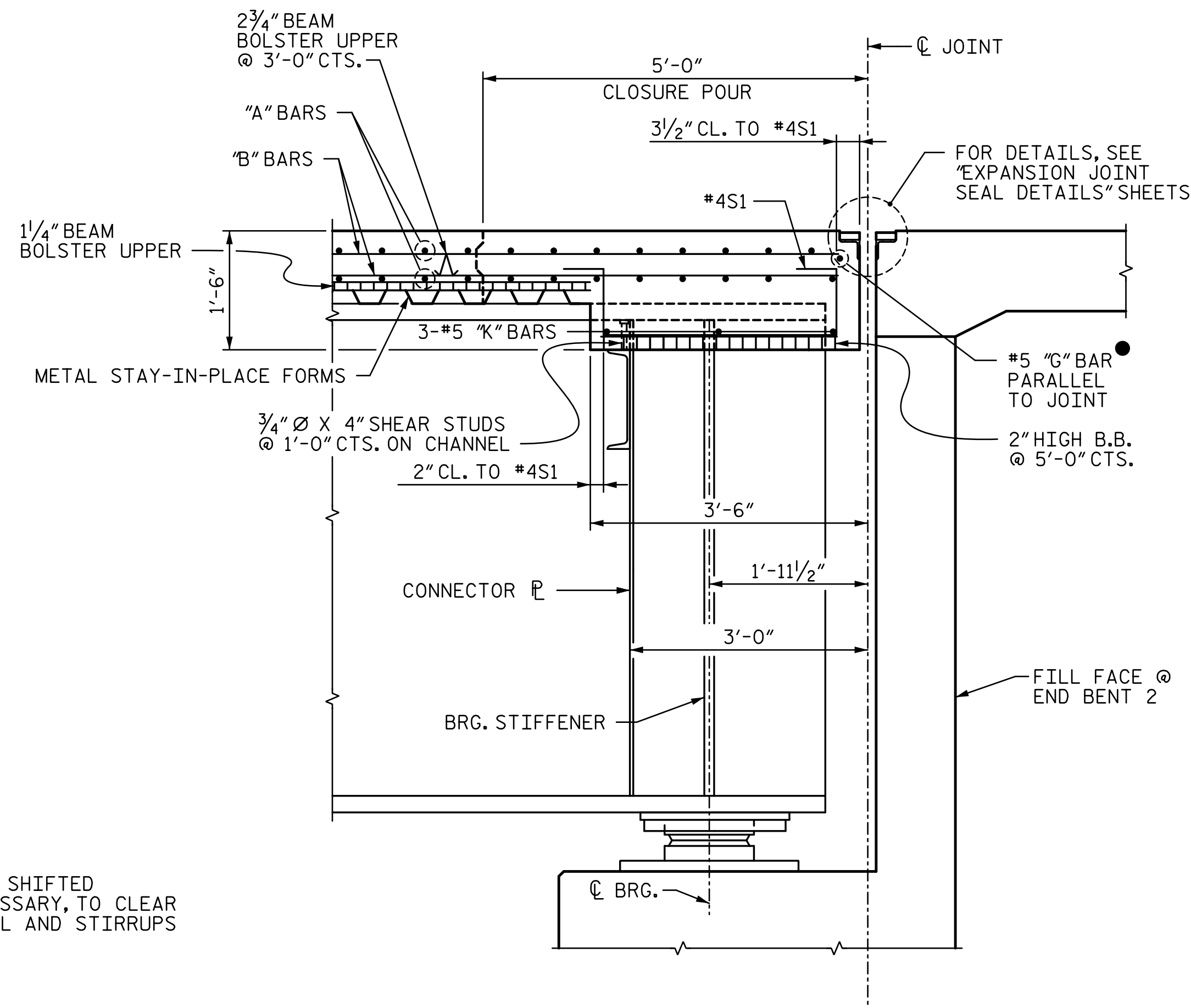
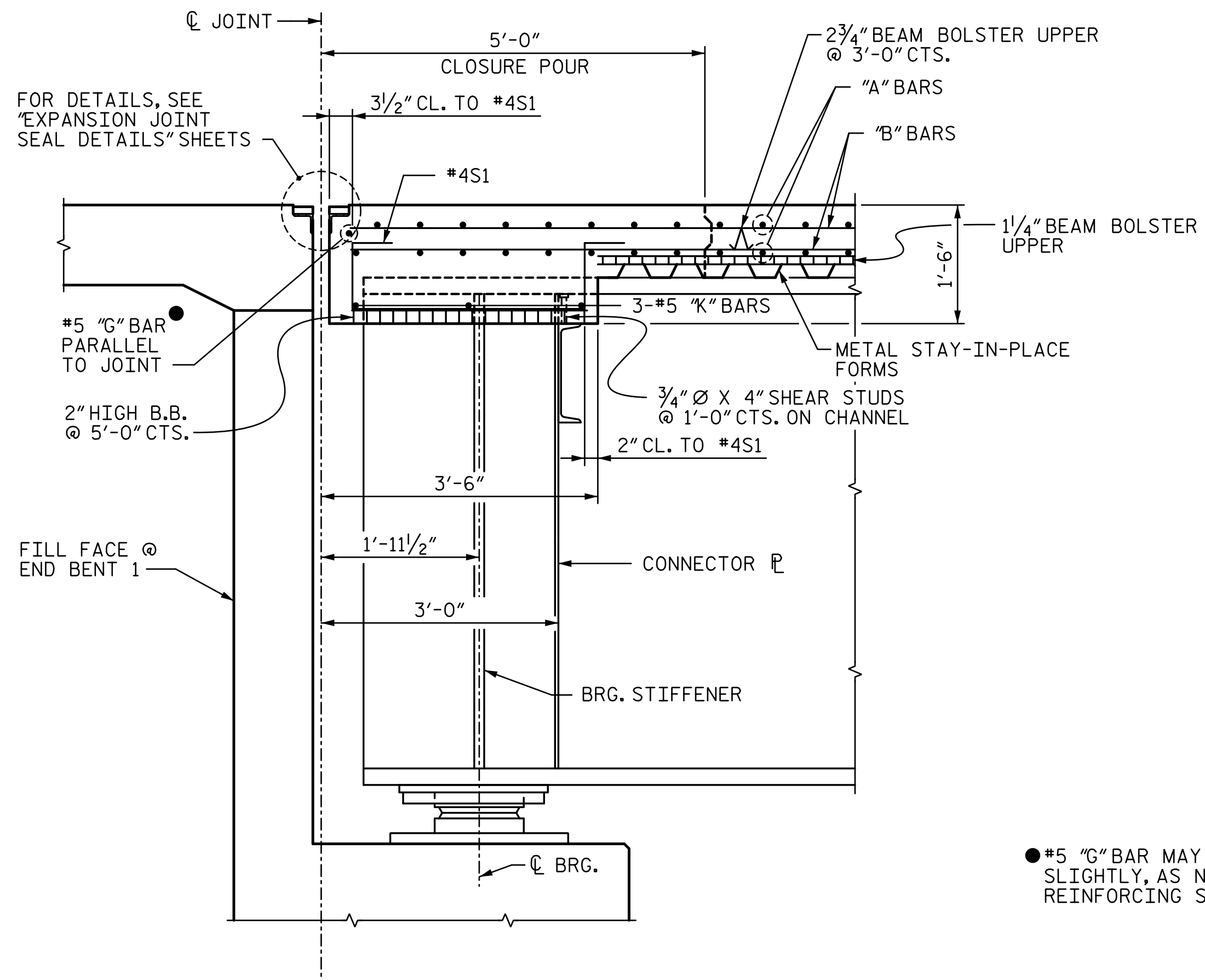


NOTES:

1. DIAPHRAGM DIMENSIONS ARE BASED ON 1" JOINT OPENING. CONTRACTOR SHALL ADJUST DIMENSIONS BASED ON THE "MOVEMENT AND SETTING AT JOINT" TABLE ON "EXPANSION JOINT SEAL DETAILS" SHEET 1 OF 2.



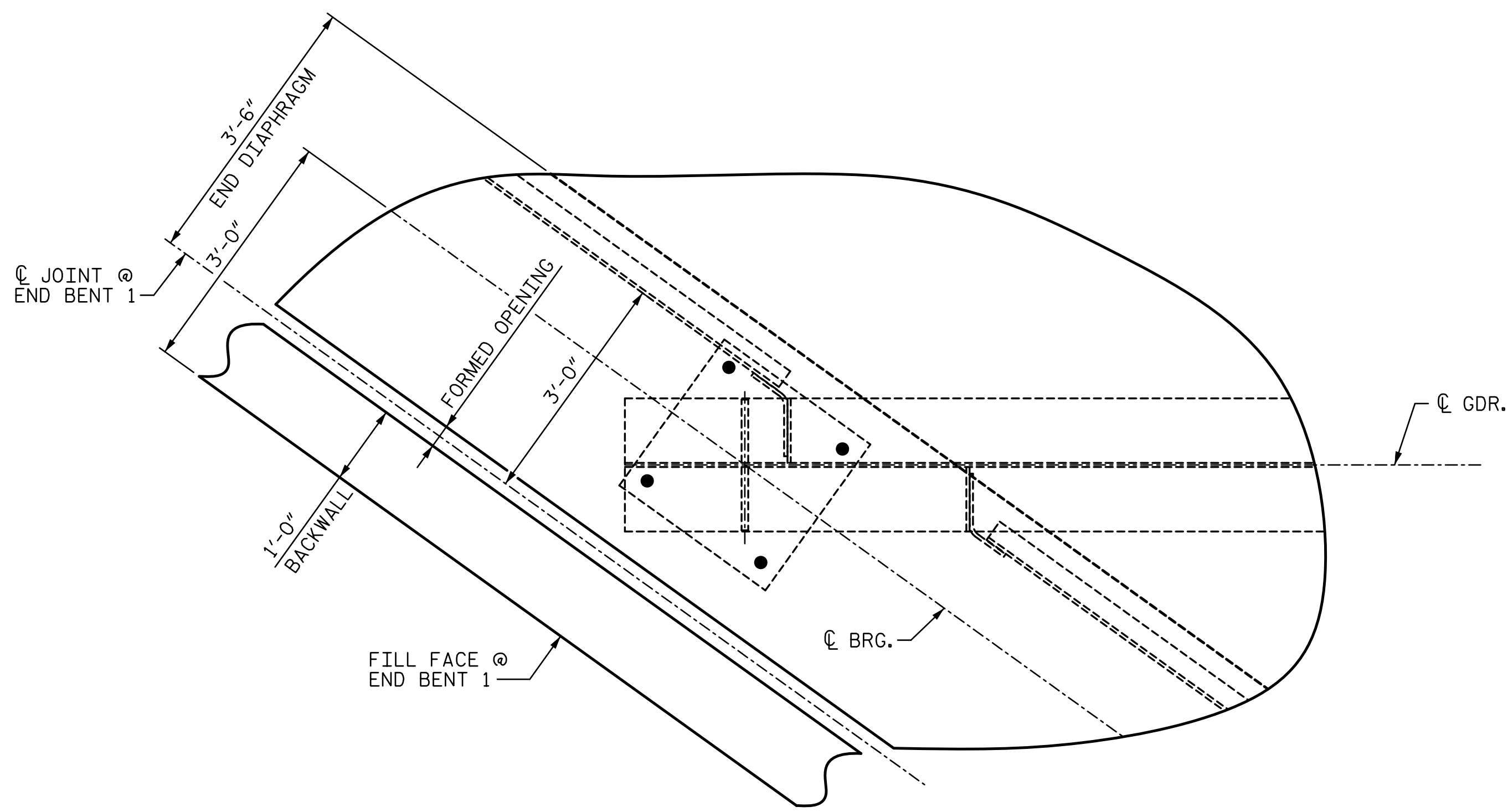
● #5 "G" BAR MAY BE SHIFTED SLIGHTLY, AS NECESSARY, TO CLEAR REINFORCING STEEL AND STIRRUPS

SECTION A-A

END DIAPHRAGMS AT END BENT 1
(*"J" BAR USED WITH STANDARD EXP. JT. NOT SHOWN)

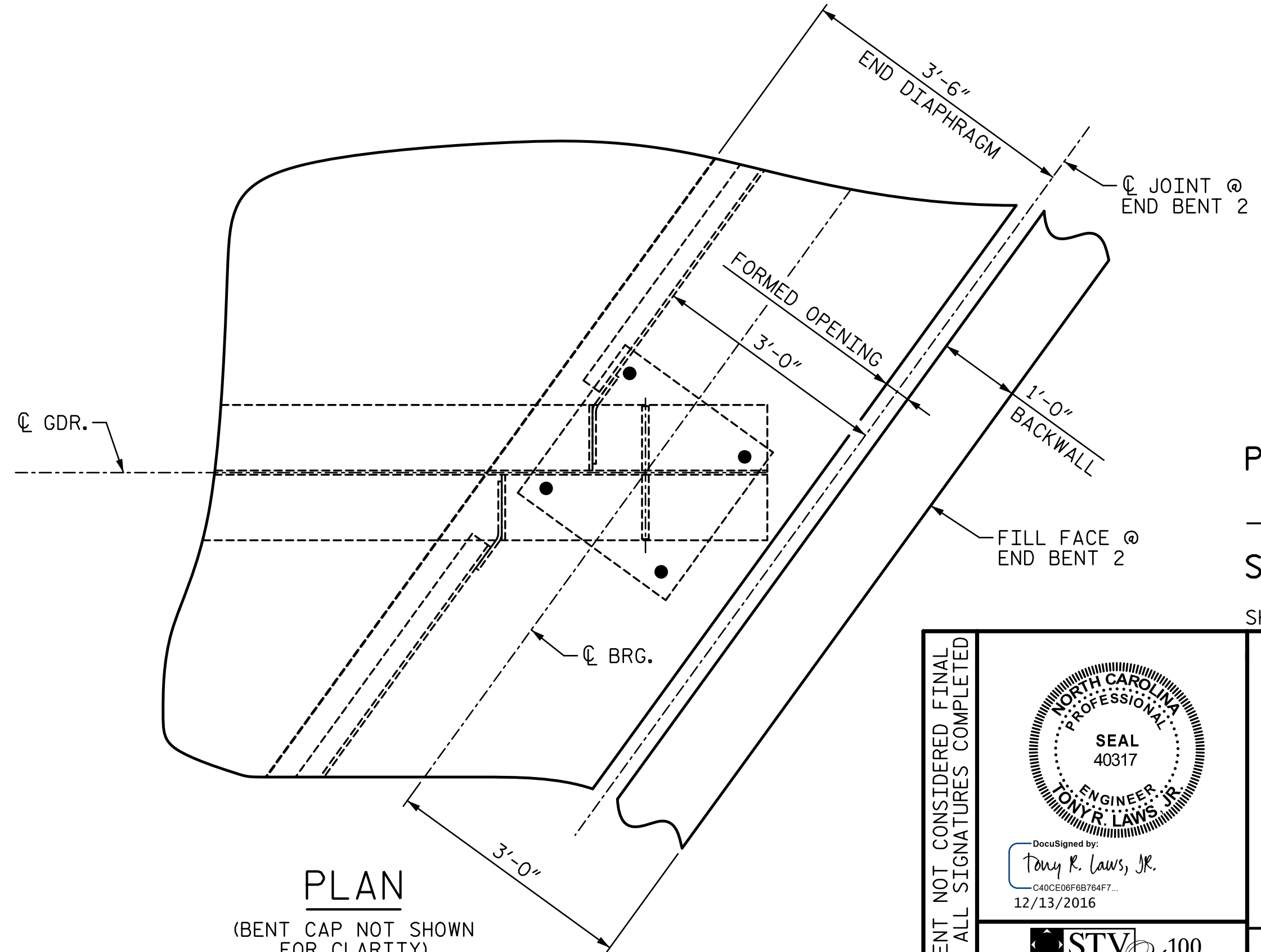
SECTION B-B

END DIAPHRAGMS AT END BENT 2
(*"J" BAR USED WITH STANDARD EXP. JT. NOT SHOWN)



PLAN

(BENT CAP NOT SHOWN FOR CLARITY)



PLAN

(BENT CAP NOT SHOWN FOR CLARITY)

PROJECT NO. R-2707C

CLEVELAND COUNTY

STATION: 596+50.98 -L-

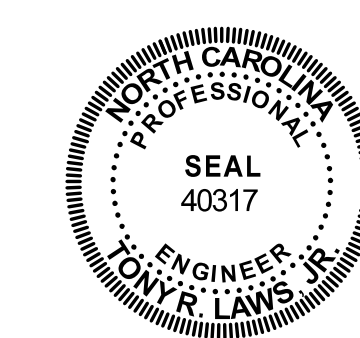
SHEET 2 OF 2

STATE OF NORTH CAROLINA
DEPARTMENT OF TRANSPORTATION
RALEIGH

SUPERSTRUCTURE
SUPERSTRUCTURE
DETAILS

(SITE 6R)

DOCUMENT NOT CONSIDERED FINAL UNLESS ALL SIGNATURES COMPLETED



DocuSigned by:
Tony R. Laws, Jr.
CARC00F6B76AF7
12/13/2016

STV 100 years
STV ENGINEERS, INC.
900 West Trade St., Suite 715
Charlotte, NC 28202
NC License Number F-5991

REVISIONS				SHEET NO.	
NO.	BY:	DATE:	NO.	BY:	DATE:
1			3		
2			4		

TOTAL SHEETS: 44

12/13/2016 7:03:23 PM R:\408_013_R2707C-SMJ_SD_S8-7.dgn

DRAWN BY: MBC DATE: 10-16
CHECKED BY: JTG DATE: 10-16
DESIGN ENGINEER OF RECORD: V. WU DATE: 10-16