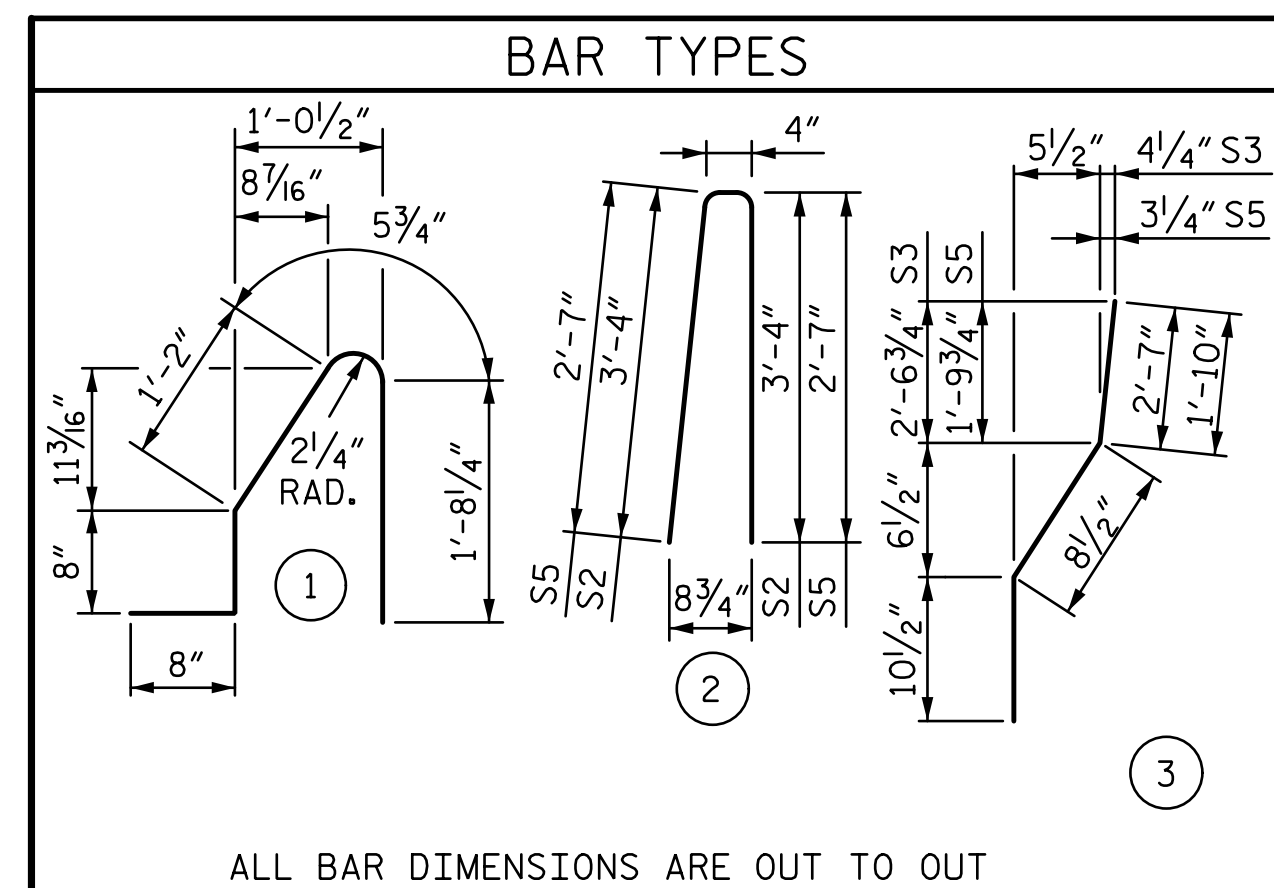


NOTES:
 1. FOR ADDITIONAL DETAILS AND NOTES, SEE "CONCRETE BARRIER RAIL" SHEETS.

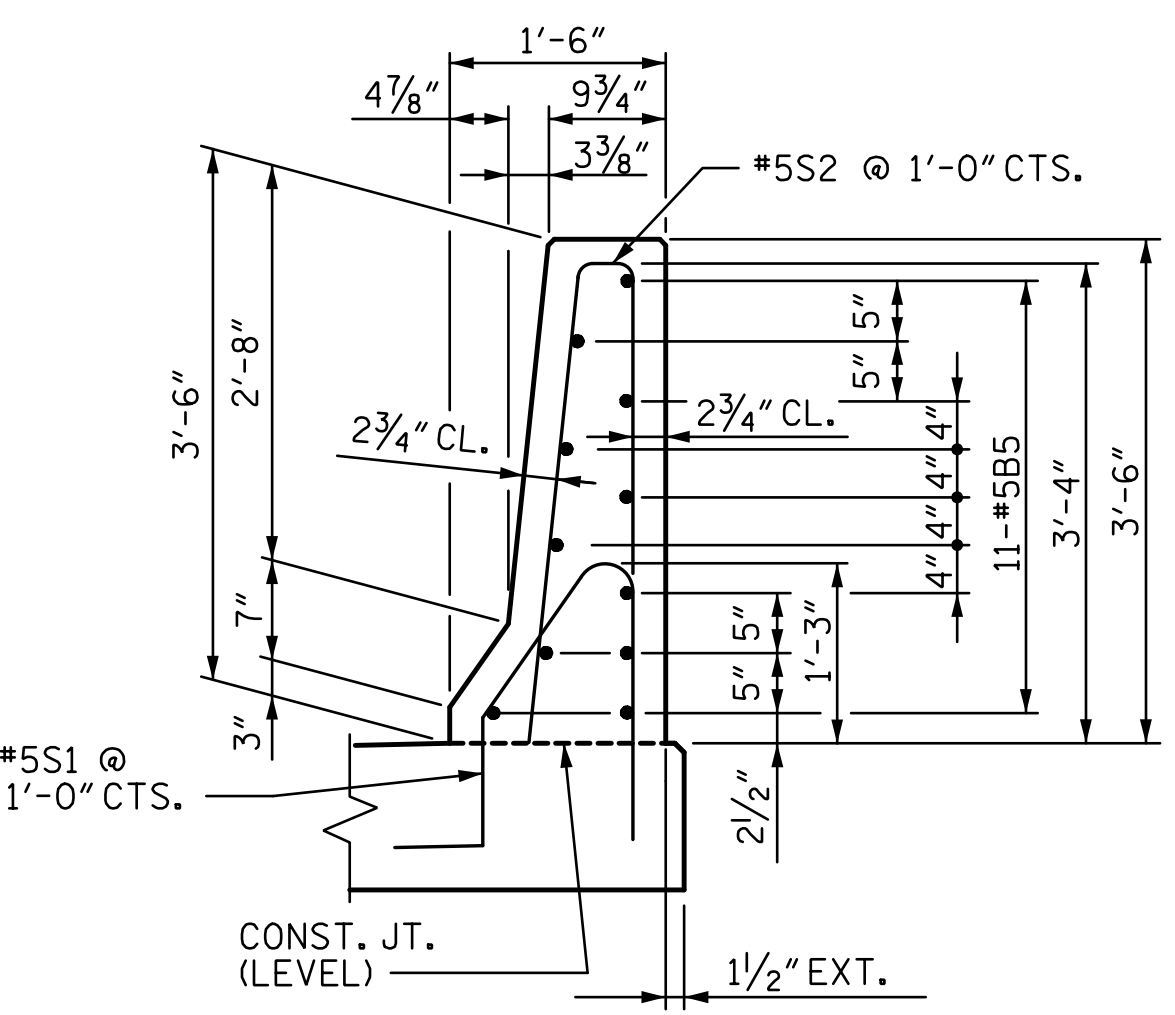
END BENT 1

END BENT 2

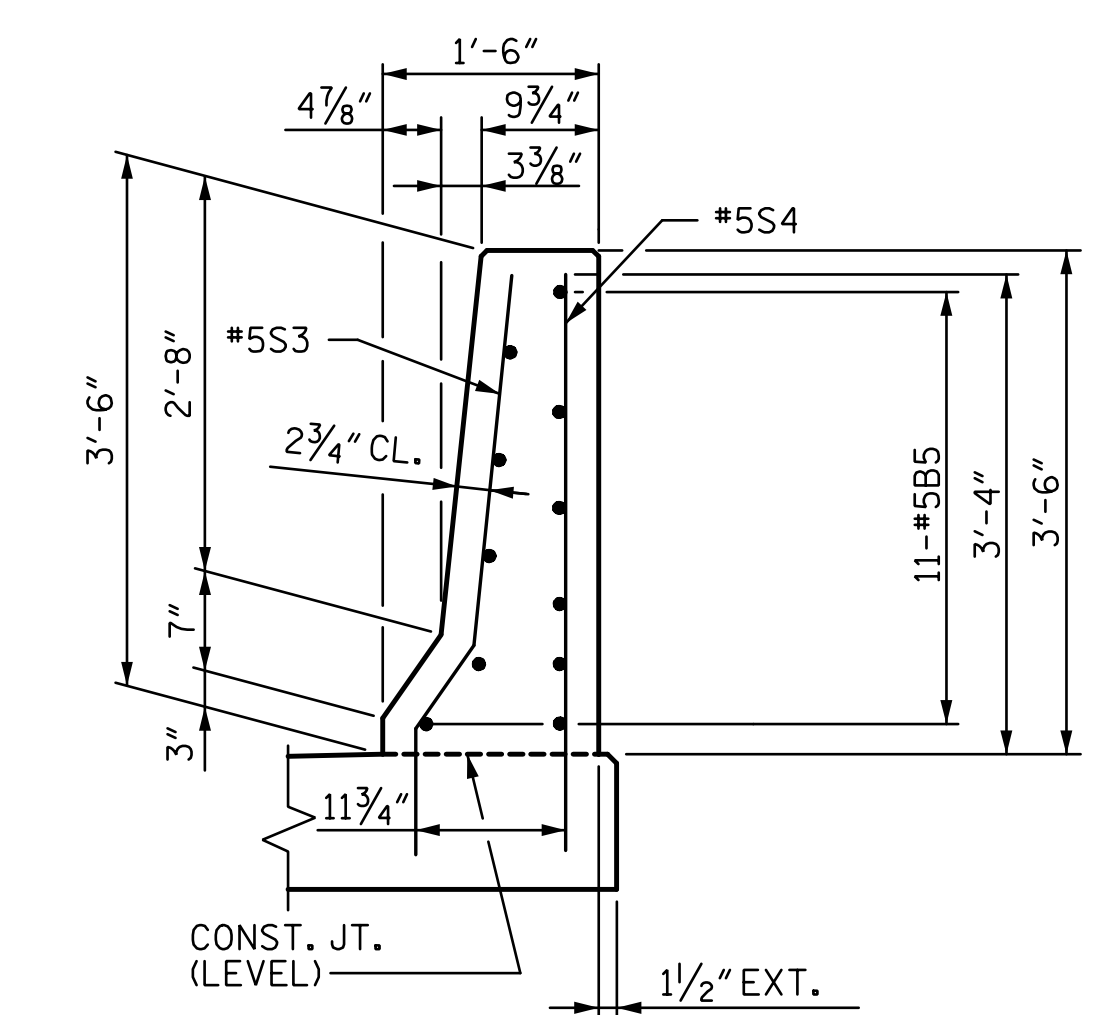


ALL BAR DIMENSIONS ARE OUT TO OUT

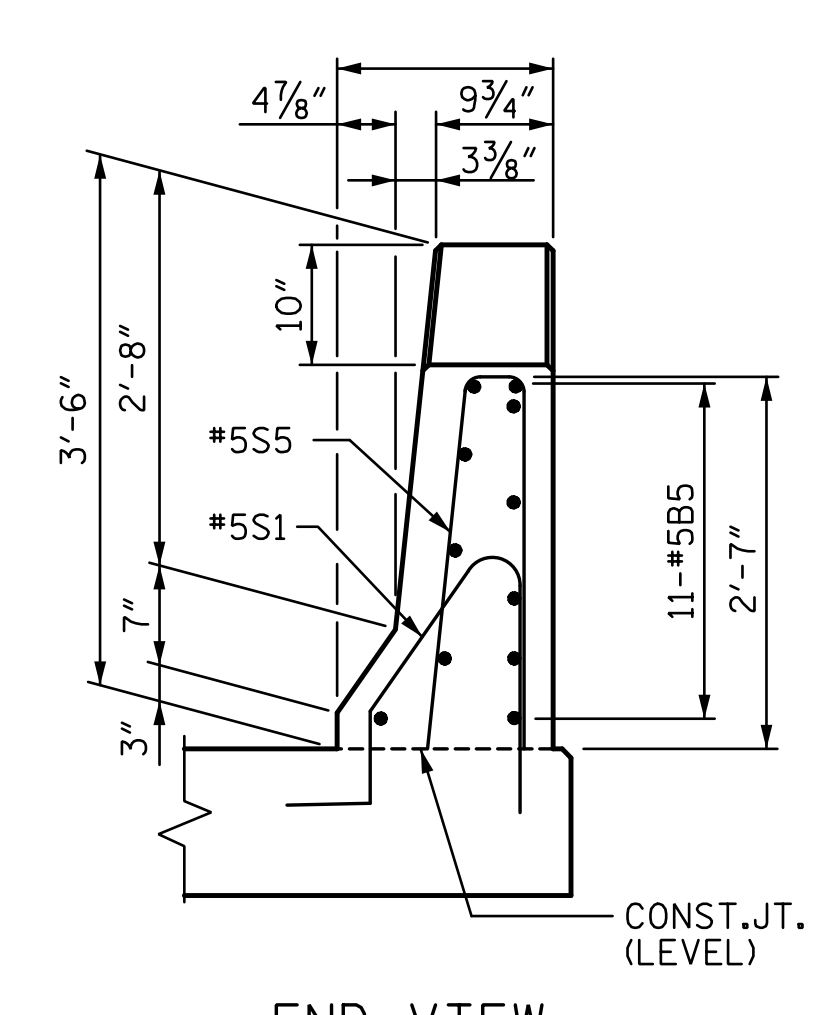
BILL OF MATERIAL					
BARRIER RAIL ONLY					
BAR	NO.	SIZE	TYPE	LENGTH	WEIGHT
*B5	88	#5	STR	7'-2"	658
*S1	43	#5	①	4'-8"	209
*S2	35	#5	②	7'-0"	256
*S3	4	#5	③	4'-2"	17
*S4	5	#5	STR	4'-0"	21
*S5	8	#5	②	5'-6"	46
				EPOXY COATED REINFORCING STEEL	LBS. 1,207
				CLASS AA CONCRETE	C. Y. 5.9
				CONCRETE BARRIER RAIL	43.4 LIN. FT.



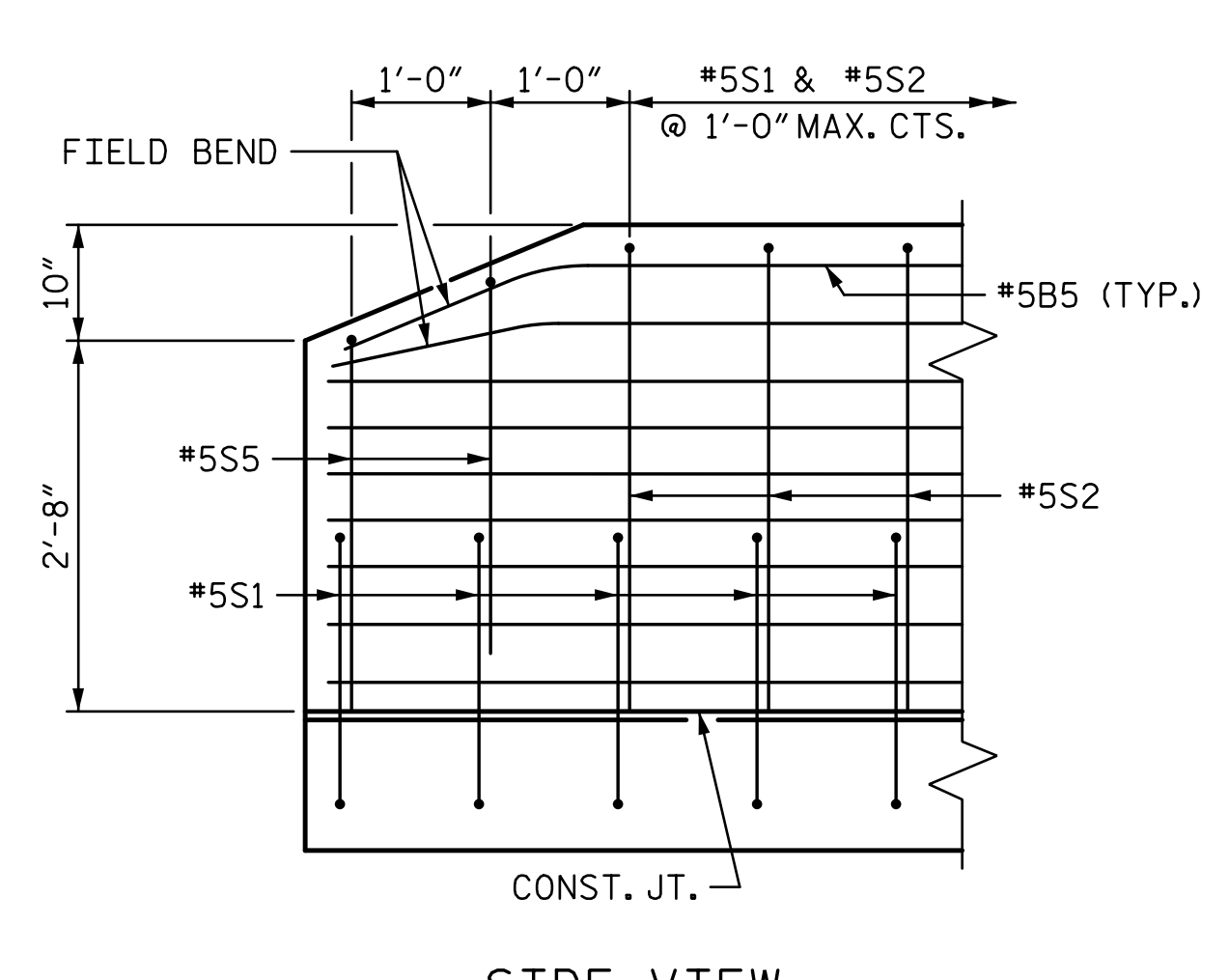
SECTION THRU RAIL



SECTION AT JOINT

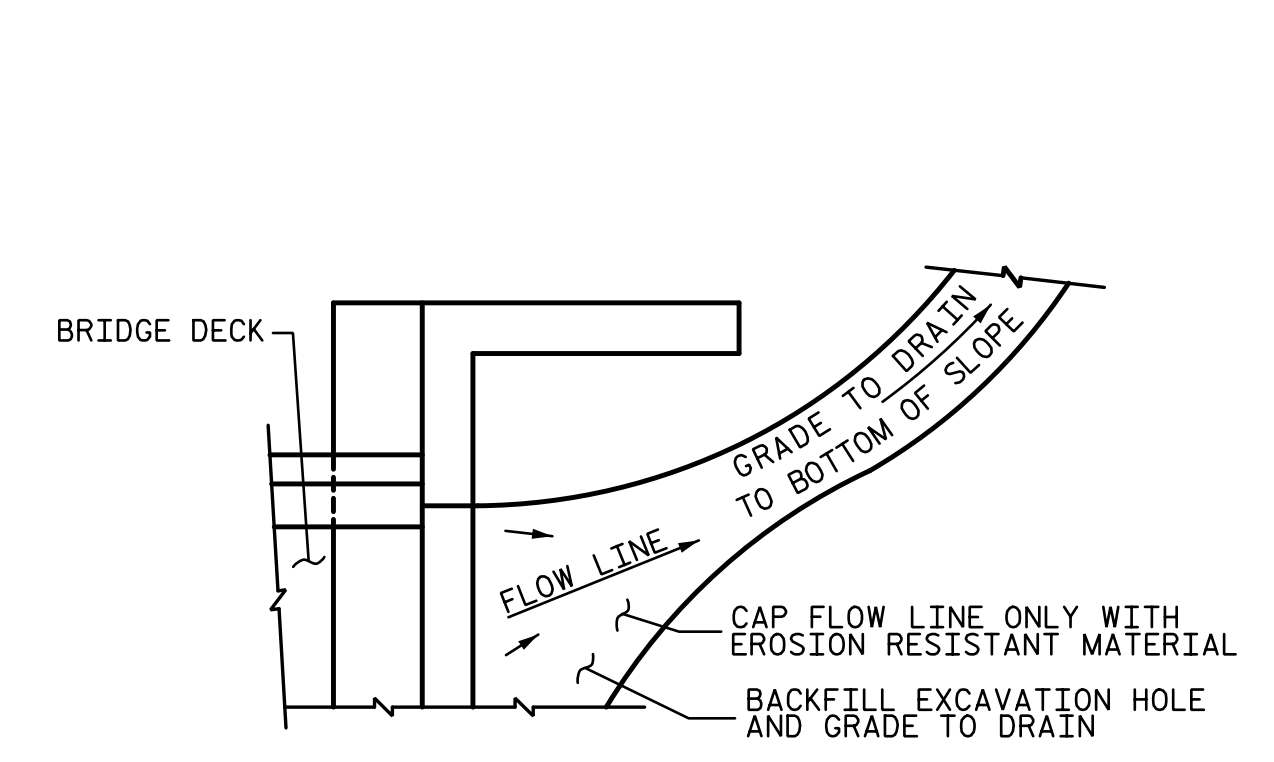


END VIEW



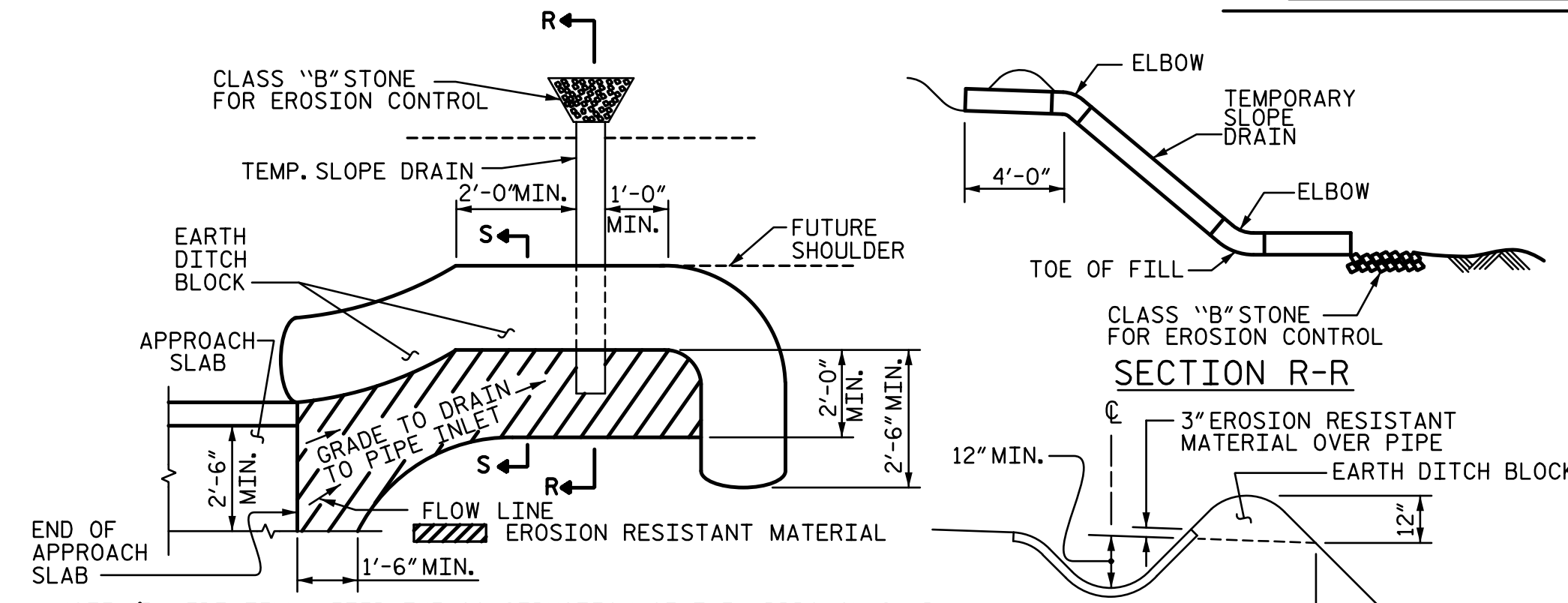
SIDE VIEW

END OF RAIL DETAILS



NOTE: IF THE APPROACH SLAB IS NOT CONSTRUCTED IMMEDIATELY AFTER THE BACKFILLING OF THE END BENT EXCAVATION, GRADE TO DRAIN TO THE BOTTOM OF THE SLOPE AND PROVIDE EROSION RESISTANT MATERIAL, SUCH AS FIBERGLASS ROVING OR AS DIRECTED BY THE ENGINEER TO PREVENT SOIL EROSION AND TO PROTECT THE AREA ADJACENT TO THE STRUCTURE. THE CONTRACTOR WILL BE REQUIRED TO REMOVE THESE MATERIALS PRIOR TO CONSTRUCTION OF THE APPROACH SLAB.

TEMPORARY DRAINAGE DETAIL



NOTE: IMMEDIATELY AFTER THE CONSTRUCTION OF THE APPROACH SLAB, THE CONTRACTOR SHALL PROVIDE TEMPORARY BERM AND SLOPE DRAIN. CONTRACTOR SHALL GRADE TO PIPE INLET AND PROVIDE EROSION RESISTANT MATERIAL AS SHOWN. THE EROSION RESISTANT MATERIAL SHALL BE EITHER 1) ASPHALT PLANT MIX, TYPE 1 OR TYPE 2, MIN. 2" DEPTH, 2) EROSION CONTROL MAT, OR 3) CONCRETE, AS DIRECTED BY THE ENGINEER. THE SLOPE DRAIN SHALL CONSIST OF A NON-PERFORATED TEMPORARY DRAINAGE PIPE, 12 INCHES IN DIAMETER.

PLAN VIEW

TEMPORARY BERM AND SLOPE DRAIN DETAILS

(TO BE USED WHEN SHOULDER BERM CUTTER IS REQUIRED)

PROJECT NO. **R-2707C**
CLEVELAND COUNTY
 STATION: **596+50.98 -L-**
 SHEET 2 OF 2

DOCUMENT NOT CONSIDERED FINAL UNLESS ALL SIGNATURES COMPLETED

STATE OF NORTH CAROLINA
 DEPARTMENT OF TRANSPORTATION
 RALEIGH
BRIDGE APPROACH SLAB
 (SITE 6L)

REVISIONS				SHEET NO.	
NO.	BY:	DATE:	NO.	BY:	DATE:
1			3		
2			4		

TOTAL SHEETS: 56

12/13/2016 7:00:01 PM R:\407_ILL_R2707C_SML_BAS02_S7-56.dgn

DRAWN BY: **MBC** DATE: **10-16**
 CHECKED BY: **AJP** DATE: **10-16**
 DESIGN ENGINEER OF RECORD: **A. PETER** DATE: **10-16**