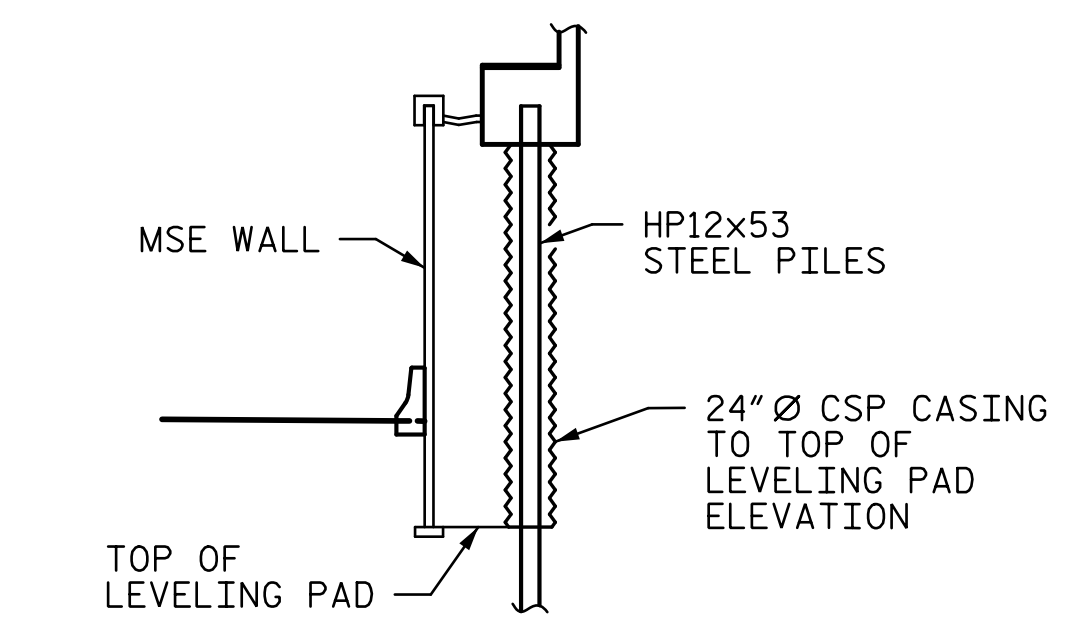


- NOTES:**
1. FOR NOTES, SEE SHEET 3 OF 3.
 2. FOR SECTIONS A-A AND B-B, SEE SHEET 3 OF 3.
 3. FOR DETAILS "B" AND "C", SEE SHEET 3 OF 3.
 4. CONTRACTOR SHALL VERIFY WING WALL LENGTH BASED ON MSE WALL DESIGN AND MODIFY THE WING WALL LENGTH ACCORDINGLY SUCH THAT THE WING WALL AND 1" EXPANSION JOINT MATERIAL IS FLUSH WITH THE BACK OF THE MSE WALL PANEL.

ELEVATION
(LOOKING IN THE DIRECTION OF STATIONING)



24" Ø CSP CASING DETAIL

DOCUMENT NOT CONSIDERED FINAL UNLESS ALL SIGNATURES COMPLETED

DocuSigned by:
Tony R. Laws, Jr.
12/13/2016

STV ENGINEERS, INC.
900 West Trade St., Suite 715
Charlotte, NC 28202
NC License Number: F-5991

PROJECT NO. **R-2707C**
CLEVELAND COUNTY
STATION: **596+50.98 -L-**
SHEET 1 OF 3

STATE OF NORTH CAROLINA		DEPARTMENT OF TRANSPORTATION		RALEIGH	
SUBSTRUCTURE					
END BENT 2					
(SITE 6L)					
REVISIONS					
NO.	BY:	DATE:	NO.	BY:	DATE:
1			3		
2			4		
SHEET NO.					SHEET NO.
7-51					56
TOTAL SHEETS					56

R:\407_I01_R2707C_SMU_EB201_S7-51.dgn 6:59:58 PM 12/13/2016