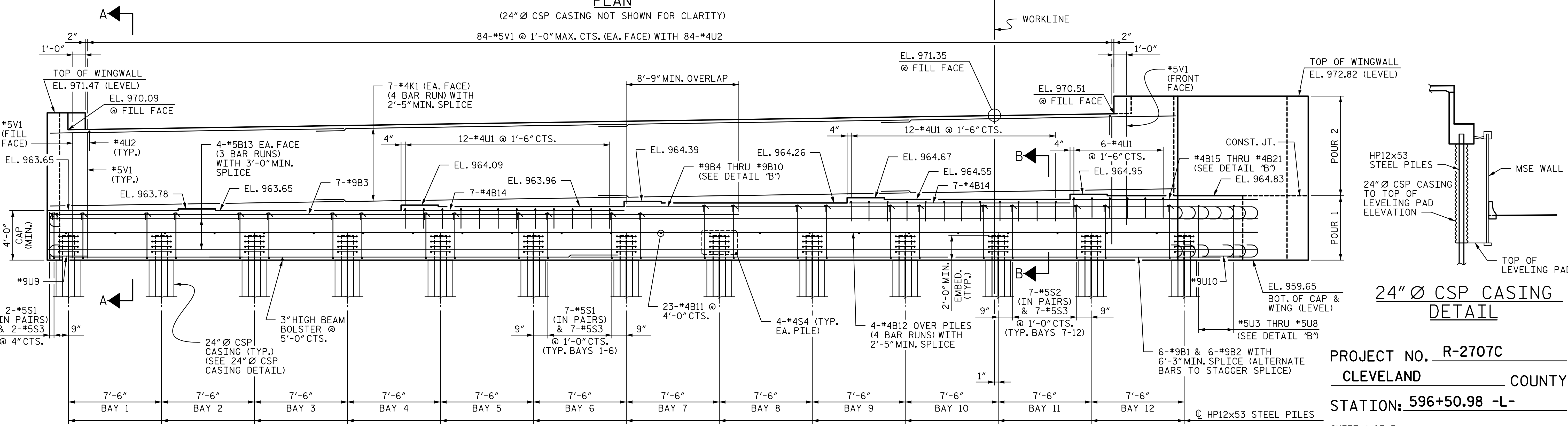


PLAN

(24" Ø CSP CASING NOT SHOWN FOR CLARITY)

84-#5V1 @ 1'-0" MAX. CTS. (EA. FACE) WITH 84-#4U2

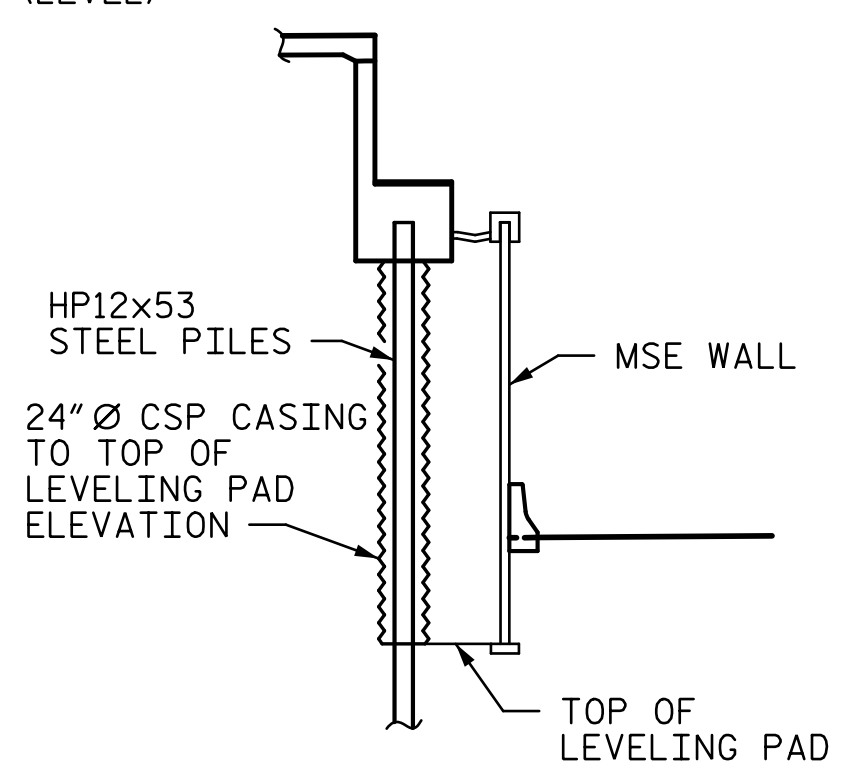


ELEVATION

(LOOKING IN THE DIRECTION OF STATIONING)

NOTES:

- FOR NOTES, SEE SHEET 3 OF 3.
- FOR SECTIONS A-A AND B-B, SEE SHEET 3 OF 3.
- FOR DETAILS "A" AND "B", SEE SHEET 3 OF 3.
- CONTRACTOR SHALL VERIFY WING WALL LENGTH BASED ON MSE WALL DESIGN AND MODIFY THE WING WALL LENGTH ACCORDINGLY SUCH THAT THE WING WALL AND 1" EXPANSION JOINT MATERIAL IS FLUSH WITH THE BACK OF THE MSE WALL PANEL.



24" Ø CSP CASING DETAIL

PROJECT NO. R-2707C
CLEVELAND COUNTY
 STATION: 596+50.98 -L-

SHEET 1 OF 3



DocuSigned by:
 Tony R. Laws, Jr.
 CA0CE9F8B74F7...
 12/13/2016

STV 100 years
 STV ENGINEERS, INC.
 900 West Trade St., Suite 715
 Charlotte, NC 28202
 NC License Number F-5991

STATE OF NORTH CAROLINA
 DEPARTMENT OF TRANSPORTATION
 RALEIGH
 SUBSTRUCTURE
 END BENT 1
 (SITE 6L)

REVISIONS				SHEET NO.	
NO.	BY:	DATE:	NO.	BY:	DATE:
1			3		
2			4		

TOTAL SHEETS: 56

12/13/2016 6:59:46 PM R:\407_077_R2707C_SMU_EB01_S7-39.dgn

DRAWN BY: MBC DATE: 10-16
 CHECKED BY: TJT DATE: 10-16
 DESIGN ENGINEER OF RECORD: V. WU DATE: 10-16