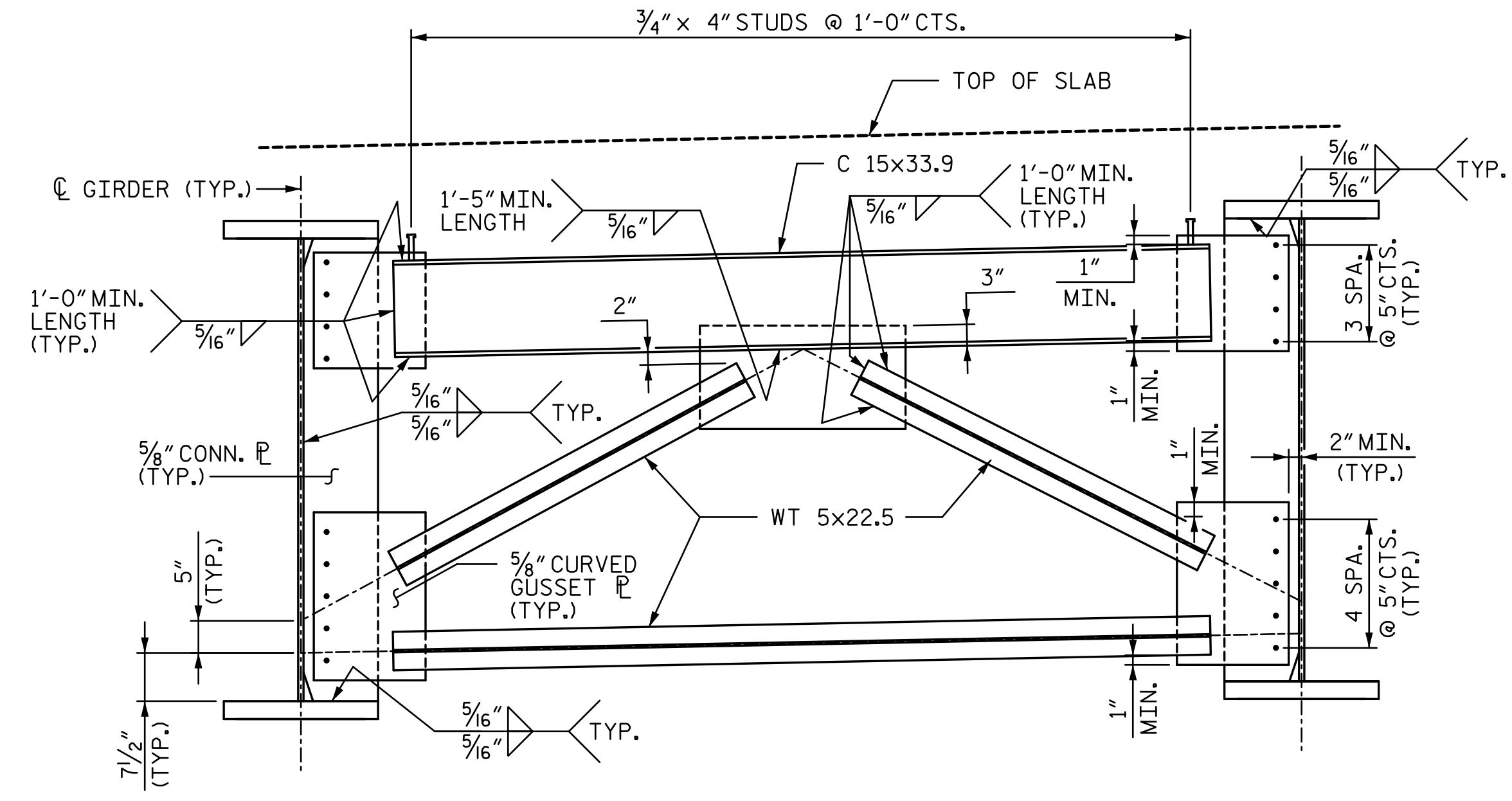


LEFT PLATE
(5/8" CONN. PL., BRG. STIFFENER OR
TRANSVERSE STIFFENER)
(SEE "INTERMEDIATE CROSSFRAME
DETAILS" TABLE AND "FRAMING PLAN"
FOR LOCATION) (TYP.)

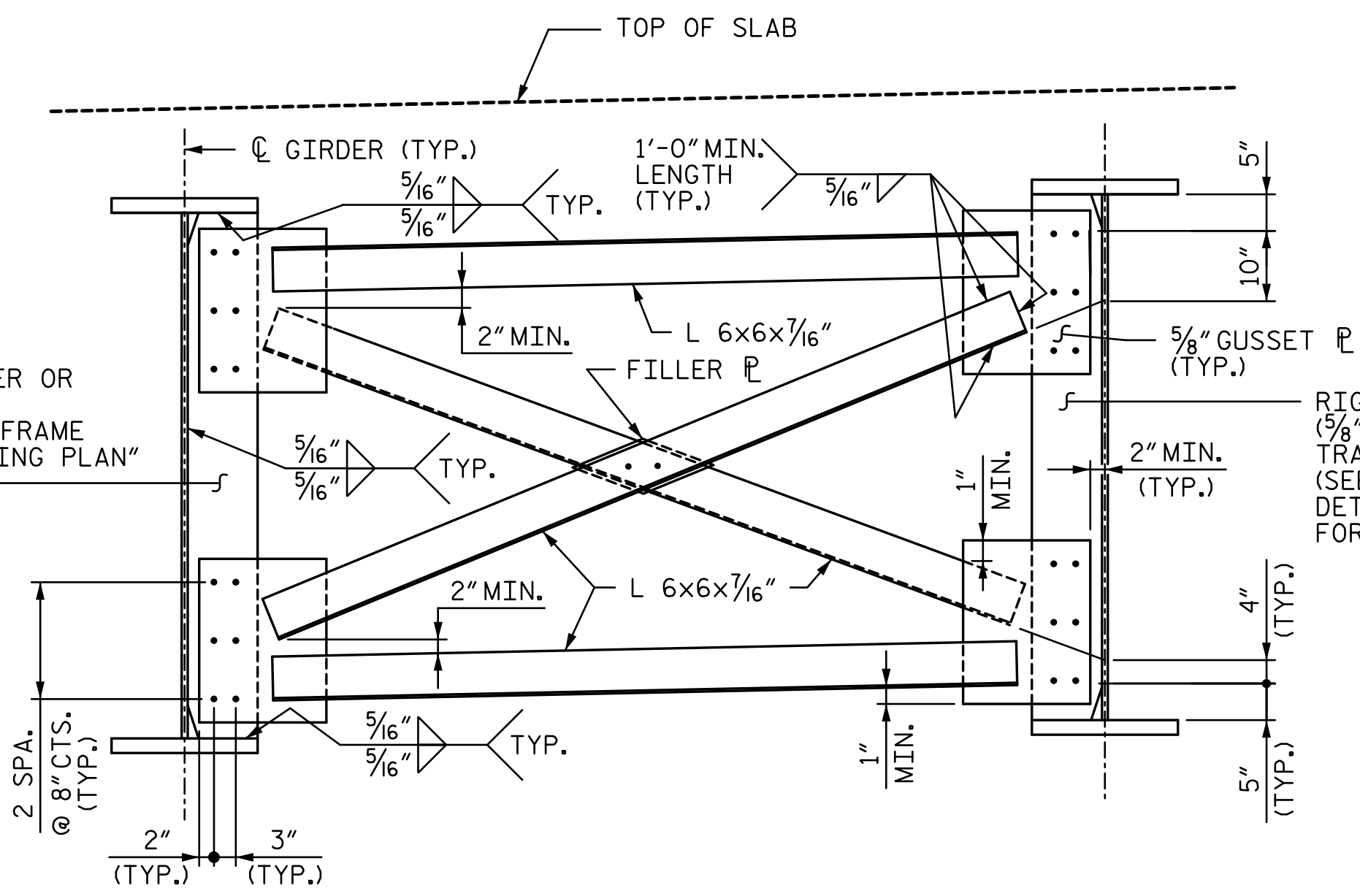
RIGHT PLATE
(5/8" CONN. PL., BRG. STIFFENER OR
TRANSVERSE STIFFENER)
(SEE "INTERMEDIATE CROSSFRAME
DETAILS" TABLE AND "FRAMING PLAN"
FOR LOCATION) (TYP.)

INTERMEDIATE CROSSFRAME
(CROSSFRAME CF2 SHOWN, OTHERS SIMILAR)



END CROSSFRAME (CF1)
(SEE "FRAMING PLAN" FOR LOCATIONS)

INTERMEDIATE CROSSFRAME DETAILS		
CROSSFRAME TYPE	LEFT PLATE	RIGHT PLATE
CF2	CONNECTOR PL	CONNECTOR PL
CF3	TRANSVERSE STIFFENER	TRANSVERSE STIFFENER
CF4	CONNECTOR PL	BRG. STIFFENER
CF5	BRG. STIFFENER	BRG. STIFFENER
CF6	TRANSVERSE STIFFENER	CONNECTOR PL



LEFT PLATE
(5/8" CONN. PL., BRG. STIFFENER OR
TRANSVERSE STIFFENER)
(SEE "INTERMEDIATE CROSSFRAME
DETAILS" TABLE AND "FRAMING PLAN"
FOR LOCATION) (TYP.)

RIGHT PLATE
(5/8" CONN. PL., BRG. STIFFENER OR
TRANSVERSE STIFFENER)
(SEE "INTERMEDIATE CROSSFRAME
DETAILS" TABLE AND "FRAMING PLAN"
FOR LOCATION) (TYP.)

OPTIONAL INTERMEDIATE CROSSFRAME

NOTE: AT THE CONTRACTORS OPTION, THE DIAPHRAGM WITH THE WELDED GUSSET PLATES MAY BE USED IN LIEU OF THE CROSSFRAME WITH BOLTED ANGLES AT NO ADDITIONAL COST TO THE DEPARTMENT.

PROJECT NO. R-2707C
CLEVELAND COUNTY
STATION: 596+50.98 -L-
SHEET 5 OF 11

DOCUMENT NOT CONSIDERED FINAL
UNLESS ALL SIGNATURES COMPLETED

DocuSigned by:
Tony R. Laws, Jr.
12/13/2016

STATE OF NORTH CAROLINA
DEPARTMENT OF TRANSPORTATION
RALEIGH

SUPERSTRUCTURE

**STRUCTURAL STEEL
CROSSFRAME DETAILS**

(SITE 6L)

REVISIONS				SHEET NO.
NO.	BY:	DATE:	NO.	DATE:
1			3	
2			4	

TOTAL SHEETS: 56

DRAWN BY: VMW DATE: 9-16 DESIGN ENGINEER OF RECORD: V. WU DATE: 10-16
CHECKED BY: TRL DATE: 10-16

12/13/2016 6:59:35 PM R:\407_035_R2707C_SMU_SSD05_S7-18.dgn