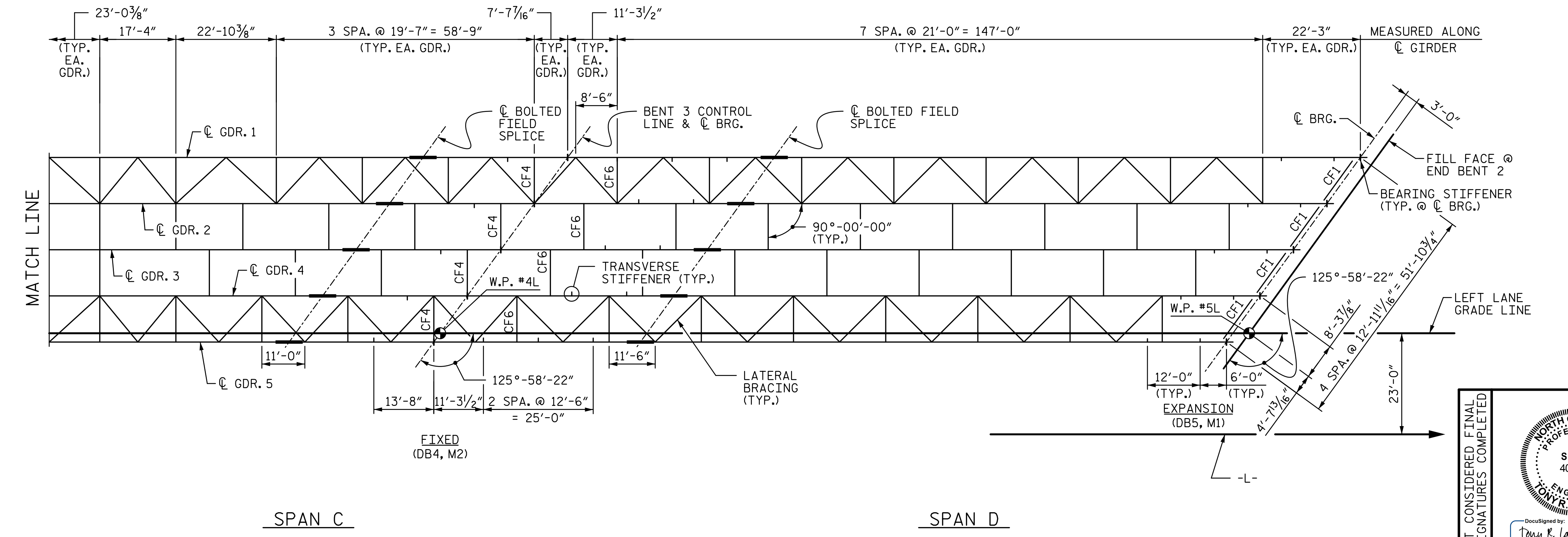


PARTIAL FRAMING PLAN

NOTE: ALL CROSSFRAMES ARE CF2 UNLESS OTHERWISE NOTED ON FRAMING PLAN. SEE SHEET "SUPERSTRUCTURE STRUCTURAL STEEL CROSSFRAME DETAILS" FOR CROSSFRAME DESIGNATIONS.



PARTIAL FRAMING PLAN

PROJECT NO. R-2707C  
CLEVELAND COUNTY  
STATION: 596+50.98 -L-

DOCUMENT NOT CONSIDERED FINAL UNLESS ALL SIGNATURES COMPLETED		STATE OF NORTH CAROLINA DEPARTMENT OF TRANSPORTATION RALEIGH				SHEET NO. S7-13 TOTAL SHEETS 56
		SUPERSTRUCTURE FRAMING PLAN				
		(SITE 6L)				
REVISIONS						
NO.	BY:	DATE:	NO.	BY:	DATE:	
1			3			
2			4			

DRAWN BY: VMW	DATE: 9-16	DESIGN ENGINEER OF RECORD: V. WU	DATE: 10-16
CHECKED BY: TRL	DATE: 10-16		

12/13/2016 6:59:32 PM R:\407\_025\_R2707C-SMU\_FP\_S7-13.dgn