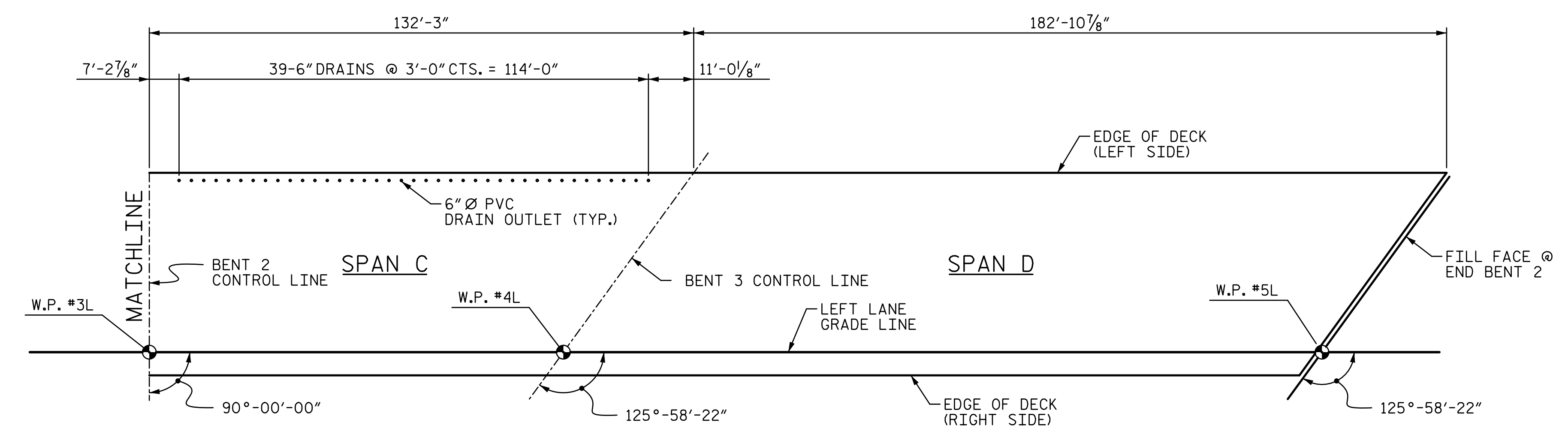
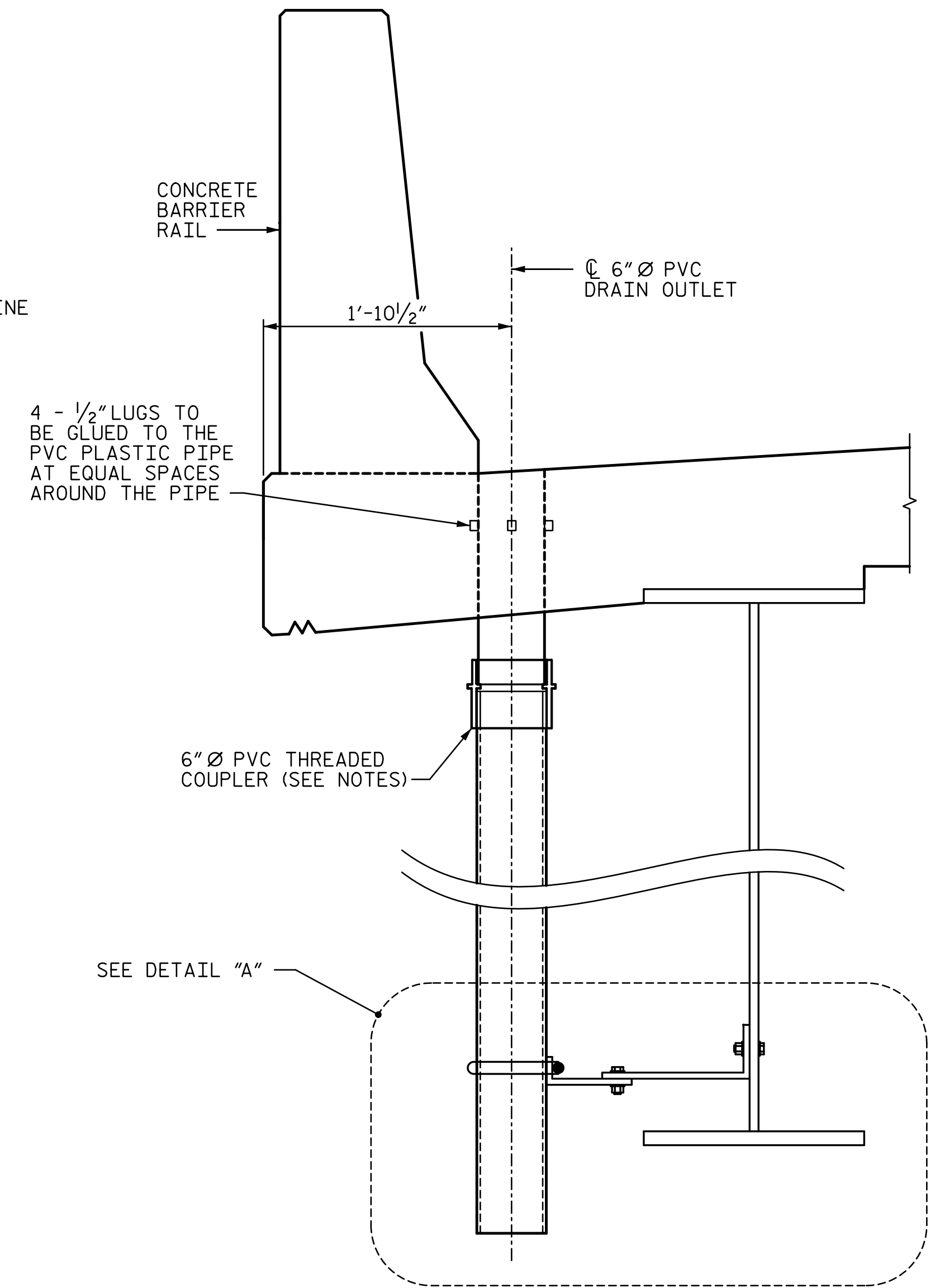


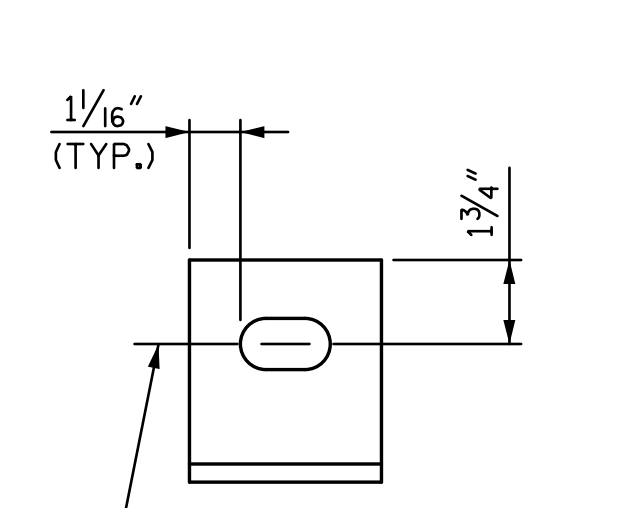
PLAN
(SPANS A & B)



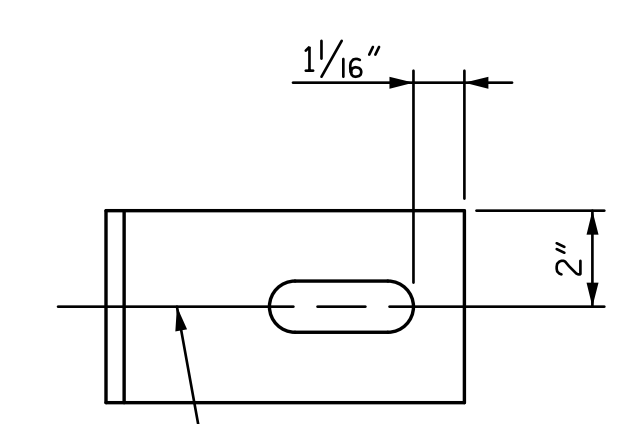
PLAN
(SPANS C & D)



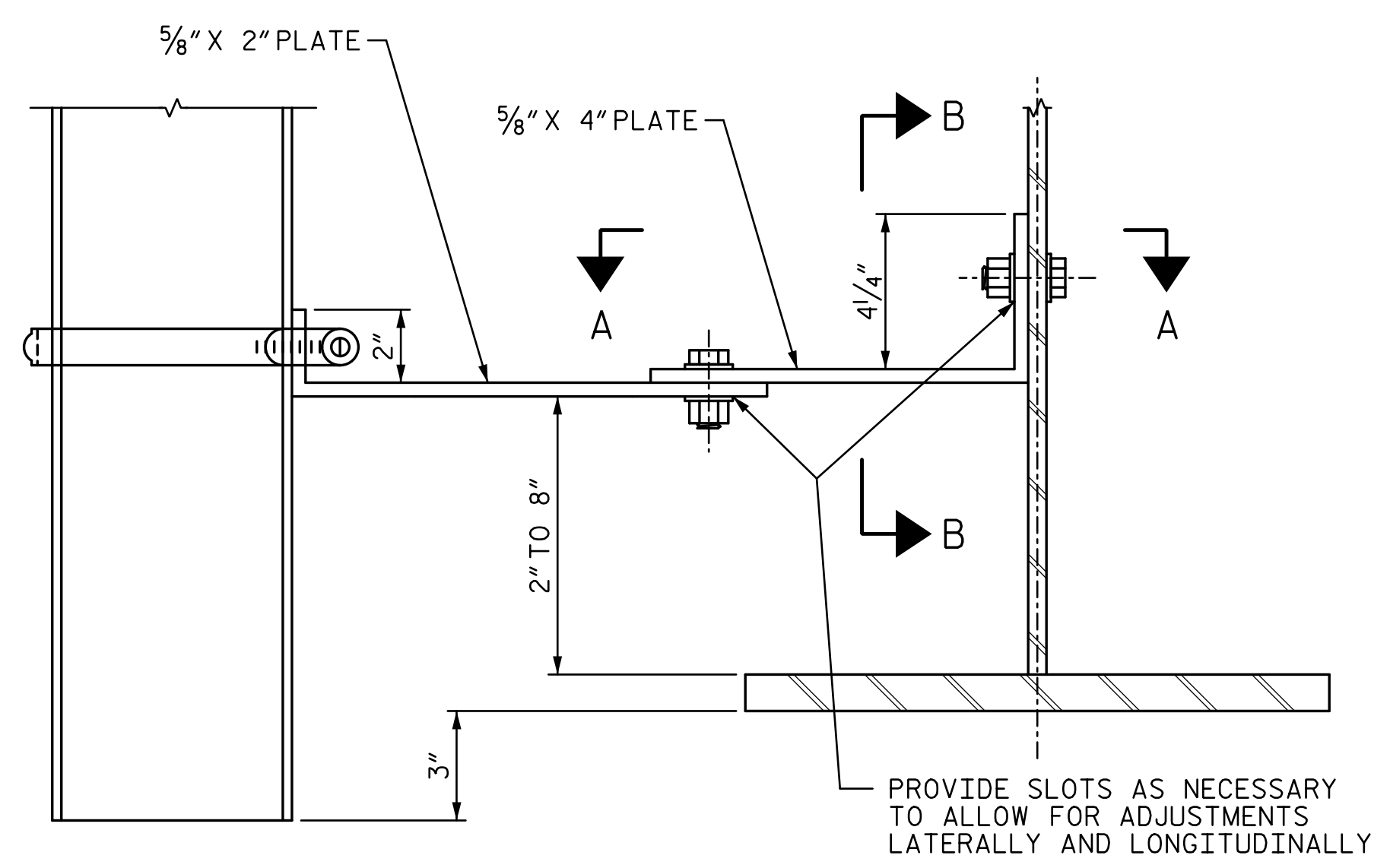
OVERHANG DRAINAGE DETAIL
(42 TOTAL)



SECTION B-B



SECTION A-A



DETAIL "A"

NOTES:

- TOP OF DECK DRAIN TO BE SET $\frac{3}{8}$ " BELOW SURFACE OF SLAB.
- 4 - $\frac{1}{2}$ " SQUARE LUGS TO BE GLUED TO THE PVC PLASTIC PIPE AT EQUAL SPACES AROUND THE PIPE DRAIN APPROXIMATELY 4" FROM THE TOP OF PIPE.
- THE 6" \varnothing PVC PLASTIC PIPE AND FITTINGS SHALL BE SCHEDULE 40 AND CONFORM TO ASTM D1785.
- BOLT SIZE TO BE SAME AS DIAPHRAGMS AND CROSS FRAME CONNECTIONS. STAINLESS STEEL WORM DRIVE HOSE CLAMP SHALL BE COMMERCIAL QUALITY.
- PLATES SHALL CONFORM TO AASHTO M270 GRADE 50 STEEL OR APPROVED EQUAL.
- COUPLING IN DRAIN PIPE WILL BE PERMITTED AS APPROVED BY THE ENGINEER.
- PVC DECK DRAINS SHALL BE PAINTED WITH TWO COATS OF BROWN PRIMER MEETING THE REQUIREMENTS OF ARTICLE 1080-11 OF THE STANDARD SPECIFICATIONS. EACH COAT SHALL BE 2 DRY MILS THICK. DECK DRAINS SHALL BE ROUGHENED PRIOR TO PAINTING. NO SEPARATE PAYMENT SHALL BE MADE FOR PAINTING PVC DECK DRAINS AS THIS IS CONSIDERED INCIDENTAL TO THE PAY ITEM FOR REINFORCED CONCRETE DECK SLAB.

PROJECT NO. R-2707C
CLEVELAND COUNTY
 STATION: 596+50.98 -L-

DOCUMENT NOT CONSIDERED FINAL UNLESS ALL SIGNATURES COMPLETED		STATE OF NORTH CAROLINA DEPARTMENT OF TRANSPORTATION RALEIGH				SHEET NO. S7-12 TOTAL SHEETS 56
		SUPERSTRUCTURE DECK DRAIN DETAILS				
		(SITE 6L)				
REVISIONS						
NO.	BY:	DATE:	NO.	BY:	DATE:	
1			3			
2			4			

12/13/2016 6:59:32 PM R:\407_023_R2707C-SMU.DDD_S7-12.dgn

DRAWN BY: ATH DATE: 10-16 DESIGN ENGINEER OF RECORD: T. LAWS DATE: 10-16
 CHECKED BY: TRL DATE: 10-16