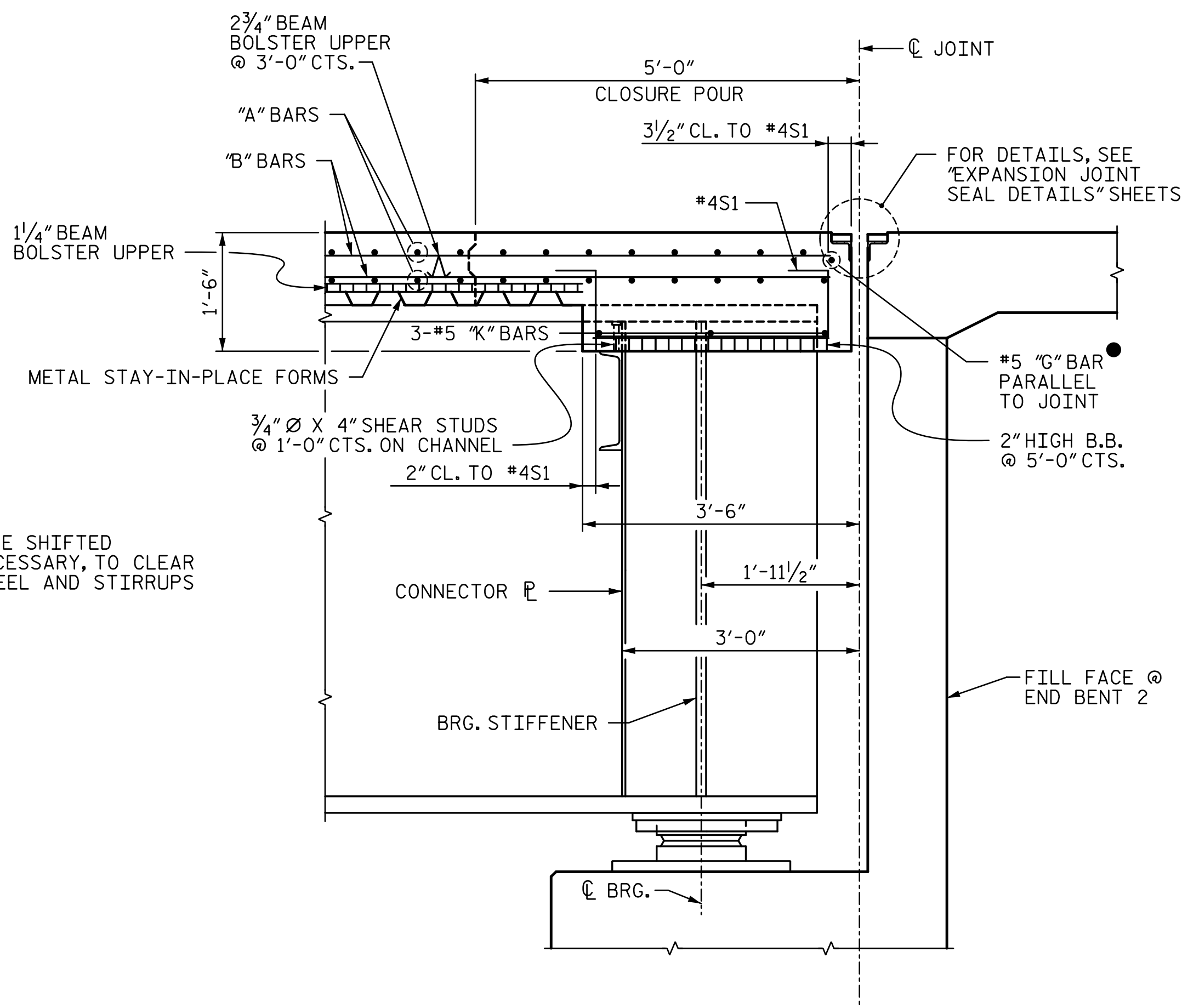
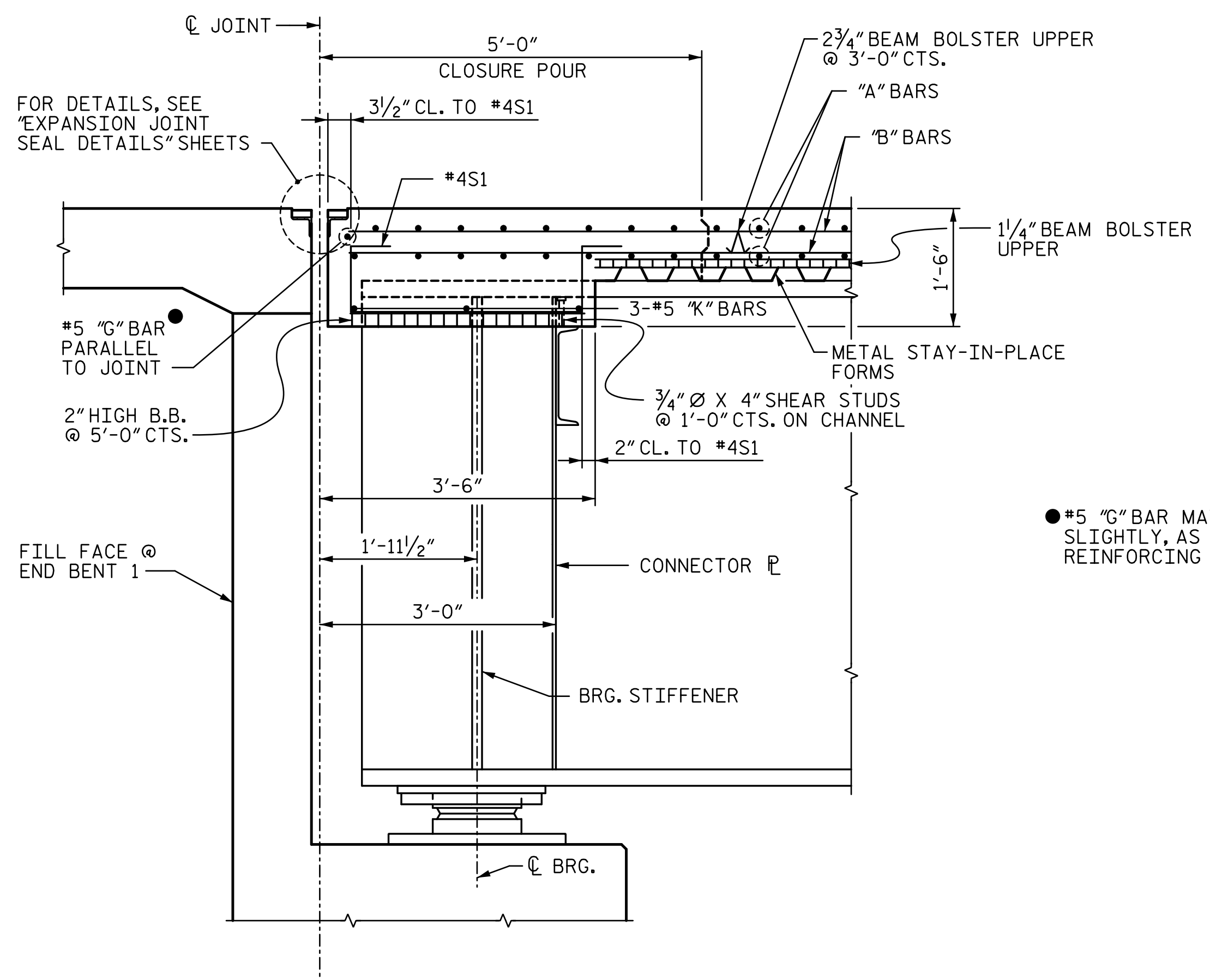


**NOTES:**  
 1. DIAPHRAGM DIMENSIONS ARE BASED ON 1" JOINT OPENING. CONTRACTOR SHALL ADJUST DIMENSIONS BASED ON THE "MOVEMENT AND SETTING AT JOINT" TABLE ON "EXPANSION JOINT SEAL DETAILS" SHEET 1 OF 2.



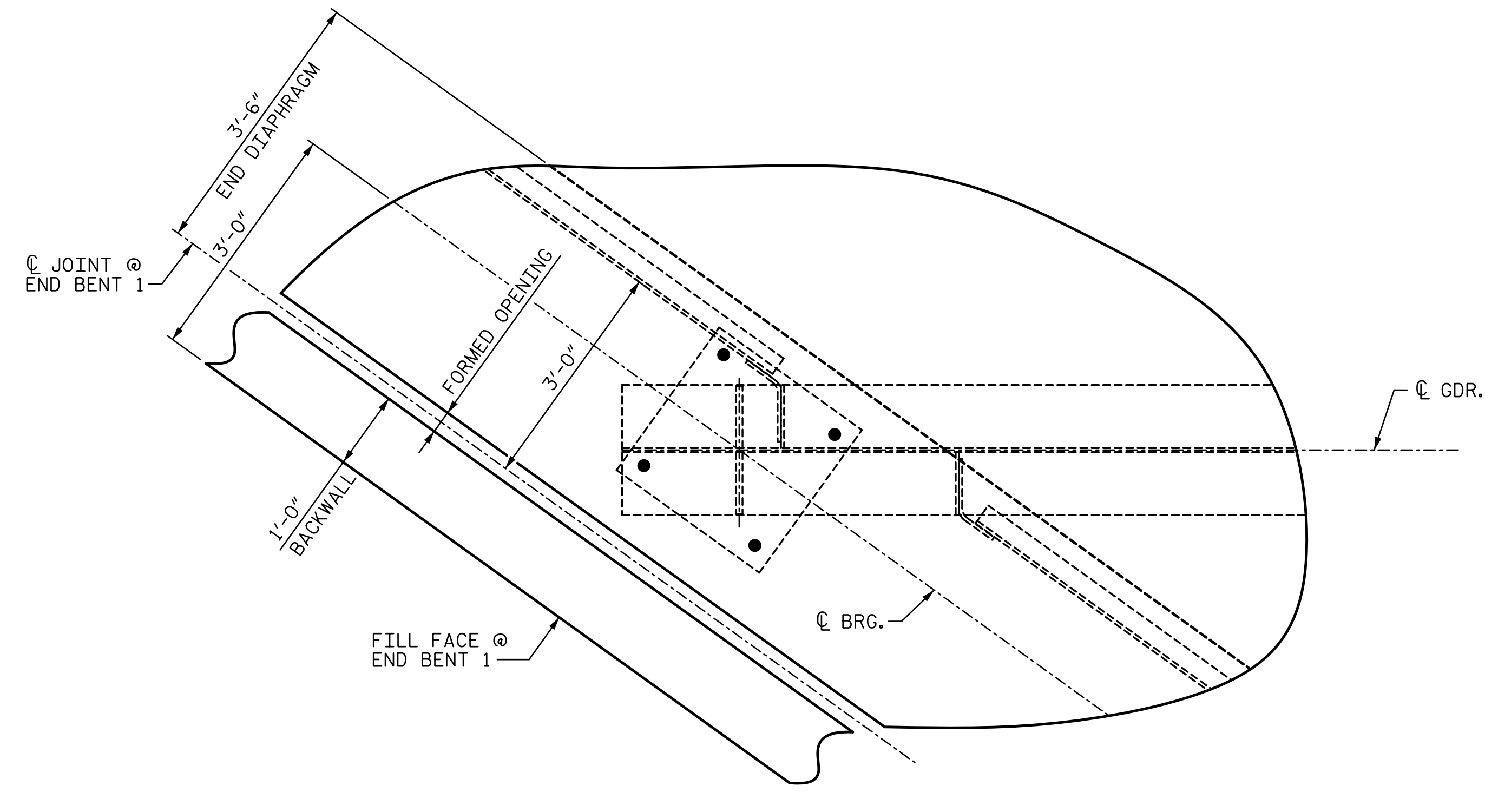
● #5 "G" BAR MAY BE SHIFTED SLIGHTLY, AS NECESSARY, TO CLEAR REINFORCING STEEL AND STIRRUPS

**SECTION A-A**

END DIAPHRAGMS AT END BENT 1  
 ("J" BAR USED WITH STANDARD EXP. JT. NOT SHOWN)

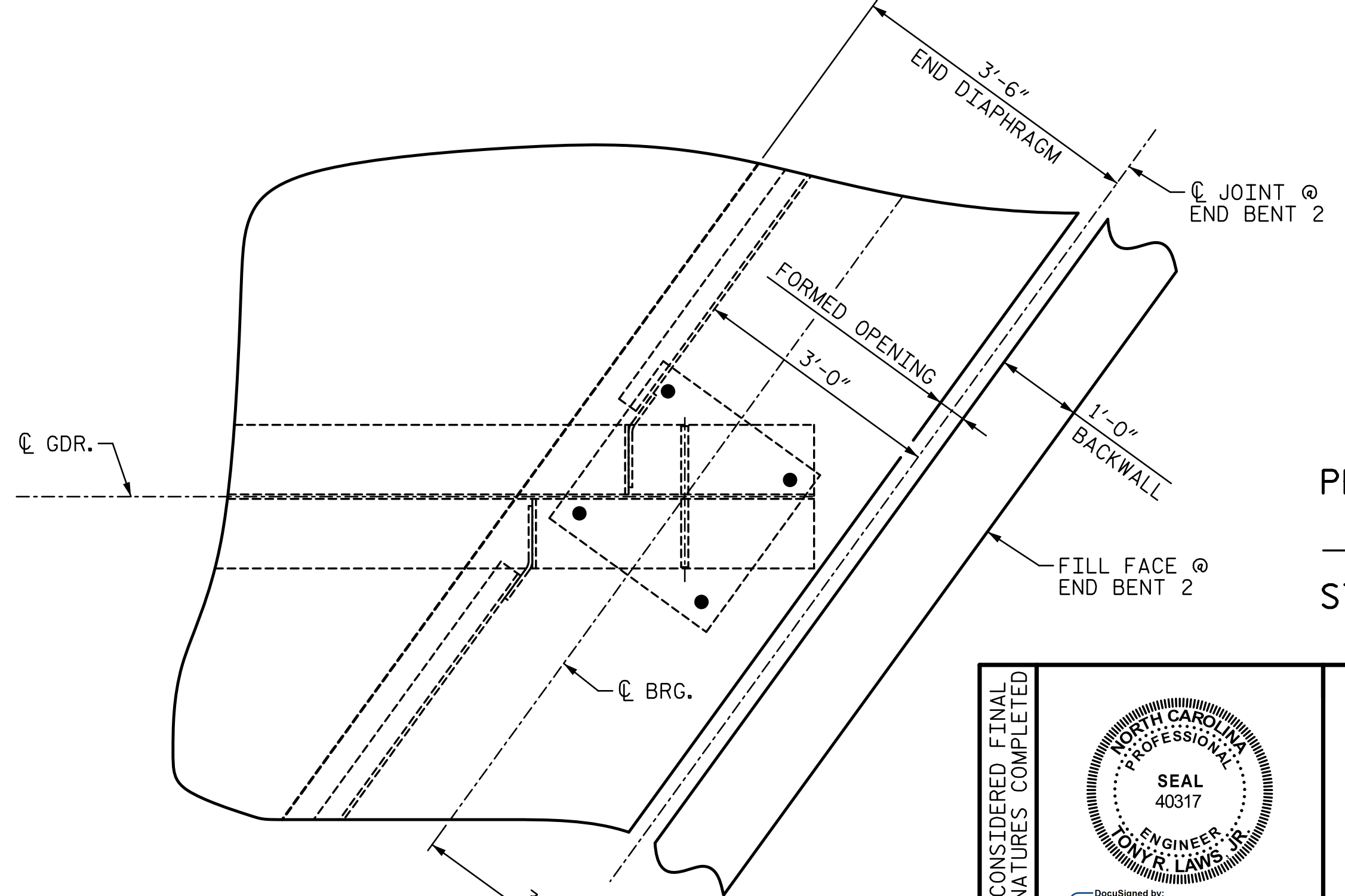
**SECTION B-B**

END DIAPHRAGMS AT END BENT 2  
 ("J" BAR USED WITH STANDARD EXP. JT. NOT SHOWN)



**PLAN**

(BENT CAP NOT SHOWN FOR CLARITY)



**PLAN**

(BENT CAP NOT SHOWN FOR CLARITY)

PROJECT NO. R-2707C  
CLEVELAND COUNTY  
 STATION: 596+50.98 -L-

DOCUMENT NOT CONSIDERED FINAL UNLESS ALL SIGNATURES COMPLETED	<p>DocuSigned by:                  Tony R. Laws, Jr.                  CA0CE9F8B74F7...                  12/13/2016</p>	STATE OF NORTH CAROLINA DEPARTMENT OF TRANSPORTATION RALEIGH				SHEET NO. S7-8 TOTAL SHEETS 56
		SUPERSTRUCTURE SUPERSTRUCTURE DETAILS				
		(SITE 6L)				
REVISIONS						
NO.	BY:	DATE:	NO.	BY:	DATE:	
1			3			
2			4			

12/13/2016 6:59:30 PM R:\407\_015\_R2707C\_SML\_SD\_S7-8.dgn

DRAWN BY: VMW DATE: 10-16 DESIGN ENGINEER OF RECORD: V. WU DATE: 10-16  
 CHECKED BY: AJP DATE: 10-16