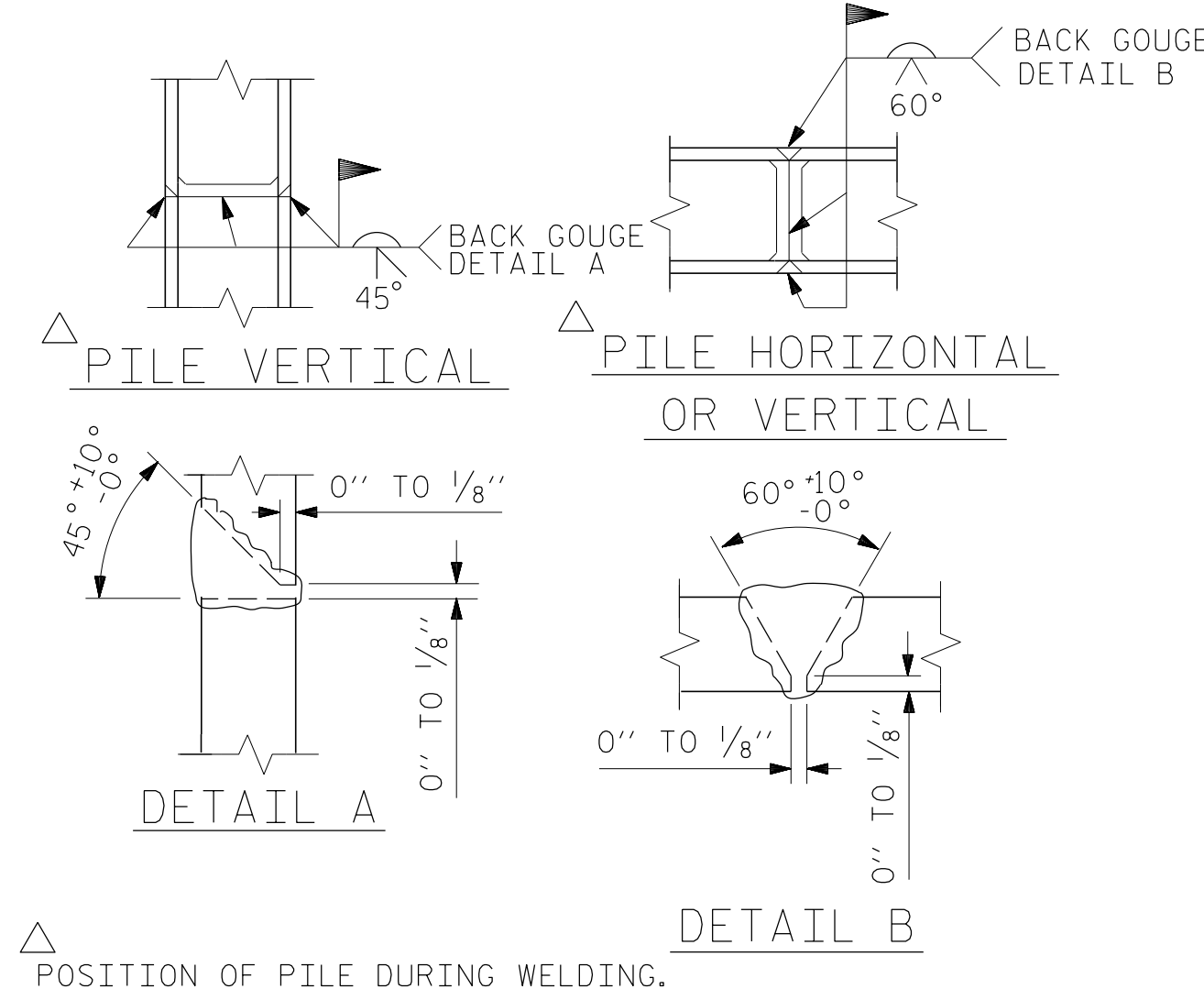


BAGGED STONE AND PIPE SHALL BE PLACED IMMEDIATELY AFTER COMPLETION OF END BENT EXCAVATION. PIPE MAY BE EITHER CONCRETE, CORRUGATED STEEL, CORRUGATED ALUMINUM ALLOY, OR CORRUGATED PLASTIC. PERFORATED PIPE WILL NOT BE ALLOWED.

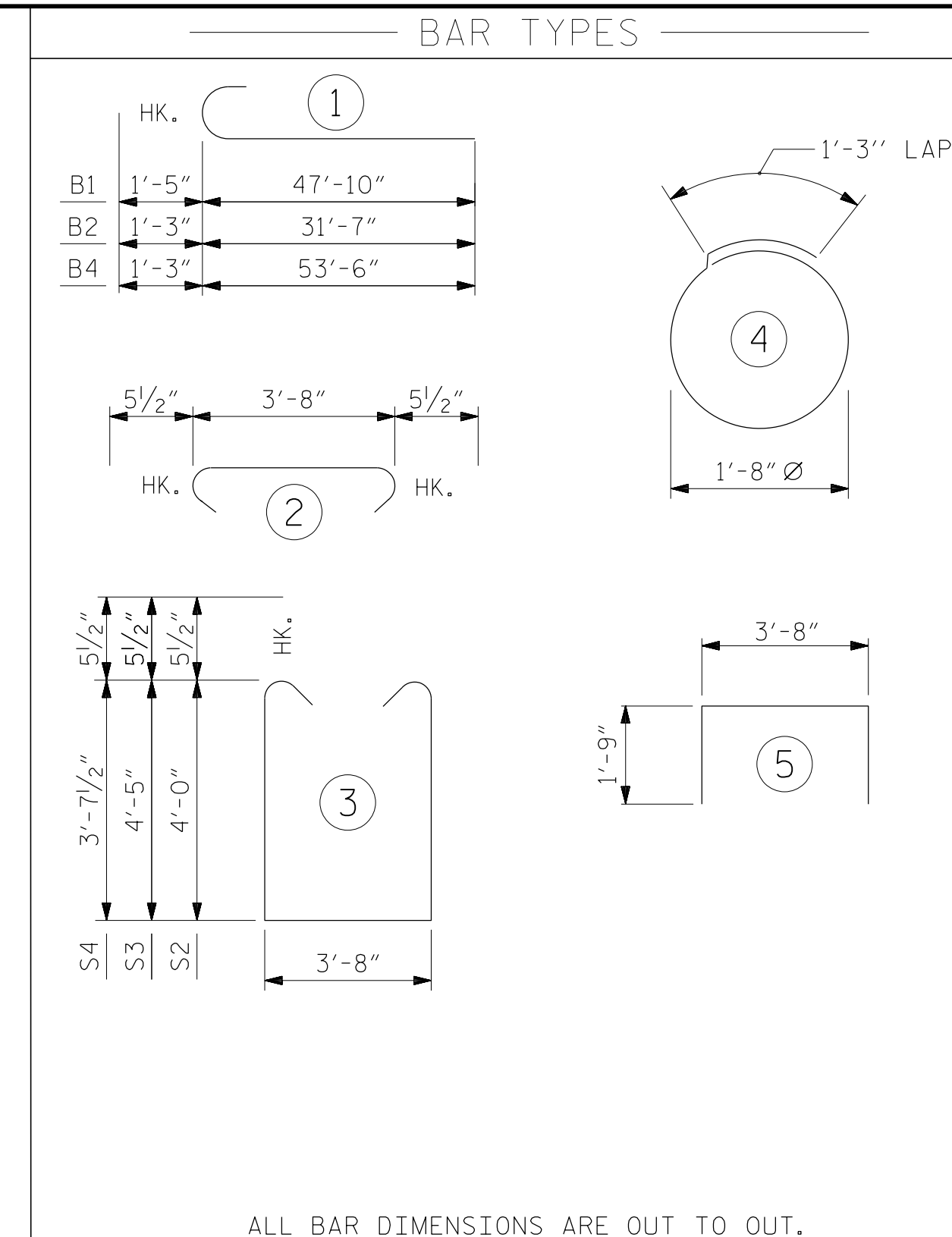
BAGGED STONE SHALL REMAIN IN PLACE UNTIL THE ENGINEER DIRECTS THAT IT BE REMOVED. THE CONTRACTOR SHALL REMOVE AND DISPOSE OF SILT ACCUMULATIONS AT BAGGED STONE WHEN SO DIRECTED BY THE ENGINEER. BAGS SHALL BE REMOVED AND REPLACED WHENEVER THE ENGINEER DETERMINES THAT THEY HAVE DETERIORATED AND LOST THEIR EFFECTIVENESS.

NO SEPARATE PAYMENT WILL BE MADE FOR THIS WORK AND THE ENTIRE COST OF THIS WORK SHALL BE INCLUDED IN THE UNIT CONTRACT PRICE BID FOR THE SEVERAL PAY ITEMS.

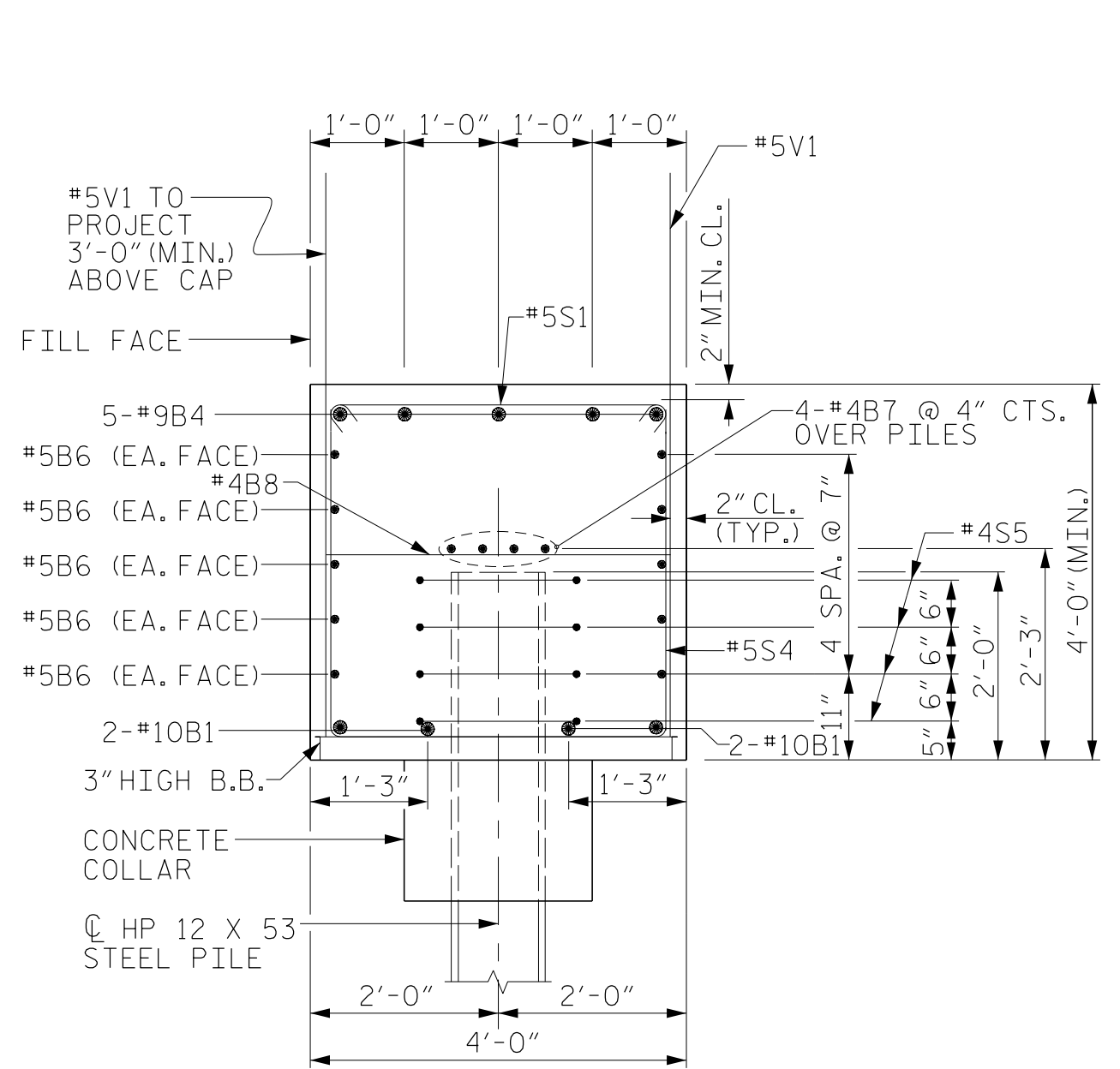
**TEMPORARY DRAINAGE AT END BENT**



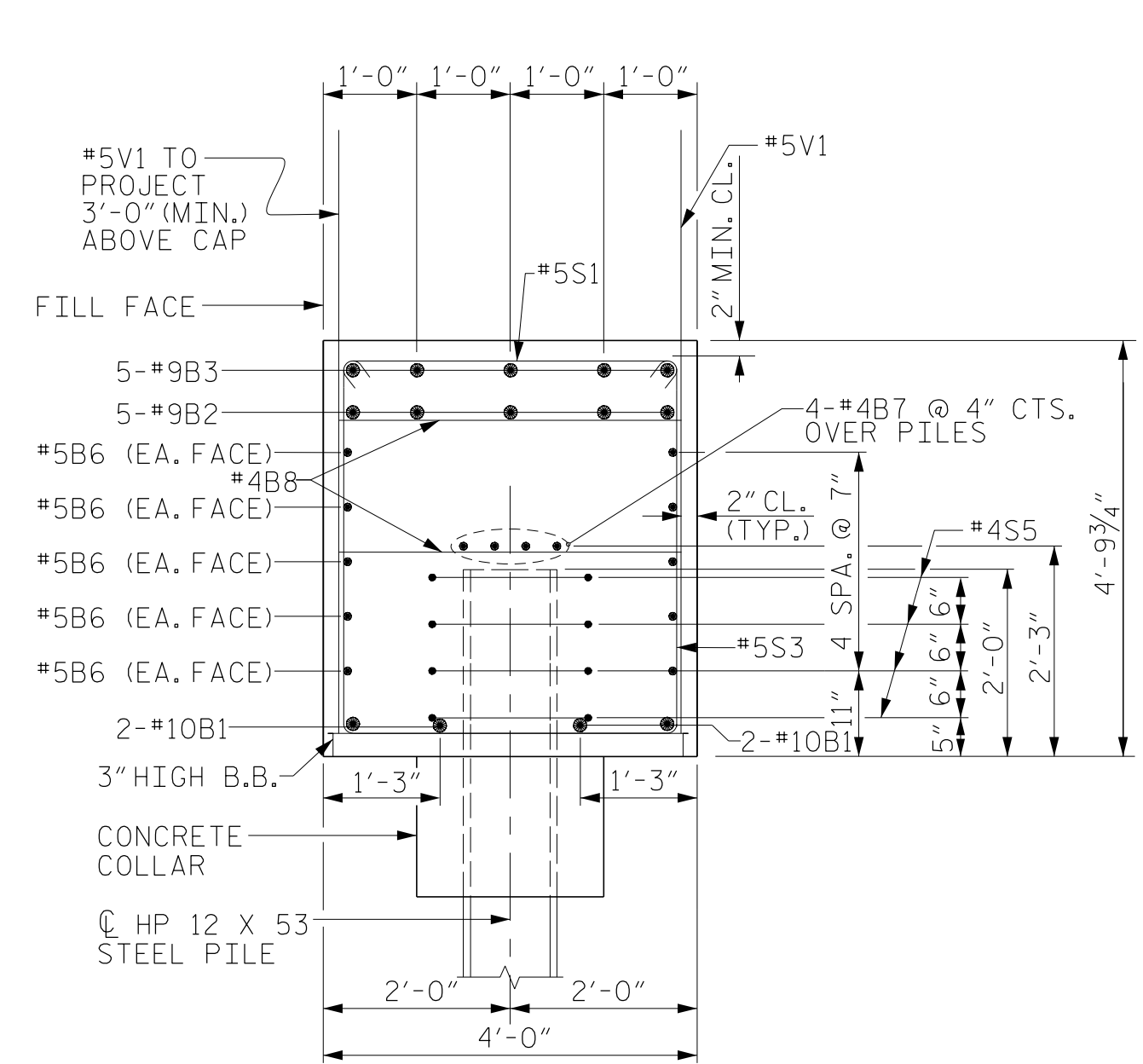
**PILE SPLICE DETAILS**



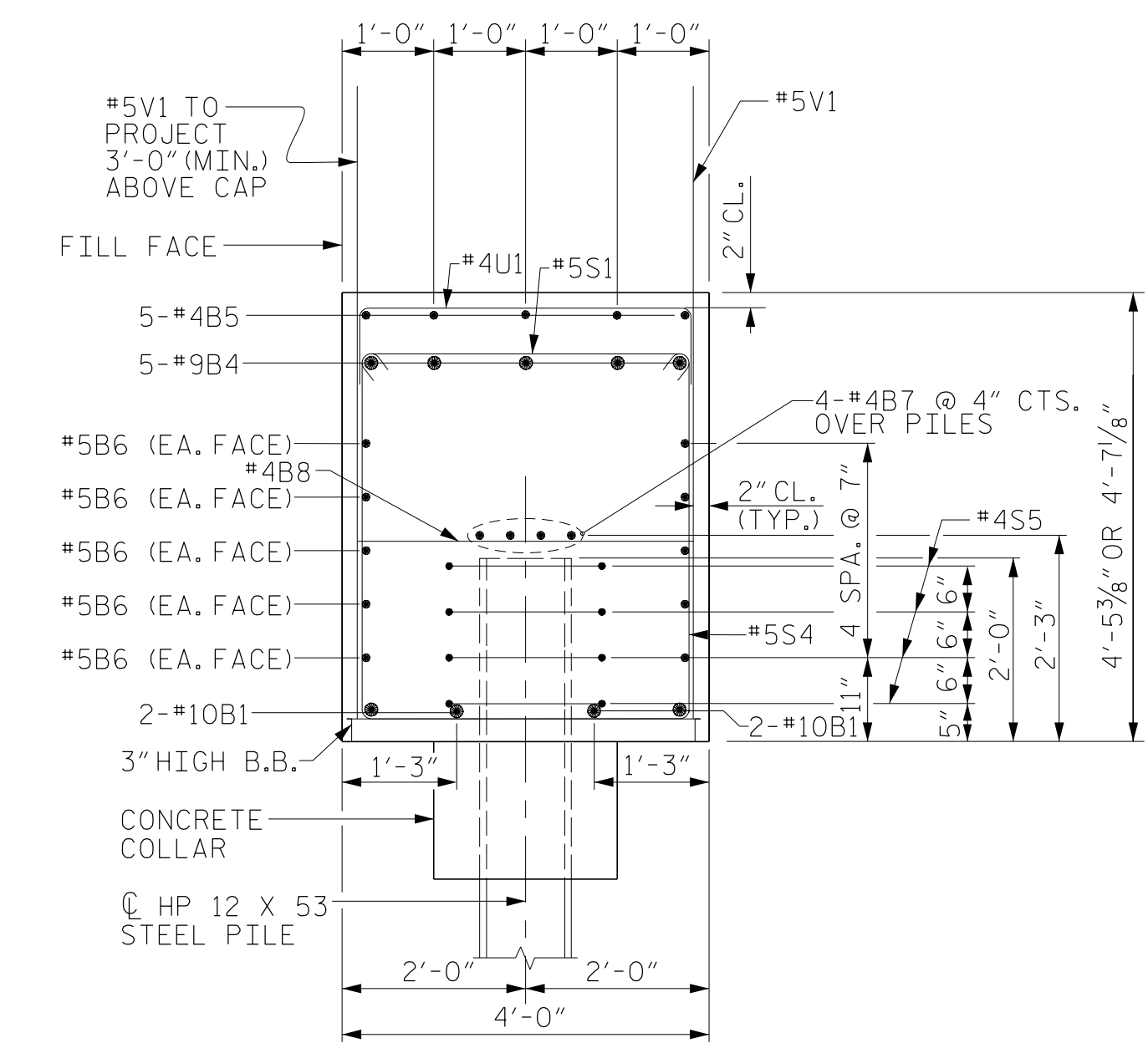
BILL OF MATERIAL FOR END BENT No. 2					
BAR	NO.	SIZE	TYPE	LENGTH	WEIGHT
B1	8	#10	1	49'-3"	1695
B2	5	#9	1	32'-10"	558
B3	5	#9	STR	21'-0"	357
B4	5	#9	1	54'-9"	931
B5	5	#4	STR	21'-3"	71
B6	20	#5	STR	45'-5"	947
B7	16	#4	STR	23'-9"	254
B8	28	#4	STR	3'-8"	69
H3	18	#6	STR	18'-8"	505
H4	16	#6	STR	18'-7"	447
S1	112	#5	2	4'-7"	535
S2	28	#5	3	12'-7"	367
S3	27	#5	3	13'-5"	378
S4	57	#5	3	11'-10"	704
S5	40	#4	4	6'-6"	174
U1	15	#4	5	7'-2"	72
V1	207	#5	STR	7'-8"	1655
REINFORCING STEEL FOR END BENT No. 2					9734 LBS.
CLASS A CONCRETE BREAKDOWN CAP, LOWER PART OF WINGS & COLLARS					65.2 C.Y.
HP 12 X 53 STEEL PILES					LN. FT. = 840



SECTION Z-Z



SECTION Y-Y



SECTION X-X

PROJECT NO. R-2707C  
 CLEVELAND COUNTY  
 STATION: 24+07.99 -Y9- POT  
 SHEET 3 OF 3



DocuSigned by:  
 Jeff Loftus  
 FES1DC2E9794A0 2/2/2017

Firm License No. C-1051  
 421 Fayetteville St,  
 Suite 400  
 Raleigh, NC 27601  
 T 919.380.8750  
 www.stewartinc.com

STATE OF NORTH CAROLINA DEPARTMENT OF TRANSPORTATION RALEIGH					
SUBSTRUCTURE INTEGRAL END BENT No. 2 DETAILS					
REVISIONS					SHEET NO.
NO.	BY:	DATE:	NO.	BY:	DATE:
1			3		
2			4		
					TOTAL SHEETS 37

STR. #6

DRAWN BY: J. LOFTUS	DATE: 09-16
CHECKED BY: H. ASSFOURA	DATE: 11-16
DESIGN ENGINEER OF RECORD: J. LOFTUS	DATE: 09-16

R 2707C-6  
 2/2/2017  
 \\406\_065\_r2707c-smu-2EB3\_s6-33.dgn  
 USER:deFault