

NOTES

FOR BEARING DETAILS, SEE ELASTOMERIC BEARING DETAILS SHEET.

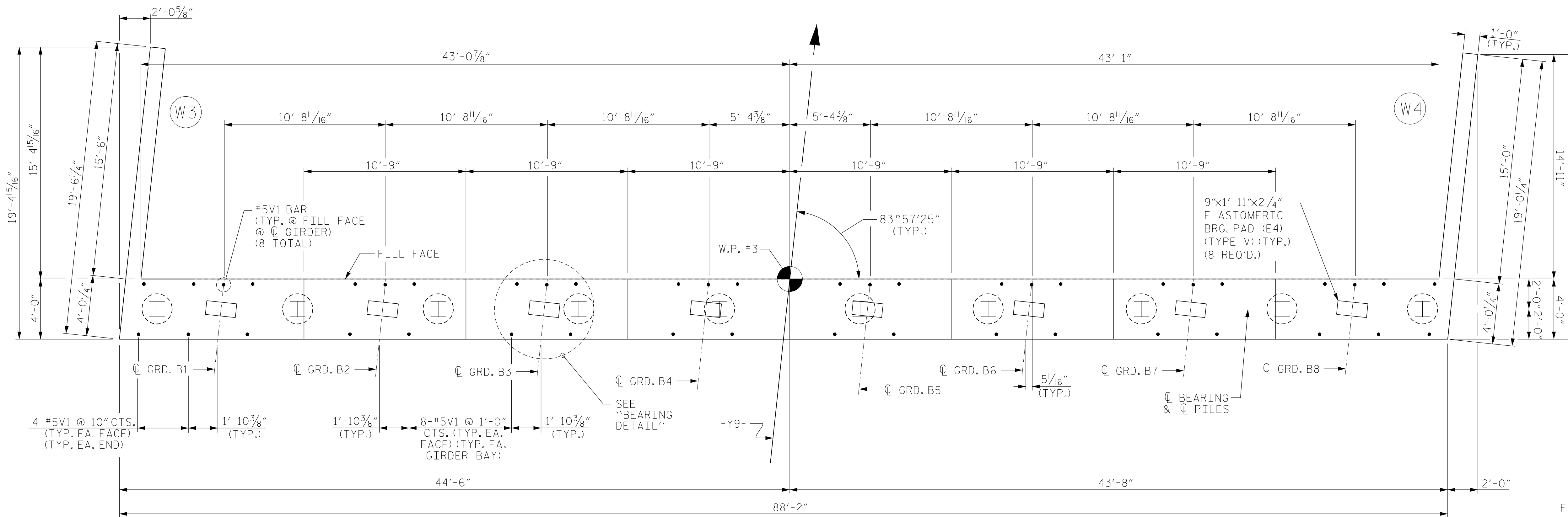
FOR PILE SPLICE DETAILS, SEE SHEET 3 OF 3.

THE UPPER PORTION OF THE WINGS SHALL BE POURED WITH THE SUPERSTRUCTURE. CONCRETE AND REINFORCING STEEL QUANTITIES ARE INCLUDED IN THE SUPERSTRUCTURE BILL OF MATERIAL. FOR DETAILS, SEE SUPERSTRUCTURE PLANS.

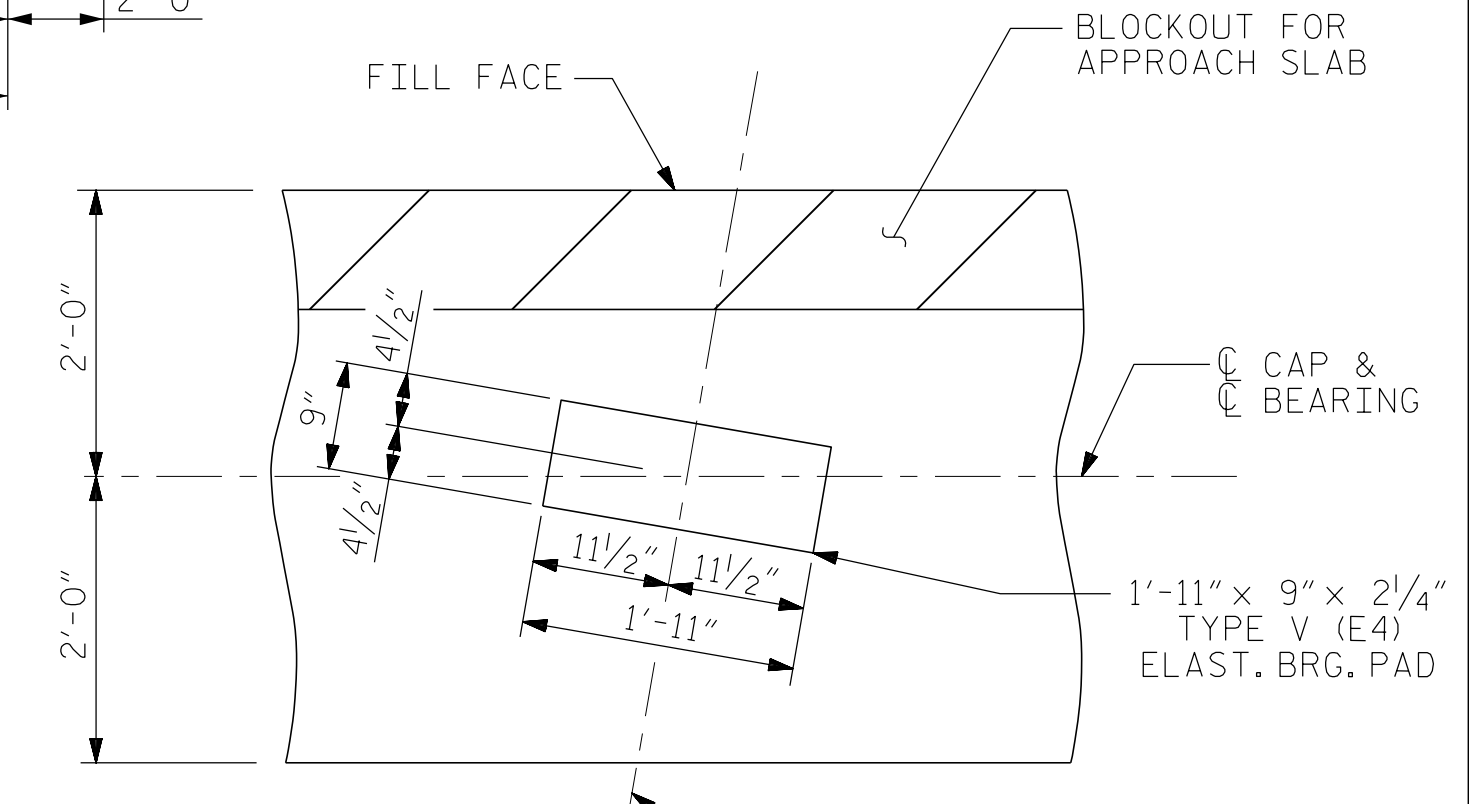
INSTALL THE 4" DIA. DRAIN PIPE THROUGH THE WING WALL AS REQUIRED FOR REINFORCED BRIDGE APPROACH FILLS, SEE THE ROADWAY PLANS. REINFORCING STEEL IN THE WING WALL MAY BE SHIFTED AS NECESSARY TO CLEAR THE DRAIN PIPE.

THE TOP SURFACE OF THE END BENT CAP AND WINGS, EXCEPT THE BEARING AREA, SHALL BE RAKED TO A DEPTH OF 1/4".

FOR CONCRETE COLLAR DETAIL, SEE INTEGRAL END BENT NO. 1, SHEET 2 OF 3.

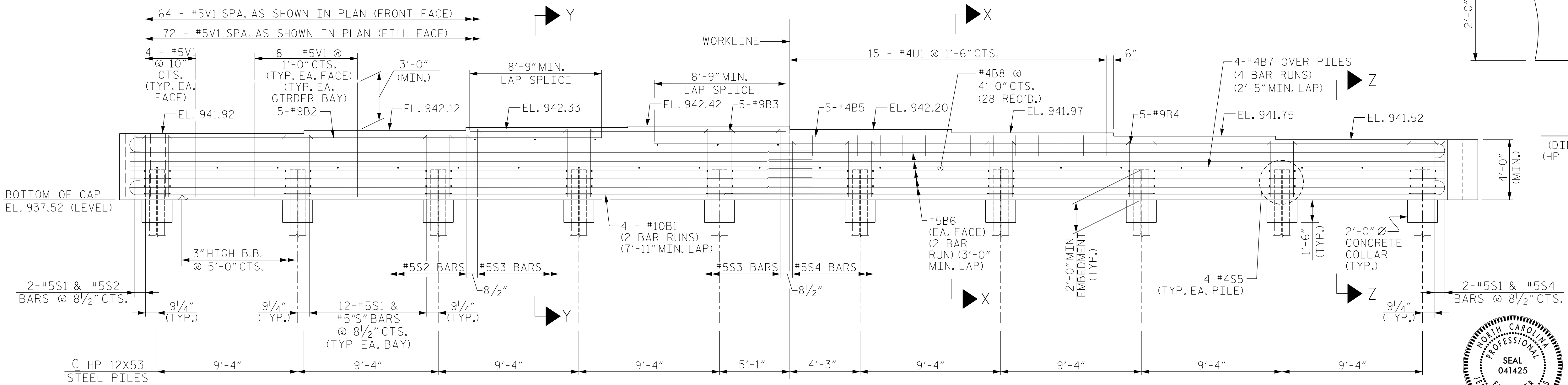


PLAN



BEARING DETAIL

(DIMENSIONS ARE TYPICAL EACH GIRDER)
(HP 12X53 PILES NOT SHOWN FOR CLARITY)



ELEVATION

PROJECT NO. R-2707C
CLEVELAND COUNTY
STATION: 24+07.99 -Y9- POT

SHEET 1 OF 3



DocuSigned by:
Jeff Loftus 2/6/2017

Firm License No. C-1051
421 Fayetteville St,
Suite 400
Raleigh, NC 27601
T 919.380.8750
www.stewartinc.com

STATE OF NORTH CAROLINA DEPARTMENT OF TRANSPORTATION RALEIGH					
SUBSTRUCTURE INTEGRAL END BENT No. 2					
SHEET NO. S6-31					
TOTAL SHEETS 37					
REVISIONS					
NO.	BY:	DATE:	NO.	BY:	DATE:
1			3		
2			4		

STR. #6

DRAWN BY: J. LOFTUS DATE: 09-16
CHECKED BY: H. ASSFOURA DATE: 11-16
DESIGN ENGINEER OF RECORD: J. LOFTUS DATE: 09-16

R 2707C-6
 2/6/2017
 \\406-061-R2707C-SMU-2EB1-S6-31.dgn
 USER:jeffloftus