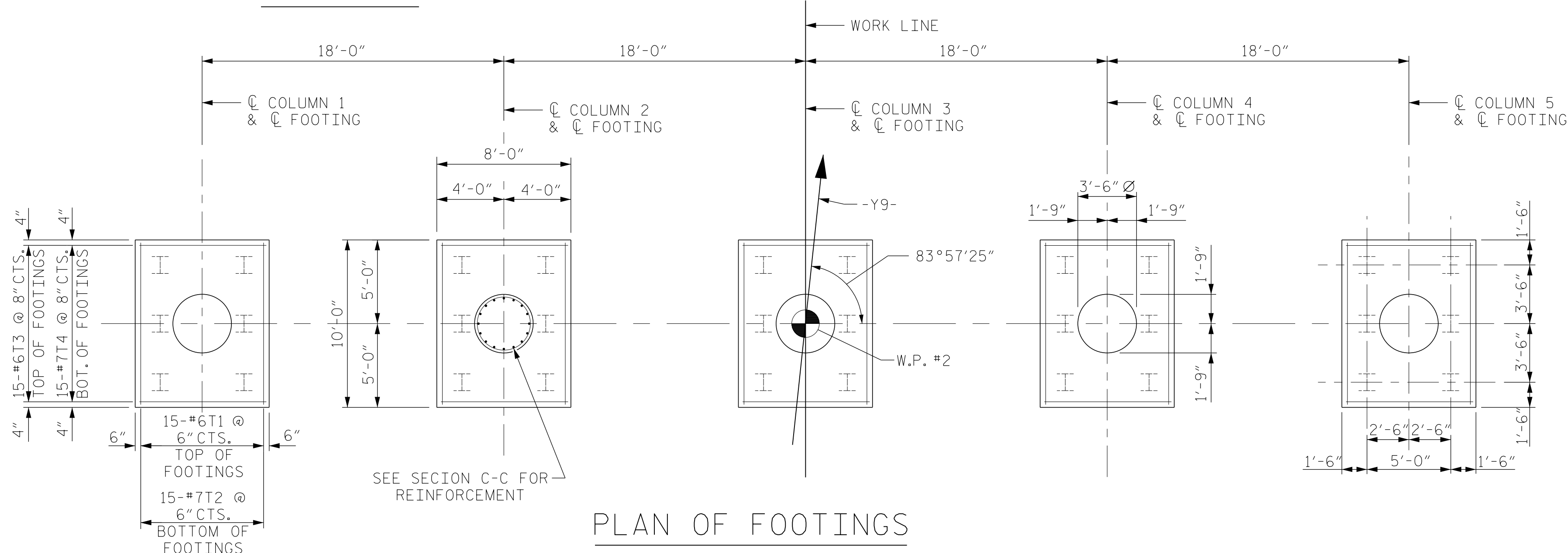
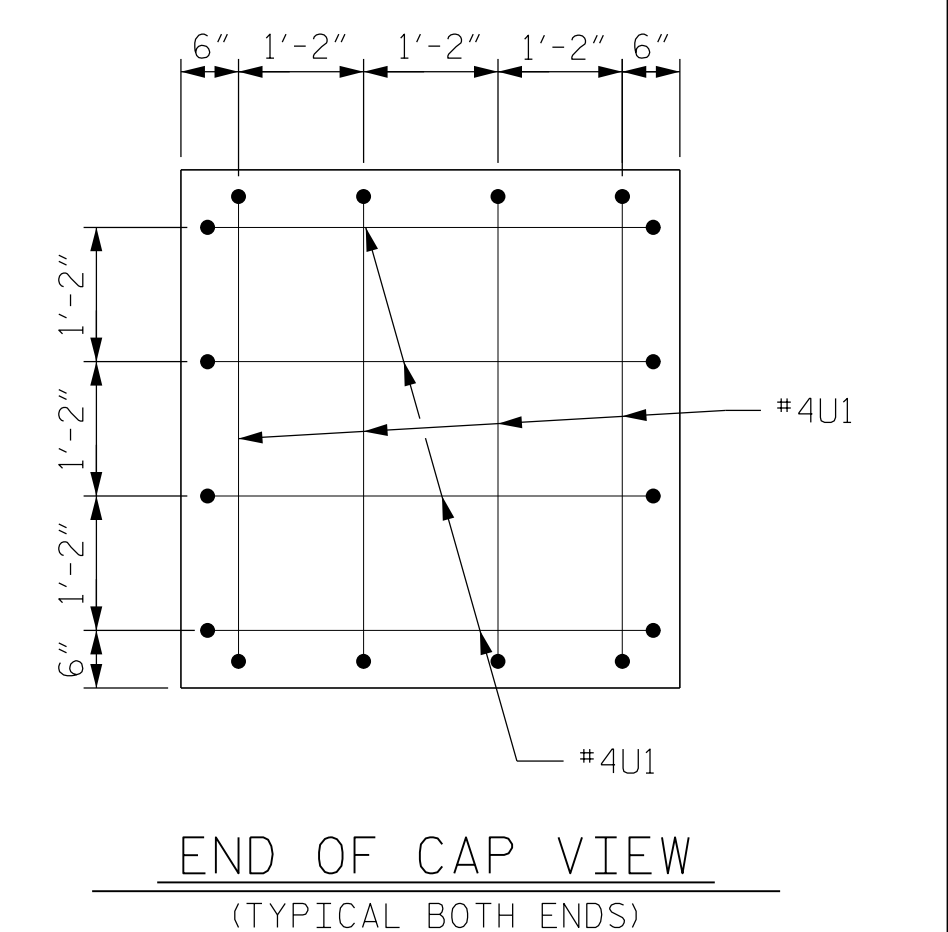
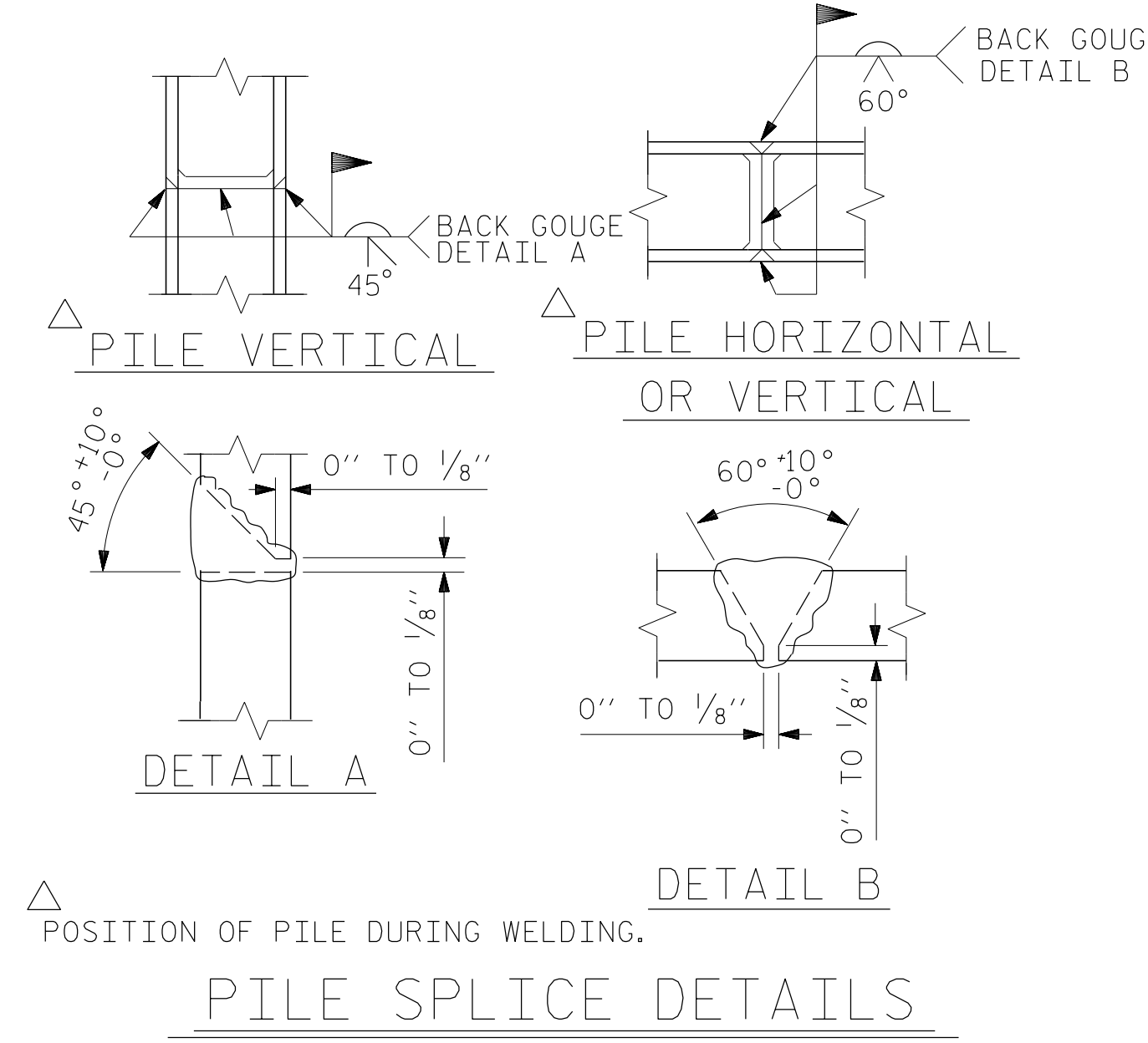


| BILL OF MATERIAL FOR BENT NO. 1 |     |      |      |         |        |
|---------------------------------|-----|------|------|---------|--------|
| BAR                             | NO. | SIZE | TYPE | LENGTH  | WEIGHT |
| B1                              | 14  | #11  | 1    | 47'-3"  | 3515   |
| B2                              | 14  | #9   | 1    | 46'-5"  | 2209   |
| B3                              | 20  | #5   | STR  | 42'-4"  | 883    |
| B4                              | 7   | #4   | STR  | 21'-3"  | 99     |
| B5                              | 7   | #4   | STR  | 24'-3"  | 113    |
| S1                              | 144 | #5   | 2    | 12'-9"  | 1915   |
| S2                              | 144 | #5   | 2    | 12'-2"  | 1827   |
| S3                              | 113 | #4   | 3    | 7'-8"   | 579    |
| U1                              | 16  | #4   | 3    | 7'-0"   | 75     |
| T1                              | 75  | #6   | 5    | 10'-10" | 1220   |
| T2                              | 75  | #7   | 5    | 11'-2"  | 1712   |
| T3                              | 75  | #6   | 5    | 8'-10"  | 995    |
| T4                              | 75  | #7   | 5    | 9'-2"   | 1405   |
| V1                              | 80  | #9   | 1    | 22'-9"  | 6188   |
| M1                              | 80  | #9   | 1    | 8'-0"   | 2176   |
| SP-1                            | 5   | **   | 4    | 819'-5" | 2737   |

\* THE SP-1 SPIRAL REINFORCING STEEL SHALL BE W20 OR D-20 COLD DRAWN WIRE OR #4PLAIN OR DEFORMED BAR

|                                 |         |               |
|---------------------------------|---------|---------------|
| REINFORCING STEEL               | 24,911  | LBS.          |
| SPIRAL COLUMN REINFORCING STEEL | 2,737   | LBS.          |
| CLASS A CONCRETE                |         |               |
| POUR #1 (PILE FOOTING)          | 44.4    | C.Y.          |
| POUR #2 (COLUMNS)               | 35.4    | C.Y.          |
| POUR #3 (CAP)                   | 68.1    | C.Y.          |
| TOTAL CLASS A CONCRETE          | 147.9   | C.Y.          |
| FOUNDATION EXCAVATION           |         | LUMP SUM      |
| HP12X53 STEEL PILES             | No.: 30 | 1650 LIN. FT. |



2/2/2017  
 \406\_059-R2707C-SMU-BENT2-S6-30.dgn  
 USER:deFault

DRAWN BY: J. LOFTUS DATE: 09-16  
 CHECKED BY: H. ASSFOURA DATE: 11-16  
 DESIGN ENGINEER OF RECORD: J. LOFTUS DATE: 09-16

DocuSigned by:  
 Jeff Loftus  
 FES1D02E79480 2/2/2017

Firm License No. C-1051  
 421 Fayetteville St,  
 Suite 400  
 Raleigh, NC 27601  
 T 919.380.8750  
 www.stewartinc.com

**STEWART**

PROJECT NO. R-2707C  
 CLEVELAND COUNTY  
 STATION: 24+07.99 -Y9- POT

SHEET 2 OF 2

STATE OF NORTH CAROLINA  
 DEPARTMENT OF TRANSPORTATION  
 RALEIGH

SUBSTRUCTURE  
 BENT No. 1

| REVISIONS |     |       |     |     |       |
|-----------|-----|-------|-----|-----|-------|
| NO.       | BY: | DATE: | NO. | BY: | DATE: |
| 1         |     |       | 3   |     |       |
| 2         |     |       | 4   |     |       |

SHEET NO. S6-30  
 TOTAL SHEETS 37

STR. #6