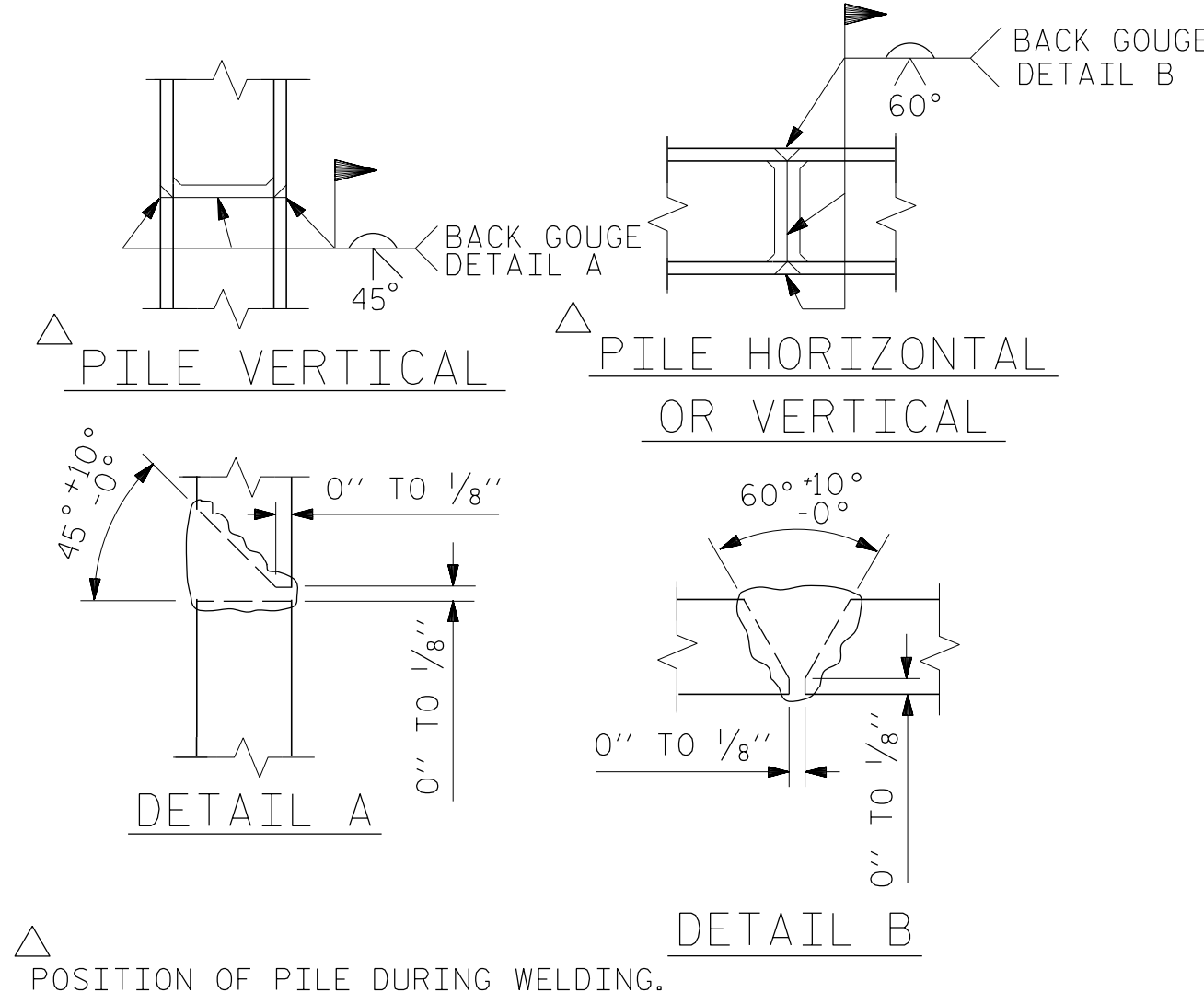


BAGGED STONE AND PIPE SHALL BE PLACED IMMEDIATELY AFTER COMPLETION OF END BENT EXCAVATION. PIPE MAY BE EITHER CONCRETE, CORRUGATED STEEL, CORRUGATED ALUMINUM ALLOY, OR CORRUGATED PLASTIC. PERFORATED PIPE WILL NOT BE ALLOWED.

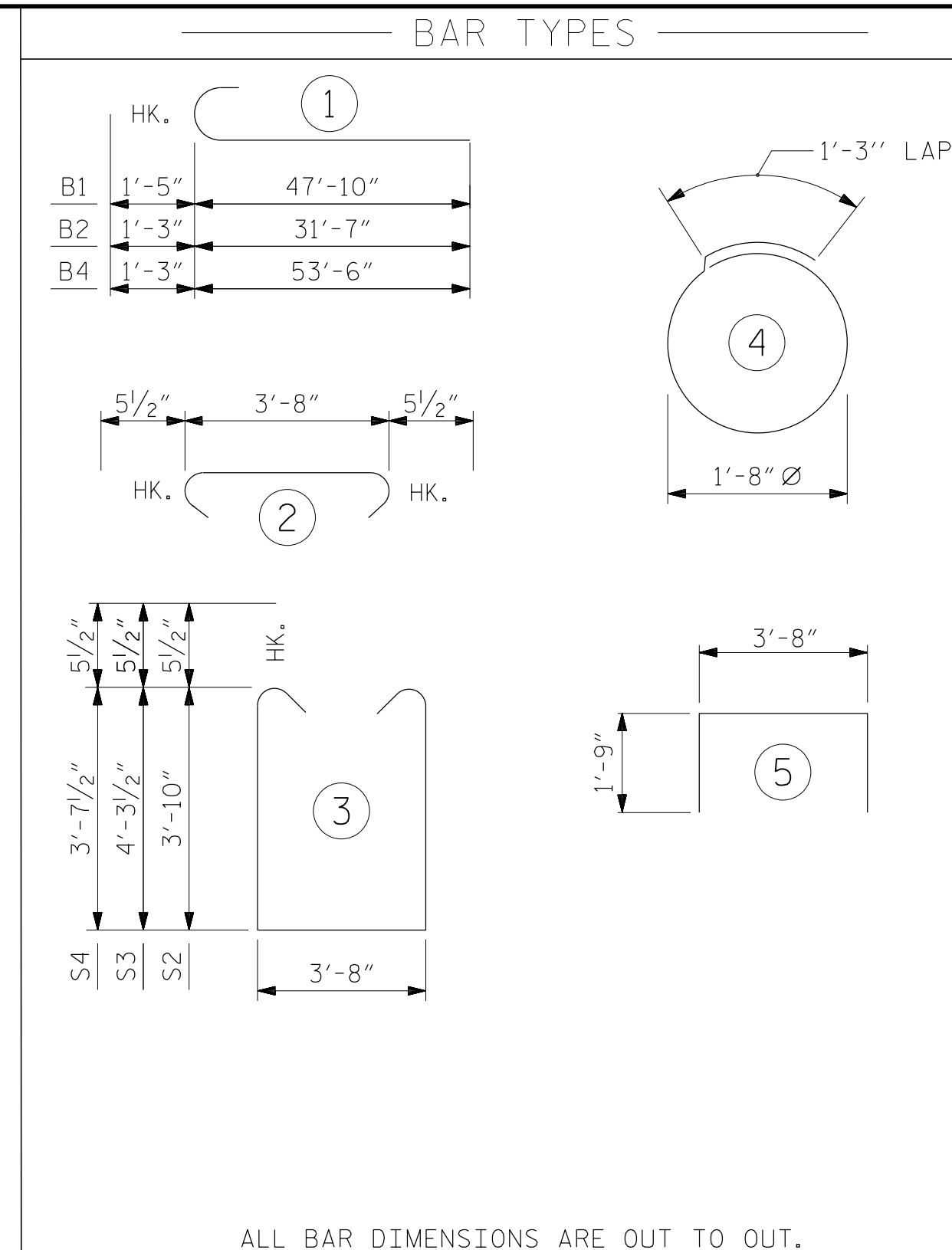
BAGGED STONE SHALL REMAIN IN PLACE UNTIL THE ENGINEER DIRECTS THAT IT BE REMOVED. THE CONTRACTOR SHALL REMOVE AND DISPOSE OF SILT ACCUMULATIONS AT BAGGED STONE WHEN SO DIRECTED BY THE ENGINEER. BAGS SHALL BE REMOVED AND REPLACED WHENEVER THE ENGINEER DETERMINES THAT THEY HAVE DETERIORATED AND LOST THEIR EFFECTIVENESS.

NO SEPARATE PAYMENT WILL BE MADE FOR THIS WORK AND THE ENTIRE COST OF THIS WORK SHALL BE INCLUDED IN THE UNIT CONTRACT PRICE BID FOR THE SEVERAL PAY ITEMS.

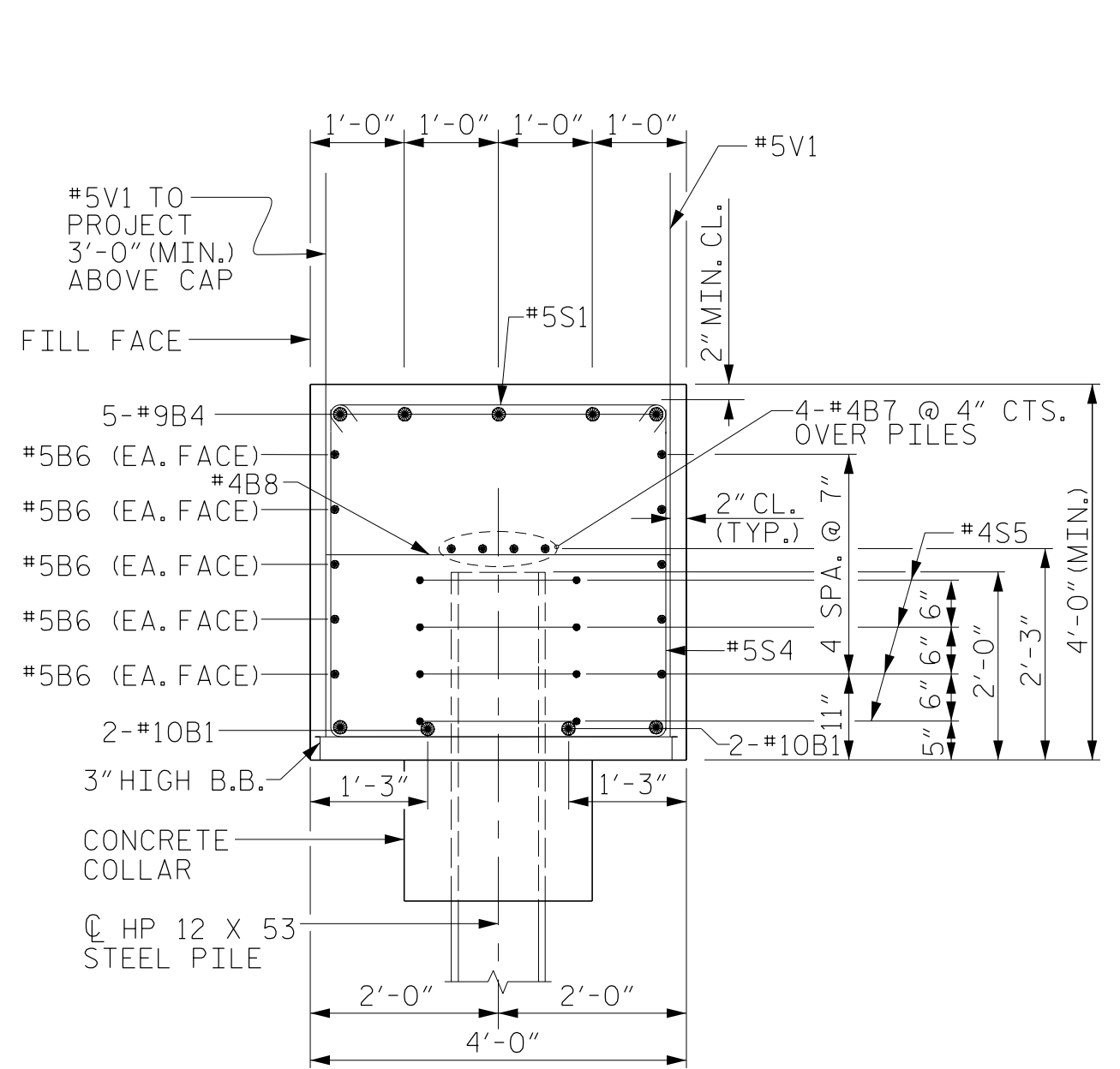
TEMPORARY DRAINAGE AT END BENT



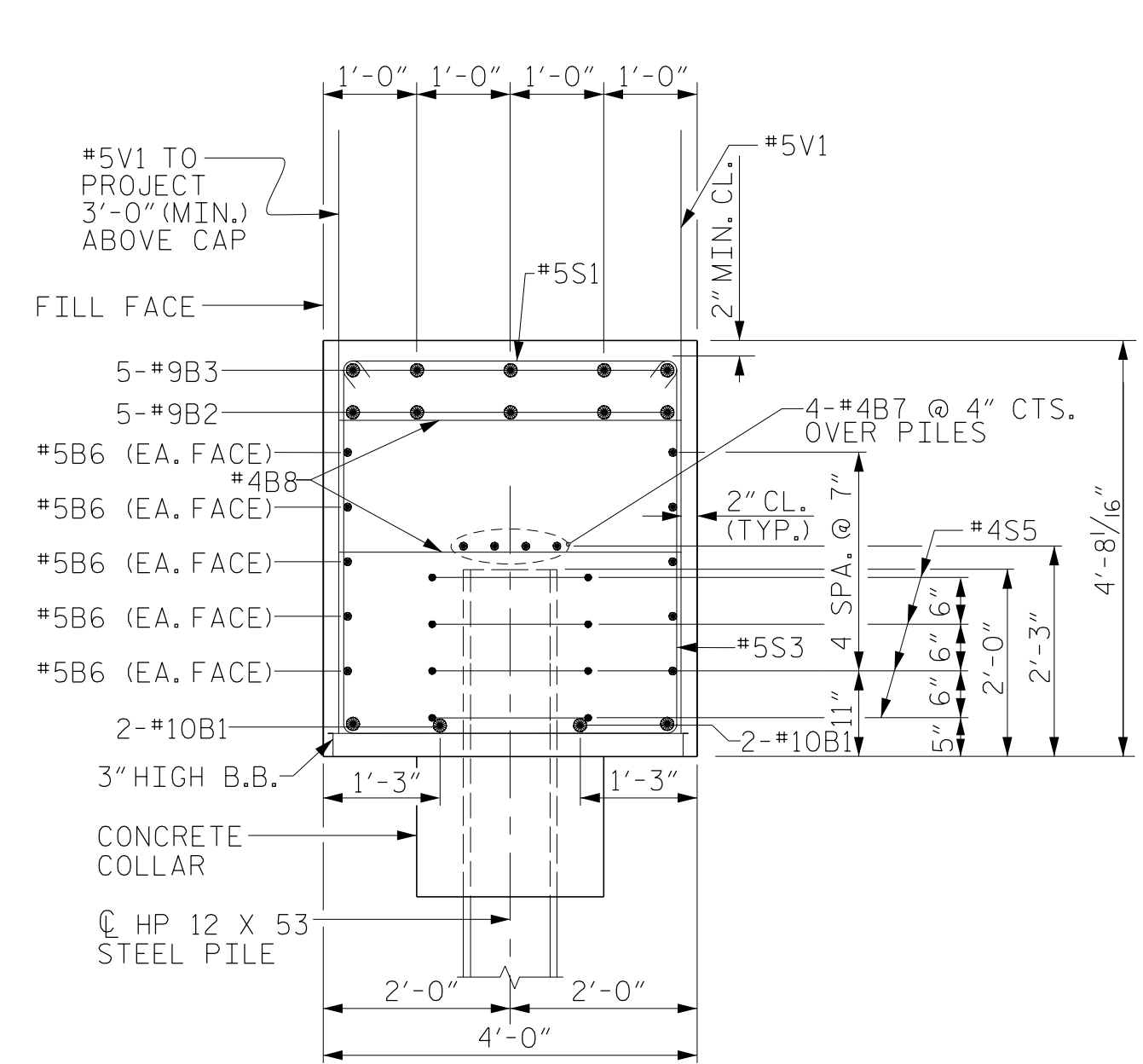
PILE SPLICE DETAILS



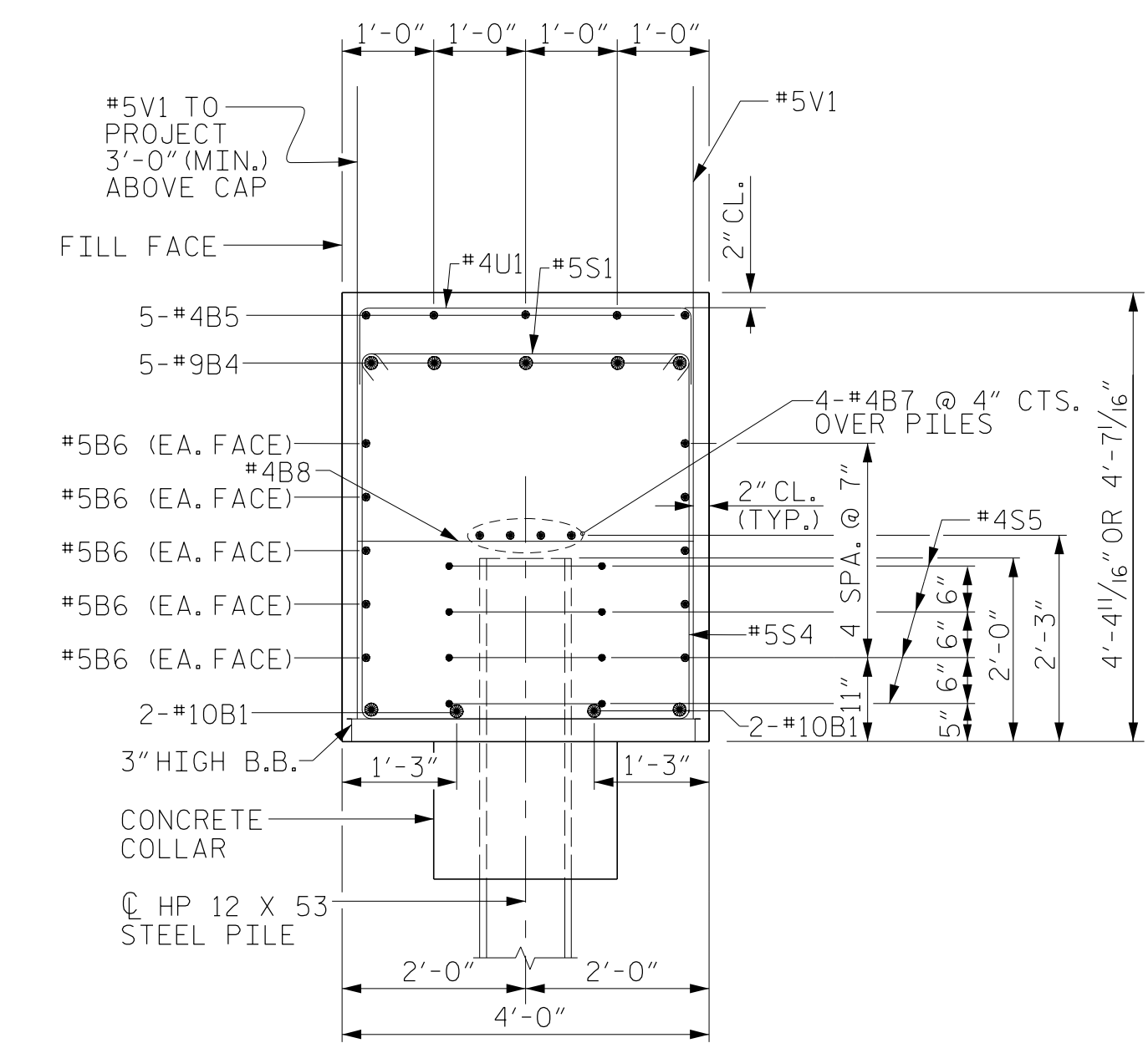
BILL OF MATERIAL FOR END BENT No. 1					
BAR	NO.	SIZE	TYPE	LENGTH	WEIGHT
B1	8	#10	1	49'-3"	1695
B2	5	#9	1	32'-10"	558
B3	5	#9	STR	21'-0"	357
B4	5	#9	1	54'-9"	931
B5	5	#4	STR	21'-3"	71
B6	20	#5	STR	45'-5"	947
B7	16	#4	STR	23'-9"	254
B8	28	#4	STR	3'-8"	69
H1	18	#6	STR	18'-8"	505
H2	16	#6	STR	18'-7"	447
S1	112	#5	2	4'-7"	535
S2	28	#5	3	12'-3"	358
S3	27	#5	3	13'-2"	371
S4	57	#5	3	11'-10"	704
S5	40	#4	4	6'-6"	174
U1	15	#4	5	7'-2"	72
V1	206	#5	STR	7'-8"	1647
REINFORCING STEEL FOR END BENT No. 1					9695 LBS.
CLASS A CONCRETE BREAKDOWN CAP, LOWER PART OF WINGS & COLLARS					63.9 C.Y.
HP 12 X 53 STEEL PILES					LN. FT. = 910



SECTION Z-Z



SECTION Y-Y



SECTION X-X

PROJECT NO. R-2707C

CLEVELAND COUNTY

STATION: 24+07.99 -Y9- POT

SHEET 3 OF 3



DocuSigned by:
Jeff Loftus
FES1DC2E97940 2/2/2017

Firm License No. C-1051
421 Fayetteville St,
Suite 400
Raleigh, NC 27601
T 919.380.8750
www.stewartinc.com

STATE OF NORTH CAROLINA DEPARTMENT OF TRANSPORTATION RALEIGH					
SUBSTRUCTURE INTEGRAL END BENT No. 1 DETAILS					
REVISIONS					SHEET NO.
NO.	BY:	DATE:	NO.	BY:	DATE:
1			3		
2			4		
					TOTAL SHEETS 37

STR. #6

DRAWN BY: J. LOFTUS DATE: 09-16

CHECKED BY: H. ASSFOURA DATE: 11-16

DESIGN ENGINEER OF RECORD: J. LOFTUS DATE: 09-16

R 2707C-6

2/2/2017

\\406_055_r2707c-smu-1EB3-s6-28.dgn

USER:deFault