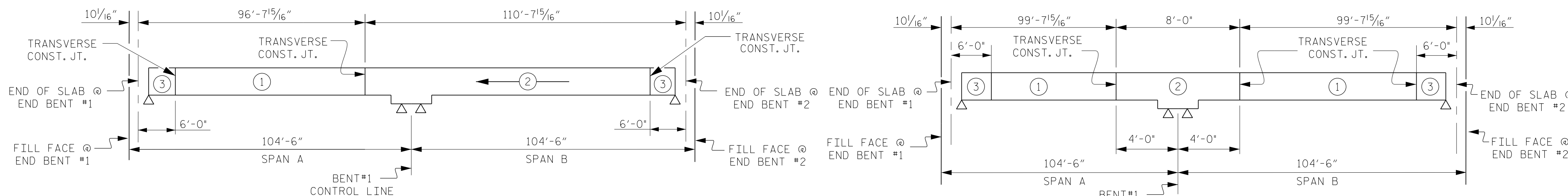


LAYOUT FOR COMPUTING AREA
REINFORCED CONCRETE DECK SLAB
(SQ. FT. = 16,915)

GROOVING BRIDGE FLOORS	
BRIDGE DECK	13,476 SQ.FT.
APPROACH SLABS	3,250 SQ.FT.
TOTAL	16,726 SQ.FT.

BAR SIZE	SUPERSTRUCTURE REINFORCING STEEL LENGTHS ARE BASED ON THE FOLLOWING MINIMUM SPLICE LENGTHS				
	SUPERSTRUCTURE EXCEPT APPROACH SLABS, PARAPET, AND BARRIER RAIL		APPROACH SLABS		PARAPET AND BARRIER RAIL
	EPOXY COATED	UNCOATED	EPOXY COATED	UNCOATED	
#4	2'-0"	1'-9"	2'-0"	1'-9"	2'-9"
#5	2'-6"	2'-2"	2'-6"	2'-2"	3'-5"
#6	3'-0"	2'-7"	3'-10"	2'-7"	4'-4"
#7	5'-3"	3'-6"			
#8	6'-10"	4'-7"			



POURING SEQUENCE
(CONTINUOUS FOR LIVE LOAD)

KEY
⊕ = INDICATES POUR NUMBER AND DIRECTION OF POUR

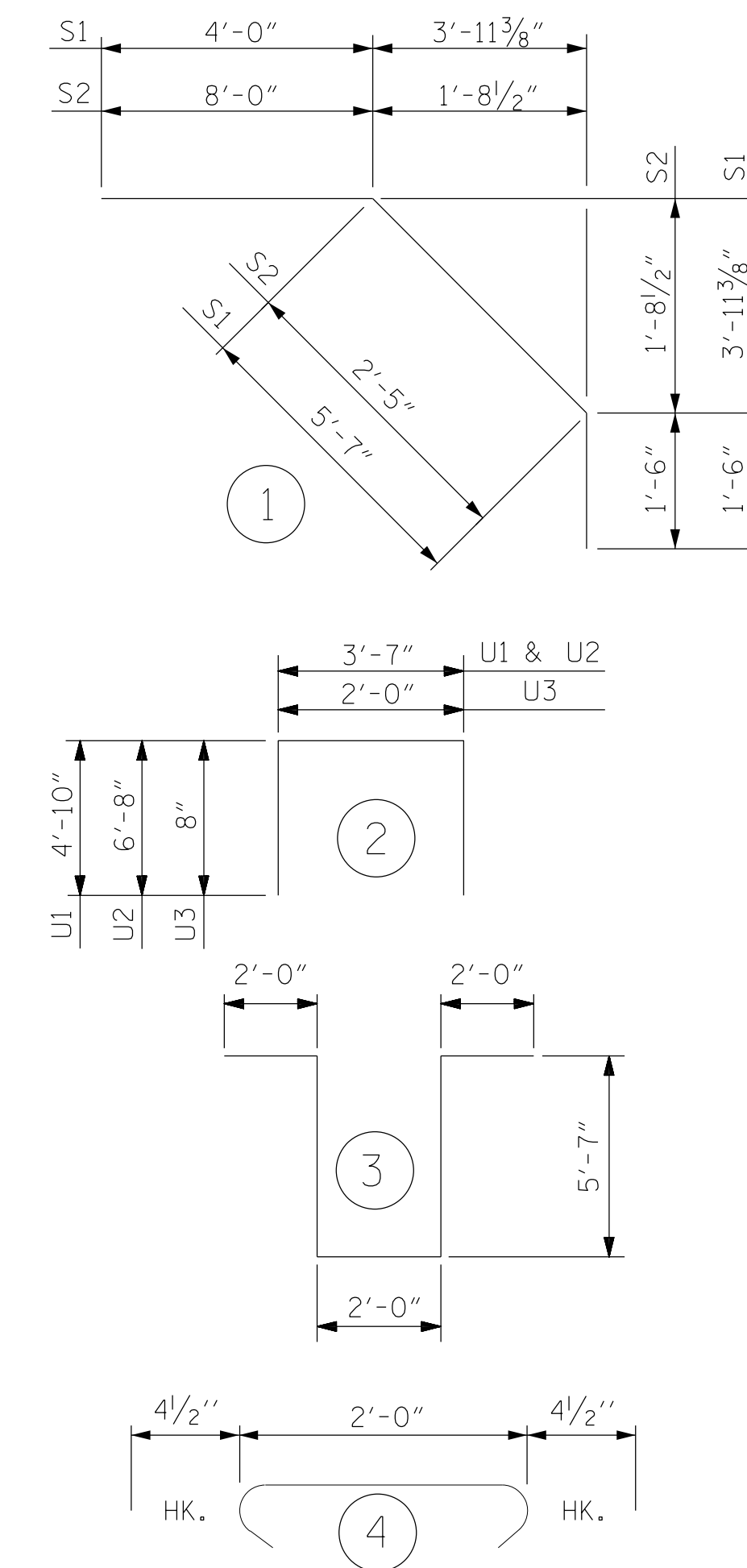
OPTIONAL POURING SEQUENCE
(CONTINUOUS FOR LIVE LOAD)

KEY
⊕ = INDICATES POUR NUMBER

BILL OF MATERIAL

BAR	NO.	SIZE	TYPE	LENGTH	WEIGHT	BAR	NO.	SIZE	TYPE	LENGTH	WEIGHT
* A1	734	#5	STR	41'-11"	32,090	* G1	418	#4	STR	5'-0"	1,396
* A2	4	#5	STR	39'-8"	165	* G2	139	#4	STR	2'-8"	248
* A3	4	#5	STR	37'-1"	155						
* A4	4	#5	STR	34'-6"	144	H1	26	#6	STR	18'-8"	729
* A5	4	#5	STR	32'-0"	133	H2	2	#6	STR	7'-0"	21
* A6	2	#5	STR	56'-3"	117	H3	26	#6	STR	18'-7"	726
* A7	2	#5	STR	51'-2"	107	H4	2	#6	STR	7'-0"	21
* A8	2	#5	STR	46'-0"	96	H5	28	#6	STR	19'-1"	803
* A9	2	#5	STR	40'-11"	85	H6	28	#6	STR	18'-8"	785
* A10	2	#5	STR	35'-10"	75						
* A11	2	#5	STR	30'-8"	64	K1	48	#4	STR	23'-6"	754
* A12	2	#5	STR	25'-7"	53	K2	56	#4	STR	9'-9"	365
* A13	2	#5	STR	20'-5"	43	K3	14	#4	STR	8'-2"	76
* A14	2	#5	STR	15'-4"	32	K4	14	#4	STR	6'-9"	63
* A15	2	#5	STR	10'-3"	21	K5	16	#4	STR	5'-10"	62
* A16	2	#5	STR	5'-1"	11	K6	4	#4	STR	5'-0"	13
						K7	4	#4	STR	4'-4"	12
A17	734	#5	STR	41'-9"	31,962	K11	18	#4	STR	26'-3"	316
A18	4	#5	STR	39'-6"	165	K12	56	#4	STR	9'-9"	365
A19	4	#5	STR	36'-11"	154	K13	14	#4	STR	8'-2"	76
A20	4	#5	STR	34'-4"	143	K14	14	#4	STR	6'-9"	63
A21	4	#5	STR	31'-10"	133						
A22	2	#5	STR	56'-3"	117	* S1	124	#4	1	11'-1"	918
A23	2	#5	STR	51'-2"	107	* S2	124	#4	1	11'-11"	987
A24	2	#5	STR	46'-0"	96	S3	56	#4	3	17'-2"	642
A25	2	#5	STR	40'-11"	85	S4	280	#4	4	2'-9"	514
A26	2	#5	STR	35'-10"	75						
A27	2	#5	STR	30'-8"	64	U1	124	#4	2	13'-3"	1,098
A28	2	#5	STR	25'-7"	53	U2	12	#4	2	16'-11"	136
A29	2	#5	STR	20'-5"	43	* U3	120	#4	2	3'-4"	267
A30	2	#5	STR	15'-4"	32						
A31	2	#5	STR	10'-3"	21	V2	142	#5	STR	6'-7"	975
A32	2	#5	STR	5'-1"	11						
* B1	440	#4	STR	27'-7"	8,107						
B2	304	#5	STR	53'-3"	16,884						
* B3	108	#6	STR	32'-0"	5,191						
* B4	216	#6	STR	21'-0"	6,813						
* B5	80	#4	STR	27'-7"	1,474						
* B6	24	#4	STR	27'-7"	442						

BAR TYPES



ALL BAR DIMENSIONS ARE OUT TO OUT

SUPERSTRUCTURE BILL OF MATERIAL

	CLASS AA CONCRETE (CU. YDS.)	REINFORCING STEEL (LBS.)	EPOXY COATED REINFORCING STEEL (LBS.)
POUR 1	219.8		
POUR 2	253.8	57,860	56,307
POUR 3*	216.6		
SIDEWALK	50.2		3,137
CONC. ISLAND	11.4		690
TOTALS**	751.8	57,860	60,134

* INCLUDES UPPER PART OF END BENT CAP & WINGS

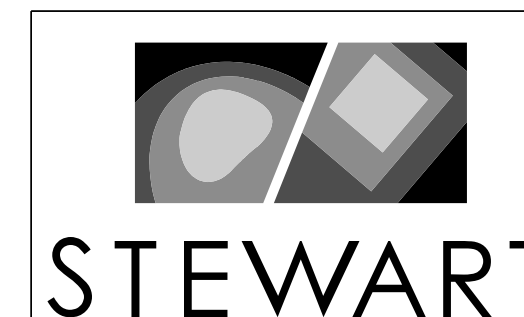
** QUANTITIES FOR PARAPET AND END POSTS ARE NOT INCLUDED

PROJECT NO. R-2707C
CLEVELAND COUNTY
STATION: 24+07.99 -Y9- POT



DocuSigned by:
Jeff Loftus
FES1DC2E979440 2/2/2017

Firm License No. C-1051
421 Fayetteville St,
Suite 400
Raleigh, NC 27601
T 919.380.8750
www.stewartinc.com



SUPERSTRUCTURE
BILL OF MATERIAL

REVISIONS						SHEET NO.
NO.	BY:	DATE:	NO.	BY:	DATE:	
1			3			TOTAL SHEETS
2			4			37

STR. #6

DRAWN BY: J. LOFTUS DATE: 07-16
CHECKED BY: H. ASSFOURA DATE: 11-16
DESIGN ENGINEER OF RECORD: J. LOFTUS DATE: 07-16

R 2707C-6
2/2/2017
\\406_049_R2707C_SMU_BOML_S6-25.dgn
USER:deFault